



SZABO SCANDIC

Part of Europa Biosite

Produktinformation



Forschungsprodukte & Biochemikalien



Zellkultur & Verbrauchsmaterial



Diagnostik & molekulare Diagnostik



Laborgeräte & Service

Weitere Information auf den folgenden Seiten!
See the following pages for more information!



Lieferung & Zahlungsart

siehe unsere [Liefer- und Versandbedingungen](#)

Zuschläge

- Mindermengenzuschlag
- Trockeneiszuschlag
- Gefahrgutzuschlag
- Expressversand

SZABO-SCANDIC HandelsgmbH

Quellenstraße 110, A-1100 Wien

T. +43(0)1 489 3961-0

F. +43(0)1 489 3961-7

mail@szabo-scandic.com

www.szabo-scandic.com

[linkedin.com/company/szaboscandic](https://www.linkedin.com/company/szaboscandic) 

Datasheet for K711**NFkB Antibody Sampler Kit****Overview**

Description:	NFkB Antibody Sampler Kit - K711
Item No.:	K711
Size:	1 Kit
Applications:	WB

Product Details

Background:	<p>NFkB was originally identified as a factor that binds to the immunoglobulin kappa light chain enhancer in B cells. It was subsequently found in non-B cells in an inactive cytoplasmic form consisting of NFkB bound to IkB. NFkB was originally identified as a heterodimeric DNA binding protein complex consisting of p65 (RelA) and p50 (NFkB1) subunits. Other identified subunits include p52 (NFkB2), c-Rel, and RelB. The p65, cRel, and RelB subunits are responsible for transactivation. The p50 and p52 subunits possess DNA binding activity but limited ability to transactivate. p52 has been reported to form transcriptionally active heterodimers with the NFkB subunit p65, similar to p50/p65 heterodimers. The heterodimers of p52/p65 and p50/p65 are regulated by physical inactivation in the cytoplasm by IkB-a. IkB-a binds to the p65 subunit, preventing nuclear localization and DNA binding. Low levels of p52 and p50 homodimers can also exist in cells.</p> <p>IKB-alpha inhibits the activity of dimeric NF-kappa-B/REL complexes by trapping REL dimers in the cytoplasm through masking of their nuclear localization signals. On cellular stimulation by immune and proinflammatory responses, IKBA becomes phosphorylated promoting ubiquitination and degradation, enabling the dimeric RELA to translocate to the nucleus and activate transcription.</p> <p>Anti-NFkB and Anti-IKBA Antibodies are ideal for investigators involved in Cell Signaling, Neuroscience, Signal Transduction and Immunology research.</p>
Synonyms:	Anti-NFkB p50, Anti-NFkB p65, Rabbit Anti-NFkB cRel, Anti-IKBAalpha, Control peptides, antibody sample kits

Application Details

Tested Applications:	WB
-----------------------------	----

Application Note:	Each kit contains one unit of the following products: Anti-NFκB p50 (NFκB1) (RABBIT) Antibody (100 μL) Anti-NFκB p65 (Rel A) (RABBIT) Antibody (100 μL) Anti-NFκB cRel (RABBIT) Antibody (100 μL) Anti-IκBα C-terminal (RABBIT) Antibody (100 μL) Anti-RABBIT IgG (H&L) (GOAT) Peroxidase Conjugated Antibody (100 μg) CONTROL PEPTIDE for Anti-NFκB p50 (NFκB1) (RABBIT) Antibody (50 μg) CONTROL PEPTIDE for Anti-NFκB p65 (Rel A) (RABBIT) Antibody (50 μg) CONTROL PEPTIDE for Anti-NFκB cRel (RABBIT) Antibody (50 μg) CONTROL PEPTIDE for Anti-IκBα C-terminal (RABBIT) Antibody (50 μg)
--------------------------	---

Assay Dilutions:	All assays should be optimized by the user. Recommended dilutions (if any) may be listed below.
ELISA:	1:5,000 - 1:25,000
WB:	1:500 - 1:2,000

Formulation

Physical State:	Liquid (sterile filtered)
------------------------	---------------------------

Shipping & Handling

Shipping Condition:	Dry Ice
Storage Condition:	Store vial at -20° C prior to opening. Aliquot contents and freeze at -20° C or below for extended storage. Avoid cycles of freezing and thawing. Centrifuge product if not completely clear after standing at room temperature. This product is stable for several weeks at 4° C as an undiluted liquid. Dilute only prior to immediate use.
Expiration:	Expiration date is one (1) year from date of receipt.

Images



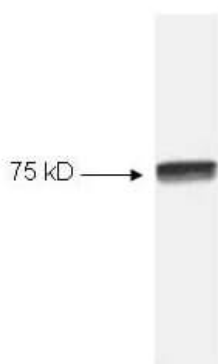
Western Blot

Western blot of HeLa cell extract. A predominant band ~65 kDa (arrowhead) corresponding to NFkB p65 Rel A is observed with anti NFkB antibody 100-4165. All incubations except color development were performed using TBS supplemented with 0.1% Tween-20 at room temperature. The membrane was blocked in 5% dry milk for 2 h. After washing, a 1:5,000 dilution of the primary antibody was added to the membrane and incubated for 2 h. Washes with buffer were performed 4 times for 5' each. The western blot was incubated with secondary antibody (HRP Goat-a-Rabbit IgG [H&L]) diluted 1:2,000 for 1 h. Washes with TBS preceded color development.



Kit Box

This product is assembled as a kit. See attached protocol or CofA for further details.



Western Blot

Western blot of HeLa cell extract using p/n 100-4166 Anti-NFkB cRel (RABBIT) Antibody (100 µL). All incubations except color development were performed using TBS supplemented with 0.1% Tween-20 at room temperature. The membrane was blocked in 5% dry milk for 2 h. After washing, a 1:1,000 dilution of the primary antibody was added to the membrane and incubated for 2 h. Washes with buffer were performed 4 times for 5' each. The western blot was incubated with secondary antibody (HRP Goat-a-Rabbit IgG [H&L]) diluted 1:2,000 for 1 h. Washes with TBS preceded color development.

**Western Blot**

Western blot of HeLa cell extract using Anti-NFkB p50 (NFkB1) Antibody 100-4164. All incubations except color development were performed using TBS supplemented with 0.1% Tween-20 at room temperature. The membrane was blocked in 5% dry milk for 2 h. After washing, a 1:1,000 dilution of the primary antibody was added to the membrane and incubated for 2 h. Washes with buffer were performed 4 times for 5' each. The western blot was incubated with secondary antibody (HRP Goat-a-Rabbit IgG [H&L]) diluted 1:2,000 for 1 h. Washes with TBS preceded color development.

Disclaimer

This product is for research use only and is not intended for therapeutic or diagnostic applications. Please contact a technical service representative for more information. All products of animal origin manufactured by Rockland Immunochemicals are derived from starting materials of North American origin. Collection was performed in United States Department of Agriculture (USDA) inspected facilities and all materials have been inspected and certified to be free of disease and suitable for exportation. All properties listed are typical characteristics and are not specifications. All suggestions and data are offered in good faith but without guarantee as conditions and methods of use of our products are beyond our control. All claims must be made within 30 days following the date of delivery. The prospective user must determine the suitability of our materials before adopting them on a commercial scale. Suggested uses of our products are not recommendations to use our products in violation of any patent or as a license under any patent of Rockland Immunochemicals, Inc. If you require a commercial license to use this material and do not have one, then return this material, unopened to: Rockland Inc., P.O. BOX 5199, Limerick, Pennsylvania, USA.