



SZABO SCANDIC

Part of Europa Biosite

Produktinformation



Forschungsprodukte & Biochemikalien



Zellkultur & Verbrauchsmaterial



Diagnostik & molekulare Diagnostik



Laborgeräte & Service

Weitere Information auf den folgenden Seiten!
See the following pages for more information!



Lieferung & Zahlungsart

siehe unsere [Liefer- und Versandbedingungen](#)

Zuschläge

- Mindermengenzuschlag
- Trockeneiszuschlag
- Gefahrgutzuschlag
- Expressversand

SZABO-SCANDIC HandelsgmbH

Quellenstraße 110, A-1100 Wien

T. +43(0)1 489 3961-0

F. +43(0)1 489 3961-7

mail@szabo-scandic.com

www.szabo-scandic.com

[linkedin.com/company/szaboscandic](https://www.linkedin.com/company/szaboscandic)



Datasheet for KAS-001**Loading Control Antibody Sampler Kit****Overview**

Description:	Loading Control Antibody Sampler Kit - KAS-001
Item No.:	KAS-001
Size:	1 Kit
Applications:	WB

Product Details

Background:	The Loading Control Antibody Sampler Kit contains antibodies to a variety of housekeeping proteins. Loading controls are essential for the interpretation of western blot data. Loading control antibodies allow the verification of equal protein loading between samples. Ideal loading controls are expressed constitutively and at high levels with low variability between cell lines and experimental conditions. Also, the loading control should be at a different molecular weight than the protein of interest this allows the bands to be visually distinguishable. The Loading Control Antibody Sampler kit contains enough primary and secondary antibodies to perform ten western blots per loading control antibody.
Synonyms:	Loading Control Antibody Sampler Kit, Rabbit Anti-VDAC/Porin Antibody, Rabbit Anti-GAPDH Antibody, Rabbit Anti-alpha-Tubulin Antibody, Rabbit Anti-HDAC-1 Antibody, Rabbit Anti-beta-Actin Antibody

Target Details

Immunogen:	VDAC, GAPDH, alpha-Tubulin, HDAC-1, beta-Actin
Purity/Specificity:	All loading control antibodies included in this kit - VDAC/Porin Antibody, GAPDH Antibody, alpha-Tubulin Antibody, HDAC-1 Antibody and beta-Actin Antibody are affinity purified against their respective targets.

Application Details

Tested Applications:	WB
-----------------------------	----

Application Note:	Each kit contains one unit of the following products: Anti-VDAC/Porin (RABBIT) Antibody (25 µL) Anti-Glyceraldehyde-3-Phosphate Dehydrogenase (GAPDH) (RABBIT) Antibody (25 µL) Anti-alpha-Tubulin (RABBIT) Antibody (25 µL) Anti-HDAC-1 (RABBIT) Antibody (25 µL) Anti-beta Actin (RABBIT) Antibody (25 µL) Anti-RABBIT IgG (H&L) (GOAT) Antibody Peroxidase Conjugated (2 mg)
--------------------------	---

Assay Dilutions:	All assays should be optimized by the user. Recommended dilutions (if any) may be listed below.
ELISA:	1:5,000 - 1:25,000
WB:	1:500 - 1:5,000

Formulation

Physical State:	Liquid (sterile filtered)
Concentration:	n/a
Buffer:	0.02 M Potassium Phosphate, 0.15 M Sodium Chloride, pH 7.2

Shipping & Handling

Shipping Condition:	Dry Ice
Storage Condition:	Store vials at -20° C or below prior to opening. The primary antibodies contain a relatively low volume of reagent (25 µL). To minimize loss of volume dilute 1:10 by adding 225 µL of the buffer stated above directly to the vial. Recap, mix thoroughly and briefly centrifuge to collect the volume at the bottom of the vial. Use this intermediate dilution when calculating final dilutions as recommended below. Store the vial at -20°C or below after dilution. Avoid cycles of freezing and thawing.
Expiration:	Expiration date is one (1) year from date of receipt.

Images



Kit Box

This product is assembled as a kit. See attached protocol or CofA for further details.



Western Blot

Western Blot of Rabbit Anti-HDAC-1 Antibody. Lane 1: 293 whole cell lysate. Lane 2: none. Load: 35 μ g per lane. Primary antibody: HDAC-1 antibody at 1:3,500 for overnight at 4°C. Secondary antibody: IRDye800™ rabbit secondary antibody at 1:10,000 for 45 min at RT. Block: 5% BLOTTO overnight at 4°C. Predicted/Observed size: ~65 kDa corresponding to human HDAC1. Other band(s): none.



Western Blot

Western Blot of Rabbit Anti-HDAC-1 Antibody. Lane 1: LNCaP prostate cancer cells. Lane 2: none. Load: 50 μ g per lane. Primary antibody: HDAC-1 antibody at 1:1000 for overnight at 4°C. Secondary antibody: IRDye800™ rabbit secondary antibody at 1:10,000 for 45 min at RT. Block: 5% BLOTTO overnight at 4°C. Predicted/Observed size: 55kDa for HDAC-1. Other band(s): none.



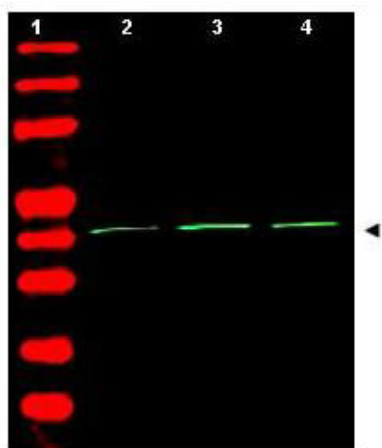
Western Blot

Western Blot of Rabbit Anti-Alpha Tubulin Antibody. Lane 1: whole cell lysates from mouse brain. Lane 2: rat brain. Lane 3: A431 cells. Lane 4: Jurkat cells. Lane 5: HeLa cells. Load: 35 μ g per lane. Primary antibody: Alpha Tubulin antibody at 1:1,200 for overnight at 4°C. Secondary antibody: IRDye800™ rabbit secondary antibody at 1:10,000 for 45 min at RT. Block: 5% BLOTTO overnight at 4°C. Predicted/Observed size: ~50 kDa corresponding to alpha tubulin (arrowhead). Other band(s): none.



Western Blot

Western Blot of Rabbit Anti-VDAC/Porin Antibody. Lane 1: rat heart whole cell lysate. Lane 2: none. Load: 35 μ g per lane. Primary antibody: VDAC/Porin antibody at 1:1,200 for overnight at 4°C. Secondary antibody: IRDye800™ rabbit secondary antibody at 1:10,000 for 45 min at RT. Block: 5% BLOTTO overnight at 4°C. Predicted/Observed size: ~32 kDa corresponding to VDAC/Porin (arrowhead). Other band(s): none.



Western Blot

Western Blot of Rabbit Anti-Beta Actin Antibody. Lane 1: molecular weight. Lane 2: human embryonic kidney 293. Lane 3: human lung carcinoma A549. Lane 4: mouse brain. Load: 35 μ g per lane. Primary antibody: Beta Actin antibody at 1:1,500 for overnight at 4°C. Secondary antibody: IRDye800™ rabbit secondary antibody at 1:10,000 for 45 min at RT. Block: 5% BLOTTO overnight at 4°C. Predicted/Observed size: ~42 kDa corresponding to beta Actin (arrowhead). Other band(s): none.

Disclaimer

This product is for research use only and is not intended for therapeutic or diagnostic applications. Please contact a technical service representative for more information. All products of animal origin manufactured by Rockland Immunochemicals are derived from starting materials of North American origin. Collection was performed in United States Department of Agriculture (USDA) inspected facilities and all materials have been inspected and certified to be free of disease and suitable for exportation. All properties listed are typical characteristics and are not specifications. All suggestions and data are offered in good faith but without guarantee as conditions and methods of use of our products are beyond our control. All claims must be made within 30 days following the date of delivery. The prospective user must determine the suitability of our materials before adopting them on a commercial scale. Suggested uses of our products are not recommendations to use our products in violation of any patent or as a license under any patent of Rockland Immunochemicals, Inc. If you require a commercial license to use this material and do not have one, then return this material, unopened to: Rockland Inc., P.O. BOX 5199, Limerick, Pennsylvania, USA.