



SZABO SCANDIC

Part of Europa Biosite

Produktinformation



Forschungsprodukte & Biochemikalien



Zellkultur & Verbrauchsmaterial



Diagnostik & molekulare Diagnostik



Laborgeräte & Service

Weitere Information auf den folgenden Seiten!
See the following pages for more information!



Lieferung & Zahlungsart

siehe unsere [Liefer- und Versandbedingungen](#)

Zuschläge

- Mindermengenzuschlag
- Trockeneiszuschlag
- Gefahrgutzuschlag
- Expressversand

SZABO-SCANDIC HandelsgmbH

Quellenstraße 110, A-1100 Wien

T. +43(0)1 489 3961-0

F. +43(0)1 489 3961-7

mail@szabo-scandic.com

www.szabo-scandic.com

[linkedin.com/company/szaboscandic](https://www.linkedin.com/company/szaboscandic) 

Datasheet for MB-201-2000**Protein Molecular Weight Marker****Overview**

Description:	Protein Molecular Weight Marker (14 - 120kDa) (Packaged 10 x 200 µL) - MB-201-2000
Item No.:	MB-201-2000
Size:	10 x 200 µL
Applications:	SDS-PAGE

Product Details

Background:	This protein molecular weight marker is a cocktail containing seven purified proteins that range in size from 14 to 120 kDa and thus span a molecular weight range common to most proteins and protein subunits. The protein mixture has been formulated to yield well-defined bands after SDS–polyacrylamide gel electrophoresis and staining with Coomassie blue or other common staining techniques.
Synonyms:	Protein ladder, Protein marker, Protein standard, Protein molecular weight standard, Molecular weight marker, Protein molecular weight ladder, Protein marker, Mw marker, Mw standard
Reagent Type:	MW Standards

Target Details

Purity/Specificity:	Protein Molecular Weight Marker is supplied in 1X loading buffer and is ready-to-use. It contains: [62.5 mM Tris-HCl, pH 6.8, 2% (w/v) SDS, 250 mM NaCl, 1mM EDTA, 4% (v/v) β-Mercaptoethanol, 35% (v/v) Glycerol and 0.05% (w/v) bromophenol blue.] This product are unstained markers optimized for use with Coomassie blue staining, but the loading volume can be adjusted for compatibility with other staining methods (i.e. silver staining). The intensity of the 67 kDa bovine albumin band has been increased to serve as a reference.
----------------------------	--

Application Details

Tested Applications:	SDS-PAGE
-----------------------------	----------

Application Note: Protein Molecular Weight Marker has been tested and is designed for use in accurate estimation of protein molecular weight in SDS-polyacrylamide gel electrophoresis and western blotting. Thaw the cocktail at room temperature. Gently invert vial several times to ensure that the solution is homogeneous and that any precipitated material is re-dissolved. A loading volume of 5-10µl is appropriate for most gel formats.

Assay Dilutions: All assays should be optimized by the user. Recommended dilutions (if any) may be listed below.

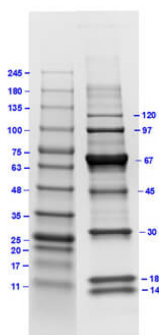
Formulation

Physical State:	Liquid (in 1x Loading Buffer)
Concentration:	1X
Buffer:	2.5 mM Tris-HCl, pH 6.8, 2% (w/v) SDS, 250 mM NaCl, 1mM EDTA, 4% (v/v) β-Mercaptoethanol, 35% (v/v) Glycerol and 0.05% (w/v) bromophenol blue
Preservative:	0.01% (w/v) Sodium Azide
Stabilizer:	None

Shipping & Handling

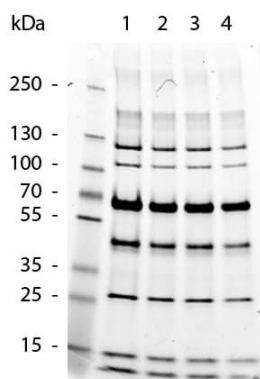
Shipping Condition:	Dry Ice
Storage Condition:	Store vial at -20° C.
Expiration:	Expiration date is six (6) months from date of receipt.

Images



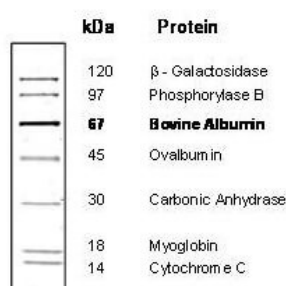
SDS-PAGE

SDS PAGE Results of Protein Molecular Weight Marker 14-120kDa. Lane 1: Opal Prestained Molecular Weight Marker (11-245kDa) (p/n MB-210-0500). [7µL] Lane 2: Protein Molecular Weight Marker (14-120kDa) (p/n MB-201-0200). [5µL] 4-20% Gel, Coomassie Stained.



SDS-PAGE

SDS-Page of Protein Molecular Weight Marker. Lane 1: Protein Molecular Weight Marker 12.5 uL. Lane 2: Protein Molecular Weight Marker 10.0 uL. Lane 3: Protein Molecular Weight Marker 7.5 uL. Lane 4: Protein Molecular Weight Marker 5.0 uL. Exact molecular weights are detailed on image 1.



SDS-PAGE

SDS PAGE of Protein Molecular Weight Marker, 14-120 kDa

4-20% Tris-Glycine SDS-PAGE
Stained with Coomassie Blue

Disclaimer

This product is for research use only and is not intended for therapeutic or diagnostic applications. Please contact a technical service representative for more information. All products of animal origin manufactured by Rockland Immunochemicals are derived from starting materials of North American origin. Collection was performed in United States Department of Agriculture (USDA) inspected facilities and all materials have been inspected and certified to be free of disease and suitable for exportation. All properties listed are typical characteristics and are not specifications. All suggestions and data are offered in good faith but without guarantee as conditions and methods of use of our products are beyond our control. All claims must be made within 30 days following the date of delivery. The prospective user must determine the suitability of our materials before adopting them on a commercial scale. Suggested uses of our products are not recommendations to use our products in violation of any patent or as a license under any patent of Rockland Immunochemicals, Inc. If you require a commercial license to use this material and do not have one, then return this material, unopened to: Rockland Inc., P.O. BOX 5199, Limerick, Pennsylvania, USA.