



SZABO SCANDIC

Part of Europa Biosite

Produktinformation



Forschungsprodukte & Biochemikalien



Zellkultur & Verbrauchsmaterial



Diagnostik & molekulare Diagnostik



Laborgeräte & Service

Weitere Information auf den folgenden Seiten!
See the following pages for more information!



Lieferung & Zahlungsart

siehe unsere [Liefer- und Versandbedingungen](#)

Zuschläge

- Mindermengenzuschlag
- Trockeneiszuschlag
- Gefahrgutzuschlag
- Expressversand

SZABO-SCANDIC Handels GmbH

Quellenstraße 110, A-1100 Wien

T. +43(0)1 489 3961-0

F. +43(0)1 489 3961-7

mail@szabo-scandic.com

www.szabo-scandic.com

[linkedin.com/company/szaboscandic](https://www.linkedin.com/company/szaboscandic) 

Datasheet for R403-0100**Rabbit Red Blood Cells 10% Washed Pooled Cells****Overview**

Description:	Rabbit Red Blood Cells (RBC) 10% Washed Pooled Cells - R403-0100
Item No.:	R403-0100
Size:	100 mL
Applications:	FC
Origin:	Rabbit

Product Details

Background:	Rabbit whole blood is washed to remove the platelet rich plasma, buffy coat layer, and leukocytes (WBC). Red blood cells are supplied as a 10 percent suspension in phosphate buffered saline (PBS). Rabbit red blood cells are useful for the titration of complement, adsorption procedures, testing for agglutinins/HA assays, and for the preparation of stroma as particulate reagents. Rabbit red blood cells are perishable and are collected and processed upon receipt of your order.
Synonyms:	Rabbit Washed Pooled Cells, Rabbit WPCs, Rabbit Red Blood Cells, Rabbit RBCs, erythrocytes
Species of Origin:	Rabbit

Target Details

Relevant Links:	<ul style="list-style-type: none">R403 SDS
------------------------	--

Application Details

Tested Applications:	FC
Application Note:	Complement titration, adsorption procedures, HA assays and for the preparation of stroma as particulate reagents.
Assay Dilutions:	All assays should be optimized by the user. Recommended dilutions (if any) may be listed below.

Tissue Data

Tissue Type:	Red Blood Cells
Sex:	Mixed
Strain:	Rabbit - New Zealand White

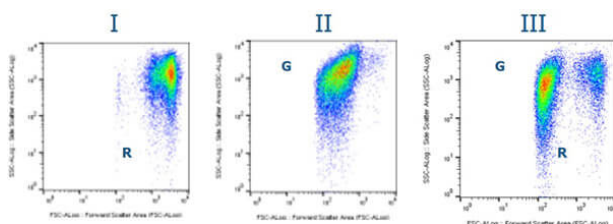
Formulation

Physical State:	Liquid
Buffer:	0.02 M Potassium Phosphate, 0.15 M Sodium Chloride, pH 7.2
Sterility:	Non-sterile
Preservative:	None
Stabilizer:	None

Shipping & Handling

Shipping Condition:	Wet Ice
Storage Condition:	Store rabbit washed pooled red blood cells at 4° C prior to opening. Be advised that blood is a perishable product and exact shelf may depend on application.
Expiration:	This product MAY be stable for up to two (2) weeks if properly stored and handled.

Images



Flow Cytometry

Flow cytometry analysis of unlabeled Rabbit RBCs and Rabbit Ghost RBCs. Light-scattering analysis (FSC vs SSC) of rabbit's red blood cells and their ghosts by flow cytometry result in detection of distinct populations. I) Rabbit (R) Red blood cells only, II) Rabbit Ghost (G) red blood cells only, and III) Mixture of R and G.

Disclaimer

This product is for research use only and is not intended for therapeutic or diagnostic applications. Please contact a technical service representative for more information. All products of animal origin manufactured by Rockland Immunochemicals are derived from starting materials of North American origin. Collection was performed in United States Department of Agriculture (USDA) inspected facilities and all materials have been inspected and certified to be free of disease and suitable for exportation. All properties listed are typical characteristics and are not specifications. All suggestions and data are offered in good faith but without guarantee as conditions and methods of use of our products are beyond our control. All claims must be made within 30 days following the date of delivery. The prospective user must determine the suitability of our materials before adopting them on a commercial scale. Suggested uses of our products are not recommendations to use our products in violation of any patent or as a license under any patent of Rockland Immunochemicals, Inc. If you require a commercial license to use this material and do not have one, then return this material, unopened to: Rockland Inc., P.O. BOX 5199, Limerick, Pennsylvania, USA.