



SZABO SCANDIC

Part of Europa Biosite

Produktinformation



Forschungsprodukte & Biochemikalien



Zellkultur & Verbrauchsmaterial



Diagnostik & molekulare Diagnostik



Laborgeräte & Service

Weitere Information auf den folgenden Seiten!
See the following pages for more information!



Lieferung & Zahlungsart

siehe unsere [Liefer- und Versandbedingungen](#)

Zuschläge

- Mindermengenzuschlag
- Trockeneiszuschlag
- Gefahrgutzuschlag
- Expressversand

SZABO-SCANDIC HandelsgmbH

Quellenstraße 110, A-1100 Wien

T. +43(0)1 489 3961-0

F. +43(0)1 489 3961-7

mail@szabo-scandic.com

www.szabo-scandic.com

[linkedin.com/company/szaboscandic](https://www.linkedin.com/company/szaboscandic) 

Datasheet for R709-005**Ghost Red Blood Cells (Rabbit)****Overview**

Description:	Rabbit Ghost Red Blood Cells - R709-005
Item No.:	R709-005
Size:	5 mL
Applications:	FC
Origin:	Rabbit

Product Details

Background:	Rabbit whole blood is washed to remove the platelet rich plasma, buffy coat layer, and leukocytes (WBC). Washed pooled cells are further processed using robust methods unique to the host species, removing approximately 99% of hemoglobin from a pool of erythrocytes leaving the membrane intact. Ghost Red blood cells are perishable and are collected and processed upon receipt of your order.
Synonyms:	Rabbit Washed Pooled Cells, Rabbit Red Blood Cells, Rabbit RBCs, erythrocytes, Ghost RBCs, Ghost erythrocytes
Species of Origin:	Rabbit

Application Details

Tested Applications:	FC
Application Note:	Ghost red blood cells derived from normal erythrocytes are used as model system for the study of biological membranes and phospholipid metabolism as well as for preparation of drug delivery systems like nanoerythrocytes (NER).
Assay Dilutions:	All assays should be optimized by the user. Recommended dilutions (if any) may be listed below.
Other:	Removal of hemoglobin as determined by A415nm: 100%.

Tissue Data

Tissue Type:	Red Blood Cells
Sex:	Mixed
Strain:	Rabbit - New Zealand White

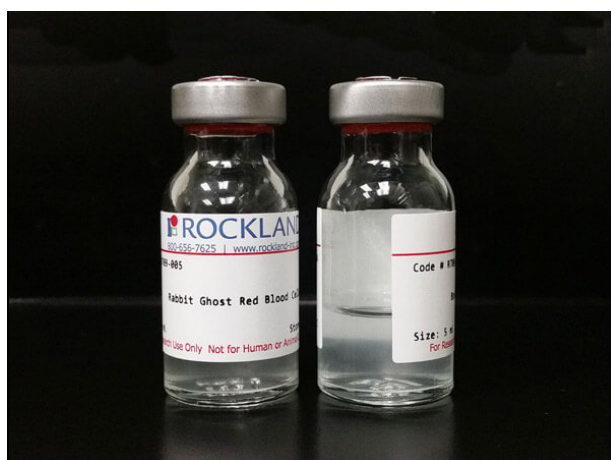
Formulation

Physical State:	Liquid
Concentration:	n/a
Buffer:	0.02 M Potassium Phosphate, 0.15 M Sodium Chloride, pH 7.2
Sterility:	Non-sterile
Preservative:	None
Stabilizer:	None

Shipping & Handling

Shipping Condition:	Wet Ice
Storage Condition:	Store at 4° C prior to opening. Be advised that blood products are perishable and exact shelf may depend on application. Do not freeze.
Expiration:	This product MAY be stable for up to two (2) weeks if properly stored and handled.

Images

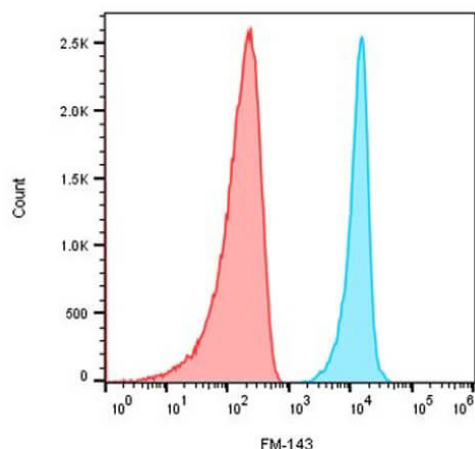
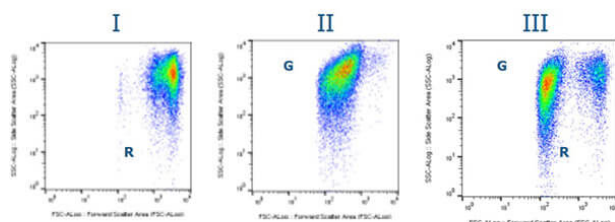


Bottle

Rabbit Ghost Red Blood Cells are perishable. They are collected and processed upon receipt of your order.

Flow Cytometry

Flow cytometry analysis of unlabeled Rabbit RBCs and Rabbit Ghost RBCs. Light-scattering analysis (FSC vs SSC) of rabbit's red blood cells and their ghosts by flow cytometry result in detection of distinct populations. I) Rabbit (R) Red blood cells only, II) Rabbit Ghost (G) red blood cells only, and III) Mixture of R and G.



Flow Cytometry

Labeling of ghost red blood cells. Flow cytometry histograms of rabbit's ghost red blood cells stained with FM® 1-43 dye. Red and blue histograms represent unstained and stained ghosts, respectively.

Disclaimer

This product is for research use only and is not intended for therapeutic or diagnostic applications. Please contact a technical service representative for more information. All products of animal origin manufactured by Rockland Immunochemicals are derived from starting materials of North American origin. Collection was performed in United States Department of Agriculture (USDA) inspected facilities and all materials have been inspected and certified to be free of disease and suitable for exportation. All properties listed are typical characteristics and are not specifications. All suggestions and data are offered in good faith but without guarantee as conditions and methods of use of our products are beyond our control. All claims must be made within 30 days following the date of delivery. The prospective user must determine the suitability of our materials before adopting them on a commercial scale. Suggested uses of our products are not recommendations to use our products in violation of any patent or as a license under any patent of Rockland Immunochemicals, Inc. If you require a commercial license to use this material and do not have one, then return this material, unopened to: Rockland Inc., P.O. BOX 5199, Limerick, Pennsylvania, USA.