



SZABO SCANDIC

Part of Europa Biosite

Produktinformation



Forschungsprodukte & Biochemikalien



Zellkultur & Verbrauchsmaterial



Diagnostik & molekulare Diagnostik



Laborgeräte & Service

Weitere Information auf den folgenden Seiten!
See the following pages for more information!



Lieferung & Zahlungsart

siehe unsere [Liefer- und Versandbedingungen](#)

Zuschläge

- Mindermengenzuschlag
- Trockeneiszuschlag
- Gefahrgutzuschlag
- Expressversand

SZABO-SCANDIC Handels GmbH

Quellenstraße 110, A-1100 Wien

T. +43(0)1 489 3961-0

F. +43(0)1 489 3961-7

mail@szabo-scandic.com

www.szabo-scandic.com

[linkedin.com/company/szaboscandic](https://www.linkedin.com/company/szaboscandic)



Datasheet for S000-09**Streptavidin Texas Red™ Conjugated****Overview**

Description:	Streptavidin Texas Red™ Conjugated - S000-09
Item No.:	S000-09
Size:	1 mg
Applications:	IF, Multiplex

Product Details

Background:	Streptavidin is isolated from bacteria, <i>Streptomyces avidinii</i> , and has an exceptionally high binding affinity for B7 (biotin). Rockland offers streptavidin in unconjugated and conjugated forms for common immunoassays including ELISA, western blotting, immunohistochemistry. Streptavidin is a tetrameric protein capable of binding 4 biotin groups to each molecule of streptavidin. While streptavidin has identical binding properties as avidin, it lacks the glycoprotein portion of the molecule and therefore shows less non-specific binding. Streptavidin is a slightly smaller molecule with a molecular weight of approximately 53.6 kDa. The sequence of avidin only shows 30% homology with streptavidin, and anti-avidin and anti-streptavidin antibodies are not immunologically cross reactive. Rockland Immunochemicals conjugates Texas Red™ to Affinity Purified antibodies, avidin, streptavidin and F(ab)2 Fragments of Affinity Purified Antibodies. The molar ratio of Texas Red to protein (F/P ratio) in the conjugate ranges from 2 - 3. Texas Red fluorochrome perform extremely well in double label experiments with fluorescein.
Synonyms:	SA, S avidin, streptococcus avidin, streptavidin Texas Red™ Conjugated
Conjugate:	Texas Red®
F/P Ratio:	2.0

Target Details

Purity/Specificity:	This product was prepared from chromatographically purified Streptavidin. Assay by immunoelectrophoresis resulted in a single precipitin arc against anti-Streptavidin.
----------------------------	---

Application Details

Suggested Applications:	IF, Multiplex (Based on references)
--------------------------------	-------------------------------------

Application Note:	This product is designed for immunofluorescence microscopy, fluorescence based plate assays (FLISA) and fluorescent western blotting. This product is also suitable for multiplex analysis, including multicolor imaging, utilizing various commercial platforms.
Assay Dilutions:	All assays should be optimized by the user. Recommended dilutions (if any) may be listed below.
FC:	1:500 - 1:2,500
FLISA:	1:10,000 - 1:50,000

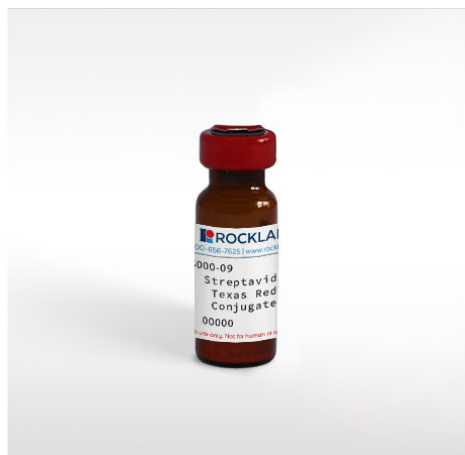
Formulation

Physical State:	Lyophilized
Concentration:	1.0 mg/mL by UV absorbance at 280 nm
Buffer:	0.02 M Potassium Phosphate, 0.15 M Sodium Chloride, pH 7.2
Preservative:	0.01% (w/v) Sodium Azide
Stabilizer:	10 mg/mL Bovine Serum Albumin (BSA) - Immunoglobulin and Protease free
Reconstitution Volume:	1.0 mL
Reconstitution Buffer:	Restore with deionized water (or equivalent)

Shipping & Handling

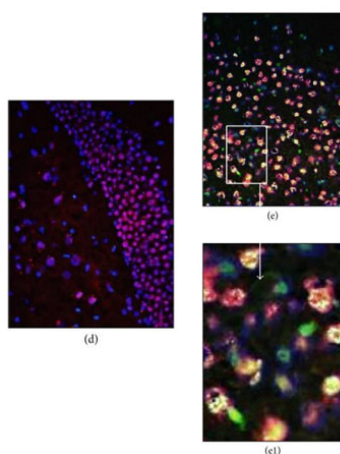
Shipping Condition:	Ambient
Storage Condition:	Store vial at 4° C prior to restoration. For extended storage aliquot contents and freeze at -20° C or below. Avoid cycles of freezing and thawing. Centrifuge product if not completely clear after standing at room temperature. This product is stable for several weeks at 4° C as an undiluted liquid. Dilute only prior to immediate use.
Expiration:	Expiration date is one (1) year from date of receipt.

Images



Bottle

Streptavidin Texas Red™ Conjugated



Immunofluorescence Microscopy

CNS-restricted expression of the CaMKII α -driven human CRP transgene and CRP production in the CNS of nCRPtg mice. (d-e) Frozen sections of wild type (d) and nCRPtg brains ((e); (e1) is a tenfold magnification of the indicated area) were incubated with a FITC-conjugated anti-human CRP antibody (green) and a Texas Red-conjugated anti-NeuN antibody (red). An orange-yellow color indicates colocalization of the FITC and Texas Red signals. DAPI (blue) was also used to stain cell nuclei. The dashed box in the cartoon shows the approximate position and orientation of the thin sections shown in (d)–(e). Streptavidin-Texas Red conjugate (p/n S000-09). Fig 2. PMID: 26421184.

References

- Wright, TT et al. Hepatic but Not CNS-Expressed Human C-Reactive Protein Inhibits Experimental Autoimmune Encephalomyelitis in Transgenic Mice. *Autoimmune Diseases* (2015)

Disclaimer

This product is for research use only and is not intended for therapeutic or diagnostic applications. Please contact a technical service representative for more information. All products of animal origin manufactured by Rockland Immunochemicals are derived from starting materials of North American origin. Collection was performed in United States Department of Agriculture (USDA) inspected facilities and all materials have been inspected and certified to be free of disease and suitable for exportation. All properties listed are typical characteristics and are not specifications. All suggestions and data are offered in good faith but without guarantee as conditions and methods of use of our products are beyond our control. All claims must be made within 30 days following the date of delivery. The prospective user must determine the suitability of our materials before adopting them on a commercial scale. Suggested uses of our products are not recommendations to use our products in violation of any patent or as a license under any patent of Rockland Immunochemicals, Inc. If you require a commercial license to use this material and do not have one, then return this material, unopened to: Rockland Inc., P.O. BOX 5199, Limerick, Pennsylvania, USA.