



SZABO SCANDIC

Part of Europa Biosite

Produktinformation



Forschungsprodukte & Biochemikalien



Zellkultur & Verbrauchsmaterial



Diagnostik & molekulare Diagnostik



Laborgeräte & Service

Weitere Information auf den folgenden Seiten!
See the following pages for more information!



Lieferung & Zahlungsart

siehe unsere [Liefer- und Versandbedingungen](#)

Zuschläge

- Mindermengenzuschlag
- Trockeneiszuschlag
- Gefahrgutzuschlag
- Expressversand

SZABO-SCANDIC HandelsgmbH

Quellenstraße 110, A-1100 Wien

T. +43(0)1 489 3961-0

F. +43(0)1 489 3961-7

mail@szabo-scandic.com

www.szabo-scandic.com

[linkedin.com/company/szaboscandic](https://www.linkedin.com/company/szaboscandic) 

Datasheet for W09-001-368**Raji Whole Cell Lysate****Overview**

Description:	Raji Whole Cell Lysate - W09-001-368
Item No.:	W09-001-368
Size:	500 µg
Applications:	SDS-PAGE, WB
Origin:	Human

Product Details

Background:	Ready-to-use whole cell lysates produced by Rockland Immunochemicals are derived from cell lines or tissues using highly refined extraction protocols to ensure exceptionally high quality, protein integrity and lot-to-lot reproducibility. All extracts are tested by SDS-PAGE using 4-20% gradient gels and immunoblot analysis using antibodies to key cell signaling components to confirm the presence of both high molecular weight and low molecular weight proteins.
Synonyms:	Raji Whole Cell Lysate, Raji WCL, Raji Lysate
Species of Origin:	Human

Target Details

Purity/Specificity:	The cells were grown in Dulbecco's medium supplemented with 10% fetal bovine serum. Cells were washed with PBS and then incubated on ice in modified RIPA buffer to lyse the cells. Protein integrity was ensured using a cocktail of protease inhibitors with broad specificity for the inhibition of aspartic, cysteine, and serine proteases as well as aminopeptidases (0.1 mM AEBSF HCl, 0.08 µM Aprotinin, 5 µM Bestatin, 1.5 µM E-64, 2 µM Leupeptin Hemisulfate, 1 µM Pepstatin A). Phosphatase inhibitors 1 mM NaF and 1 mM Na3VO4 were also added. Cell debris was removed by centrifugation. Protein concentration was determined by a modified Lowry assay using a commercially available kit. Protein concentration was adjusted to 2 mg/ml and then an equal volume of 2X SDS-PAGE sample buffer was added.
----------------------------	---

Application Details

Tested Applications:	SDS-PAGE, WB
-----------------------------	--------------

Application Note: W09-001-368 has been tested by dot blot and western blot. Ready-to-use lysates are especially prepared as positive controls for separation by SDS-PAGE and subsequent western blot analysis. Lysates are prepared in denaturing buffer WITHOUT dissociating agents (i.e. no 2-mercaptoethanol or dithiothreitol has been added). Heat lysate to 95° C for 5 minutes and rapidly cool. If dissociating conditions are desired, add reducing agent prior to heating. The recommended loading volume per lane is 10-20 µl depending on the size format of your gel.

Assay Dilutions: All assays should be optimized by the user. Recommended dilutions (if any) may be listed below.

WB: User Optimized

Cell Line Data

Cell Line: Raji - Human Lymphoblast

Lysate Fractionation: Whole Cell Lysate

Lysate Stimulation: Not Stimulated

Culture Type: Tissue Culture

Induction: None (Control)

Formulation

Physical State: Liquid

Concentration: 1.0 mg/mL by modified Lowry assay

Buffer: 1X SDS-PAGE Sample Buffer (62.5 mM Tris HCl, 2% SDS, 10% Glycerol and 0.005% bromophenol blue, pH 6.8)

Preservative: None

Stabilizer: 10% (v/v) Glycerol

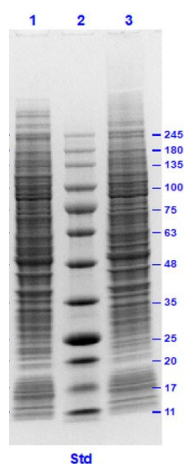
Shipping & Handling

Shipping Condition: Dry Ice

Storage Condition: Store vial at -70° C or COLDER. For extended storage, aliquot contents to minimize freeze/thaw cycles.

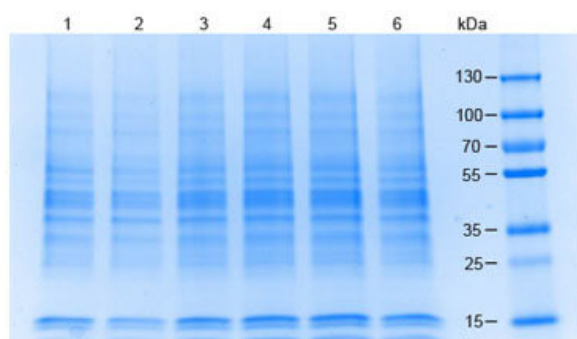
Expiration: Expiration date is three (3) months from date of receipt.

Images



SDS-PAGE

SDS PAGE Results of Raji Whole Cell Lysate. Lane 1: Raji Whole Cell Lysate Reduced [10µg]. Lane 2: Opal Prestained Molecular Weight Marker (p/n MB-210-0500). Lane 3: Raji Whole Cell Lysate Non-Reduced [10µg]. 4-20% Gel, Coomassie Stained.



SDS-PAGE

Coomassie stained SDS-PAGE of 20 µg of (1) HeLa WCL, (2) Jurkat WCL, (3) HEK 293 WCL, (4) MCF-7 WCL, (5) A 549 WCL, (6) Raji WCL separated using a 4-20% gradient gel under reducing conditions. Molecular weight standards are shown.

Disclaimer

This product is for research use only and is not intended for therapeutic or diagnostic applications. Please contact a technical service representative for more information. All products of animal origin manufactured by Rockland Immunochemicals are derived from starting materials of North American origin. Collection was performed in United States Department of Agriculture (USDA) inspected facilities and all materials have been inspected and certified to be free of disease and suitable for exportation. All properties listed are typical characteristics and are not specifications. All suggestions and data are offered in good faith but without guarantee as conditions and methods of use of our products are beyond our control. All claims must be made within 30 days following the date of delivery. The prospective user must determine the suitability of our materials before adopting them on a commercial scale. Suggested uses of our products are not recommendations to use our products in violation of any patent or as a license under any patent of Rockland Immunochemicals, Inc. If you require a commercial license to use this material and do not have one, then return this material, unopened to: Rockland Inc., P.O. BOX 5199, Limerick, Pennsylvania, USA.