



SZABO SCANDIC

Part of Europa Biosite

Produktinformation



Forschungsprodukte & Biochemikalien



Zellkultur & Verbrauchsmaterial



Diagnostik & molekulare Diagnostik



Laborgeräte & Service

Weitere Information auf den folgenden Seiten!
See the following pages for more information!



Lieferung & Zahlungsart

siehe unsere [Liefer- und Versandbedingungen](#)

Zuschläge

- Mindermengenzuschlag
- Trockeneiszuschlag
- Gefahrgutzuschlag
- Expressversand

SZABO-SCANDIC Handels GmbH

Quellenstraße 110, A-1100 Wien

T. +43(0)1 489 3961-0

F. +43(0)1 489 3961-7

mail@szabo-scandic.com

www.szabo-scandic.com

[linkedin.com/company/szaboscandic](https://www.linkedin.com/company/szaboscandic)



Datasheet for W09-001-A80**HeLa Whole Cell Lysate Etoposide Stimulated****Overview**

Description:	HeLa Whole Cell Lysate - Etoposide Stimulated - W09-001-A80
Item No.:	W09-001-A80
Size:	500 µg
Applications:	SDS-PAGE
Origin:	Human

Product Details

Background:	Ready-to-use whole cell lysates produced by Rockland Immunochemicals are derived from cell lines or tissues using highly refined extraction protocols to ensure exceptionally high quality, protein integrity and lot-to-lot reproducibility. All extracts are tested by SDS-PAGE using 4-20% gradient gels and immunoblot analysis using antibodies to key cell signaling components to confirm the presence of both high molecular weight and low molecular weight proteins.
Synonyms:	HeLa Whole Cell Lysate Etoposide Stimulated, HeLa Etoposide Stimulated Whole Cell Lysate, HeLa Etoposide Stimulated WCL, HeLa WCL Etoposide Stimulated
Species of Origin:	Human

Target Details

Purity/Specificity:	The cells were grown in DMEM supplemented with 10% FBS (Fetal Bovine Serum). Cells were treated with 10 µg/ml Etoposide for 3 h. Cells were washed in PBS and incubated on ice in modified RIPA buffer to lyse the cells. Protein integrity is ensured using a cocktail of protease inhibitors with broad specificity for the inhibition of aspartic, cysteine, and serine proteases as well as aminopeptidases (0.1 mM AEBSF HCl, 0.08 µM Aprotinin, 5 µM Bestatin, 1.5 µM E-64, 2 µM Leupeptin Hemisulfate and 1 µM Pepstatin A). Phosphatase inhibitors sodium fluoride, sodium orthovanadate, sodium pyrophosphate and D-threitol-glycerophosphate were also added. Cell debris was removed by centrifugation. Protein concentration was determined by Lowry assay using a commercially available kit. The protein concentration was adjusted to 2 mg/ml and then an equal volume of 2X SDS-PAGE sample buffer was added.
----------------------------	---

Application Details

Tested Applications:	SDS-PAGE
Application Note:	Ready-to-use lysates are especially prepared as positive controls for separation by SDS-PAGE and subsequent western blot analysis. Lysates are prepared in denaturing buffer WITHOUT dissociating agents (i.e. no 2-mercaptoethanol or dithiothreitol has been added). Heat lysate to 95° C for 5 minutes and rapidly cool. If dissociating conditions are desired, add reducing agent prior to heating. The recommended loading volume per lane is 10-20 µl depending on the size format of your gel.
Assay Dilutions:	All assays should be optimized by the user. Recommended dilutions (if any) may be listed below.
WB:	User Optimized

Cell Line Data

Cell Line:	HeLa - Human epidermoid carcinoma
Lysate Fractionation:	Whole Cell Lysate
Lysate Stimulation:	Etoposide
Culture Type:	Tissue Culture
Induction:	Etoposide (10 µg/ml)

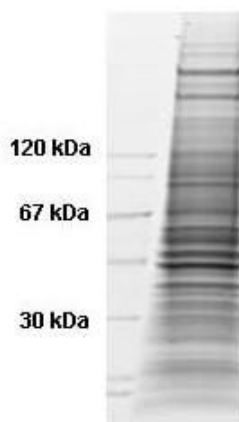
Formulation

Physical State:	Liquid (sterile filtered)
Concentration:	1.0 mg/mL by modified Lowry assay
Buffer:	1X SDS-PAGE Sample Buffer (62.5 mM Tris HCl, 2% SDS, 10% Glycerol and 0.005% bromophenol blue, pH 6.8)
Preservative:	None
Stabilizer:	10% (v/v) Glycerol

Shipping & Handling

Shipping Condition:	Dry Ice
Storage Condition:	Store vial at -70° C or COLDER. For extended storage, aliquot contents to minimize freeze/thaw cycles.
Expiration:	Expiration date is three (3) months from date of receipt.

Images



SDS-PAGE

Coomassie stained SDS-PAGE of 35 µg of Etoposide Stimulated HeLa Whole Cell Lysate (Ready-to-Use) resolved on a 4-20% gradient gel under reducing conditions.

Disclaimer

This product is for research use only and is not intended for therapeutic or diagnostic applications. Please contact a technical service representative for more information. All products of animal origin manufactured by Rockland Immunochemicals are derived from starting materials of North American origin. Collection was performed in United States Department of Agriculture (USDA) inspected facilities and all materials have been inspected and certified to be free of disease and suitable for exportation. All properties listed are typical characteristics and are not specifications. All suggestions and data are offered in good faith but without guarantee as conditions and methods of use of our products are beyond our control. All claims must be made within 30 days following the date of delivery. The prospective user must determine the suitability of our materials before adopting them on a commercial scale. Suggested uses of our products are not recommendations to use our products in violation of any patent or as a license under any patent of Rockland Immunochemicals, Inc. If you require a commercial license to use this material and do not have one, then return this material, unopened to: Rockland Inc., P.O. BOX 5199, Limerick, Pennsylvania, USA.