



SZABO SCANDIC

Part of Europa Biosite

Produktinformation



Forschungsprodukte & Biochemikalien



Zellkultur & Verbrauchsmaterial



Diagnostik & molekulare Diagnostik



Laborgeräte & Service

Weitere Information auf den folgenden Seiten!
See the following pages for more information!



Lieferung & Zahlungsart

siehe unsere [Liefer- und Versandbedingungen](#)

Zuschläge

- Mindermengenzuschlag
- Trockeneiszuschlag
- Gefahrgutzuschlag
- Expressversand

SZABO-SCANDIC HandelsgmbH

Quellenstraße 110, A-1100 Wien

T. +43(0)1 489 3961-0

F. +43(0)1 489 3961-7

mail@szabo-scandic.com

www.szabo-scandic.com

[linkedin.com/company/szaboscandic](https://www.linkedin.com/company/szaboscandic) 

Datasheet for W09-001-GM2**PANC-1 Whole Cell Lysate****Overview**

Description:	PANC-1 Whole Cell Lysate - W09-001-GM2
Item No.:	W09-001-GM2
Size:	500 µg
Applications:	SDS-PAGE
Origin:	Human

Product Details

Background:	Multi-purpose PANC-1 Whole Cell Lysates produced by Rockland Immunochemicals are derived from cell lines using highly refined extraction protocols to ensure exceptionally high quality, protein integrity and lot-to-lot reproducibility. All extracts are tested by SDS-PAGE using 4-20% gradient gels.
Synonyms:	PANC1 Lysate, Cell Lysate, PANC-1 lysate
Species of Origin:	Human

Target Details

Purity/Specificity:	PANC-1 cells were grown in Dulbecco's medium supplemented with 10% fetal bovine serum. Cells were washed with PBS and then incubated on ice in modified RIPA buffer to lyse the cells. Protein integrity was ensured using a cocktail of protease inhibitors with broad specificity for the inhibition of aspartic, cysteine, and serine proteases as well as aminopeptidases (0.1 mM AEBSF HCl, 0.08 µM Aprotinin, 5 µM Bestatin, 1.5 µM E-64, 2 µM Leupeptin Hemisulfate, 1 µM Pepstatin A). Phosphatase inhibitors 1 mM NaF and 1 mM Na3VO4 were also added. Cell debris was removed by centrifugation. Protein concentration was determined by a modified Lowry assay using a commercially available kit. Protein concentration was adjusted to 4 mg/ml with 1X RIPA buffer.
----------------------------	--

Application Details

Tested Applications:	SDS-PAGE
-----------------------------	----------

Application Note: W09-001-GM2 has been tested by SDS-PAGE. Multi-purpose PANC-1 Whole Cell Lysate are especially prepared as positive control for multiple assays including western blot, immunoprecipitation (IP), capture ELISA or other assays requiring native protein sample. For separation by SDS-PAGE and subsequent western blot analysis, lysates should be diluted by user to desired concentration in SDS-PAGE buffer with 2-mercaptoethanol or dithiothreitol as the reducing agent and heated to 95° C for 5 minutes. Sample is ready for use in immunoprecipitation and ELISA experiments, conditions should be optimized by the user. Rockland recommends its TrueBlot IP reagents for immunoprecipitation experiments.

Assay Dilutions:	All assays should be optimized by the user. Recommended dilutions (if any) may be listed below.
ChIP:	User Optimized
IP:	User Optimized
WB:	User Optimized

Cell Line Data

Cell Line:	Human - Epithelioid Carcinoma (Pancreas/Duct)
Lysate Fractionation:	Whole Cell Lysate
Lysate Stimulation:	Not Stimulated
Culture Type:	Tissue Culture
Induction:	None (Control)

Formulation

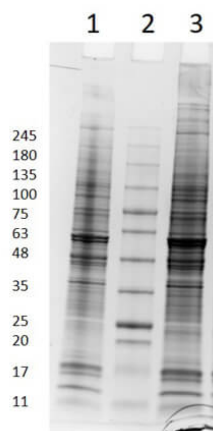
Physical State:	Liquid (sterile filtered)
Concentration:	4.0 mg/ml by modified Lowry assay
Buffer:	1X RIPA Buffer with HALT Protease and Phosphatase Inhibitors
Preservative:	None
Stabilizer:	None

Shipping & Handling

Shipping Condition:	Dry Ice
Storage Condition:	Store vial at -70° C or COLDER. For extended storage, aliquot lysate to minimize freeze/thaw cycles.

Expiration: Expiration date is three (3) months from date of receipt.

Images



SDS-PAGE

SDS PAGE Results of PANC-1 Whole Cell Lysate. Lane 1: PANC-1 Whole Cell Lysate Non-Reduced [10µg]. Lane 2: Opal Prestained Molecular Weight Marker (p/n MB-210-0500). Lane 3: PANC-1 Whole Cell Lysate Reduced [10µg]. 4-20% Gel, Coomassie Stained.

Disclaimer

This product is for research use only and is not intended for therapeutic or diagnostic applications. Please contact a technical service representative for more information. All products of animal origin manufactured by Rockland Immunochemicals are derived from starting materials of North American origin. Collection was performed in United States Department of Agriculture (USDA) inspected facilities and all materials have been inspected and certified to be free of disease and suitable for exportation. All properties listed are typical characteristics and are not specifications. All suggestions and data are offered in good faith but without guarantee as conditions and methods of use of our products are beyond our control. All claims must be made within 30 days following the date of delivery. The prospective user must determine the suitability of our materials before adopting them on a commercial scale. Suggested uses of our products are not recommendations to use our products in violation of any patent or as a license under any patent of Rockland Immunochemicals, Inc. If you require a commercial license to use this material and do not have one, then return this material, unopened to: Rockland Inc., P.O. BOX 5199, Limerick, Pennsylvania, USA.