



SZABO SCANDIC

Part of Europa Biosite

Produktinformation



Forschungsprodukte & Biochemikalien



Zellkultur & Verbrauchsmaterial



Diagnostik & molekulare Diagnostik



Laborgeräte & Service

Weitere Information auf den folgenden Seiten!
See the following pages for more information!



Lieferung & Zahlungsart

siehe unsere [Liefer- und Versandbedingungen](#)

Zuschläge

- Mindermengenzuschlag
- Trockeneiszuschlag
- Gefahrgutzuschlag
- Expressversand

SZABO-SCANDIC HandelsgmbH

Quellenstraße 110, A-1100 Wien

T. +43(0)1 489 3961-0

F. +43(0)1 489 3961-7

mail@szabo-scandic.com

www.szabo-scandic.com

[linkedin.com/company/szaboscandic](https://www.linkedin.com/company/szaboscandic)



Datasheet for W10-000-MQ1**Mouse Lung, Adult, Whole Cell Lysate****Overview**

Description:	Mouse Lung, Adult, Whole Cell Lysate - W10-000-MQ1
Item No.:	W10-000-MQ1
Size:	500 µg
Applications:	SDS-PAGE
Origin:	Mouse

Product Details

Background:	Ready-to-use whole cell lysates produced by Rockland Immunochemicals are derived from cell lines or tissues using highly refined extraction protocols to ensure exceptionally high quality, protein integrity and lot-to-lot reproducibility. All extracts are tested by SDS-PAGE using 4-20% gradient gels and immunoblot analysis using antibodies to key cell signaling components to confirm the presence of both high molecular weight and low molecular weight proteins.
Synonyms:	Normal Mouse Lung Whole Cell Lysate, Normal Mouse Lung WCL, Mouse Lung adult Whole Cell Lysate, Adult Mouse Lung Tissue Lysate
Species of Origin:	Mouse

Target Details

Purity/Specificity:	Tissues were washed exhaustively with PBS to remove blood and other debris. A lysate was prepared by homogenizing the tissue and washing the cells in cold PBS. Washed cells were incubated at 4° C in modified RIPA buffer to lyse the cells. Protein integrity is ensured using a cocktail of protease inhibitors with broad specificity for the inhibition of aspartic, cysteine, and serine proteases as well as aminopeptidases (0.1 mM AEBSF HCl, 0.08 µM Aprotinin, 5 µM Bestatin, 1.5 µM E-64, 2 µM Leupeptin Hemisulfate and 1 µM Pepstatin A). The following phosphatase inhibitors were also added: 1 mM NaF and 1 mM Na3VO4. Cell debris was removed by centrifugation and membrane filtration. Protein concentration was determined by BCA assay using a commercially available kit. The protein concentration was adjusted to 2 mg/mL and then an equal volume of 2X SDS-PAGE sample buffer was added.
----------------------------	--

Application Details

Tested Applications:	SDS-PAGE
Application Note:	W10-000-MQ1 has been tested by SDS-PAGE. Ready-to-use lysates are especially prepared as positive controls for separation by SDS-PAGE and subsequent western blot analysis. Lysates are prepared in denaturing buffer WITHOUT dissociating agents (i.e. no 2-mercaptoethanol or dithiothreitol has been added). Heat lysate to 95° C for 5 minutes and rapidly cool. If dissociating conditions are desired, add reducing agent prior to heating. The recommended loading volume per lane is 10-20 µL depending on the size format of your gel.
Assay Dilutions:	All assays should be optimized by the user. Recommended dilutions (if any) may be listed below.
WB:	User Optimized

Cell Line Data

Cell Line:	Primary tissue
Lysate Fractionation:	Whole Cell Lysate
Lysate Stimulation:	Not Stimulated
Culture Type:	Primary Tissue
Induction:	None (Control)

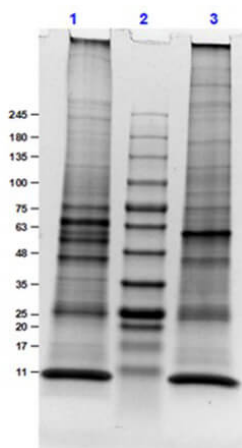
Formulation

Physical State:	Liquid (sterile filtered)
Concentration:	1.0 mg/mL by BCA assay
Buffer:	1X SDS-PAGE Sample Buffer (62.5 mM Tris HCl, 2% SDS, 10% Glycerol and 0.005% bromophenol blue, pH 6.8)
Preservative:	None
Stabilizer:	10% (v/v) Glycerol

Shipping & Handling

Shipping Condition:	Dry Ice
Storage Condition:	Store vial at -70° C or COLDER. For extended storage, aliquot contents to minimize freeze/thaw cycles.
Expiration:	Expiration date is three (3) months from date of receipt.

Images



SDS-PAGE

SDS-PAGE Results of Mouse Lung, Adult, Whole Cell Lysate. Lane 1: Mouse Lung, Adult, Whole Cell Lysate (10µg) Reduced. Lane 2: Opal Prestained Molecular Weight Markers (p/n MB-210-0500). Lane 3: Mouse Lung, Adult, Whole Cell Lysate (10µg) Reduced. Results show wide range of molecular weight bands.

Disclaimer

This product is for research use only and is not intended for therapeutic or diagnostic applications. Please contact a technical service representative for more information. All products of animal origin manufactured by Rockland Immunochemicals are derived from starting materials of North American origin. Collection was performed in United States Department of Agriculture (USDA) inspected facilities and all materials have been inspected and certified to be free of disease and suitable for exportation. All properties listed are typical characteristics and are not specifications. All suggestions and data are offered in good faith but without guarantee as conditions and methods of use of our products are beyond our control. All claims must be made within 30 days following the date of delivery. The prospective user must determine the suitability of our materials before adopting them on a commercial scale. Suggested uses of our products are not recommendations to use our products in violation of any patent or as a license under any patent of Rockland Immunochemicals, Inc. If you require a commercial license to use this material and do not have one, then return this material, unopened to: Rockland Inc., P.O. BOX 5199, Limerick, Pennsylvania, USA.