



# SZABO SCANDIC

Part of Europa Biosite

## Produktinformation



Forschungsprodukte & Biochemikalien



Zellkultur & Verbrauchsmaterial



Diagnostik & molekulare Diagnostik



Laborgeräte & Service

Weitere Information auf den folgenden Seiten!  
See the following pages for more information!



### Lieferung & Zahlungsart

siehe unsere [Liefer- und Versandbedingungen](#)

### Zuschläge

- Mindermengenzuschlag
- Trockeneiszuschlag
- Gefahrgutzuschlag
- Expressversand

### SZABO-SCANDIC HandelsgmbH

Quellenstraße 110, A-1100 Wien

T. +43(0)1 489 3961-0

F. +43(0)1 489 3961-7

[mail@szabo-scandic.com](mailto:mail@szabo-scandic.com)

[www.szabo-scandic.com](http://www.szabo-scandic.com)

[linkedin.com/company/szaboscandic](https://www.linkedin.com/company/szaboscandic) 

**Datasheet for W10-001-GL7****C2C12 Whole Cell Lysate****Overview**

<b>Description:</b>	C2C12 Whole Cell Lysate - W10-001-GL7
<b>Item No.:</b>	W10-001-GL7
<b>Size:</b>	500 µg
<b>Applications:</b>	SDS-PAGE
<b>Origin:</b>	Mouse

**Product Details**

<b>Background:</b>	Multi-purpose C2C12 Whole Cell Lysates produced by Rockland Immunochemicals are derived from cell lines using highly refined extraction protocols to ensure exceptionally high quality, protein integrity and lot-to-lot reproducibility. All extracts are tested by SDS-PAGE using 4-20% gradient gels.
<b>Synonyms:</b>	C2C12 Lysate, Cell Lysate
<b>Species of Origin:</b>	Mouse

**Target Details**

<b>Purity/Specificity:</b>	C2C12 cells were grown in Dulbecco's medium supplemented with 10% fetal bovine serum. Cells were washed with PBS and then incubated on ice in modified RIPA buffer to lyse the cells. Protein integrity was ensured using a cocktail of protease inhibitors with broad specificity for the inhibition of aspartic, cysteine, and serine proteases as well as aminopeptidases (0.1 mM AEBSF HCl, 0.08 µM Aprotinin, 5 µM Bestatin, 1.5 µM E-64, 2 µM Leupeptin Hemisulfate, 1 µM Pepstatin A). Phosphatase inhibitors 1 mM NaF and 1 mM Na3VO4 were also added. Cell debris was removed by centrifugation. Protein concentration was determined by a modified Lowry assay using a commercially available kit. Protein concentration was adjusted to 4 mg/ml with 1X RIPA buffer.
----------------------------	---

**Application Details**

<b>Tested Applications:</b>	SDS-PAGE
-----------------------------	----------

**Application Note:** W10-001-GL7 has been tested by SDS-PAGE. Multi-purpose C2C12 Whole Cell Lysate are especially prepared as positive control for multiple assays including western blot, immunoprecipitation (IP), capture ELISA or other assays requiring native protein sample. For separation by SDS-PAGE and subsequent western blot analysis, lysates should be diluted by user to desired concentration in SDS-PAGE buffer with 2-mercaptoethanol or dithiothreitol as the reducing agent and heated to 95° C for 5 minutes. Sample is ready for use in immunoprecipitation and ELISA experiments, conditions should be optimized by the user. Rockland recommends its TrueBlot IP reagents for immunoprecipitation experiments.

<b>Assay Dilutions:</b>	All assays should be optimized by the user. Recommended dilutions (if any) may be listed below.
<b>ChIP:</b>	User Optimized
<b>IP:</b>	User Optimized
<b>WB:</b>	User Optimized

## Cell Line Data

<b>Cell Line:</b>	Mouse - Myoblast
<b>Lysate Fractionation:</b>	Whole Cell Lysate
<b>Lysate Stimulation:</b>	Not Stimulated
<b>Culture Type:</b>	Tissue Culture
<b>Induction:</b>	None (Control)

## Formulation

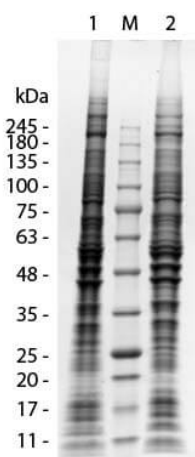
<b>Physical State:</b>	Liquid (sterile filtered)
<b>Concentration:</b>	4.0 mg/ml by BCA assay
<b>Buffer:</b>	1X RIPA Buffer with HALT Protease and Phosphatase Inhibitors
<b>Preservative:</b>	None
<b>Stabilizer:</b>	None

## Shipping & Handling

<b>Shipping Condition:</b>	Dry Ice
<b>Storage Condition:</b>	Store vial at -70° C or COLDER. For extended storage, aliquot lysate to minimize freeze/thaw cycles.

**Expiration:** Expiration date is three (3) months from date of receipt.

## Images



### SDS-PAGE

SDS-PAGE of C2C12 Whole Cell Lysate. Lane 1: C2C12 Whole Cell Lysate, Non-reduced. M: Opal Pre-stained Ladder (p/n MB-210-0500). Lane 2: C2C12 Whole Cell Lysate, Reduced. Load: 10.0 µg per lane.

## Disclaimer

This product is for research use only and is not intended for therapeutic or diagnostic applications. Please contact a technical service representative for more information. All products of animal origin manufactured by Rockland Immunochemicals are derived from starting materials of North American origin. Collection was performed in United States Department of Agriculture (USDA) inspected facilities and all materials have been inspected and certified to be free of disease and suitable for exportation. All properties listed are typical characteristics and are not specifications. All suggestions and data are offered in good faith but without guarantee as conditions and methods of use of our products are beyond our control. All claims must be made within 30 days following the date of delivery. The prospective user must determine the suitability of our materials before adopting them on a commercial scale. Suggested uses of our products are not recommendations to use our products in violation of any patent or as a license under any patent of Rockland Immunochemicals, Inc. If you require a commercial license to use this material and do not have one, then return this material, unopened to: Rockland Inc., P.O. BOX 5199, Limerick, Pennsylvania, USA.