



# SZABO SCANDIC

Part of Europa Biosite

## Produktinformation



Forschungsprodukte & Biochemikalien



Zellkultur & Verbrauchsmaterial



Diagnostik & molekulare Diagnostik



Laborgeräte & Service

Weitere Information auf den folgenden Seiten!  
See the following pages for more information!



### Lieferung & Zahlungsart

siehe unsere [Liefer- und Versandbedingungen](#)

### Zuschläge

- Mindermengenzuschlag
- Trockeneiszuschlag
- Gefahrgutzuschlag
- Expressversand

### SZABO-SCANDIC HandelsgmbH

Quellenstraße 110, A-1100 Wien

T. +43(0)1 489 3961-0

F. +43(0)1 489 3961-7

[mail@szabo-scandic.com](mailto:mail@szabo-scandic.com)

[www.szabo-scandic.com](http://www.szabo-scandic.com)

[linkedin.com/company/szaboscandic](https://www.linkedin.com/company/szaboscandic) 

**Datasheet for WM165-1-01-0010****WM165-1 Viable Cells****Overview**

<b>Description:</b>	WM165-1 Viable Cells - WM165-1-01-0010
<b>Item No.:</b>	WM165-1-01-0010
<b>Size:</b>	10 x 1 million cells
<b>Applications:</b>	Cellular Assay, ELISA
<b>Origin:</b>	Human

**Product Details**

<b>Background:</b>	WM165 is a metastatic human melanoma cell line that displays fibroblastic morphology. This cell line was derived from the same patient as the cell lines WM115, WM239A, and WM266-4. WM115 cell line originated from the primary tumor, and WM266-4, WM165-1 and WM239A were from individual lymph-node metastases. This cell line expresses mutant BRAF (V600D), PTEN loss of function including hemizygous deletion, and wild type N-RAS, c-KIT, and CDK4. WM165 cells produce xenograft tumors when injected into immunocompromised mice.
<b>Synonyms:</b>	Melanoma, patient derived tumor, tumor models, skin cancer, xenograft
<b>Species of Origin:</b>	Human

**Target Details**

<b>Purity/Specificity:</b>	Cells are sterile, validated by short tandem repeat profiling, and are tested as negative for mycoplasma. It is recommended that cell lines are tested for mycoplasma contamination and short tandem repeat (STR) profiling every 10 passages or each time a frozen seed stock is made. See cell culture protocol for additional details.
<b>Relevant Links:</b>	<ul style="list-style-type: none"><li>• <a href="#">Cell Line EULA</a></li><li>• <a href="#">Melanoma Cell Culture Protocol</a></li></ul>

**Application Details**

<b>Suggested Applications:</b>	Cellular Assay, ELISA (Based on references)
--------------------------------	---

**Application Note:** The key applications of these cell lines include genetic studies, xenograft production, drug testing, and drug target discovery. These cell line models can be used in various biological assays, and for identifying critical target genes, and cell signaling pathways.

**Assay Dilutions:** All assays should be optimized by the user. Recommended dilutions (if any) may be listed below.

## Cell Line Data

<b>Cell Line:</b>	Human Melanoma
<b>Product Type:</b>	Viable Cells
<b>Morphology:</b>	fibroblastic
<b>Cell Viability:</b>	Yes
<b>Stage:</b>	Metastasis
<b>BRAF:</b>	V600D
<b>CDK4:</b>	WT
<b>C-Kit:</b>	WT
<b>N-RAS:</b>	WT
<b>PTEN:</b>	Hemizygous Deletion
<b>Paired:</b>	Yes
<b>Medium:</b>	Tumor Specialized Media with 2% HI-FBS
<b>Sub-culture:</b>	Cells should be maintained between 30 – 95% confluence in tumor specialized medium with 2% FBS; split cultures 1:4 every week using 0.25% trypsin/EDTA.
<b>Incubation:</b>	36°C with 5% CO <sub>2</sub>

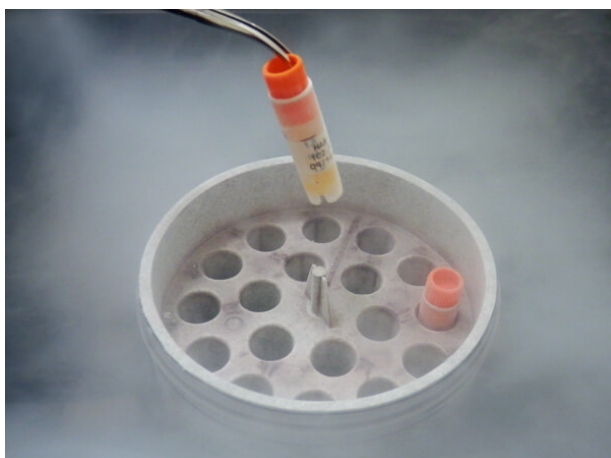
## Formulation

<b>Physical State:</b>	Frozen Cell Suspension
<b>Concentration:</b>	1.0 million cells/mL Count By Hemocytometer
<b>Buffer:</b>	None
<b>Preservative:</b>	None
<b>Stabilizer:</b>	None

## Shipping & Handling

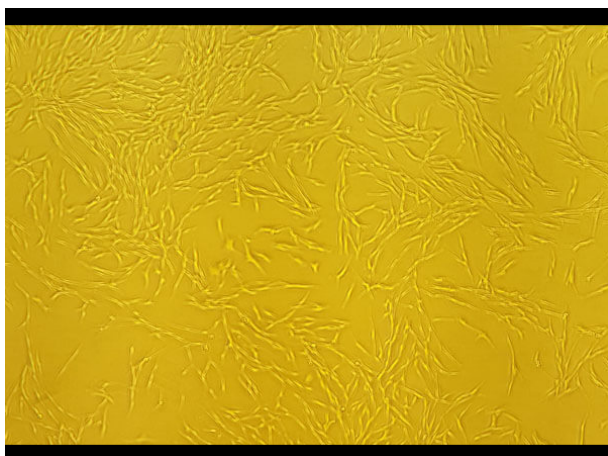
<b>Shipping Condition:</b>	Dry Ice
<b>Storage Condition:</b>	Cells are frozen with 90% FBS/10% DMSO solution at about $10 \times 10^6$ cells/ml. Store vial in liquid nitrogen upon arrival.
<b>Expiration:</b>	Expiration date is two (2) years from date of receipt.

## Images



### Flask

Human melanoma tumor cells with known gene mutations, disease stage, STR, and RPPA profiling



### Viable cell growth

Established WM165-1 viable cell growth in culture using appropriate Tumor Specialized Media with 2%FBS.

## References

- Koroknai V et al. Cytokine and Chemokine Receptor Patterns of Human Malignant Melanoma Cell Lines. *Int J Mol Sci.* (2022)
- Castro-Perez E et al. Melanoma Progression Inhibits Pluripotency and Differentiation of Melanoma-Derived iPSCs Produces Cells with Neural-like Mixed Dysplastic Phenotype. *Stem Cell Reports.* (2019)

## Disclaimer

No test method can provide total assurance that the hepatitis B virus, hepatitis C virus, human immunodeficiency virus, or any other infectious agents are absent. Thus, all blood products, including purified proteins derived from human blood sources, should be handled at Biosafety Level 2 as recommended by the CDC/NIH manual entitled Biosafety in Microbiological and Biomedical Laboratories for potentially infectious human serum, blood specimens or proteins derived from same. Source material for the human blood product supplied to your facility has been tested for the detection of HIV antibody, Hepatitis B surface antigen, antibody to Hepatitis C, HIV 1 antigen(s), antibody to HTLV - I/II, and syphilis by FDA guidelines. All units were found to be non-reactive/negative for these tests. All human blood source material is collected in FDA licensed centers and is tested with FDA approved test kits.

Cell Line Limited Use License Required. THIS PRODUCT IS SUBJECT TO AN END-USER LICENSE AGREEMENT (EULA). BY ACCEPTING THIS PRODUCT, RECIPIENT AGREES TO BE BOUND BY THE TERMS OF USE SET FORTH BELOW and SET FORTH IN THE EULA. THIS PRODUCT IS FOR IN VITRO RESEARCH USE ONLY. THERAPEUTIC, DIAGNOSTIC, OR VETERINARY USE IS PROHIBITED. This product may not be resold or transferred by the recipient and may be used only by the recipient, in the recipient's facility and only for research use and other uses specifically permitted by the EULA. No other commercial use is allowed. "Commercial Use" means any and all uses of this product by recipient or others for monetary or other consideration, including providing services, supplying information or data to unaffiliated third parties, and resale or transfer of this product for any use. Recipient has no right to modify, derivatize, genetically engineer or otherwise create variations of this product or associated cells or cell lines. ROCKLAND AND WISTAR MAKE NO REPRESENTATIONS AND EXTEND NO WARRANTIES OF ANY KIND, EITHER EXPRESSED OR IMPLIED, INCLUDING AS TO MERCHANTABILITY OR FITNESS FOR A PARTICULAR PURPOSE, OR THAT THE USE OF THE PRODUCTS WILL NOT INFRINGE ANY PATENT, COPYRIGHT, TRADEMARK, OR OTHER PROPRIETARY RIGHTS. The terms set forth herein and in the EULA shall be governed by the laws of the Commonwealth of Pennsylvania, USA. To obtain a COMMERCIAL USE license for this product, please contact Rockland Immunochemicals, Inc. Please contact a technical service representative for more information. All properties listed are typical characteristics and are not specifications. All suggestions and data are offered in good faith but without guarantee as conditions and methods of use of our products are beyond our control. All claims must be made within 30 days following the date of delivery. The prospective user must determine the suitability of our materials before adopting them on a commercial scale. Suggested uses of our products are not recommendations to use our products in violation of any patent or as a license under any patent of Rockland Immunochemicals, Inc. If you require a commercial license to use this material and do not have one, then return this material, unopened to: Rockland Inc., P.O. BOX 5199, Limerick, Pennsylvania, USA.