



SZABO SCANDIC

Part of Europa Biosite

Produktinformation



Forschungsprodukte & Biochemikalien



Zellkultur & Verbrauchsmaterial



Diagnostik & molekulare Diagnostik



Laborgeräte & Service

Weitere Information auf den folgenden Seiten!
See the following pages for more information!



Lieferung & Zahlungsart

siehe unsere [Liefer- und Versandbedingungen](#)

Zuschläge

- Mindermengenzuschlag
- Trockeneiszuschlag
- Gefahrgutzuschlag
- Expressversand

SZABO-SCANDIC Handels GmbH

Quellenstraße 110, A-1100 Wien

T. +43(0)1 489 3961-0

F. +43(0)1 489 3961-7

mail@szabo-scandic.com

www.szabo-scandic.com

[linkedin.com/company/szaboscandic](https://www.linkedin.com/company/szaboscandic) 

Datasheet for WM3854-01-0010**WM3854 Viable Cells****Overview**

Description:	WM3854 Viable Cells - WM3854-01-0010
Item No.:	WM3854-01-0010
Size:	10 x 1 million cells
Origin:	Human

Product Details

Background:	WM3854 is a human metastatic melanoma cell line that displays a mesenchymal morphology. This cell line was established from a heavily pigmented metastatic site (right upper flank of back) in a 64-year-old male with superficial and deep inguinal nodes forming a 3.0 cm mass. This cell line contains a Q61L mutation at position 61 in the N-RAS gene which causes increased signaling via the extracellular signal-regulated MAPK/ERK kinase pathways to enhance proliferation. This cell line is known to be wild type for BRAF, c-KIT and CDK4. WM3854 cells produce xenograft tumors when injected into immunocompromised mice.
Synonyms:	Melanoma, patient derived tumor, tumor models, skin cancer, xenograft
Species of Origin:	Human

Target Details

Purity/Specificity:	Cells are sterile, validated by short tandem repeat profiling, and are tested as negative for mycoplasma. It is recommended that cell lines are tested for mycoplasma contamination and short tandem repeat (STR) profiling every 10 passages or each time a frozen seed stock is made. See cell culture protocol for additional details.
Relevant Links:	<ul style="list-style-type: none">• Cell Line EULA• Melanoma Cell Culture Protocol

Application Details

Application Note:	The key applications of these cell lines include genetic studies, xenograft production, drug testing, and drug target discovery. These cell line models can be used in various biological assays, and for identifying critical target genes, and cell signaling pathways.
--------------------------	---

Assay Dilutions: All assays should be optimized by the user. Recommended dilutions (if any) may be listed below.

Cell Line Data

Cell Line:	Human Melanoma
Product Type:	Viable Cells
Morphology:	mesenchymal
Cell Viability:	Yes
Stage:	Metastasis
BRAF:	WT
CDK4:	WT
C-Kit:	WT
N-RAS:	Q61L
PTEN:	ND
Paired:	No
Medium:	Tumor Specialized Media with 2% HI-FBS
Sub-culture:	Cells should be maintained between 30 – 95% confluence in tumor specialized medium with 2% FBS; split cultures 1:5 every 5-6 days using 0.25% trypsin/EDTA.
Incubation:	36°C with 5% CO ₂

Formulation

Physical State:	Frozen Cell Suspension
Concentration:	1.0 million cells/mL Count By Hemocytometer
Buffer:	None
Preservative:	None
Stabilizer:	None

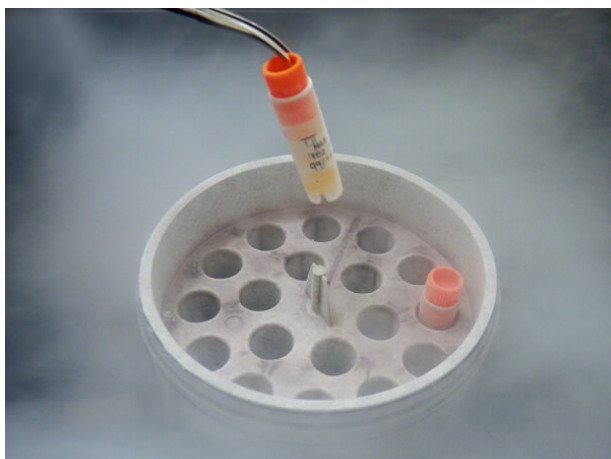
Shipping & Handling

Shipping Condition:	Dry Ice
----------------------------	---------

Storage Condition: Cells are frozen with 90% FBS/10% DMSO solution at about 10×10^6 cells/ml. Store vial in liquid nitrogen upon arrival.

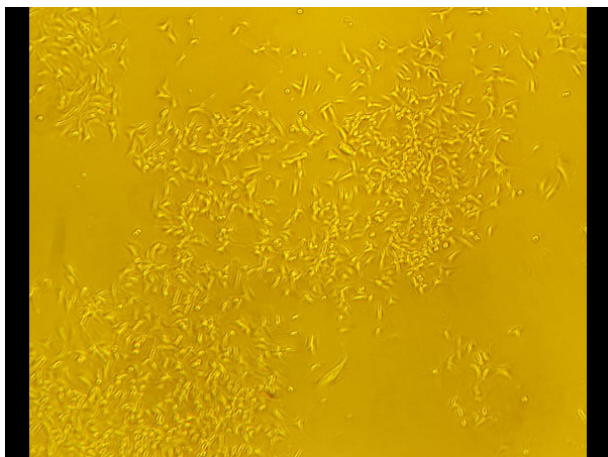
Expiration: Expiration date is two (2) years from date of receipt.

Images



Flask

Human melanoma tumor cells with known gene mutations, disease stage, STR, and RPPA profiling



Viable cell growth

Established WM3854 viable cell growth in culture using appropriate Tumor Specialized Media with 2%FBS.

Disclaimer

No test method can provide total assurance that the hepatitis B virus, hepatitis C virus, human immunodeficiency virus, or any other infectious agents are absent. Thus, all blood products, including purified proteins derived from human blood sources, should be handled at Biosafety Level 2 as recommended by the CDC\NIH manual entitled Biosafety in Microbiological and Biomedical Laboratories for potentially infectious human serum, blood specimens or proteins derived from same. Source material for the human blood product supplied to your facility has been tested for the detection of HIV antibody, Hepatitis B surface antigen, antibody to Hepatitis C, HIV 1 antigen(s), antibody to HTLV - I/II, and syphilis by FDA guidelines. All units were found to be non-reactive/negative for these tests. All human blood source material is collected in FDA licensed centers and is tested with FDA approved test kits.

Cell Line Limited Use License Required. THIS PRODUCT IS SUBJECT TO AN END-USER LICENSE AGREEMENT (EULA). BY ACCEPTING THIS PRODUCT, RECIPIENT AGREES TO BE BOUND BY THE TERMS OF USE SET FORTH BELOW and SET FORTH IN THE EULA. THIS PRODUCT IS FOR IN VITRO RESEARCH USE ONLY. THERAPEUTIC, DIAGNOSTIC, OR VETERINARY USE IS PROHIBITED. This product may not be resold or transferred by the recipient and may be used only by the recipient, in the recipient's facility and only for research use and other uses specifically permitted by the EULA. No other commercial use is allowed. "Commercial Use" means any and all uses of this product by recipient or others for monetary or other consideration, including providing services, supplying information or data to unaffiliated third parties, and resale or transfer of this product for any use. Recipient has no right to modify, derivatize, genetically engineer or otherwise create variations of this product or associated cells or cell lines. ROCKLAND AND WISTAR MAKE NO REPRESENTATIONS AND EXTEND NO WARRANTIES OF ANY KIND, EITHER EXPRESSED OR IMPLIED, INCLUDING AS TO MERCHANTABILITY OR FITNESS FOR A PARTICULAR PURPOSE, OR THAT THE USE OF THE PRODUCTS WILL NOT INFRINGE ANY PATENT, COPYRIGHT, TRADEMARK, OR OTHER PROPRIETARY RIGHTS. The terms set forth herein and in the EULA shall be governed by the laws of the Commonwealth of Pennsylvania, USA. To obtain a COMMERCIAL USE license for this product, please contact Rockland Immunochemicals, Inc. Please contact a technical service representative for more information. All properties listed are typical characteristics and are not specifications. All suggestions and data are offered in good faith but without guarantee as conditions and methods of use of our products are beyond our control. All claims must be made within 30 days following the date of delivery. The prospective user must determine the suitability of our materials before adopting them on a commercial scale. Suggested uses of our products are not recommendations to use our products in violation of any patent or as a license under any patent of Rockland Immunochemicals, Inc. If you require a commercial license to use this material and do not have one, then return this material, unopened to: Rockland Inc., P.O. BOX 5199, Limerick, Pennsylvania, USA.