



SZABO SCANDIC

Part of Europa Biosite

Produktinformation



Forschungsprodukte & Biochemikalien



Zellkultur & Verbrauchsmaterial



Diagnostik & molekulare Diagnostik



Laborgeräte & Service

Weitere Information auf den folgenden Seiten!
See the following pages for more information!



Lieferung & Zahlungsart

siehe unsere [Liefer- und Versandbedingungen](#)

Zuschläge

- Mindermengenzuschlag
- Trockeneiszuschlag
- Gefahrgutzuschlag
- Expressversand

SZABO-SCANDIC HandelsgmbH

Quellenstraße 110, A-1100 Wien

T. +43(0)1 489 3961-0

F. +43(0)1 489 3961-7

mail@szabo-scandic.com

www.szabo-scandic.com

[linkedin.com/company/szaboscandic](https://www.linkedin.com/company/szaboscandic) 

Cruz Marker™ MW Tag: sc-516729

BACKGROUND

Santa Cruz Biotechnology offers Cruz Marker™ Molecular Weight Standards (sc-2035) for use as internal standards in Western Blotting (WB) applications. The ladder consists of six bands: 132 kDa, 90 kDa, 55 kDa, 43 kDa, 34 kDa and 23 kDa, which appear on the final Western blot image after detection with Cruz Marker™ MW Tag antibodies, which recognize an epitope common to each of the Cruz Marker™ molecular weight standards.

Cruz Marker™ MW Tag is offered in multiple formats to allow direct or indirect enhanced chemiluminescence (ECL), RGB, or Near-Infrared (NIR) fluorescence visualization of the Cruz Marker™ MW Standards in Western Blotting, when used in conjunction with unconjugated kappa light chain mouse monoclonal antibodies, or ImmunoCruz® primary antibodies conjugated to either horseradish peroxidase (HRP), Alexa Fluor® 488, Alexa Fluor® 647, Alexa Fluor® 680 or Alexa Fluor® 790.

Unconjugated Cruz Marker™ MW Tag is a mouse IgG, kappa light chain antibody that can be detected using SCBT's mouse IgG kappa binding protein (m-IgGκ BP) conjugated to HRP (sc-516102) for Indirect ECL detection, conjugated to CFL-405 (sc-516175), CFL-488 (sc-516176), CFL-555 (sc-516177), CFL-594 (sc-516178) or CFL-647 (sc-516179) for Indirect RGB detection, and conjugated to CFL-680 (sc-516180) or CFL-790 (sc-516181) for Indirect NIR detection.

Cruz Marker™ MW Tag is also available as HRP conjugate for Direct ECL detection, Alexa Fluor® 488 and Alexa Fluor® 647 conjugates for Direct RGB detection, and as Alexa Fluor® 680 and Alexa Fluor® 790 conjugates, for Direct NIR detection.

PRODUCT

Each vial provided at 500 µl; sufficient for 50 gels. Contains unconjugated mouse IgG kappa light chain antibody in PBS with < 0.1% sodium azide and 0.1% gelatin.

APPLICATIONS

Unconjugated Cruz Marker™ MW Tag antibody is recommended for visualization of Cruz Marker™ Molecular Weight Standards (sc-2035) in Western Blotting, when using SCBT's mouse IgG kappa light chain monoclonal antibodies and mouse IgG kappa binding protein HRP (m-IgGκ BP-HRP) (sc-516102) for Indirect ECL visualization; m-IgGκ BP-CFL 405 (sc-516175), m-IgGκ BP-CFL 488 (sc-516176), m-IgGκ BP-CFL 555 (sc-516177), m-IgGκ BP-CFL 594 (sc-516178), or m-IgGκ BP-CFL 647 (sc-516179) for Indirect RGB visualization; or m-IgGκ BP-CFL 680 (sc-516180) or m-IgGκ BP-CFL 790 (sc-516181) for Indirect NIR visualization.

RECOMMENDED SUPPORT PRODUCTS

- Cruz Marker™ Molecular Weight Standards: sc-2035
- UltraCruz® PVDF Transfer Membrane: sc-3723
- Immobilon®-FL PVDF Membrane: sc-516541
- UltraCruz® Blocking Reagent: sc-516214
- Western Blot Luminol Reagent: sc-2048
- UltraCruz® Autoradiography Film: sc-201697

Alexa Fluor® is a trademark of Molecular Probes, Inc., Oregon, USA

PROCEDURE

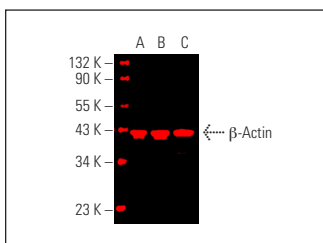
Incubate the membrane with a mixture of the mouse IgG, kappa light chain, monoclonal primary antibody and the unconjugated Cruz Marker™ MW Tag antibody, in UltraCruz® Blocking Reagent (sc-516214), for 2 hours at room temperature with shaking. Wash membrane and incubate it with appropriate m-IgGκ BP secondary in UltraCruz® Blocking Reagent (sc-516214) for all detection methods.

Cruz Marker™ MW Tag starting dilution: 1:1000; dilution range: 1:1000-1:2000. Mouse IgG, kappa light chain, monoclonal primary antibody starting dilution: 1:100; dilution range: 1:100-1:1000. m-IgGκ BP-HRP, m-IgGκ BP-CFL 405, m-IgGκ BP-CFL 488, m-IgGκ BP-CFL 555, m-IgGκ BP-CFL 594, m-IgGκ BP-CFL 647, m-IgGκ BP-CFL 680 or m-IgGκ BP-CFL 790 starting dilution: 1:1000; dilution range 1:1000-1:10000. Optimal dilutions to be determined by titration.

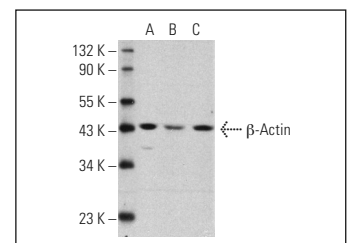
DETECTION TYPE	USE WITH	CAT. #
Indirect ECL	m-IgGκ BP-HRP	sc-516102
Indirect RGB	m-IgGκ BP-CFL 405	sc-516175
	m-IgGκ BP-CFL 488	sc-516176
	m-IgGκ BP-CFL 555	sc-516177
	m-IgGκ BP-CFL 594	sc-516178
	m-IgGκ BP-CFL 647	sc-516179
Indirect NIR	m-IgGκ BP-CFL 680	sc-516180
	m-IgGκ BP-CFL 790	sc-516181

For optimal RGB or NIR detection, use Immobilon®-FL PVDF (sc-516541) and UltraCruz® Blocking Reagent (sc-516214) for both membrane blocking and antibody dilutions. All RGB or NIR steps should be performed in the dark.

DATA



β-Actin (C4): sc-47778. Near-infrared western blot analysis of β-Actin expression in MCF7 (A), NIH/3T3 (B) and KNRK (C) whole cell lysates. Blocked with UltraCruz® Blocking Reagent: sc-516214. Detection reagent used: m-IgGκ BP-CFL 790: sc-516181. Cruz Marker Molecular Weight Standards detected with Cruz Marker MW Tag: sc-516729 and and m-IgGκ BP-CFL 790: sc-516181.



β-Actin (C4): sc-47778. Western blot analysis of β-Actin expression in MCF7 (A), NIH/3T3 (B) and KNRK (C) whole cell lysates. Blocked with UltraCruz® Blocking Reagent: sc-516214. Detection reagent used: m-IgGκ BP-HRP: sc-516102. Cruz Marker Molecular Weight Standards detected with Cruz Marker MW Tag: sc-516729 and and m-IgGκ BP-HRP: sc-516102.

STORAGE

Store at 4° C, **DO NOT FREEZE**. Stable for one year from the date of shipment. Non-hazardous. No SDS required.

RESEARCH USE

For research use only, not for use in diagnostic procedures