



# SZABO SCANDIC

Part of Europa Biosite

## Produktinformation



Forschungsprodukte & Biochemikalien



Zellkultur & Verbrauchsmaterial



Diagnostik & molekulare Diagnostik



Laborgeräte & Service

Weitere Information auf den folgenden Seiten!  
See the following pages for more information!



### Lieferung & Zahlungsart

siehe unsere [Liefer- und Versandbedingungen](#)

### Zuschläge

- Mindermengenzuschlag
- Trockeneiszuschlag
- Gefahrgutzuschlag
- Expressversand

### SZABO-SCANDIC HandelsgmbH

Quellenstraße 110, A-1100 Wien

T. +43(0)1 489 3961-0

F. +43(0)1 489 3961-7

[mail@szabo-scandic.com](mailto:mail@szabo-scandic.com)

[www.szabo-scandic.com](http://www.szabo-scandic.com)

[linkedin.com/company/szaboscandic](https://www.linkedin.com/company/szaboscandic) 

# Scleraxis (A-7): sc-518082

## BACKGROUND

Transcription factors are proteins that bind DNA adjacent to genes and control the production of mRNA transcripts. Scleraxis (basic helix-loop-helix transcription factor scleraxis) is a 201 amino acid protein that dimerizes with another bHLH protein to initiate transcription. Scleraxis is known to play a role in formation of mesoderm and somite-derived chondrogenic lineages. Scleraxis localizes to the nucleus and contains one bHLH domain. bHLH transcription factors, in general, function in cellular differentiation, proliferation, and oncogene regulation. The gene encoding Scleraxis maps to human chromosome 8, which consists of nearly 146 million base pairs, houses more than 800 genes and is associated with a variety of diseases and malignancies. Schizophrenia, bipolar disorder, Trisomy 8, Pfeiffer syndrome, congenital hypothyroidism, Waardenburg syndrome and some leukemias and lymphomas are thought to occur as a result of defects in specific genes that map to chromosome 8.

## REFERENCES

1. Kadesch, T. 1993. Consequences of heteromeric interactions among helix-loop-helix proteins. *Cell Growth Differ.* 4: 49-55.
2. Olson, E.N. and Klein, W.H. 1994. bHLH factors in muscle development: dead lines and commitments, what to leave in and what to leave out. *Genes Dev.* 8: 1-8.
3. Cserjesi, P., Brown, D., Ligon, K.L., Lyons, G.E., Copeland, N.G., Gilbert, D.J., Jenkins, N.A. and Olson, E.N. 1995. Scleraxis: a basic helix-loop-helix protein that prefigures skeletal formation during mouse embryogenesis. *Development* 121: 1099-1110.

## CHROMOSOMAL LOCATION

Genetic locus: SCX (human) mapping to 8q24.3; Scx (mouse) mapping to 15 D3.

## SOURCE

Scleraxis (A-7) is a mouse monoclonal antibody specific for an epitope mapping between amino acids 10-29 near the N-terminus of Scleraxis of human origin.

## PRODUCT

Each vial contains 200 µg IgG<sub>2a</sub> kappa light chain in 1.0 ml of PBS with < 0.1% sodium azide and 0.1% gelatin. Also available as TransCruz reagent for Gel Supershift and ChIP applications, sc-518082 X, 200 µg/0.1 ml.

Scleraxis (A-7) is available conjugated to agarose (sc-518082 AC), 500 µg/0.25 ml agarose in 1 ml, for IP; to HRP (sc-518082 HRP), 200 µg/ml, for WB, IHC(P) and ELISA; to either phycoerythrin (sc-518082 PE), fluorescein (sc-518082 FITC), Alexa Fluor® 488 (sc-518082 AF488), Alexa Fluor® 546 (sc-518082 AF546), Alexa Fluor® 594 (sc-518082 AF594) or Alexa Fluor® 647 (sc-518082 AF647), 200 µg/ml, for WB (RGB), IF, IHC(P) and FCM; and to either Alexa Fluor® 680 (sc-518082 AF680) or Alexa Fluor® 790 (sc-518082 AF790), 200 µg/ml, for Near-Infrared (NIR) WB, IF and FCM.

Alexa Fluor® is a trademark of Molecular Probes, Inc., Oregon, USA

## APPLICATIONS

Scleraxis (A-7) is recommended for detection of Scleraxis of mouse, rat and human origin by Western Blotting (starting dilution 1:100, dilution range 1:100-1:1000), immunoprecipitation [1-2 µg per 100-500 µg of total protein (1 ml of cell lysate)], immunofluorescence (starting dilution 1:50, dilution range 1:50-1:500) and solid phase ELISA (starting dilution 1:30, dilution range 1:30-1:3000).

Suitable for use as control antibody for Scleraxis siRNA (m): sc-153257, Scleraxis shRNA Plasmid (m): sc-153257-SH and Scleraxis shRNA (m) Lentiviral Particles: sc-153257-V.

Scleraxis (A-7) X TransCruz antibody is recommended for Gel Supershift and ChIP applications.

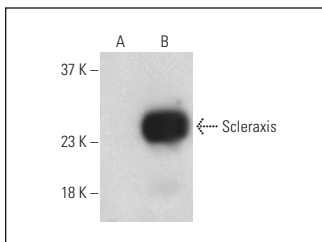
Molecular Weight of Scleraxis: 22 kDa.

Positive Controls: Scleraxis (m): 293T Lysate: sc-123384.

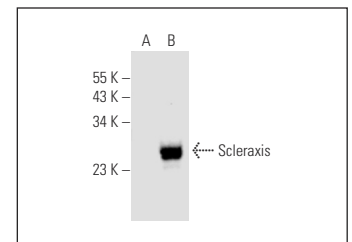
## RECOMMENDED SUPPORT REAGENTS

To ensure optimal results, the following support reagents are recommended: 1) Western Blotting: use m-IgGκ BP-HRP: sc-516102 or m-IgGκ BP-HRP (Cruz Marker): sc-516102-CM (dilution range: 1:1000-1:10000), Cruz Marker™ Molecular Weight Standards: sc-2035, UltraCruz® Blocking Reagent: sc-516214 and Western Blotting Luminol Reagent: sc-2048. 2) Immunoprecipitation: use Protein A/G PLUS-Agarose: sc-2003 (0.5 ml agarose/2.0 ml). 3) Immunofluorescence: use m-IgGκ BP-FITC: sc-516140 or m-IgGκ BP-PE: sc-516141 (dilution range: 1:50-1:200) with UltraCruz® Mounting Medium: sc-24941 or UltraCruz® Hard-set Mounting Medium: sc-359850.

## DATA



Scleraxis (A-7) HRP: sc-518082 HRP. Direct western blot analysis of Scleraxis expression in non-transfected: sc-117752 (A) and mouse Scleraxis transfected: sc-123384 (B) 293T whole cell lysates.



Scleraxis (A-7): sc-518082. Western blot analysis of Scleraxis expression in non-transfected: sc-117752 (A) and mouse Scleraxis transfected: sc-123384 (B) 293T whole cell lysates.

## STORAGE

Store at 4° C, \*\*DO NOT FREEZE\*\*. Stable for one year from the date of shipment. Non-hazardous. No MSDS required.

## RESEARCH USE

For research use only, not for use in diagnostic procedures.

## PROTOCOLS

See our web site at [www.scbt.com](http://www.scbt.com) for detailed protocols and support products.