



# SZABO SCANDIC

Part of Europa Biosite

## Produktinformation



Forschungsprodukte & Biochemikalien



Zellkultur & Verbrauchsmaterial



Diagnostik & molekulare Diagnostik



Laborgeräte & Service

Weitere Information auf den folgenden Seiten!  
See the following pages for more information!



### Lieferung & Zahlungsart

siehe unsere [Liefer- und Versandbedingungen](#)

### Zuschläge

- Mindermengenzuschlag
- Trockeneiszuschlag
- Gefahrgutzuschlag
- Expressversand

### SZABO-SCANDIC HandelsgmbH

Quellenstraße 110, A-1100 Wien

T. +43(0)1 489 3961-0

F. +43(0)1 489 3961-7

[mail@szabo-scandic.com](mailto:mail@szabo-scandic.com)

[www.szabo-scandic.com](http://www.szabo-scandic.com)

[linkedin.com/company/szaboscandic](https://www.linkedin.com/company/szaboscandic) 

## Lieb's Crystal Violet for Amyloid

**Description:** The use of Crystal Violet for metachromatically staining amyloid was published in 1947 by Ethel Lieb. This stain utilizes a water-reliant metachromatic staining reaction giving reddish amyloid with a blue background. A water-based mounting medium is required to retain permanence of red amyloid coloring.

Amyloid:           Reddish Violet  
Background:       Blue Violet

**Uses/Limitations:** Not to be taken internally.  
For Research use only.  
Histological applications.  
Do not use if reagents become cloudy.  
Do not use past expiration date.  
Use caution when handling reagents.  
Non-Sterile.

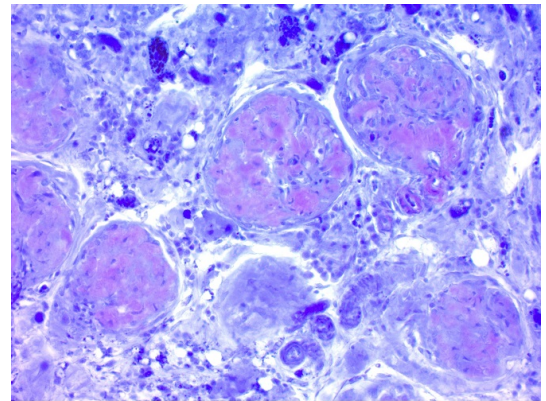
**Control Tissue:** Tissue containing amyloid, freshly cut at 5-10µm

**Storage:** Room temperature

**Precautions:** Keep away from open flame.  
Avoid contact with skin and eyes.  
Harmful if swallowed.  
Follow all Federal, State, and local regulations regarding disposal.

**Notes:** When it is suspected that the amount of amyloid might be small, as in hyalinized islets of Langerhans, thicker sections should be cut in order to render the color reaction readily visible.

Lieb's Crystal Violet does not stain all types of amyloid as well as Congo red. Lieb's Crystal violet usually better demonstrates amyloid in heart muscle than Congo red.




Lieb's Crystal Violet Solution staining at 20X on Dog Kidney. Incubation time - 5 minutes.


### Procedure:

1. Deparaffinize tissue and hydrate to water if needed.
2. Apply Lieb's Crystal Violet for 5 minutes.
3. Rinse excess stain from slide with deionized water.
4. Mount in Apathy's mounting media, or ScyTek's Buffered Glycerol Mounting Medium (Product ID: GMM)

### References:

1. LIEB E. Permanent stain for amyloid. Am J Clin Pathol. 1947 May;17(5):413

Storage: 18° C  25° C

 ScyTek Laboratories, Inc.  
205 South 600 West  
Logan, UT 84321  
U.S.A.