



SZABO SCANDIC

Part of Europa Biosite

Produktinformation



Forschungsprodukte & Biochemikalien



Zellkultur & Verbrauchsmaterial



Diagnostik & molekulare Diagnostik



Laborgeräte & Service

Weitere Information auf den folgenden Seiten!
See the following pages for more information!



Lieferung & Zahlungsart

siehe unsere [Liefer- und Versandbedingungen](#)

Zuschläge

- Mindermengenzuschlag
- Trockeneiszuschlag
- Gefahrgutzuschlag
- Expressversand

SZABO-SCANDIC HandelsgmbH

Quellenstraße 110, A-1100 Wien

T. +43(0)1 489 3961-0

F. +43(0)1 489 3961-7

mail@szabo-scandic.com

www.szabo-scandic.com

[linkedin.com/company/szaboscandic](https://www.linkedin.com/company/szaboscandic) 

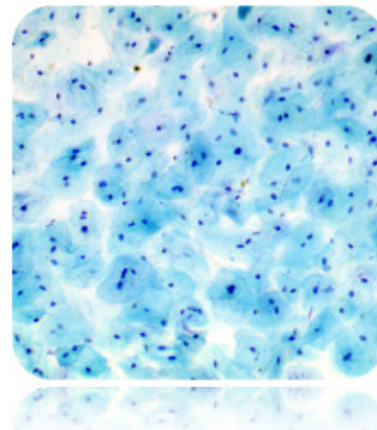
Methylene Blue Solution

Description: Methylene Blue Solution has been optimized in our research laboratories to give outstanding results when used in various procedures such as the Ziehl-Neelsen, Fite’s, and Gram stain. The stain is also suggested for use in staining a variety of bacteria (*Corynebacterium diphtheria*, *Haemophilus influenzae*, *Neisseria*, etc.) and leukocytes. This reagent produces dark blue nuclei with very light blue cytoplasm.

Nuclei:	Dark Blue
Cytoplasm:	Light Blue
<i>Corynebacterium Diphtheria</i> :	Blue Granules
<i>Escherichia Coli</i> :	Blue Rods
<i>Streptococcus Pyogenes</i> :	Blue Cocci

Uses/Limitations: Not to be taken internally.
For In-Vitro Diagnostic use only.
Histological applications.
Do not use if reagents become cloudy.
Do not use past expiration date.
Use caution when handling reagents.
Non-Sterile.

Control Tissue: Cytology Smear.
Mucus Smear.
Fecal Smear.




Ordering Information and Current Pricing at www.scytek.com

Availability:	<u>Item #</u>	<u>Volume</u>
	MBS125	125 ml
	MBS500	500 ml
	MBS999	1000 ml

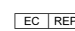
Storage: 18-25°C.

Precautions: Avoid contact with skin and eyes.
Harmful if swallowed.
Follow all Federal, State, and local regulations regarding disposal.

Storage: 18° C  25° C

 ScyTek Laboratories, Inc.
205 South 600 West
Logan, UT 84321
U.S.A.

 EmergoEurope (31)(0) 70 345-8570
Molsnstraat 15
2513 BH Hague, The Netherlands

Procedure:


1. Deparaffinize sections if necessary and hydrate to distilled water.
2. Apply adequate Methylene Blue Solution to completely cover tissue section and incubate for 1-3 minutes.
3. Rinse slide using absolute alcohol.
4. Dehydrate in 2 changes of absolute alcohol.
5. Clear, and mount in synthetic resin.

Alternative: After staining, rinse briefly in distilled water (2-3 dips), allow slide to air dry, clear in xylene or xylene replacement, and mount in synthetic resin.

References:

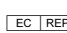
1. Clark G., et al. Staining Procedures, 4th Edition. Williams & Wilkins, Baltimore, MD. Pages 380-381, 1981.
2. Misra, V., Misra, S.P., Dwivedi, M., Gupta, S.C. The Loeffler's methylene blue stain: an inexpensive and rapid method for detection of *Helicobacter pylori*. Journal of Gastroenterology and Hepatology. Sept.-Oct. 1994, volume 9(5): pages 512-513.

Storage: 18° C  25° C



ScyTek Laboratories, Inc.
205 South 600 West
Logan, UT 84321
U.S.A.

 EmergoEurope (31)(0) 70 345-8570
Molsnstraat 15
2513 BH Hague, The Netherlands