



SZABO SCANDIC

Part of Europa Biosite

Produktinformation



Forschungsprodukte & Biochemikalien



Zellkultur & Verbrauchsmaterial



Diagnostik & molekulare Diagnostik



Laborgeräte & Service

Weitere Information auf den folgenden Seiten!
See the following pages for more information!



Lieferung & Zahlungsart

siehe unsere [Liefer- und Versandbedingungen](#)

Zuschläge

- Mindermengenzuschlag
- Trockeneiszuschlag
- Gefahrgutzuschlag
- Expressversand

SZABO-SCANDIC HandelsgmbH

Quellenstraße 110, A-1100 Wien

T. +43(0)1 489 3961-0

F. +43(0)1 489 3961-7

mail@szabo-scandic.com

www.szabo-scandic.com

[linkedin.com/company/szaboscandic](https://www.linkedin.com/company/szaboscandic)



AMACR / p504S (Prostate Cancer Marker); Clone AMACR/2748R (Concentrate)


Availability/Contents:

<u>Item #</u>	<u>Volume</u>
RA0526-C.1	0.1 ml
RA0526-C.5	0.5 ml
RA0526-C1	1 ml

Description:

Species:	Rabbit
Immunogen:	Recombinant human AMACR protein fragment (around aa 297-394), exact sequence is proprietary.
Clone:	AMACR/2748R
Isotype:	IgG
Entrez Gene ID:	23600
Hu Chromosome Loc.:	5p13.3
Synonyms:	Alpha-methylacyl-Co-A Racemase, CBAS4, Da1-8, Macr1, RACE, RM.
Mol. Weight of Antigen:	42kDa
Format:	200ug/ml of antibody purified from Bioreactor Concentrate by Protein A/G. Prepared in 10mM PBS with 0.05% BSA & 0.05% azide.
Specificity:	This antibody recognizes a protein of 42kDa, which is identified as AMACR, also known as p504S.
Background:	The protein recognized by this antibody is an enzyme that is involved in bile acid biosynthesis and –oxidation of branched-chain fatty acids. AMACR is essential in lipid metabolism. It is expressed in cells of premalignant high-grade prostatic intraepithelial neoplasia (HGPIN) and prostate adenocarcinoma. The majority of the carcinoma cells show a distinct granular cytoplasmic staining pattern. AMACR is present at low or undetectable levels in glandular epithelial cells of normal prostate and benign prostatic hyperplasia. A spotty granular cytoplasmic staining is seen in a few cells of the benign glands. AMACR is expressed in normal liver (hepatocytes), kidney (tubular epithelial cells) and gall bladder (epithelial cells). Expression has also been found in lung (bronchial epithelial cells) and colon (colonic surface epithelium). AMACR expression can also be found in hepatocellular carcinoma and kidney carcinoma. Past studies have also shown that AMACR is expressed in various colon carcinomas (well, moderately and poorly differentiated) and over expressed in prostate carcinoma.
Species Reactivity:	Human. Others not known.
Positive Control:	HEK cells, Prostate Adenocarcinoma.
Cellular Localization:	Cytoplasmic (granular).
Titer/ Working Dilution:	Immunohistochemistry (Formalin-fixed): 1:20 – 1:40
Microbiological State:	This product is not sterile.

Storage: 2° C  8° C



ScyTek Laboratories, Inc.
205 South 600 West
Logan, UT 84321
U.S.A.

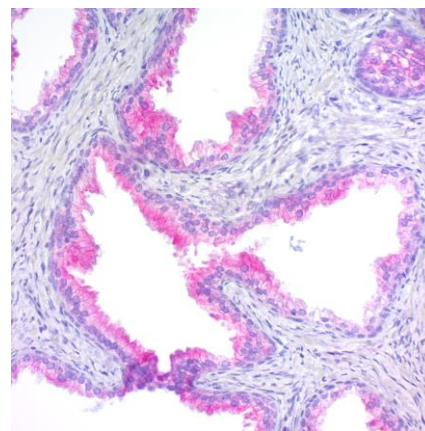
CE

EC REP

Emergo Europe
Prinsessegracht 20
2514 AP The Hague, The Netherlands

Uses/Limitations:

- Not to be taken internally.
- For Research Use Only.
- This product is intended for qualitative immunohistochemistry with normal and neoplastic formalin-fixed, paraffin-embedded tissue sections, to be viewed by light microscopy.
- Do not use if reagent becomes cloudy.
- Do not use past expiration date.
- Non-Sterile.



FFPE Prostate adenocarcinoma stained with AMACR; Clone AMACR/2748R. 200X magnification.

Ordering Information and Current Pricing at www.scytek.com

Procedure:

- Tissue Section Pretreatment (Required):** Staining of formalin fixed, paraffin embedded tissue sections is significantly enhanced by pretreatment with Citrate Plus (ScyTek catalog# CPL500).
- Primary Antibody Incubation Time:** We suggest an incubation period of 30 minutes at room temperature. However, depending upon the fixation conditions and the staining system employed, optimal incubation should be determined by the user.
- Visualization:** For maximum staining intensity we recommend the “CRF Anti-Polyvalent HRP Polymer (DAB) Lab Pack” (ScyTek catalog# CPP125, see IFU for instructions), combined with the “DAB Chromogen/Substrate Bulk Pack (High Contrast)” (ScyTek catalog# ACV500, see IFU for instructions).

Precautions:

- Contains Sodium Azide as a preservative (0.09% w/v).
- Do not pipette by mouth.
- Avoid contact of reagents and specimens with skin and mucous membranes.
- Avoid microbial contamination of reagents or increased nonspecific staining may occur.
- This product contains no hazardous material at a reportable concentration according to U.S. 29 CFR 1910.1200, OSHA Hazardous Communication Standard and EC Directive 91/155/EC.


References:

- Jiang A et. al. Am J Surg Pathology, 2001; 25(11): 1397.
- Jiang A et. al. Human Pathology, 2003; 34(8) 792.

Warranty:

No products or “Instructions For Use (IFU)” are to be construed as a recommendation for use in violation of any patents. We make no representations, warranties or assurances as to the accuracy or completeness of information provided on our IFU or website. Our warranty is limited to the actual price paid for the product. ScyTek Laboratories, Inc. is not liable for any property damage, personal injury, time or effort or economic loss caused by our products. Immunohistochemistry is a complex technique involving both histological and immunological detection methods. Tissue processing and handling prior to immunostaining can cause inconsistent results. Variations in fixation and embedding or the inherent nature of the tissue specimen may cause variations in results. Endogenous peroxidase activity or pseudoperoxidase activity in erythrocytes and endogenous biotin may cause non-specific staining depending on detection system used.

Storage: 2° C  8° C

 ScyTek Laboratories, Inc.
205 South 600 West
Logan, UT 84321
U.S.A.

CE

EC REP

Emergo Europe
Prinsessegracht 20
2514 AP The Hague, The Netherlands