



# SZABO SCANDIC

Part of Europa Biosite

## Produktinformation



Forschungsprodukte & Biochemikalien



Zellkultur & Verbrauchsmaterial



Diagnostik & molekulare Diagnostik



Laborgeräte & Service

Weitere Information auf den folgenden Seiten!  
See the following pages for more information!



### Lieferung & Zahlungsart

siehe unsere [Liefer- und Versandbedingungen](#)

### Zuschläge

- Mindermengenzuschlag
- Trockeneiszuschlag
- Gefahrgutzuschlag
- Expressversand

### SZABO-SCANDIC HandelsgmbH

Quellenstraße 110, A-1100 Wien

T. +43(0)1 489 3961-0

F. +43(0)1 489 3961-7

[mail@szabo-scandic.com](mailto:mail@szabo-scandic.com)

[www.szabo-scandic.com](http://www.szabo-scandic.com)

[linkedin.com/company/szaboscandic](https://www.linkedin.com/company/szaboscandic) 



# Instructions For Use

## TRG-IFU

205 South 600 West Logan, Utah 84323, U.S.A. – Tel. (800) 729-8350 – Tel. (435) 755-9848 – Fax (435) 755-0015 – www.scytek.com Rev. 5, 7/27/2022

## Trichrome Stain Kit

(Modified Gomori's)

### Description and Principle

The Trichrome Stain Kit (Modified Gomori's) is intended for use in the histological visualization of collagenous connective tissue fibers in tissue sections. The Gomori Trichrome is a more simplified procedure than other more traditional trichromes. Additionally, this procedure is useful in the assessment of the degree of fibrosis in liver biopsies.

Sections are first mordanted with heated Bouin's Fluid which acts to intensify the subsequent trichrome staining. This kit combines a plasma stain, a connective tissue stain, and a phosphoacid into a 1-step single solution stain.

### Expected Results

Collagen:	Blue
Muscle Fibers:	Red
Nuclei:	Dark Red to Black/Blue

### Kit Contents

Kit Contents	Storage
1. Bouin's Fluid	18-25°C
2. Hematoxylin, Weigert's Iron (Part A)	18-25°C
3. Hematoxylin, Weigert's Iron (Part B)	18-25°C
4. Trichrome Stain Solution (Blue)	18-25°C
5. Acetic Acid Solution (0.5%)	18-25°C
6. Alcohol Solution (0.5%)	18-25°C

### Suggested Controls (not provided)

Lung, Liver, Colon, Stomach.

### Uses/Limitations

For In-Vitro Diagnostic use only.

Do not use if reagents become cloudy or precipitate

Do not use past expiration date.

Use caution when handling reagents.

Non-Sterile

Intended for FFPE sections cut at 5-10µm.

This procedure has not been optimized for frozen sections.

Frozen sections may require protocol modification.

### Storage

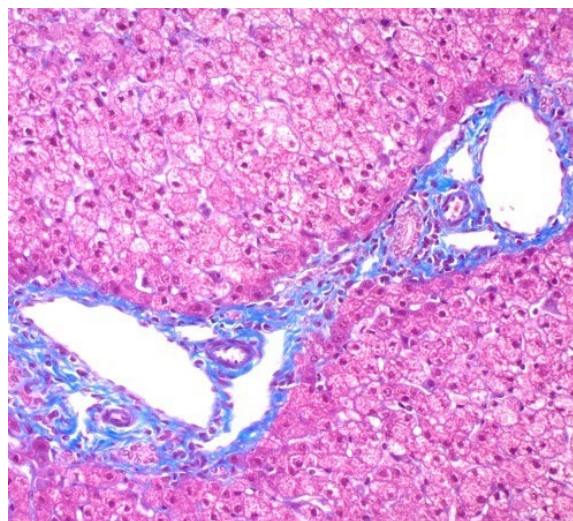
Store kit and all components at room temperature (18-25°C).

### Safety and Precautions

Please see current Safety Data Sheets (SDS) for this product and components GHS classification, pictograms, and full hazard/precautionary statements.

### Procedure:

1. Deparaffinize sections if necessary and hydrate to distilled water.
2. Preheat Bouin's Fluid in a water bath to 62° - 64° centigrade in a fume hood or very well ventilated area.
3. Place slides in preheated Bouin's Fluid for 60 minutes followed by a 10 minute cooling period.
4. Rinse slide in tap water until section is completely clear.
5. Rinse 1 time in distilled water.



Human Liver stained with Trichrome Stain Kit (Modified Gomori's) viewed at 100X magnification

6. Mix equal parts of Weigert's (A) and Weigert's (B) and stain slide with working Weigert's Iron Hematoxylin for 2-10 minutes. Stain is alcoholic and prone to evaporation – monitor and add stain as necessary to ensure stain does not dry on slide. Dried stain may result in excess grey background.

7. Rinse slide in tap water for 2 minutes.

8. Apply Acid Alcohol Solution (0.5%) to slide for 5 seconds to adjust pH and remove excess stain.

9. Rinse slide in tap water for 1 minute.

10. Rinse slide 1 time in distilled water.

11. Apply Trichrome Stain (Blue) to tissue section and incubate for 15 minutes.

12. Rinse slide quickly in distilled water.

13. Apply Acetic Acid Solution (0.5%) to tissue section for 10 seconds.

14. Rinse slide using absolute alcohol.

15. Dehydrate in 2 changes of absolute alcohol, clear, and mount in synthetic resin.

### References

1. Ota, H., Kodama, A. Dasatinib plus quercetin attenuates some frailty characteristics in SAMP10 mice. *Sci Rep* 12, 2425 (2022). <https://doi.org/10.1038/s41598-022-06448-5>
2. Tosic, M., Allen, A., Willmann, D. et al. Lsd1 regulates skeletal muscle regeneration and directs the fate of satellite cells. *Nat Commun* 9, 366 (2018). <https://doi.org/10.1038/s41467-017-02740-5>
3. Zuyue Sun, Jill Schriewer, Mingxin Tang, Jerry Marlin, Frederick Taylor, Ralph V. Shohet, Eugene A. Konorev, The TGF-β pathway mediates doxorubicin effects on cardiac endothelial cells, *Journal of Molecular and Cellular Cardiology*, Volume 90, 2016, Pages 129-138, ISSN 0022-2828, <https://doi.org/10.1016/j.yjmcc.2015.12.010>.

4. E. Kniازهva, S. Kachgal, and A. J. Putnam, "Effects of Extracellular Matrix Density and Mesenchymal Stem Cells on Neovascularization In Vivo," *Tissue Engineering Part A*, vol. 17, no. 7-8, pp. 905-914, Apr. 2011.
5. Trethewey, D., et al. Should Trichrome Stain Be Used on All Post-Liver Transplant Biopsies with Hepatitis C Virus Infection To Estimate the Fibrosis Score? *Liver Transplantation*, May; 14(5): pages 695-700, 2008.
6. Carson, F.L., *Histotechnology: A Self-Instructional Text*, 2nd Edition. ASCP Press, Chicago, IL. Pages 117-121, 1996.
7. *Manual of Histologic Staining Methods of AFIP*. 3rd Edition, McGraw-Hill Publishing. Page 93, 1968.
8. Gomori, G.L., A rapid one-step trichrome. *Amer J of Clinical Pathology*. Vol. 20: page 661, 1950.
9. Elbadawi, A., Hexachrome modification of Movat's stain. *Stain Technology*, Vol. 51: pages 249-253, 1976.



ScyTek Laboratories, Inc.  
205 South 600 West  
Logan, UT 84321  
435-755-9848  
U.S.A.



EC REP  
Emergo Europe  
Prinsessegracht 20  
2514 AP The Hague, The Netherlands