



SZABO SCANDIC

Part of Europa Biosite

Produktinformation



Forschungsprodukte & Biochemikalien



Zellkultur & Verbrauchsmaterial



Diagnostik & molekulare Diagnostik



Laborgeräte & Service

Weitere Information auf den folgenden Seiten!
See the following pages for more information!



Lieferung & Zahlungsart

siehe unsere [Liefer- und Versandbedingungen](#)

Zuschläge

- Mindermengenzuschlag
- Trockeneiszuschlag
- Gefahrgutzuschlag
- Expressversand

SZABO-SCANDIC HandelsgmbH

Quellenstraße 110, A-1100 Wien

T. +43(0)1 489 3961-0

F. +43(0)1 489 3961-7

mail@szabo-scandic.com

www.szabo-scandic.com

[linkedin.com/company/szaboscandic](https://www.linkedin.com/company/szaboscandic) 

Beta-Lapachone

DNA topoisomerase I inhibitor

Catalog No. SIH-589



Discovery through partnership | Excellence through quality

Product Name

Beta-Lapachone

Description

DNA topoisomerase I inhibitor

Purity

>98% (HPLC); NMR (conforms)

CAS No.

4707-32-8

Molecular Formula

$C_{15}H_{14}O_3$

Molecular Weight

242.3

Field Of Use

Not for use in humans. Not for use in diagnostics or therapeutics. For in vitro research use only.

Properties

Storage Temperature

-20°C

Shipping Temperature

Shipped Ambient

Product Type

Inhibitor

Solubility

May be dissolved in DMSO (35 mg/ml); or Ethanol (15 mg/ml)

Source

Synthetic

Appearance

Orange powder

SMILES

CC1(CCC2=C(O1)C3=CC=CC=C3C(=O)C2=O)C

InChI

InChI=1S/C15H14O3/c1-15(2)8-7-11-13(17)12(16)9-5-3-4-6-10(9)14(11)18-15/h3-6H,7-8H2,1-2H3

InChIKey

QZPQTZZNNJUOLS-UHFFFAOYSA-N

Safety Phrases

May be harmful by inhalation, ingestion, or skin absorption. May cause eye, skin, or respiratory system irritation.

Cite This Product

Beta-Lapachone (StressMarq Biosciences Inc., Victoria BC CANADA, Catalog # SIH-589)

Biological Description

Alternative Names

3,4-Dihydro-2,2-dimethyl-2H-naphtho[1,2-b]pyran-5,6-dione; NSC-26326

Research Areas

Cell Signaling, DNA Synthesis, DNA/RNA, Epigenetics and Nuclear Signaling, Topoisomerases

PubChem ID

3885

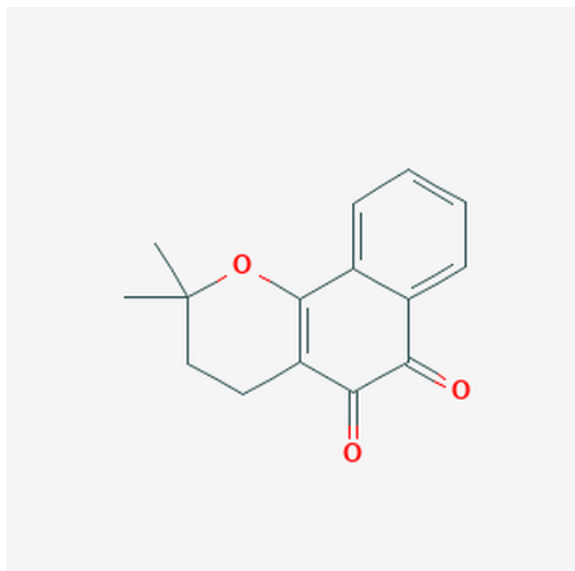
Scientific Background

β -Lapachone is a naturally occurring quinone obtained from the bark of the lapacho tree (*Tabebuia avellanedae*) with cancer chemopreventive properties. It induces apoptosis in HL-60 and human prostate cancer cells.

References

1. Planchon S.M., et al. (1995) Cancer Research. 55(17): 3706-3711.

Product Images



Chemical structure of Beta-Lapachone (SIH-589), a DNA topoisomerase I inhibitor. CAS #: 4707-32-8. Molecular Formula: C₁₅H₁₄O₃. Molecular Weight: 242.3 g/mol.

Product Citations (0)

Currently there are no citations for this product.

Reviews

There are no reviews yet.

© 2020 stressmarq.com