



SZABO SCANDIC

Part of Europa Biosite

Produktinformation



Forschungsprodukte & Biochemikalien



Zellkultur & Verbrauchsmaterial



Diagnostik & molekulare Diagnostik



Laborgeräte & Service

Weitere Information auf den folgenden Seiten!
See the following pages for more information!



Lieferung & Zahlungsart

siehe unsere [Liefer- und Versandbedingungen](#)

Zuschläge

- Mindermengenzuschlag
- Trockeneiszuschlag
- Gefahrgutzuschlag
- Expressversand

SZABO-SCANDIC HandelsgmbH

Quellenstraße 110, A-1100 Wien

T. +43(0)1 489 3961-0

F. +43(0)1 489 3961-7

mail@szabo-scandic.com

www.szabo-scandic.com

[linkedin.com/company/szaboscandic](https://www.linkedin.com/company/szaboscandic) 

Anle138b

Synuclein aggregation inhibitor
Catalog No. SIH-607



Discovery through Partnership | Excellence through Quality

Product Name

Anle138b

Description

Synuclein aggregation inhibitor

Purity

>98% (HPLC); NMR (conforms)

CAS No.

882697-00-9

Molecular Formula

$C_{16}H_{11}BrN_2O_2$

Molecular Weight

343.2

Field Of Use

Not for use in humans. Not for use in diagnostics or therapeutics. For in vitro research use only.

Properties

Storage Temperature

-20°C

Shipping Temperature

Shipped Ambient

Product Type

Inhibitor

Solubility

May be dissolved in DMSO (15 mg/ml, warm)

Source

Synthetic

Appearance

White powder

SMILES

BrC1=CC(C2=CC(C3=CC(OCO4)=C4C=C3)=NN2)=CC=C1

InChI

1S/C16H11BrN2O2/c17-12-3-1-2-10(6-12)13-8-14(19-18-13)11-4-5-15-16(7-11)21-9-20-15/h1-8H,9H2,(H,18,19)

InChIKey

RCQIIBJSUWYYFU-UHFFFAOYSA-N

Safety Phrases

Classification: Warning. Hazard Statements

H315 - H319 - H335

Precautionary Statements

P261 - P264 - P271 - P280 - P302 + P352 - P305 + P351 + P338

Cite This Product

Anle138b (StressMarq Biosciences Inc., Victoria BC CANADA, Catalog # SIH-607)

Biological Description

Alternative Names

3-(1,3-Benzodioxol-5-yl)-5-(3-bromophenyl)-1H-pyrazole, 5-(1,3-Benzodioxol-5-yl)-3-(3-bromophenyl)-1H-pyrazole, Anle 138b, CID 44608289

Research Areas

Neurodegeneration, Neuroscience, Parkinson's Disease, Synuclein

PubChem ID

44608289

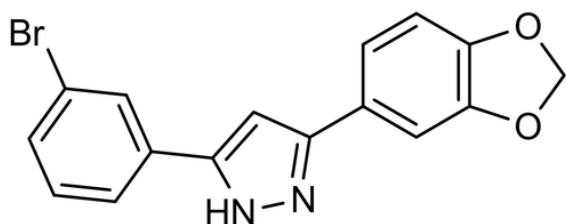
Scientific Background

Anle138b is an oligomeric aggregation inhibitor that inhibits the formation of pathological prion protein (PrP^{Sc}) and α -synuclein aggregates in vitro. Anle138b prevents accumulation of PrP^{Sc} in the brain and the spleen. Anle138b exhibits neuroprotective effects in a Parkinson's disease mouse model and improves motor performance in an α -synucleinopathy model.

References

1. Wagner J. et al. (2013) Acta Neuropathol. 125 (6): 795-813.
-

Product Images



Chemical structure of Anle138b (SIH-607), a Synuclein aggregation inhibitor. CAS #: 882697-00-9. Molecular Formula: C₁₆H₁₁BrN₂O₂. Molecular Weight: 343.2 g/mol.

Product Citations (0)

Currently there are no citations for this product.

Reviews

There are no reviews yet.