



# SZABO SCANDIC

Part of Europa Biosite

## Produktinformation



Forschungsprodukte & Biochemikalien



Zellkultur & Verbrauchsmaterial



Diagnostik & molekulare Diagnostik



Laborgeräte & Service

Weitere Information auf den folgenden Seiten!  
See the following pages for more information!



### Lieferung & Zahlungsart

siehe unsere [Liefer- und Versandbedingungen](#)

### Zuschläge

- Mindermengenzuschlag
- Trockeneiszuschlag
- Gefahrgutzuschlag
- Expressversand

### SZABO-SCANDIC HandelsgmbH

Quellenstraße 110, A-1100 Wien

T. +43(0)1 489 3961-0

F. +43(0)1 489 3961-7

[mail@szabo-scandic.com](mailto:mail@szabo-scandic.com)

[www.szabo-scandic.com](http://www.szabo-scandic.com)

[linkedin.com/company/szaboscandic](https://www.linkedin.com/company/szaboscandic) 

# Anti-Clcn3 Antibody [S258-5]

Mouse Anti-Rat Clcn3 Monoclonal IgG1  
Catalog No. SMC-408



Discovery through partnership | Excellence through quality

## Overview

---

### Product Name

Clcn3 Antibody

### Description

Mouse Anti-Rat Clcn3 Monoclonal IgG1

### Species Reactivity

Human, Mouse, Rat

### Applications

WB, IHC, ICC/IF

### Antibody Dilution

WB (1:1000), IHC (1:1000), ICC/IF (1:100); optimal dilutions for assays should be determined by the user.

### Host Species

Mouse

### Immunogen Species

Rat

### Immunogen

Synthetic peptide amino acids 98-115 (cytoplasmic N-terminus) of rat Clcn3

### Concentration

1 mg/ml

### Conjugates

Alkaline Phosphatase, APC, ATTO 390, ATTO 488, ATTO 565, ATTO 594, ATTO 633, ATTO 655, ATTO 680, ATTO 700, Biotin, FITC, HRP, PE/ATTO 594, PerCP, RPE, Streptavidin, Unconjugated

## Properties

---

### Storage Buffer

PBS pH7.4, 50% glycerol, 0.09% sodium azide

### Storage Temperature

-20°C

### Shipping Temperature

Blue Ice or 4°C

### Purification

---

Protein G Purified

---

**Clonality**

---

Monoclonal

---

**Clone Number**

---

S258-5

---

**Isotype**

---

IgG1

---

**Specificity**

---

Detects ~90kDa. Does not cross-react with Clcn4 or Clcn5 (based on KO validation results).

---

**Cite This Product**

---

Mouse Anti-Rat CLCN3 Monoclonal, Clone S258-5 (StressMarq Biosciences Inc., Victoria BC CANADA, Catalog # SMC-408)

---

**Certificate Of Analysis**

---

1 µg/ml of SMC-408 was sufficient for detection of Clcn3 in 20 µg of rat brain membrane lysate and assayed by colorimetric immunoblot analysis using goat anti-mouse IgG:HRP as the secondary antibody.

---

**Biological Description**

---

**Alternative Names**

CIC3 Antibody, CLC3 Antibody, CLCN 3 Antibody, Chloride channel 3 Antibody, Chloride channel protein 3 Antibody, Chloride channel Antibody, voltage-sensitive 3 Antibody, Chloride transporter CIC 3 Antibody, DKFZp564I0463 Antibody, H(+)/Cl(-) exchange transporter 3 Antibody, Chloride transporter CIC-3 Antibody, CIC-3 Antibody, H(+)/Cl(-) exchange transporter 3 Antibody

---

**Research Areas**

---

Cell Signaling, Ion Pumps/Transporters, Neuroscience, Pumps/Transporters

---

**Cellular Localization**

---

Cytoplasmic Vesicle, Endosome, Endosome membrane, Membrane, Secretory vesicle membrane

---

**Accession Number**

---

NP\_445815.2

---

**Gene ID**

---

84360

---

**Swiss Prot**

---

P51792

---

**Scientific Background**

---

Clcn3 mediates the exchange of chloride ions against protons, and functions as an antiporter and contributes to the acidification of the endosome and synaptic vesicle lumen, and may thereby affect vesicle trafficking and exocytosis. It may play an important role in neuronal cell function through regulation of membrane excitability by protein kinase C. It could also help neuronal cells to establish short-term memory.

---

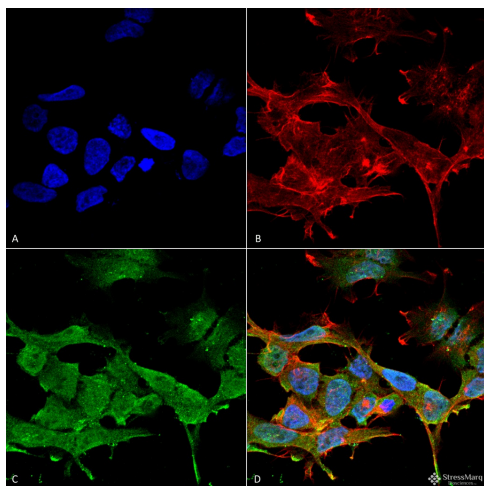
**References**

---

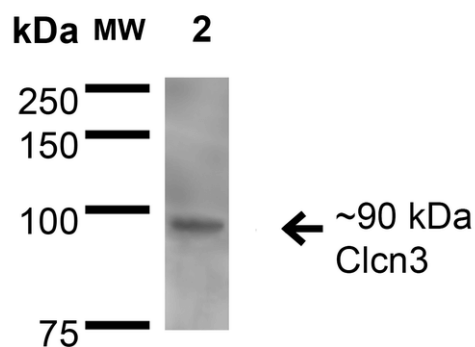
1. [www.phosphosite.org/proteinAction.do?id=5088&showAllSites=true](http://www.phosphosite.org/proteinAction.do?id=5088&showAllSites=true)

---

## Product Images



Immunocytochemistry/Immunofluorescence analysis using Mouse Anti-Clcn3 Monoclonal Antibody, Clone S258-5 (SMC-408). Tissue: Neuroblastoma cell line SK-N-BE. Species: Human. Fixation: 4% Formaldehyde for 15 min at RT. Primary Antibody: Mouse Anti-Clcn3 Monoclonal Antibody (SMC-408) at 1:100 for 60 min at RT. Secondary Antibody: Goat Anti-Mouse ATTO 488 at 1:100 for 60 min at RT. Counterstain: Phalloidin Texas Red F-Actin stain; DAPI (blue) nuclear stain at 1:1000, 1:5000 for 60min RT, 5min RT. Localization: Membrane, Endosome, Endosome membrane, Cytoplasmic Vesicle, Secretory Vesicle Membrane. Magnification: 60X. (A) DAPI (blue) nuclear stain (B) Phalloidin Texas Red F-Actin stain (C) Clcn3 Antibody (D) Composite.



Western Blot analysis of Rat Brain Membrane showing detection of ~90 kDa Clcn3 protein using Mouse Anti-Clcn3 Monoclonal Antibody, Clone S258-5 (SMC-408). Lane 1: Molecular Weight Ladder. Lane 2: Rat Brain Membrane. Load: 15  $\mu$ g. Block: 2% BSA and 2% Skim Milk in 1X TBST. Primary Antibody: Mouse Anti-Clcn3 Monoclonal Antibody (SMC-408) at 1:200 for 16 hours at 4°C. Secondary Antibody: Goat Anti-Mouse IgG: HRP at 1:1000 for 1 hour RT. Color Development: ECL solution for 6 min in RT. Predicted/Observed Size: ~90 kDa.

## Product Citations (0)

Currently there are no citations for this product.

## Reviews

There are no reviews yet.