



# SZABO SCANDIC

Part of Europa Biosite

## Produktinformation



Forschungsprodukte & Biochemikalien



Zellkultur & Verbrauchsmaterial



Diagnostik & molekulare Diagnostik



Laborgeräte & Service

Weitere Information auf den folgenden Seiten!  
See the following pages for more information!



### Lieferung & Zahlungsart

siehe unsere [Liefer- und Versandbedingungen](#)

### Zuschläge

- Mindermengenzuschlag
- Trockeneiszuschlag
- Gefahrgutzuschlag
- Expressversand

### SZABO-SCANDIC HandelsgmbH

Quellenstraße 110, A-1100 Wien

T. +43(0)1 489 3961-0

F. +43(0)1 489 3961-7

[mail@szabo-scandic.com](mailto:mail@szabo-scandic.com)

[www.szabo-scandic.com](http://www.szabo-scandic.com)

[linkedin.com/company/szaboscandic](https://www.linkedin.com/company/szaboscandic) 

## Otophyllaside L

## Chemical Properties

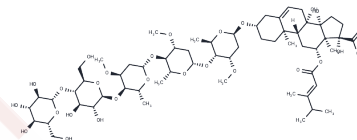
CAS No. : 1015447-52-5

Formula: C61H98O26

Molecular Weight: 1247.42

Appearance: no data available

Storage: Powder: -20°C for 3 years | In solvent: -80°C for 1 year



## Biological Description

Description	Otophyllaside L, a glycoside isolated from the roots of <i>Cynanchum otophyllum</i> , is utilized in the study of epilepsy.
-------------	---

## Preparing Stock Solutions

	1mg	5mg	10mg
1 mM	0.8017 mL	4.0083 mL	8.0165 mL
5 mM	0.1603 mL	0.8017 mL	1.6033 mL
10 mM	0.0802 mL	0.4008 mL	0.8017 mL
50 mM	0.016 mL	0.0802 mL	0.1603 mL

Please select the appropriate solvent to prepare the stock solution, according to the solubility of the product in different solvents. Please use it as soon as possible.

Inhibitor · Natural Compounds · Compound Libraries · Recombinant Proteins

This product is for Research Use Only · Not for Human or Veterinary or Therapeutic Use

Tel: 781-999-4286

E\_mail: info@targetmol.com

Address: 36 Washington Street, Wellesley Hills, MA 02481