



SZABO SCANDIC

Part of Europa Biosite

Produktinformation



Forschungsprodukte & Biochemikalien



Zellkultur & Verbrauchsmaterial



Diagnostik & molekulare Diagnostik



Laborgeräte & Service

Weitere Information auf den folgenden Seiten!
See the following pages for more information!



Lieferung & Zahlungsart

siehe unsere [Liefer- und Versandbedingungen](#)

Zuschläge

- Mindermengenzuschlag
- Trockeneiszuschlag
- Gefahrgutzuschlag
- Expressversand

SZABO-SCANDIC HandelsgmbH

Quellenstraße 110, A-1100 Wien

T. +43(0)1 489 3961-0

F. +43(0)1 489 3961-7

mail@szabo-scandic.com

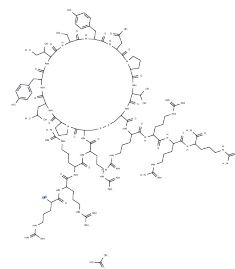
www.szabo-scandic.com

[linkedin.com/company/szaboscandic](https://www.linkedin.com/company/szaboscandic) 

KRPEP-2D acetate

Chemical Properties

CAS No. :	
Formula:	C110H186N44O27S2
Molecular Weight:	2621.06
Appearance:	no data available
Storage:	keep away from moisture Powder: -20°C for 3 years In solvent: -80°C for 1 year



Biological Description

Description	KRPEP-2D acetate was identified as a K-Ras(G12D) selective inhibitory peptide against the G12D mutant of K-Ras, which is a key member of the Ras protein family and an attractive cancer therapeutic target.
Targets(IC50)	Raf
In vitro	KRpep-2d exhibits potent non-covalent K-Ras(G12D) inhibitory activity, with selectivity against wild-type (WT) K-Ras and the K-Ras(G12C) mutant, in both cell-free enzyme (IC50 = 1.6 nM) and cell-based assays.

Preparing Stock Solutions

	1mg	5mg	10mg
1 mM	0.3815 mL	1.9076 mL	3.8153 mL
5 mM	0.0763 mL	0.3815 mL	0.7631 mL
10 mM	0.0382 mL	0.1908 mL	0.3815 mL
50 mM	0.0076 mL	0.0382 mL	0.0763 mL

Please select the appropriate solvent to prepare the stock solution, according to the solubility of the product in different solvents. Please use it as soon as possible.

Reference

Sakamoto K, Kamada Y, Sameshima T, et al. K-Ras (G12D)-selective inhibitory peptides generated by random peptide T7 phage display technology[J]. Biochemical and biophysical research communications, 2017, 484(3): 605-

Inhibitor · Natural Compounds · Compound Libraries · Recombinant Proteins

This product is for Research Use Only · Not for Human or Veterinary or Therapeutic Use

Tel:781-999-4286 E_mail:info@targetmol.com Address:36 Washington Street,Wellesley Hills,MA 02481