



# SZABO SCANDIC

Part of Europa Biosite

## Produktinformation



Forschungsprodukte & Biochemikalien



Zellkultur & Verbrauchsmaterial



Diagnostik & molekulare Diagnostik



Laborgeräte & Service

Weitere Information auf den folgenden Seiten!  
See the following pages for more information!



### Lieferung & Zahlungsart

siehe unsere [Liefer- und Versandbedingungen](#)

### Zuschläge

- Mindermengenzuschlag
- Trockeneiszuschlag
- Gefahrgutzuschlag
- Expressversand

### SZABO-SCANDIC HandelsgmbH

Quellenstraße 110, A-1100 Wien

T. +43(0)1 489 3961-0

F. +43(0)1 489 3961-7

[mail@szabo-scandic.com](mailto:mail@szabo-scandic.com)

[www.szabo-scandic.com](http://www.szabo-scandic.com)

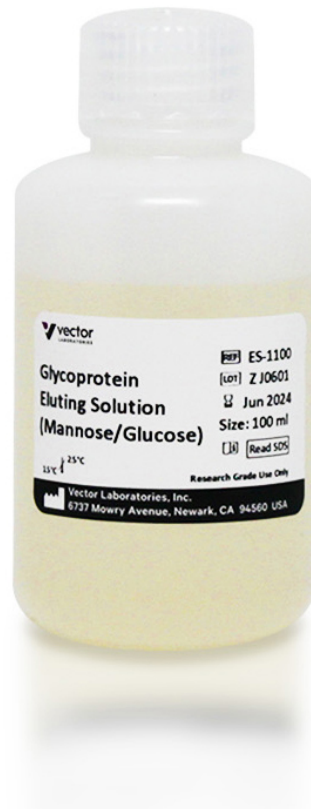
[linkedin.com/company/szaboscandic](https://www.linkedin.com/company/szaboscandic) 



# Glycoprotein Eluting Solution for Mannose/Glucose Binding Lectins

## ES-1100-100

### Product Images



## Short Description

---

Vector Laboratories has developed Glycoprotein Elution Solutions in the neutral pH range that maximize the yield of eluted glycoproteins and preserve the activity of the agarose-bound lectins for repeated use. All components of these ready-to-use Glycoprotein Eluting Solutions can be subsequently removed by dialysis. These Glycoprotein Eluting Solutions offer researchers convenience and superior recovery over standard sugar solutions.

### Features:

- Preserve the activity of the agarose-bound lectins for repeated use
- Elution in neutral pH range

## Additional Information

---

Unit Size	100 ml
Applications	Glycobiology, Affinity Chromatography
Recommended Usage	1) Wash lectin agarose column to remove unbound proteins with HEPES- or TRIS-Buffered saline (HBS, TBS), pH 7.5, until OD280nm reaches background level. 2) Apply Glycoprotein Eluting Solution and allow to flow through the column by gravity. Note: Do not apply pressure to speed elution because this may reduce the percent recovery of the bound glycoprotein. Complete elution may take up to 10 column volumes.* 3) Following elution, the agarose lectin column is ready for reuse after equilibrating with 2-4 column volumes of HBS or TBS, pH 7.5. *These results may not be typical for other glycoproteins, since oligosaccharide structures of glycoproteins vary significantly. The eluting solution has a high osmolarity. If downstream applications are adversely affected by salt, eluted glycoproteins may require dialysis or gel filtration.
Recommended Storage	Room Temperature

