



# SZABO SCANDIC

Part of Europa Biosite

## Produktinformation



Forschungsprodukte & Biochemikalien



Zellkultur & Verbrauchsmaterial



Diagnostik & molekulare Diagnostik



Laborgeräte & Service

Weitere Information auf den folgenden Seiten!  
See the following pages for more information!



### Lieferung & Zahlungsart

siehe unsere [Liefer- und Versandbedingungen](#)

### Zuschläge

- Mindermengenzuschlag
- Trockeneiszuschlag
- Gefahrgutzuschlag
- Expressversand

### SZABO-SCANDIC HandelsgmbH

Quellenstraße 110, A-1100 Wien

T. +43(0)1 489 3961-0

F. +43(0)1 489 3961-7

[mail@szabo-scandic.com](mailto:mail@szabo-scandic.com)

[www.szabo-scandic.com](http://www.szabo-scandic.com)

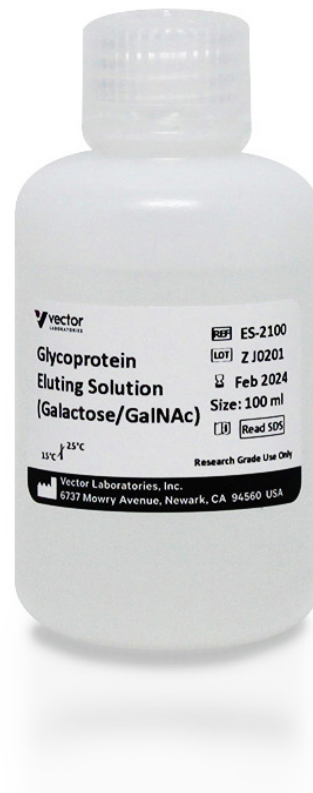
[linkedin.com/company/szaboscandic](https://www.linkedin.com/company/szaboscandic) 



# Glycoprotein Eluting Solution for Galactose/GalNAc Binding Lectins

## ES-2100-100

### Product Images



## Short Description

---

### Features:

- Convenient, ready-to-use solutions
- Superior recovery over standard sugar solutions
- Maximize the yield of eluted glycoproteins
- Preserve the activity of the agarose-bound lectins for repeated use
- Elution in neutral pH range
- All components can be subsequently removed by dialysis

### Additional Information

---

Unit Size	100 ml
Applications	Glycobiology, Affinity Chromatography
Recommended Usage	<p>1) Wash lectin agarose column to remove unbound proteins with HEPES- or TRIS-Buffered saline (HBS, TBS), pH 7.5, until OD280nm reaches background level.</p> <p>2) Apply Glycoprotein Eluting Solution and allow to flow through the column by gravity. Note: Do not apply pressure to speed elution because this may reduce the percent recovery of the bound glycoprotein. Complete elution may take up to 10 column volumes.*</p> <p>3) Following elution, the agarose lectin column is ready for reuse after equilibrating with 2-4 column volumes of HBS or TBS, pH 7.5. *These results may not be typical for other glycoproteins, since oligosaccharide structures of glycoproteins vary significantly. The eluting solution has a high osmolarity. If downstream applications are adversely affected by salt, eluted glycoproteins may require dialysis or gel filtration.</p>
Recommended Storage	Room Temperature

