



# SZABO SCANDIC

Part of Europa Biosite

## Produktinformation



Forschungsprodukte & Biochemikalien



Zellkultur & Verbrauchsmaterial



Diagnostik & molekulare Diagnostik



Laborgeräte & Service

Weitere Information auf den folgenden Seiten!  
See the following pages for more information!



### Lieferung & Zahlungsart

siehe unsere [Liefer- und Versandbedingungen](#)

### Zuschläge

- Mindermengenzuschlag
- Trockeneiszuschlag
- Gefahrgutzuschlag
- Expressversand

### SZABO-SCANDIC HandelsgmbH

Quellenstraße 110, A-1100 Wien

T. +43(0)1 489 3961-0

F. +43(0)1 489 3961-7

[mail@szabo-scandic.com](mailto:mail@szabo-scandic.com)

[www.szabo-scandic.com](http://www.szabo-scandic.com)

[linkedin.com/company/szaboscandic](https://www.linkedin.com/company/szaboscandic) 

# ImmPACT® Vector® Red

## Alkaline Phosphatase Substrate

<b>Cat. No.</b>	<b>SK-5105</b>
<b>Storage</b>	Store reagents in original bottles at 2-8 °C. Avoid storing reagents or working solution in strong direct light.
<b>Description</b>	This kit contains all of the reagents necessary to prepare a working solution. The ImmPACT Vector Red Substrate produces a red reaction product in the presence of alkaline phosphatase (AP) enzyme. This reaction product is also highly fluorescent and non-fading and can be viewed with Texas Red™ or rhodamine filter systems.

### Components

Product Name	Volume
ImmPACT Vector Red Diluent	120 ml
ImmPACT Vector Red Reagent 1	2.5 ml
ImmPACT Vector Red Reagent 2	2.5 ml

### Preparation of Substrate Working Solution

To 5 ml ImmPACT Vector Red Diluent:

- Add 2 drops (≈ 80 µl\*) of ImmPACT Vector Red Reagent 1
- Add 2 drops (≈ 60 µl†) of ImmPACT Vector Red Reagent 2†

Mix well before use. Use immediately.

\*Drop volumes differ due to solvent compositions.

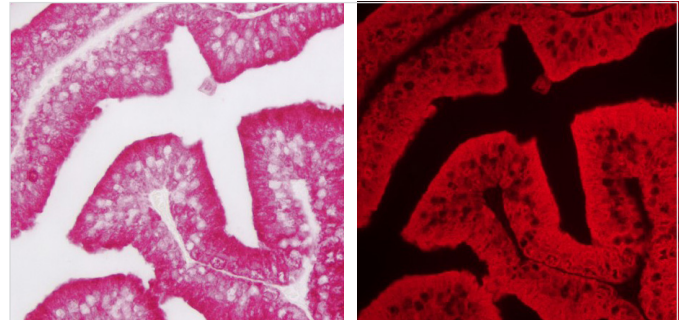
† For blots do not add Reagent 2.

**IMPORTANT:** Little is known about the toxicity and carcinogenicity of the substrate kit components. Appropriate care should be exercised when using this reagent including gloves, eye protection, lab coats, and good laboratory procedures. Dispose in accordance with local regulations.

### Instructions for Use

After incubation with an AP detection system, rinse sections in buffers. Incubate with the substrate working solution for 20–30 minutes. Optimal development times should be determined by the investigator. Improved staining may be obtained by developing the substrate in the dark.

Wash slides in buffer for 5 minutes. Rinse in water and counterstain, if desired.



*Prostate: Anti-PSA (m) detected with ImmPRESS® -AP Anti-Mouse IgG Reagent and ImmPACT Vector Red Alkaline Phosphatase Substrate. Viewed under brightfield and fluorescence microscopy.*

For permanent, non-aqueous mounting: Dehydrate, clear, and coverslip using a non-aqueous mounting media, such as VectaMount® Mounting Medium (H-5000) or VectaMount® Express Mounting Medium (H-5700).

For aqueous mounting: Coverslip using an aqueous mounting media such as VectaMount® AQ Mounting Medium (H-5501) or a VECTASHIELD® Antifade Mounting Medium. To increase the intensity of ImmPACT Vector Red fluorescence, rinse slides 2-5 minutes in 100% ethanol before mounting.

Detailed product listings, specifications, protocols and additional information is available on our website: [vectorlabs.com](http://vectorlabs.com)