



SZABO SCANDIC

Part of Europa Biosite

Produktinformation



Forschungsprodukte & Biochemikalien



Zellkultur & Verbrauchsmaterial



Diagnostik & molekulare Diagnostik



Laborgeräte & Service

Weitere Information auf den folgenden Seiten!
See the following pages for more information!



Lieferung & Zahlungsart

siehe unsere [Liefer- und Versandbedingungen](#)

Zuschläge

- Mindermengenzuschlag
- Trockeneiszuschlag
- Gefahrgutzuschlag
- Expressversand

SZABO-SCANDIC HandelsgmbH

Quellenstraße 110, A-1100 Wien

T. +43(0)1 489 3961-0

F. +43(0)1 489 3961-7

mail@szabo-scandic.com

www.szabo-scandic.com

[linkedin.com/company/szaboscandic](https://www.linkedin.com/company/szaboscandic) 

Vector® Black

Alkaline Phosphatase Substrate

Cat. No.	SK-5200
Storage	Store reagents in original bottles at 2-8 °C. Avoid storing reagents or working solution in strong direct light.
Description	This kit contains all of the reagents necessary to prepare the substrate working solution. Vector Black Substrate produces a brown-black reaction product in the presence of alkaline phosphatase (AP) enzyme.

Components

Product Name	Volume
Vector Black Reagent 1	4 ml
Vector Black Reagent 2	4 ml
Vector Black Reagent 3	3 ml

Preparation of Substrate Working Solution

To 5 ml of 100 mM Tris-HCl, pH 9.5 buffer*:

- Add 2 drops (≈ 80 μl†) of Vector Black Reagent 1
- Add 2 drops (≈ 84 μl†) of Vector Black Reagent 2
- Add 2 drops (≈ 40 μl†) of Vector Black Reagent 3

Mix well before use. Use immediately.

* 0.1% Tween® 20 in the Vector Black working solution is recommended for use with antigen retrieved tissues.

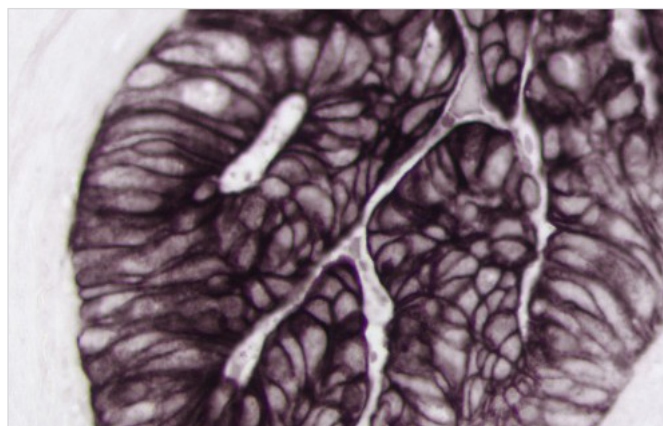
† Drop volumes differ due to solvent compositions.

IMPORTANT: Little is known about the toxicity and carcinogenicity of the substrate kit components. Appropriate care should be exercised when using this reagent including gloves, eye protection, lab coats, and good laboratory procedures. Dispose in accordance with local regulations.

Instructions for Use

After incubation with an AP detection system, rinse sections in buffer. Incubate with the substrate working solution for 20–30 minutes. Optimal development times should be determined by the investigator. Improved staining may be obtained by developing the substrate in the dark.

Wash slides with buffer for 5 minutes. Rinse in water and counterstain, if desired.



Colon Carcinoma: Pan-Cytokeratin (m) detected with VECTASTAIN® ABC-AP Kit and Vector Black Substrate (brown-black). No Counterstain.

For permanent, non-aqueous mounting: Dehydrate, clear, and coverslip using a non-aqueous mounting media, such as VectaMount® Mounting Medium (H-5000) or VectaMount® Express Mounting Medium (H-5700).

Notes

1. Vector Black reaction product should appear brown/black. Bluish staining indicates that the concentration of the primary antibody is too high and should be decreased.
2. Prolonged incubation in the substrate working solution can increase background toning in tissue sections.

Detailed product listings, specifications, protocols and additional information is available on our website: vectorlabs.com