



# FIX&PERM® Cell Fixation and Permeabilization Kit

FIX&PERM® is a simple flow cytometry cell preparation procedure making use of two reagents. Reagent A gently fixes cells, while Reagent B permeabilizes them. FIX&PERM® is optimized to reduce background and allows for the simultaneous addition of permeabilization medium and fluorochrome-labeled antibodies, enabling the staining of both membrane proteins and intracellular components.



## Kit Highlights

- Mildly fixes cells, preserving their flow cytometric scatter characteristics
- Allows simultaneous characterization of both intracellular and cell surface markers
- Rapid technique – whole procedure can be carried out in less than one hour, ready for immediate analysis or storage for 24 hours
- Proven technology – initially characterized in Knapp et al. in 1994 and cited in hundreds of peer-reviewed publications since
- Stringent QC – the quality of each lot is confirmed using well-defined blood samples and comparison of scatter characteristics and immunostaining patterns
- Stable – no volatile organic solvents, enabling storage at ambient temperature during shipment and in laboratories
- Flexible – can be used with most monoclonal antibody conjugates, as well as our range of antibodies with optimized protocols for use with FIX&PERM®

**FIX&PERM® products can be ordered**

official distributor

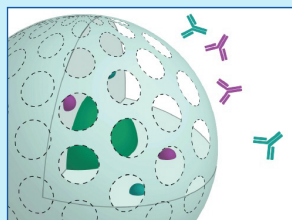
SZABO-SCANDIC HandelsgmbH  
Quellenstraße 110, A-1100 Wien  
T: +43(0)1 489 3961-0  
F: +43(0)1 489 3961-7  
mail@szabo-scandic.com  
[www.szabo-scandic.com](http://www.szabo-scandic.com)



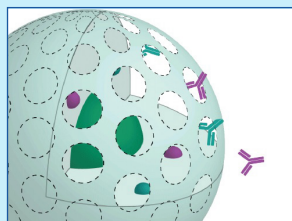
**SZABO  
SCANDIC**



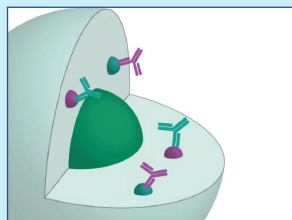
Reagent A gently fixes cells, preserving their forward and side-scatter characteristics



Reagent B and labeled antibodies are added



Reagent B permeabilizes the cell



Allows binding and detection of intracellular antigens



## FIX&PERM® Catalog Numbers

Product	Size	Cat. Number
FIX&PERM® Kit	2 x 20 ml	GAS-002
FIX&PERM® 1000 Kit	2 x 100 ml	GAS-002-1
Fix&PERM® Reagent A (Fix)	1 x 100 ml	GAS-002A-1
Fix&PERM® Reagent B (Perm)	1 x 100 ml	GAS-002B-1
Fix&PERM® Sample Kit	2 x 5 ml	GAS-002M

**CE/IVD registered kits are available for European customers in clinical laboratory settings. Contact us to order.**

## Related Reagents

We offer mouse anti-human conjugated (PE/FITC) monoclonal antibodies optimized for use with FIX&PERM® kits, as well as Combi panels for dual immunostaining protocols.

### Antibody Antigens:

- CD3
- CD22
- CD68
- IFN-gamma
- IL-1 beta
- Lactoferrin
- MPO-C2
- Lysozyme

### Mouse anti-Human Combi Products:

- IgG Negative Control (FITC) & IgG Negative Control (PE)
- Anti-Myeloperoxidase-C2 (FITC) & anti-Lactoferrin (PE)
- Anti-Lysozyme (FITC) & anti-Lactoferrin (PE)
- Anti-Myeloperoxidase-C2 (FITC) & anti-CD3 (PE)
- Anti-Myeloperoxidase-C2 (FITC) & anti-CD22 (PE)

### FIX&PERM® Procedure

For each sample to be analyzed, use 50 µl of whole blood, bone marrow or mononuclear cell suspension in a 5 ml tube.

1. Add 100 µl of Reagent A (fixation medium, stored and used at room temperature)
2. Incubate for 15 minutes at room temperature
3. Add 5 ml phosphate buffered saline and centrifuge cells for 5 minutes at 300 g
4. Remove supernatant and add to cell pellet 100 µl Reagent B (permeabilization medium) and 20 µl monoclonal antibody conjugate
5. Vortex at low speed for 1-2 seconds
6. Incubate for 15 minutes at room temperature
7. Wash cells with PBS as described above
8. Remove supernatant and resuspend cells in sheath fluid for immediate analysis or resuspend cells in 0.5 ml 1.0 % formaldehyde and store at 2-8°C in the dark
9. Analyze fixed cells within 24 hours

## About Absolute Biotech

Absolute Biotech is a new company that unites multiple life science brands into one organization specializing in antibody reagents and services. To learn more, please visit [www.absolutebiotech.com](http://www.absolutebiotech.com).