

# INTRODUCING

SANTA CRUZ BIOTECHNOLOGY

# IMMUNOCRUZ® ANTIBODY CONJUGATES

Over **8,300** monoclonal primary antibodies available in **10** popular conjugate forms for direct detection and use, eliminating the need for secondary reagents. Our new Alexa Fluor® Direct Conjugates allow for simultaneous detection of multiple target proteins in one experiment, producing signals with better dynamic range and more stability than conventional enzymatic detection methods.

VISIBLE LIGHT

INFRARED

400 nm

450 nm

500 nm

550 nm

600 nm

650 nm

700 nm

750 nm

800 nm

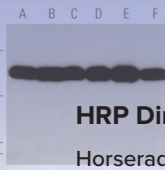
850 nm

### Alexa Fluor® Direct Conjugates for RGB Fluorescent Imaging Systems

Dyes in the Visible Light Spectrum are suitable for use with imaging systems like iBright™ FL1000, FluorChem™, Typhoon, Azure and other comparable systems.

- Alexa Fluor® 488 | 525 nm Emission
- Alexa Fluor® 546 | 573 nm Emission
- Alexa Fluor® 594 | 617 nm Emission
- Alexa Fluor® 647 | 665 nm Emission

WB (RGB)  
IF  
IHC  
FCM



### HRP Direct Conjugates

Horseradish Peroxidase (HRP) Antibody Conjugates for direct chemiluminescence (ECL) WB and chromogenic (DAB) IHC.

- Horseradish Peroxidase (HRP)

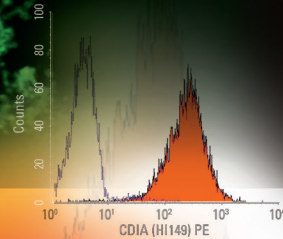
WB (ECL)  
IHC  
ELISA

### PE & FITC Direct Conjugates

Conventional, Fluorescein (FITC) and Phycoerythrin (PE) antibody conjugates for direct immunofluorescent detection.

- FITC (Fluorescein) | 525 nm Emission
- PE (Phycoerythrin) | 578 nm Emission

IF  
IHC  
FCM

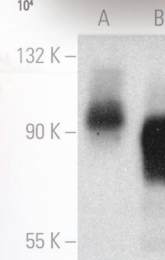


### Alexa Fluor® Direct Conjugates for Near-Infrared (NIR) Detection Systems

Dyes in the Near-Infrared Spectrum are suitable for use with detection systems like LI-COR®/Odyssey®, iBright™ FL1000, FluorChem™, Typhoon, Azure and other comparable systems.

- Alexa Fluor® 680 | 702 nm Emission
- Alexa Fluor® 790 | 814 nm Emission

WB (NIR)  
IF  
IHC  
FCM

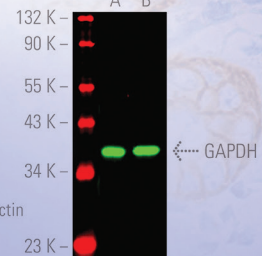
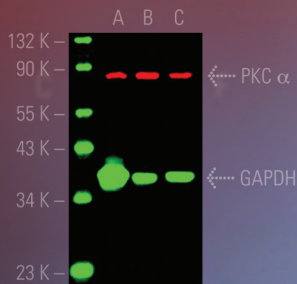


### AC Direct Conjugates

Agarose Antibody Conjugates (AC) for target protein enrichment by Immunoprecipitation (IP).

- Agarose Conjugate (AC)

IP



CruzMarker™ Molecular Weight Standards and CruzMarker™ MW Tag Antibodies available.

Alexa Fluor® is a trademark of Molecular Probes, Inc.



WWW.SCBT.COM



The Power to Question