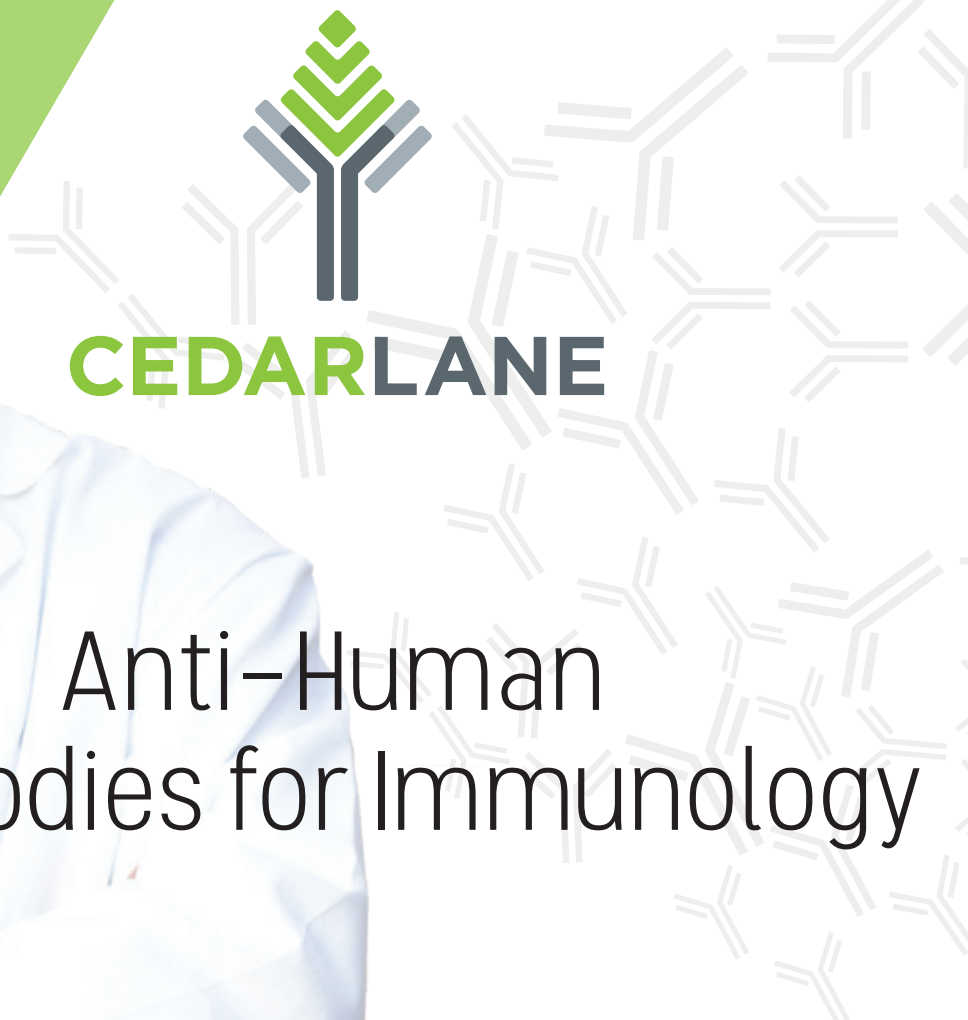
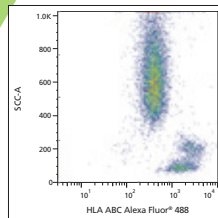
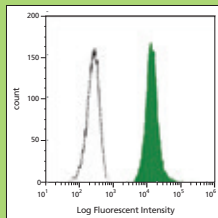
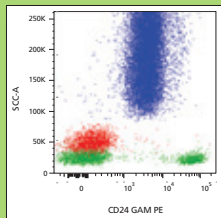


ANTI-HUMAN ANTIBODIES FOR IMMUNOLOGY FROM CEDARLANE

official distributor

SZABO-SCANDIC HandelsgmbH
Quellenstraße 110, A-1100 Wien
T. +43(0)1 489 3961-0
F. +43(0)1 489 3961-7
mail@szabo-scandic.com
www.szabo-scandic.com

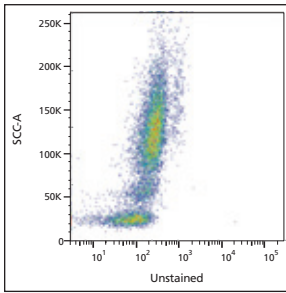


Anti-Human Antibodies for Immunology

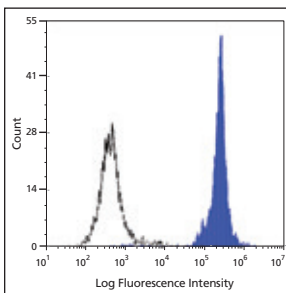
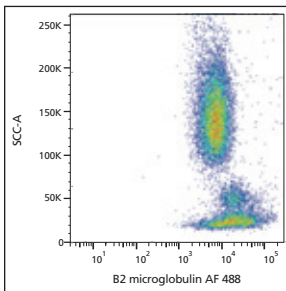
www.cedarlanelabs.com/Human

Anti-Human Antibodies for Immunology

For over 25 years CEDARLANE has provided immunology related products to the life science research and diagnostic communities. We offer an extensive range of antibodies against human specificities that are useful in a number of applications including flow cytometry. CEDARLANE has antibodies to various cell surface markers including CD and HLA molecules, receptors and complement components. These antibodies are offered in a variety of formats including purified and conjugates to biotin, FITC, PE, APC and Alexa Fluor® dyes.



Human peripheral blood stained with Alexa Fluor®488 anti-human beta 2-microglobulin, clone: YTH 470.5 (**CL7604AF4**) (below) vs. unstained control (above).



Balb/c mouse thymocytes incubated with rabbit anti-mouse T cells and then incubated with fresh human serum stained with FITC anti-human C3/C3b/iC3b, clone: 7C12 (**CL7636F**) (filled histogram) or FITC mouse IgG1 isotype control (open histogram).

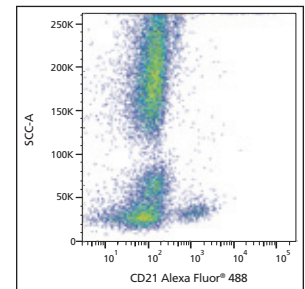
Specificity	Format	Clone	Isotype	Species Reactivity	Applications	Size	Cat. #
Beta 2-microglobulin	Purified	YTH 470.5	Rat IgG2b	Human	F, WB	200 µg	CL7604AP
	APC	YTH 470.5	Rat IgG2b	Human	F	100 µg	CL7604APC
	Biotin	YTH 470.5	Rat IgG2b	Human	F, WB	100 µg	CL7604B
	FITC	YTH 470.5	Rat IgG2b	Human	F	100 µg	CL7604F
	PE	YTH 470.5	Rat IgG2b	Human	F	50 µg	CL7604PE
	Alexa Fluor®488	YTH 470.5	Rat IgG2b	Human	F	100 µg	CL7604AF4
C3b/iC3b	Purified	3E7	Mouse IgG1	Human	Blocking alternative pathway, F, E	250 µg	CL7651AP
	Biotin	3E7	Mouse IgG1	Human	F, E	100 µg	CL7651B
	FITC	3E7	Mouse IgG1	Human	F	100 µg	CL7651F
	PE	3E7	Mouse IgG1	Human	F	50 µg	CL7651PE
	APC	3E7	Mouse IgG1	Human	F	100 µg	CL7651APC
	Purified	5G9	Mouse IgG2a	Human	Blocking classical pathway, F, E	250 µg	CL7652AP
C3/C3b/iC3b	Biotin	5G9	Mouse IgG2a	Human	F, E	100 µg	CL7652B
	FITC	5G9	Mouse IgG2a	Human	F	100 µg	CL7652F
	PE	5G9	Mouse IgG2a	Human	F	50 µg	CL7652PE
	APC	5G9	Mouse IgG2a	Human	F	100 µg	CL7652APC
	Purified	6C9	Mouse IgG1	Human/Mouse	F, E	250 µg	CL7631AP
	APC	6C9	Mouse IgG1	Human/Mouse	F	100 µg	CL7631APC
C3/C3b/iC3b/C3dg	Biotin	6C9	Mouse IgG1	Human/Mouse	F, E	100 µg	CL7631B
	FITC	6C9	Mouse IgG1	Human/Mouse	F, E	100 µg	CL7631F
	PE	6C9	Mouse IgG1	Human/Mouse	F, E	50 µg	CL7631PE
	Purified	7C12	Mouse IgG1	Human	WB, F, E	250 µg	CL7636AP
	Biotin	7C12	Mouse IgG1	Human	WB, F, E	100 µg	CL7636B
	FITC	7C12	Mouse IgG1	Human	F	100 µg	CL7636F
Calgranulin A	PE	7C12	Mouse IgG1	Human	F	50 µg	CL7636PE
	Purified	1H8	Mouse IgG2a	Human	WB, F, E	250 µg	CL7637AP
	APC	1H8	Mouse IgG2a	Human	F	100 µg	CL7637APC
	Biotin	1H8	Mouse IgG2a	Human	WB, F, E	100 µg	CL7637B
Calgranulin B	FITC	1H8	Mouse IgG2a	Human	F	100 µg	CL7637F
	PE	1H8	Mouse IgG2a	Human	F	50 µg	CL7637PE
	Purified	CF-145	Mouse IgG2b	Human	F	200 µg	CL2711AP
	Biotin	CF-145	Mouse IgG2b	Human	F	100 µg	CL2711B
CD3	FITC	CF-145	Mouse IgG2b	Human	F	100 µg	CL2711F
	Purified	CF-557	Mouse IgG1	Human	F	200 µg	CL2712AP
	Biotin	CF-557	Mouse IgG1	Human	F	100 µg	CL2712B
	PE	CF-557	Mouse IgG1	Human	F	50 µg	CL2712PE
CD350APC	APC	UCHT1	Mouse IgG1	Human	F	0.1 mg	CLX350APC
	FITC	UCHT1	Mouse IgG1	Human	F, C	100 tests	CLX350F
	Low Endotoxin	UCHT1	Mouse IgG1	Human	FN	100 tests	CLX350LE
	PE	UCHT1	Mouse IgG1	Human	F	100 tests	CLX350PE
	PerCP	UCHT1	Mouse IgG1	Human	F	100 tests	CLX350PCP

Specificity	Format	Clone	Isotype	Species Reactivity	Applications	Size	Cat. #
CD4	Purified	MEM-241	Mouse IgG1	Human	F, WB	0.1 mg	CLX06AP
	APC	MEM-241	Mouse IgG1	Human	F	0.1 mg	CLX06APC
	Biotin	MEM-241	Mouse IgG1	Human	F, WB	0.1 mg	CLX06B
	FITC	MEM-241	Mouse IgG1	Human	F	100 tests	CLX06F
	PE	MEM-241	Mouse IgG1	Human	F	100 tests	CLX06PE
	PerCP	MEM-241	Mouse IgG1	Human	F	100 tests	CLX06PCP
CD8	Purified	MEM-31	Mouse IgG2a	Human	F, IP	0.1 mg	CLX10AP
	APC	MEM-31	Mouse IgG2a	Human	F	0.1 mg	CLX10APC
	Biotin	MEM-31	Mouse IgG2a	Human	F, IP	0.1 mg	CLX10B
	FITC	MEM-31	Mouse IgG2a	Human	F	100 tests	CLX10F
	PE	MEM-31	Mouse IgG2a	Human	F	100 tests	CLX10PE
	PerCP	MEM-31	Mouse IgG2a	Human	F	100 tests	CLX10PCP
CD11a (LFA-1 alpha)	Purified	38	Mouse IgG2a	Human	F, C, IF, IP, FN	250 µg	CL7663AP
	Biotin	38	Mouse IgG2a	Human	F, C, IF, IP	100 µg	CL7663B
	FITC	38	Mouse IgG2a	Human	F, C, IF	100 µg	CL7663F
	PE	38	Mouse IgG2a	Human	F	50 µg	CL7663PE
	APC	38	Mouse IgG2a	Human	F	100 µg	CL7663APC
	Alexa Fluor®488	38	Mouse IgG2a	Human	F, C, IF	100 µg	CL7663AF4
CD11b (Mac-1; Ly 40; CR3a)	Purified	M1/70.15	Rat IgG2b	Human/Mouse	F, C, P, IP, WB, FN	250 µg	CL8941AP
	APC	M1/70.15	Rat IgG2b	Human/Mouse	F	100 µg	CL8941APC
	Biotin	M1/70.15	Rat IgG2b	Human/Mouse	F, C, P	100 µg	CL8941B
	FITC	M1/70.15	Rat IgG2b	Human/Mouse	F, IF	100 µg	CL8941F
	PE	M1/70.15	Rat IgG2b	Human/Mouse	F	50 µg	CL8941PE
	PE-Cy5	M1/70.15	Rat IgG2b	Human/Mouse	F	100 µg	CL8941TC
	Alexa Fluor®488	M1/70.15	Rat IgG2b	Human/Mouse	F, C, P	100 µg	CL8941AF4
	Alexa Fluor®647	M1/70.15	Rat IgG2b	Human/Mouse	F, C, P	100 µg	CL8941AF6
	Alexa Fluor®700	M1/70.15	Rat IgG2b	Human/Mouse	F, C, P	100 µg	CL8941AF7
	CD14	APC	MEM-15	Mouse IgG1	Human	F	100 tests
Biotin		MEM-15	Mouse IgG1	Human	F, IP	0.1 mg	CLX20B
Purified		MEM-15	Mouse IgG1	Human	F, IP	0.1 mg	CLX20AP
FITC		MEM-15	Mouse IgG1	Human	F	100 tests	CLX20F
PE		MEM-15	Mouse IgG1	Human	F	100 tests	CLX20PE
PerCP		MEM-15	Mouse IgG1	Human	F	100 tests	CLX20PCP
CD19	Purified	LT19	Mouse IgG1	Human	F, IP	0.1 mg	CLX29AP
	APC	LT19	Mouse IgG1	Human	F	0.1 mg	CLX29APC
	Biotin	LT19	Mouse IgG1	Human	F, IP	0.1 mg	CLX29B
	FITC	LT19	Mouse IgG1	Human	F	100 tests	CLX29F
	PE	LT19	Mouse IgG1	Human	F	100 tests	CLX29PE
	PerCP	LT19	Mouse IgG1	Human	F	100 tests	CLX29PCP
CD20	Purified	LT20	Mouse IgG2a	Human	F	0.1 mg	CLX31AP
	APC	LT20	Mouse IgG2a	Human	F	0.1 mg	CLX31APC
	Biotin	LT20	Mouse IgG2a	Human	F	0.1 mg	CLX31B
	FITC	LT20	Mouse IgG2a	Human	F	100 tests	CLX31F
CD21	Purified	21A/5	Mouse IgG1	Human	F, C	200 µg	CL7613AP
	APC	21A/5	Mouse IgG1	Human	F	100 µg	CL7613APC
	Biotin	21A/5	Mouse IgG1	Human	F, C	100 µg	CL7613B
	FITC	21A/5	Mouse IgG1	Human	F, C	100 µg	CL7613F
	PE	21A/5	Mouse IgG1	Human	F	50 µg	CL7613PE
	Alexa Fluor®488	21A/5	Mouse IgG1	Human	F, C	100 µg	CL7613AF4
Alexa Fluor®647	21A/5	Mouse IgG1	Human	F, C	100 µg	CL7613AF6	
CD22	Purified	BU59	Mouse IgG1	Human	F, IHC, IP	250 µg	CL7626AP
	Biotin	BU59	Mouse IgG1	Human	F, IHC, IP	100 µg	CL7626B
	FITC	BU59	Mouse IgG1	Human	F, IHC	100 µg	CL7626F
	PE	BU59	Mouse IgG1	Human	F, IHC	50 µg	CL7626PE
	Alexa Fluor®488	BU59	Mouse IgG1	Human	F, IHC	100 µg	CL7626AF4

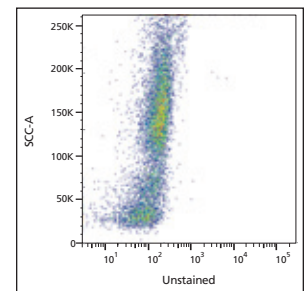
Please inquire about additional formats/sizes and azide free products.

Legend for Applications:

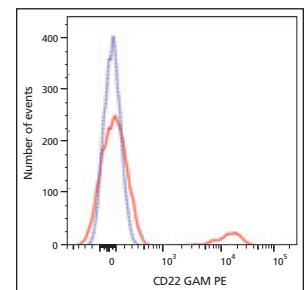
AC =Affinity Chromatography
C =Cryostat Sections
CT =Cytotoxicity Assay
E =ELISA
F =Flow Cytometry
FN =Functional Assay
IC =Immunocytochemistry
IF =Immunofluorescence
IHC =Immunohistochemistry
IP =Immunoprecipitation
IV =*In vivo* Assay
P =Paraffin-Embedded Sections
WB =Western Blotting



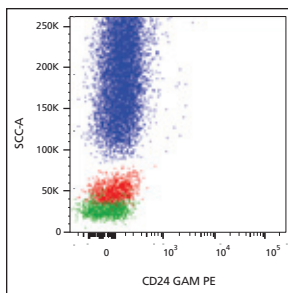
Human peripheral blood stained with Alexa Fluor®488 anti-human CD21, clone: 21A/5 (**CL7613AF4**) (above) vs. unstained control (below).



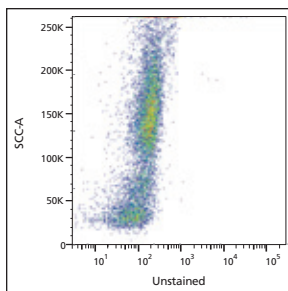
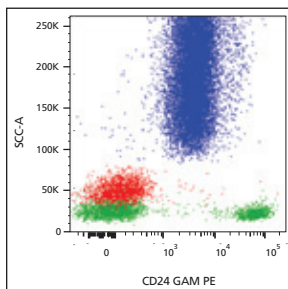
Human peripheral blood lymphocytes stained with purified anti-human CD22, clone: BU59 (**CL7626AP**) (red histogram) vs. unstained control (blue histogram).



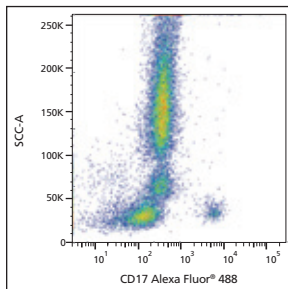
Human peripheral blood lymphocytes stained with purified anti-human CD22, clone: BU59 (**CL7626AP**) (red histogram) vs. unstained control (blue histogram). Goat anti-mouse IgG PE was used as the secondary antibody.



Human peripheral blood stained with purified anti-human CD24, clone: SN3 (**CL7668AP**) (below) vs. secondary alone control (above). Goat anti-mouse IgG PE was used as the secondary antibody.



Human peripheral blood stained with Alexa Fluor[®]488 anti-human CD37, clone: MB-1 (**CL7657AF4**) (below) vs. unstained control (above).



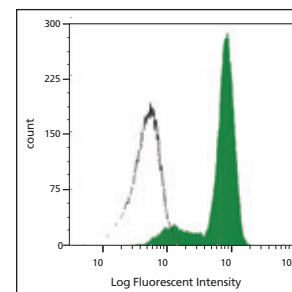
Specificity	Format	Clone	Isotype	Species Reactivity	Applications	Size	Cat. #
CD24	Purified	SN3	Mouse IgG1, κ	Human	F, WB, IF, IC, C, IP	250 µg	CL7668AP
	Low Endotoxin	SN3	Mouse IgG1, κ	Human	F, WB, IF, IC, C, IP	500 µg	CL7668LE
	Biotin	SN3	Mouse IgG1, κ	Human	F, WB, IF, IC, C, IP	100 µg	CL7668B
	FITC	SN3	Mouse IgG1, κ	Human	F, IF, IC, C	100 µg	CL7668F
	PE	SN3	Mouse IgG1, κ	Human	F	50 µg	CL7668PE
	APC	SN3	Mouse IgG1, κ	Human	F	100 µg	CL7668APC
CD25 (IL-2Ra)	Alexa Fluor [®] 488	SN3	Mouse IgG1, κ	Human	F, IF, IC, C	100 µg	CL7668AF4
	Purified	YTH 906.9HL	Rat IgG2b	Human	F, WB	200 µg	CL7603AP
	APC	YTH 906.9HL	Rat IgG2b	Human	F	100 µg	CL7603APC
	Biotin	YTH 906.9HL	Rat IgG2b	Human	F, WB	100 µg	CL7603B
	FITC	YTH 906.9HL	Rat IgG2b	Human	F	100 µg	CL7603F
	PE	YTH 906.9HL	Rat IgG2b	Human	F	50 µg	CL7603PE
CD31 (PECAM-1)	Alexa Fluor [®] 488	YTH 906.9HL	Rat IgG2b	Human	F	100 µg	CL7603AF4
	Purified	MEM-05	Mouse IgG1	Human	F, WB	0.1 mg	CLX39AP
	APC	MEM-05	Mouse IgG1	Human	F	100 tests	CLX39APC
	Biotin	MEM-05	Mouse IgG1	Human	F, WB	0.1 mg	CLX39B
	FITC	MEM-05	Mouse IgG1	Human	F	100 tests	CLX39F
	PE	MEM-05	Mouse IgG1	Human	F	100 tests	CLX39PE
CD33	Purified	CD33 1C7/1	Mouse IgG1	Human	WB, F, E	200 µg	CL7627AP
	Biotin	CD33 1C7/1	Mouse IgG1	Human	WB, F, E	100 µg	CL7627B
	FITC	CD33 1C7/1	Mouse IgG1	Human	F	100 µg	CL7627F
	PE	CD33 1C7/1	Mouse IgG1	Human	F	50 µg	CL7627PE
	Alexa Fluor [®] 488	CD33 1C7/1	Mouse IgG1	Human	F	100 µg	CL7627AF4
	Alexa Fluor [®] 647	CD33 1C7/1	Mouse IgG1	Human	F	100 µg	CL7627AF6
	Alexa Fluor [®] 700	CD33 1C7/1	Mouse IgG1	Human	F	100 µg	CL7627AF7
	CD35	Purified	To5	Mouse IgG1	Human	WB, F, C	200 µg
APC		To5	Mouse IgG1	Human	F	100 µg	CL7614APC
Biotin		To5	Mouse IgG1	Human	WB, F, C	100 µg	CL7614B
FITC		To5	Mouse IgG1	Human	F, C	100 µg	CL7614F
PE		To5	Mouse IgG1	Human	F	50 µg	CL7614PE
Alexa Fluor [®] 488		To5	Mouse IgG1	Human	F, C, P	100 µg	CL7614AF4
CD37	Purified	MB-1	Mouse IgG1	Human	F, C, WB, IP, IV	250 µg	CL7657AP
	Biotin	MB-1	Mouse IgG1	Human	F, C, WB, IP, IV	100 µg	CL7657B
	FITC	MB-1	Mouse IgG1	Human	F, C	100 µg	CL7657F
	PE	MB-1	Mouse IgG1	Human	F, C	50 µg	CL7657PE
	APC	MB-1	Mouse IgG1	Human	F, C	100 µg	CL7657APC
	Alexa Fluor [®] 488	MB-1	Mouse IgG1	Human	F, C	100 µg	CL7657AF4
CD44	Alexa Fluor [®] 647	MB-1	Mouse IgG1	Human	F, C	100 µg	CL7657AF6
	Purified	BU75	Mouse IgG2a	Human	F, FN, IHC, IF, IP, WB	250 µg	CL7665AP
	Biotin	BU75	Mouse IgG2a	Human	F, IHC, IF, IP, WB	100 µg	CL7665B
	FITC	BU75	Mouse IgG2a	Human	F, IHC, IF, WB	100 µg	CL7665F
	PE	BU75	Mouse IgG2a	Human	F	50 µg	CL7665PE
	APC	BU75	Mouse IgG2a	Human	F	100 µg	CL7665APC
CD45 (T200)	Purified	YAML 501.4	Rat IgG2a	Human	F, WB	200 µg	CL7605AP
	APC	YAML 501.4	Rat IgG2a	Human	F	100 µg	CL7605APC
	Biotin	YAML 501.4	Rat IgG2a	Human	F, WB	100 µg	CL7605B
	FITC	YAML 501.4	Rat IgG2a	Human	F	100 µg	CL7605F
	PE	YAML 501.4	Rat IgG2a	Human	F	50 µg	CL7605PE
	Alexa Fluor [®] 488	YAML 501.4	Rat IgG2a	Human	F	100 µg	CL7605AF4
	Alexa Fluor [®] 647	YAML 501.4	Rat IgG2a	Human	F	100 µg	CL7605AF6
	Alexa Fluor [®] 700	YAML 501.4	Rat IgG2a	Human	F	100 µg	CL7605AF7

Specificity	Format	Clone	Isotype	Species Reactivity	Applications	Size	Cat. #
CD45R	Purified	YTH 80.103	Rat IgG2b	Human	F, WB	200 µg	CL7606AP
	APC	YTH 80.103	Rat IgG2b	Human	F	100 µg	CL7606APC
	Biotin	YTH 80.103	Rat IgG2b	Human	F, WB	100 µg	CL7606B
	FITC	YTH 80.103	Rat IgG2b	Human	F	100 µg	CL7606F
	PE	YTH 80.103	Rat IgG2b	Human	F	50 µg	CL7606PE
	Alexa Fluor®488	YTH 80.103	Rat IgG2b	Human	F	100 µg	CL7606AF4
CD45R (Ly 5, B220)	Purified	RA3-6B2	Rat IgG2a	Human/Mouse	F	100 µg	CL8990AP
	APC	RA3-6B2	Rat IgG2a	Human/Mouse	F	100 µg	CL8990APC
	Biotin	RA3-6B2	Rat IgG2a	Human/Mouse	F	100 µg	CL8990B
	FITC	RA3-6B2	Rat IgG2a	Human/Mouse	F	100 µg	CL8990F
	PE	RA3-6B2	Rat IgG2a	Human/Mouse	F	100 µg	CL8990PE
	APC	RA3-6B2	Rat IgG2a	Human/Mouse	F	100 µg	CL8990APC
CD55 (DAF)	Purified	67	Mouse IgG1	Human	F, C, IF, WB	250 µg	CL7655AP
	Biotin	67	Mouse IgG1	Human	F, C, IF, WB	100 µg	CL7655B
	FITC	67	Mouse IgG1	Human	F, C, IF, WB	100 µg	CL7655F
	PE	67	Mouse IgG1	Human	F	50 µg	CL7655PE
	APC	67	Mouse IgG1	Human	F	100 µg	CL7655APC
	Alexa Fluor®488	67	Mouse IgG1	Human	F, C, IF	100 µg	CL7655AF4
CD56 (Leu-19)	Purified	MY-31	Mouse IgG1, k	Human	F, IP, IF, C, AC, FN	250 µg	CL7656AP
	Biotin	MY-31	Mouse IgG1, k	Human	F, IP, IF, C	100 µg	CL7656B
	FITC	MY-31	Mouse IgG1, k	Human	F	100 µg	CL7656F
	PE	MY-31	Mouse IgG1, k	Human	F	50 µg	CL7656PE
	APC	MY-31	Mouse IgG1, k	Human	F	100 µg	CL7656APC
	Alexa Fluor®488	MY-31	Mouse IgG1, k	Human	F, IF, C	100 µg	CL7656AF4
CD59 (Protectin)	Purified	1F5	Mouse IgG1	Human	F	250 µg	CL7673AP
	Biotin	1F5	Mouse IgG1	Human	F	100 µg	CL7673B
	FITC	1F5	Mouse IgG1	Human	F	100 µg	CL7673F
	PE	1F5	Mouse IgG1	Human	F	50 µg	CL7673PE
	APC	1F5	Mouse IgG1	Human	F	100 µg	CL7673APC
	Alexa Fluor®647	MY-31	Mouse IgG1, k	Human	F, IF, C	100 µg	CL7656AF6
CD64	Purified	10.1	Mouse IgG1, k	Human	F, C, IF, IP, FN	250 µg	CL7664AP
	Low Endotoxin	10.1	Mouse IgG1, k	Human	F, C, IF, IP, FN	500 µg	CL7664LE
	Biotin	10.1	Mouse IgG1, k	Human	F, C, IF, IP	100 µg	CL7664B
	FITC	10.1	Mouse IgG1, k	Human	F, C, IF	100 µg	CL7664F
	PE	10.1	Mouse IgG1, k	Human	F	50 µg	CL7664PE
	APC	10.1	Mouse IgG1, k	Human	F	100 µg	CL7664APC
CD70	Purified	BU69	Mouse IgG1	Human	F, C, IP	200 µg	CL7625AP
	Biotin	BU69	Mouse IgG1	Human	F, C, IP	100 µg	CL7625B
	FITC	BU69	Mouse IgG1	Human	F, C	100 µg	CL7625F
	PE	BU69	Mouse IgG1	Human	F, C	50 µg	CL7625PE
	APC	BU69	Mouse IgG1	Human	F, C, IP	100 µg	CL7625APC
	Alexa Fluor®488	BU69	Mouse IgG1	Human	F, C, IF	100 µg	CL7625AF4
CD88 (CSa Receptor)	Purified	8D6	Rat IgG2a	Human	F	250 µg	CL7688AP
	Biotin	8D6	Rat IgG2a	Human	F	100 µg	CL7688B
	FITC	8D6	Rat IgG2a	Human	F	100 µg	CL7688F
	PE	8D6	Rat IgG2a	Human	F	50 µg	CL7688PE
	APC	8D6	Rat IgG2a	Human	F	100 µg	CL7688APC
	Alexa Fluor®488	8D6	Rat IgG2a	Human	F	100 µg	CL7688AF4
CD103 (Integrin alpha E/b7)	Purified	BP6	Mouse IgG1, k	Human	IF, IP, F	200 µg	CL7615AP
	APC	BP6	Mouse IgG1, k	Human	IF, F	100 µg	CL7615APC
	Biotin	BP6	Mouse IgG1, k	Human	IF, IP, F	100 µg	CL7615B
	FITC	BP6	Mouse IgG1, k	Human	IF, F	100 µg	CL7615F
	PE	BP6	Mouse IgG1, k	Human	F	50 µg	CL7615PE
	APC	BP6	Mouse IgG1, k	Human	IF, F	100 µg	CL7615APC
CD152 (CTLA-4)	Purified	A3.4H2.H12	Mouse IgG2a, k	Human	F	250 µg	CL7650AP
	FITC	A3.4H2.H12	Mouse IgG2a, k	Human	F	100 µg	CL7650F
	Alexa Fluor®488	A3.4H2.H12	Mouse IgG2a, k	Human	F	100 µg	CL7650AF4

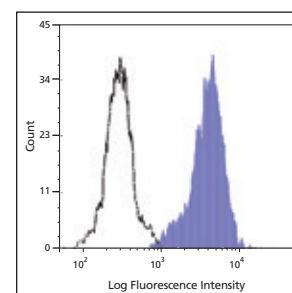
Please inquire about additional formats/sizes and azide free products.

Legend for Applications:

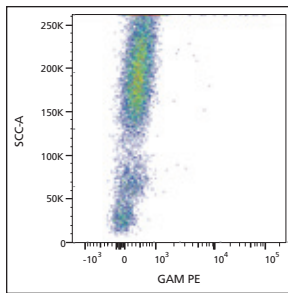
AC =Affinity Chromatography
C =Cryostat Sections
CT =Cytotoxicity Assay
E =ELISA
F =Flow Cytometry
FN =Functional Assay
IC =Immunocytochemistry
IF =Immunofluorescence
IHC =Immunohistochemistry
IP =Immunoprecipitation
IV =*In vivo* Assay
P =Paraffin-Embedded Sections
WB =Western Blotting



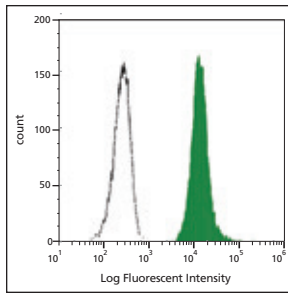
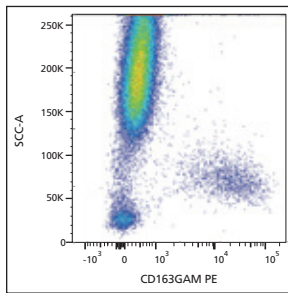
Human peripheral blood monocytes stained with FITC anti-human CD64, clone: 10.1 (**CL7664F**) (filled histogram) or FITC mouse IgG1 isotype control (open histogram).



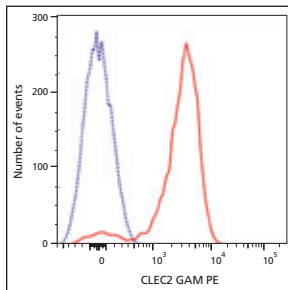
Human granulocytes stained with PE anti-human CD88 (CSa receptor), clone: 8D6 (**CL7688PE**) (filled histogram) or PE rat IgG2a isotype control (open histogram).



Human peripheral blood stained with purified anti-human CD163, clone: GHI/61 (**CL7617AP**) (below) vs. secondary alone control (above). Goat anti-mouse IgG PE was used as the secondary antibody.



Human red blood cells stained with APC anti-human CD235a, clone: YTH 89.1 (**CL7607APC**) (filled histogram) or APC rat IgG2b isotype control (open histogram).



Human platelets stained with purified anti-human CLEC2, clone: AYP1 (**CL7659AP**) (red histogram) vs. unstained control (blue histogram). Goat anti-mouse IgG PE was used as the secondary antibody

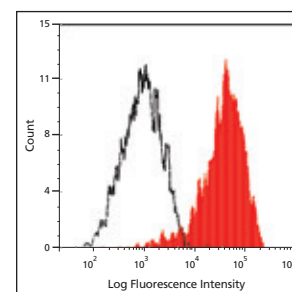
Specificity	Format	Clone	Isotype	Species Reactivity	Applications	Size	Cat. #
CD163	Purified	GHI/61	Mouse IgG1,k	Human	WB, IP, C, F	200 µg	CL7617AP
	APC	GHI/61	Mouse IgG1,k	Human	F	100 µg	CL7617APC
	Biotin	GHI/61	Mouse IgG1,k	Human	WB, IP, C, F	100 µg	CL7617B
	FITC	GHI/61	Mouse IgG1,k	Human	F, C	100 µg	CL7617F
	PE	GHI/61	Mouse IgG1,k	Human	F	50 µg	CL7617PE
	Alexa Fluor®488	GHI/61	Mouse IgG1,k	Human	F, C	100 µg	CL7617AF4
	Alexa Fluor®647	GHI/61	Mouse IgG1,k	Human	F, C	100 µg	CL7617AF6
CD200	Purified	1B9	Rat IgG2a	Human	F, E	250 µg	CL7669AP
	Biotin	1B9	Rat IgG2a	Human	F, E	100 µg	CL7669B
	FITC	1B9	Rat IgG2a	Human	F	100 µg	CL7669F
	PE	1B9	Rat IgG2a	Human	F	50 µg	CL7669PE
	APC	1B9	Rat IgG2a	Human	F	100 µg	CL7669APC
	Alexa Fluor®488	1B9	Rat IgG2a	Human	F	100 µg	CL7669AF4
	Alexa Fluor®647	1B9	Rat IgG2a	Human	F	100 µg	CL7669AF6
CD235a (Glycophorin A)	Purified	YTH 89.1	Rat IgG2b	Human	F, WB	200 µg	CL7607AP
	APC	YTH 89.1	Rat IgG2b	Human	F	100 µg	CL7607APC
	Biotin	YTH 89.1	Rat IgG2b	Human	F, WB	100 µg	CL7607B
	FITC	YTH 89.1	Rat IgG2b	Human	F	100 µg	CL7607F
	PE	YTH 89.1	Rat IgG2b	Human	F	50 µg	CL7607PE
	Alexa Fluor®488	YTH 89.1	Rat IgG2b	Human	F	100 µg	CL7607AF4
	Complement Component C1q	Purified	MhC5B9	Mouse IgG1	Human	IF, C, WB, E	250 µg
APC		MhC5B9	Mouse IgG1	Human	F	100 µg	CL7611APC
Biotin		MhC5B9	Mouse IgG1	Human	F, IF	100 µg	CL7611B
FITC		MhC5B9	Mouse IgG1	Human	F, IF	100 µg	CL7611F
PE		MhC5B9	Mouse IgG1	Human	F	50 µg	CL7611PE
C-type lectin-like receptor 2 (CLEC2)	Purified	AYP1	Mouse IgG1	Human	F, IF, IP, FN	200 µg	CL7659AP
	Low Endotoxin	AYP1	Mouse IgG1	Human	F, IF, IP, FN	500 µg	CL7659LE
	APC	AYP1	Mouse IgG1	Human	F, IF	100 µg	CL7659APC
	Biotin	AYP1	Mouse IgG1	Human	F, IF, IP	100 µg	CL7659B
	FITC	AYP1	Mouse IgG1	Human	F, IF	100 µg	CL7659F
	PE	AYP1	Mouse IgG1	Human	F, IF	50 µg	CL7659PE
	Alexa Fluor®488	AYP1	Mouse IgG1	Human	F, IF	100 µg	CL7659AF4
HLA-ABC	FITC	W6/32 HLK	Mouse IgG2a	Human	F	100 µg	CLHLA-01F
	Purified	W6/32 HLK	Mouse IgG2a	Human	F, CT, IP	500 µg	CLHLA-01AP
	Biotin	W6/32 HLK	Mouse IgG2a	Human	F	100 µg	CLHLA-01B
	PE	W6/32 HLK	Mouse IgG2a	Human	F	50 µg	CLHLA-01PE
	Alexa Fluor®488	W6/32 HLK	Mouse IgG2a	Human	F	100 µg	CLHLA-01AF4
	Alexa Fluor®647	W6/32 HLK	Mouse IgG2a	Human	F	100 µg	CLHLA-01AF6
	Alexa Fluor®700	W6/32 HLK	Mouse IgG2a	Human	F	100 µg	CLHLA-01AF7
HLA-DR	Purified	YE2/36 HLK	Rat IgG2a	Human	F, C, P	500 µg	CLHLA-02AP
	Biotin	YE2/36 HLK	Rat IgG2a	Human	F	100 µg	CLHLA-02B
	FITC	YE2/36 HLK	Rat IgG2a	Human	F	100 µg	CLHLA-02F
	Alexa Fluor®488	YE2/36 HLK	Rat IgG2a	Human	F, C, P	100 µg	CLHLA-02AF4
	Alexa Fluor®647	YE2/36 HLK	Rat IgG2a	Human	F, C, P	100 µg	CLHLA-02AF6
	Alexa Fluor®700	YE2/36 HLK	Rat IgG2a	Human	F, C, P	100 µg	CLHLA-02AF7
	Purified	YD1/63.4.10	Rat IgG2a	Human	F, C, P	500 µg	CLHLA-03AP
Biotin	YD1/63.4.10	Rat IgG2a	Human	F	100 µg	CLHLA-03B	
FITC	YD1/63.4.10	Rat IgG2a	Human	F	100 µg	CLHLA-03F	
PE	YD1/63.4.10	Rat IgG2a	Human	F	50 µg	CLHLA-03PE	

Specificity	Format	Clone	Isotype	Species Reactivity	Applications	Size	Cat. #
IgG Fc	Purified	HP6017	Mouse IgG2a	Human	WB, E, F	50 µg	CL6017AP
	Purified	HP6017	Mouse IgG2a	Human	WB, E, F	250 µg	CL6017AP-2
	Purified	HP6017	Mouse IgG2a	Human	WB, E, F	500 µg	CL6017AP-3
	Biotin	HP6017	Mouse IgG2a	Human	WB, E, F	100 µg	CL6017B
	FITC	HP6017	Mouse IgG2a	Human	F	100 µg	CL6017F
	PE	HP6017	Mouse IgG2a	Human	F	50 µg	CL6017PE
IgG Fd	Purified	HP6045	Mouse IgG1	Human	F, WB, E	200 µg	CL6045AP
	Biotin	HP6045	Mouse IgG1	Human	F, WB, E	100 µg	CL6045B
	FITC	HP6045	Mouse IgG1	Human	F	100 µg	CL6045F
	PE	HP6045	Mouse IgG1	Human	F	50 µg	CL6045PE
IgG2 Fc	Purified	HP6002	Mouse IgG1	Human	WB, E, F, IP, C	50 µg	CL6022AP
	Purified	HP6002	Mouse IgG1	Human	WB, E, F, IP, C	250 µg	CL6022AP-2
	Purified	HP6002	Mouse IgG1	Human	WB, E, F, IP, C	500 µg	CL6022AP-3
	Biotin	HP6002	Mouse IgG1	Human	WB, E, F, IP, C	100 µg	CL6022B
	FITC	HP6002	Mouse IgG1	Human	F	100 µg	CL6022F
	PE	HP6002	Mouse IgG1	Human	F	50 µg	CL6022PE
IgG3 (Hinge region)	Purified	HP6050	Mouse IgG1	Human	WB, E, F, P, C	50 µg	CL6050AP
	Purified	HP6050	Mouse IgG1	Human	WB, E, F, P, C	250 µg	CL6050AP-2
	Purified	HP6050	Mouse IgG1	Human	WB, E, F, P, C	500 µg	CL6050AP-3
	Biotin	HP6050	Mouse IgG1	Human	WB, E, F, P, C	100 µg	CL6050B
	FITC	HP6050	Mouse IgG1	Human	F	100 µg	CL6050F
	PE	HP6050	Mouse IgG1	Human	F	50 µg	CL6050PE
Kappa Light Chain	Purified	HP6053	Mouse IgG1, k	Human	WB, E, F, P, C	50 µg	CL6053AP
	Purified	HP6053	Mouse IgG1, k	Human	WB, E, F, P, C	250 µg	CL6053AP-2
	Biotin	HP6053	Mouse IgG1, k	Human	WB, E, F, P, C	100 µg	CL6053B
	FITC	HP6053	Mouse IgG1, k	Human	F	100 µg	CL6053F
	PE	HP6053	Mouse IgG1, k	Human	F	50 µg	CL6053PE
	APC	HP6053	Mouse IgG1, k	Human	F	100 µg	CL6053APC
Lambda Light Chain	Purified	HP6054	Mouse IgG2a	Human	WB, E, F, P, C	50 µg	CL6054AP
	Purified	HP6054	Mouse IgG2a	Human	WB, E, F, P, C	250 µg	CL6054AP-2
	Biotin	HP6054	Mouse IgG2a	Human	WB, E, F, P, C	100 µg	CL6054B
	FITC	HP6054	Mouse IgG2a	Human	F	100 µg	CL6054F
	PE	HP6054	Mouse IgG2a	Human	F	50 µg	CL6054PE
	APC	HP6054	Mouse IgG2a	Human	F	100 µg	CL6054APC
Mac-2 (Gal-3, Galectin-3)	Purified	M3/38	Rat IgG2a	Human/Mouse	F, IF, C, E, P, WB	100 µg	CL8942AP
	Biotin	M3/38	Rat IgG2a	Human/Mouse	F, IF, C, E, P, WB	100 µg	CL8942B
	FITC	M3/38	Rat IgG2a	Human/Mouse	F, IF	100 µg	CL8942F
	Alexa Fluor®488	M3/38	Rat IgG2a	Human/Mouse	F, IF, C, P	100 µg	CL8942AF4
	Alexa Fluor®647	M3/38	Rat IgG2a	Human/Mouse	F, IF, C, P	100 µg	CL8942AF6
	Alexa Fluor®700	M3/38	Rat IgG2a	Human/Mouse	F, IF, C, P	100 µg	CL8942AF7
TLR2	Purified	IIIG7	Mouse IgG1	Human	F, IP, E	200 µg	CL7622AP
	Biotin	IIIG7	Mouse IgG1	Human	F	100 µg	CL7622B
	FITC	IIIG7	Mouse IgG1	Human	F	100 µg	CL7622F
	PE	IIIG7	Mouse IgG1	Human	F	50 µg	CL7622PE

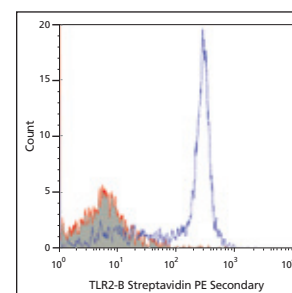
Please inquire about additional formats/sizes and azide free products.

Legend for Applications:

AC =Affinity Chromatography
C =Cryostat Sections
CT =Cytotoxicity Assay
E =ELISA
F =Flow Cytometry
FN =Functional Assay
IC =Immunocytochemistry
IF =Immunofluorescence
IHC =Immunohistochemistry
IP =Immunoprecipitation
IV =*In vivo* Assay
P =Paraffin-Embedded Sections
WB =Western Blotting



Thioglycolate-elicited C57BL/6 mouse peritoneal macrophages stained with purified anti-mouse/human galectin-3, clone: M3/38 (**CL8942AP**) (filled histogram) or rat IgG2a isotype control (open histogram). Goat anti-rat IgG PE was used as the secondary antibody.



Human peripheral blood leukocytes stained with biotin anti-human TLR2 (CD282), clone: IIIG7 (**CL7622B**) (blue histogram) or biotin mouse IgG1 isotype control (red histogram). Followed by staining with PE streptavidin.

CEDARLANE



official distributor

SZABO-SCANDIC HandelsgmbH
Quellenstraße 110, A-1100 Wien
T. +43(0)1 489 3961-0
F. +43(0)1 489 3961-7
mail@szabo-scandic.com
www.szabo-scandic.com



**SZABO
SCANDIC**

Alexa Fluor® is a registered trademark of Life Technologies Corporation.