

official distributor

SZABO-SCANDIC Handels GmbH
Quellenstraße 110, A-1100 Wien
T. +43(0)1 489 3961-0
F. +43(0)1 489 3961-7
mail@szabo-scandic.com
www.szabo-scandic.com



SZABO
SCANDIC

Mouse and Rat Reagents

for immunology research

XVa

Antibodies

Complement

Lymphocyte Cell Separation Media

Cell Purification Immunocolumns

ELISA/ELISPOT

...and more

Custom Services

CEDARLANE® Corporation manufactures complement, Lympholyte® cell separation media, cell purification immunocolumns, neuronal cell lines and a wide range of antibodies.

CEDARLANE continues to offer our Custom Antibody Services and increased demand has led to the continued expansion of our facility. We understand the varied nature of custom work and encourage you to call our qualified staff to discuss the details of your project. Please inquire about other services not listed.

Be assured that we at CEDARLANE are dedicated to ensuring the confidentiality of all projects we discuss.

Services include:

- Peptide antigen design and synthesis
- Protein Expression in *E. coli* system and purification
- Polyclonal antibody production in a varied selection of host animals including: rabbits, sheep, goats, mice, rats, guinea pigs, ferrets, llama, and more
- Monoclonal antibody production – as ascites or in cell line supernatant
- Low endotoxin antibody production and purification
- Antibody Purification (Protein A/G; affinity; ammonium sulfate precipitation)
- Custom conjugations including biotin, FITC, HRP, PE, APC and other dyes or carrier proteins
- Lyophilization/freeze-drying services
- Custom Microtiter Plate Coating
- Testing services

CEDARLANE also offers:

- Special pricing on bulk orders

CEDARLANE continually endeavors to expand our line of antibodies. Please let us know if there is a specific antibody or clone that interests you. Please also inquire for special formats or sizes.



Please contact us for a quote:
research@cedarlanelabs.com

CEDARLANE Laboratories Limited is
an ISO9001-2000 registered company.

Contact CEDARLANE

4410 Paletta Court, Burlington, ON L7L 5R2

Toll Free: 1-800-268-5058

Phone: 289-288-0001 | Fax: 289-288-0020

antibodies@cedarlanelabs.com | www.cedarlanelabs.com

Table of Contents

Specialty	4
Lympholyte	4
Complement	7
Immunocolumns	8
Nerve Growth Factor	9
FocusClear™	10
O-Sialoglycoprotein Endopeptidase	11
ELISA and ELISPOT Kits (and related products)	12
Mouse Antibodies	14
Rat Antibodies	42
Secondary Reagents	57
Antibodies to Mouse Immunoglobulins	57
Antibodies to Rat Immunoglobulins	58
Antibodies to Rabbit Immunoglobulins	59
Antibodies to Goat Immunoglobulins	59
Antibodies to Hamster (Golden Syrian/Armenian) Immunoglobulins	59
Antibodies to Sheep Immunoglobins	59
Antibodies to Human Immunoglobulins	60
Streptavidin	60
Istotypic Controls	61
Isotypic Controls	61
Negative Controls	63
Control Ascites Fluid	63
Index	64

Specialty

Lympholyte

CEDARLANE's Lympholyte® cell separation centrifugation media has been specifically designed for the isolation of viable lymphocytes from mouse, rat, rabbit, human and other mammalian cell populations. All products are supplied as sterile liquid with varying densities.

Lympholyte®-M Cell Separation Media

For the isolation of lymphocytes from Mouse lymphoid tissue

Lympholyte®-M can be utilized in a simple protocol to eliminate erythrocytes, dead cells and debris from murine spleen, lymph node, thymus and bone marrow suspensions. The resulting cell population demonstrates a high and nonselective recovery of viable lymphocytes that are suitable for use as target cells in cytotoxicity, FACS assays, and in *in vivo* and *in vitro* functional studies. Other successful applications include:

- the removal of dead cells in sequential cytotoxicity studies eg. B-cell depletion.
- the removal of erythrocytes, dead cells and debris from other murine tissue suspensions including liver and lung.
- the harvesting of viable cells and removal of dead cells and debris from various clone cell and hybridoma cell lines.
- the isolation of murine nuclear epidermal cells

Density	Cat #	Size
1.0875 ± 0.001 @ 25°C, g/mL	CL5030	5 x 30 mL
1.0875 ± 0.001 @ 25°C, g/mL	CL5031	100 mL
1.0875 ± 0.001 @ 25°C, g/mL	CL5035	500 mL

Applications for Lympholyte® include:

Isolation of viable lymphocytes from lymphoid organs by removal of red and dead cells.

Removal of dead cells from lymphocyte suspensions; for example, after treatment with antibody plus complement or following cell culture.

Not recommended for mouse blood, see Lympholyte®-Mammal

Lympholyte®-R Cell Separation Media

For the isolation of lymphocytes from Rat lymphoid tissue

Lympholyte®-Rat can be utilized with a simple protocol for the elimination of erythrocytes, dead cells and debris from rat spleen, lymph node, thymus and bone marrow suspensions. The resulting cell population demonstrates a high and non-selective recovery of viable lymphocytes, which are suitable for use as target cells in cytotoxicity and FACS assays, as well as in *in vivo* and *in vitro* functional studies. Other successful applications include:

- the removal of dead cells in sequential cytotoxicity studies eg. B-cell depletion.
- the removal of erythrocytes, dead cells and debris from other rat tissue suspensions including liver and lung.
- the harvesting of viable cells and removal of dead cells and debris from various clone cell and hybridoma cell lines.

Density	Cat #	Size
1.0940 ± 0.001 @ 25°C, g/mL	CL5040	5 x 30 mL
1.0940 ± 0.001 @ 25°C, g/mL	CL5041	100 mL
1.0940 ± 0.001 @ 25°C, g/mL	CL5045	500 mL

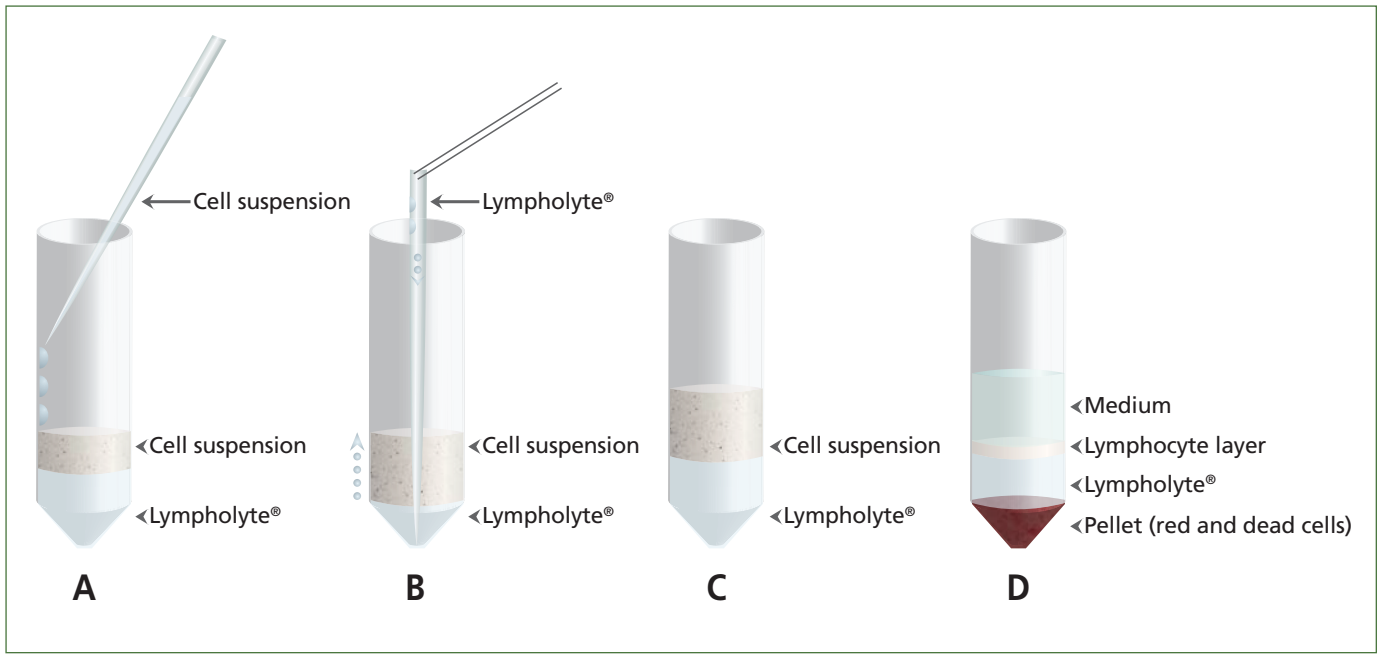
Other Cell Separation Medias

Product	Density	Cat #	Size	Main Application
Lympholyte®-Mammal Cell Separation Media	1.0860 ± 0.001 @ 25°C, g/mL	CL5110	5 x 30 mL	Isolation of viable lymphocytes from peripheral blood of most mammalian species
For species tested, please contact: tech@cedarlanelabs.com	1.0860 ± 0.001 @ 25°C, g/mL	CL5115	100 mL	Isolation of viable lymphocytes from peripheral blood of most mammalian species
	1.0860 ± 0.001 @ 25°C, g/mL	CL5120	500 mL	Isolation of viable lymphocytes from peripheral blood of most mammalian species
	Lympholyte®-Rabbit Cell Separation Media	1.0965 ± 0.001 @ 25°C, g/mL	CL5050	5 x 30 mL
Lympholyte®-H Cell Separation Media	1.0770 ± 0.001 @ 25°C, g/mL	CL5010	5 x 30 mL	Isolation of viable HUMAN lymphocytes from peripheral blood
	1.0770 ± 0.001 @ 25°C, g/mL	CL5015	100 mL	Isolation of viable HUMAN lymphocytes from peripheral blood
	1.0770 ± 0.001 @ 25°C, g/mL	CL5016	6 x 100 mL	Isolation of viable HUMAN lymphocytes from peripheral blood
	1.0770 ± 0.001 @ 25°C, g/mL	CL5020	500 mL	Isolation of viable HUMAN lymphocytes from peripheral blood
	1.0770 ± 0.001 @ 25°C, g/mL	CL5026	6 x 500 mL	Isolation of viable HUMAN lymphocytes from peripheral blood
Lympholyte®-poly Cell Separation Media	1.113 ± 0.001 @ 25°C, g/mL	CL5070	100 mL	Isolation of viable HUMAN polymorphonuclear cells
	1.113 ± 0.001 @ 25°C, g/mL	CL5071	250 mL	Isolation of viable HUMAN polymorphonuclear cells
Lympholyte®-1.1	1.100 ± 0.001 @ 25°C, g/mL	CL5095	500 mL	A high density Lympholyte® solution which can be diluted with PBS (without Ca ²⁺ /Mg ²⁺). Isolation of pancreatic islet cells prior to expanding them <i>in vitro</i>

Lympholyte (continued)

Cytotoxicity Media

Product	Density	Cat #	Size	Main Application
Cytotoxicity Media	Sterile Liquid	CL95100	5 x 100 mL	Cell culture media designed to minimize background cytotoxicity to Mammalian Lymphocytes



Complement

CEDARLANE has been producing complement for over 50 years and is a leading global supplier of this product. Special processing techniques are used to yield products with high complement activity and low background cytotoxicity.

Low-Tox-M Rabbit Complement for use with Mouse Cells

Product	Format	Cat #	Size	Main Applications
Low-Tox [®] -M Rabbit Complement	Lyophilized	CL3051	5 x 1 mL	Cytotoxicity assays using MOUSE lymphocytes
Rabbit serum provides the most potent source of complement for cytotoxicity techniques utilizing antisera to mouse lymphocytes. However, rabbit serum is very toxic to mouse lymphocytes, particularly thymocytes. This toxicity can be reduced significantly by appropriate absorptions. Each lot is thoroughly tested for low toxicity and high activity, and can be used without further processing.				

Low-Tox-R Rabbit Complement for use with Rat Cells

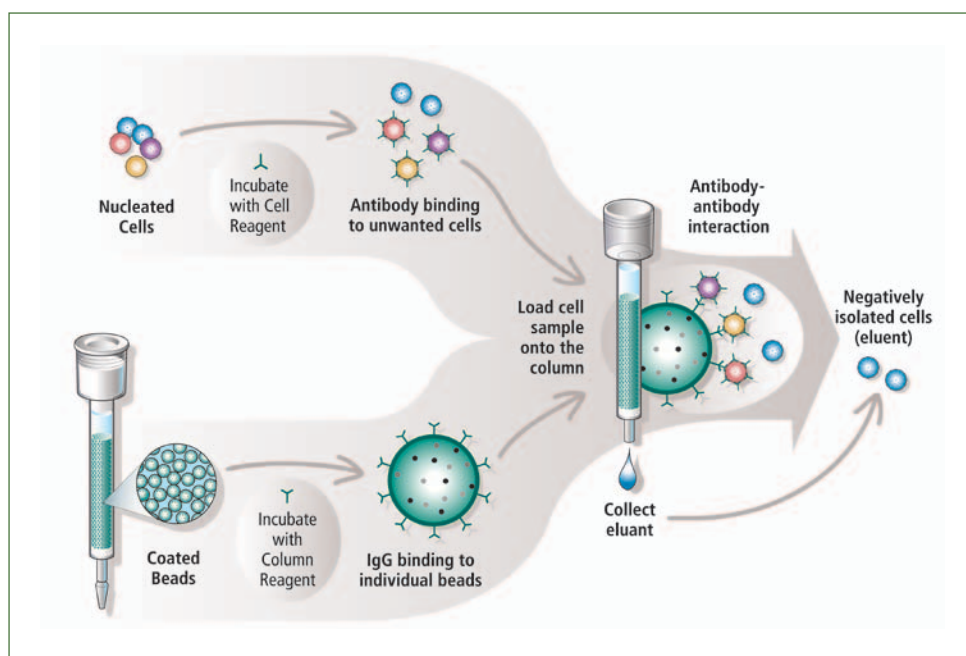
Product	Format	Cat #	Size	Main Applications
Low-Tox [®] -R Rabbit Complement	Lyophilized	CL3061	3 x 1 mL	Cytotoxicity assays using RAT lymphocytes
Cedarlane Low-Tox [®] -R Complement is derived from a highly potent mammalian source of complement, and is adsorbed with agarose and sheep erythrocytes to reduce nonspecific cytotoxicity to rat lymphocytes. This process provides an excellent source of complement for cytotoxicity techniques utilizing antisera to rat lymphocytes. Each lot of Low-Tox [®] -R Complement is thoroughly tested for high complement activity and low background cytotoxicity to rat lymphocytes.				

Other Complement Media

Product	Format	Cat #	Size	Main Applications
Baby Rabbit Complement	Lyophilized	CL3441	10 x 1 mL	Cytotoxicity assays
	Lyophilized	CL3442	2 mL	
Baby Rabbit Complement Tissue (Culture Grade)	Frozen	CL3441-S	1 mL	Bacteriocidal, cytotoxicity and depletion/purging assays especially in cancer, transplantation studies, and vaccine quality control and manufacturing
	Frozen	CL3441-S50	50 mL	
	Frozen	CL3441-S100	100 mL	
Standard Rabbit Complement	Frozen	CL3005	5 x 5 mL	HLA-ABC tissue typing
	Frozen	CL3010	100 mL	
	Lyophilized	CL3111	25 x 1 mL	
	Lyophilized	CL3112	10 x 2 mL	
	Lyophilized	CL3115	5 x 5 mL	
Rabbit Complement MA	Lyophilized	CL3221	10 x 1 mL	Cytotoxicity assays using monoclonal antibodies to HUMAN lymphocytes
	Lyophilized	CL3225	5 x 5 mL	
Low-Tox [®] -H Rabbit Complement	Frozen	CL3305	2 x 5 mL	HLA-DR tissue typing
	Frozen	CL3310	100 mL	
	Lyophilized	CL3331	10 x 1 mL	
	Lyophilized	CL3335	2 x 5 mL	
Standard Guinea Pig Complement	Lyophilized	CL5000	5 x 5 mL	Haemolytic plaque assays/Complement fixation assays
	Lyophilized	CL5000-1	5 x 1 mL	
Hemo-Lo Guinea Pig Complement	Lyophilized	CL4555	5 x 5 mL	sRBC assays
Low-Tox [®] Guinea Pig Complement	Lyophilized	CL4051	5 x 1 mL	Cytotoxicity assays/plaque assays

Immunocolumns

CEDARLANE's collect™ Immunocolumn kits are simple, rapid, affinity chromatography tools for the gentle, non-magnetic enrichment of immune cell populations in humans, mice and rats. By the process of negative selection, virtually all unwanted cells are removed by the immunocolumns, resulting in a highly enriched population of the desired cells in the eluent. This process ensures that the isolated cells are unaltered and fully viable. The kits are in a sterile, ready-to use format with quality controlled columns and reagents.



CEDARLANE's collect™ Immunocolumn kits NOW INCLUDE Lympholyte® (our density separation medium which eliminates erythrocytes, dead cells and debris from spleen, lymph node, thymus, bone marrow and blood suspensions), PBS and Lysing buffer.

Mouse

Product	Format	Cat #	Size
T Cell Immunocolumns	Kit	CL101	10 Col.
	Kit (high capacity)	CL101-2	2 Col.
	Kit	CL101-5	5 Col.
CD4 Cell Immunocolumns	Kit	CL111	10 Col.
	Kit (high capacity)	CL111-2	2 Col.
	Kit	CL111-5	5 Col.
CD8 Cell Immunocolumns	Kit	CL121	10 Col.
	Kit (high capacity)	CL121-2	2 Col.
	Kit	CL121-5	5 Col.
B Cell Immunocolumns	Kit	CL131	10 Col.
	Kit	CL131-2	2 Col.
	Kit	CL131-5	5 Col.

Rat

Product	Format	Cat #	Size
T Cell Immunocolumns	Kit	CL102	10 Col.
	Kit (high capacity)	CL102-2	2 Col.
	Kit	CL102-5	5 Col.
	Kit (medium capacity)	CL102-5PS	5 Col.
CD4 Cell Immunocolumns	Kit	CL112	10 Col.
	Kit	CL112-2	2 Col.
	Kit	CL112-5	5 Col.
CD8 Cell Immunocolumns	Kit	CL122	10 Col.
	Kit (high capacity)	CL122-2	2 Col.
	Kit	CL122-5	5 Col.
	Kit (medium capacity)	CL122-5PS	5 Col.

Nerve Growth Factor

Antibodies

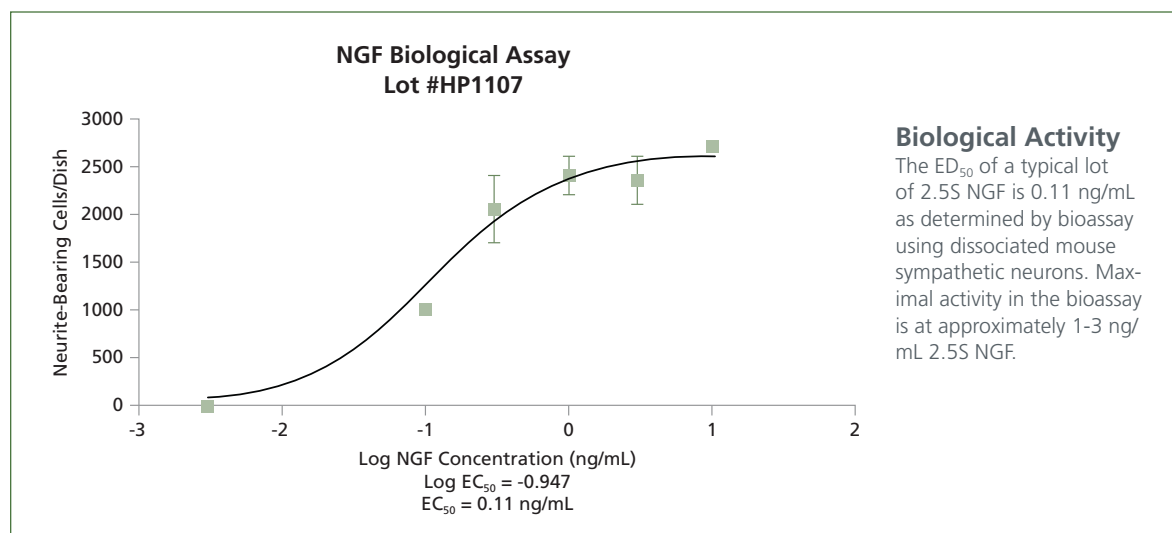
CEDARLANE's polyclonal antibodies to NGF all react with the beta subunit of both the 2.5S and 7S forms of NGF from mouse, rat and human.

Specificity	Isotype	Format	Applications	Size	Cat #
Nerve Growth Factor (beta subunit)	Rabbit serum	Lyophilized	N, WB	1 mL	CLMCNET-011
	Sheep serum	Lyophilized	N, WB, IV	1 mL	CLMCNET-021
	Sheep IgG	Purified	N, WB, IV	1 mg	CLMCNET-031
	Sheep IgG	Purified	N, E, WB, E, IV	1 mg	CLMCNET-041
	Sheep IgG	Purified	N, E, WB, E, IV	0.5 mg	CLMCNET-041.5
	Rabbit IgG	Purified	N, WB	1 mg	CLMCNET-051
	Rabbit IgG	Affinity Purified	N, WB	100 µg	CLMCNET-061.1

2.5S Nerve Growth Factor (NGF)

CEDARLANE's ultrapure NGF is prepared from male mouse submandibular gland and is useful for the study of neuronal growth and differentiation in culture and *in vivo*. In the peripheral nervous system, Nerve Growth Factor (NGF) promotes the survival and growth of sympathetic and spinal sensory neurons. In the central nervous system, NGF enhances survival and differentiation of cholinergic neurons, particularly in the basal forebrain. NGF also appears to be a mitotic agent for mast cells and for basophilic leukocytes. These preparations of NGF have been used to study the development of sympathetic neurons, the differentiation of PC12 cells, to examine proliferation of mast cells and leukocytes, and to study processing of proNGF.

Specificity	Format	Applications	Size	Cat #
2.5S NGF (HPLC purified) (>97% pure)	Lyophilized	FN	1 mg	CLMCNET-001
	Lyophilized	FN	100 µg	CLMCNET-001.1
	Lyophilized	FN	250 µg	CLMCNET-001.25
2.5S NGF (non-HPLC purified) (>90% pure)	Lyophilized	FN	1 mg	CLMCNET-005
	Lyophilized	FN	100 µg	CLMCNET-005.1
	Lyophilized	FN	250 µg	CLMCNET-005.25



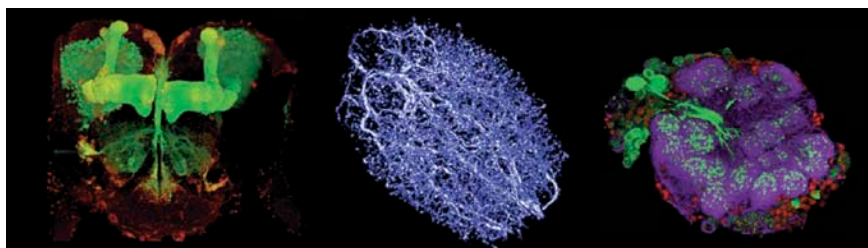
FocusClear™

A water-soluble clearing agent that increases the transparency of biological tissues.

- Allows for visualization of internal objects up to 500 µm below the tissue surface.
- Increases depth of view by at least 2X over traditional glycerol-based mounting media.
- Increases the efficacy of laser excitation and optical signal detection of either color or fluorescence.
- Suitable for immunofluorescent-labelled single cells and tissues, *in situ* hybridization, tissue or whole-mount immunohistochemistry and fluorescent protein samples.

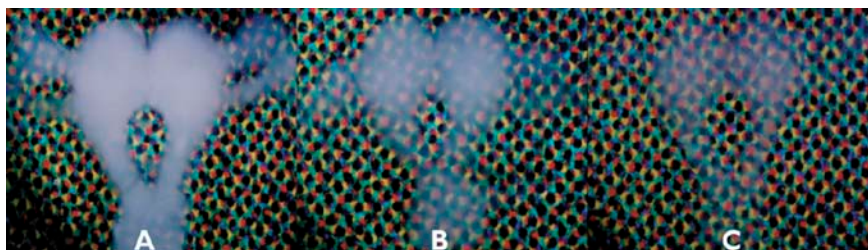


Description	Cat #	
FocusClear™ kit	F101-KIT	
Includes 5 mL each of FocusClear™, MountClear™, & Immersion Solution-M		
Components separately...	FocusClear™	FC-101
	MountClear™	MC-301
	Immersion Solution-M	IS-502



Makes Specimens Transparent

American cockroach (*Periphera americana*) brain tissues of approximately 1000 µm thick. Brains were dissected and immediately fixed in 4% paraformaldehyde for 6 hours. Then, 1% Triton X-100 was applied for permeating the brain tissues overnight. Subsequently, the brains were cleared in PBS, FocusClear™ or Glycerol for 1 hour and visualized under a dissection microscope.



A simple way to clear a tissue of 1000µm thick

Results:

- incubation in PBS
- Incubation in saline containing 80% glycerol; and
- incubation with FocusClear™.

Using a dissecting microscope the degree of brain transparency is evaluated by color grids beneath the tissue sections. Bar = 1mm.

O-Sialoglycoprotein Endopeptidase

O-sialoglycoprotein endopeptidase is a neutral metalloprotease purified from *Mannheimia haemolytica* (formerly known as *Pasteurella haemolytica*). This unique proteolytic enzyme specifically cleaves proteins bearing clusters of negatively charged sugars, so that O-sialoglycoproteins and sulfated glycoproteins are good substrates. The enzyme is not affected by serine protease inhibitors, aspartyl protease inhibitors or thiol inhibitors.

Numerous O-sialoglycoproteins have been shown to be cleaved by this enzyme, but no N-linked sialoglycoproteins or unglycosylated proteins have been identified as substrates. The list of O-sialoglycoprotein substrates includes human RBC glycoporphin A; the human antigens CD34, CD43, CD44, CD45; the IL-7 receptor; the receptors for E-selectin, L-selectin and P-selectin; the human tumor antigens epiglycanin and epitectin; the platelet glycoprotein 1ba; the laminin binding proteins, dystroglycan and cranin; the lymphocyte adhesion molecule VAP-1; viral glycoproteins; and bone sialoprotein. A sulfated glycoprotein, CD24, is also cleaved by the enzyme.

Applications: The highly specific O-sialoglycoprotein endopeptidase is ideal for characterizing cell surface glycoproteins and has been used to modify the adhesion properties of cells, including the rolling behaviour of neutrophils. It has been used for the immunomagnetic separation of human stem cells bearing the CD34 antigen, in that it will cleave the antigen and release the antibody-magnetic bead complex from the isolated stem cells. The enzyme can be used to degrade O-sialoglycoproteins to enable peptide sequencing of the resultant fragments.

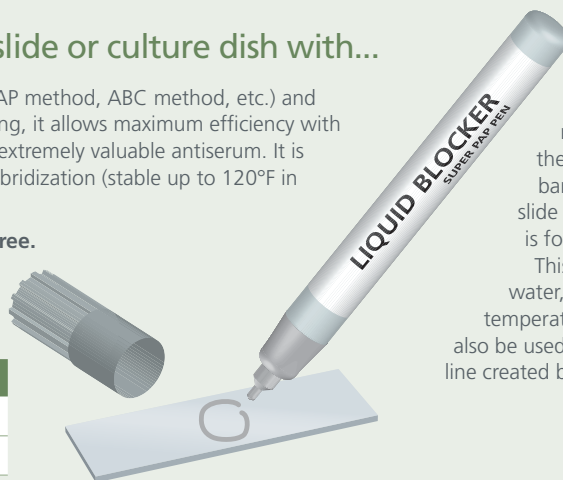
Description	Format	Size	Cat #
O-Sialoglycoprotein Endopeptidase	Lyophilized	~1.2 mg	CLE100

Create a hydrophobic barrier on your slide or culture dish with...

Pap Pen

Useful for IHC staining (PAP method, ABC method, etc.) and immunofluorescent staining, it allows maximum efficiency with the minimum amount of extremely valuable antiserum. It is also suitable for *in-situ* hybridization (stable up to 120°F in microwave heat).

This product is RNAse free.



Description	Cat #
Super PAP PEN (tip 1/5" diameter, 6 mL)	MU12
Mini PAP PEN (tip 1/10" diameter, 3 mL)	MU22

A small amount of reagent is used within the isolated hydrophobic barrier area on the same slide or culture dish, which is formed by the PAP PEN. This barrier is resistant to water, alcohol, acetone and temperature. The PAP PEN can also be used on wet surfaces. The line created by the PAP PEN can be removed with xylene.

ELISA and ELISPOT Kits (and related products)

Multi-species

Specificity	Size	Cat #
8-hydroxy2-deoxy Guanosine (8-OHdG) (DNA Damage) EIA kit	96T	CL89120K-96T
	480T	CL89120K-480T

CytoKine/Chemokine/Growth Factor ELISAs

Mouse

Specificity	Size	Cat #
Mouse IFN-gamma ELISA kit (precoated)	48T	CL89130K-48
	96T	CL89130K-96
Mouse IL-1a ELISA kit (precoated)	48T	CL89131K-48
	96T	CL89131K-96
Mouse IL-1beta ELISA kit (precoated)	48T	CL89132K-48
	96T	CL89132K-96
Mouse IL-2 ELISA kit (precoated)	48T	CL89133K-48
	96T	CL89133K-96
Mouse IL-4 ELISA kit (precoated)	48T	CL89134K-48
	96T	CL89134K-96
Mouse IL-5 ELISA kit (precoated)	48T	CL89135K-48
	96T	CL89135K-96
Mouse IL-6 ELISA kit (precoated)	48T	CL89136K-48
	96T	CL89136K-96
Mouse IL-10 ELISA kit (precoated)	48T	CL89137K-48
	96T	CL89137K-96
Mouse IL-12 ELISA kit (precoated)	48T	CL89138K-48
	96T	CL89138K-96
Mouse IL-12/IL-23p40 ELISA kit (precoated)	48T	CL89139K-48
	96T	CL89139K-96
Mouse IL-17A ELISA kit (precoated)	48T	CL89122K-48
	96T	CL89122K-96
Mouse TGF-beta1 ELISA kit (precoated)	48T	CL89123K-48
	96T	CL89123K-96
Mouse TNF-alpha ELISA kit (precoated)	48T	CL89124K-48
	96T	CL89124K-96
Mouse VEGF-A ELISA kit (precoated)	48T	CL89125K-48
	96T	CL89125K-96
Mouse MCP-1 ELISA kit (precoated)	48T	CL89126K-48
	96T	CL89126K-96
Mouse IgE ELISA kit (precoated)	48T	CL89127K-48
	96T	CL89127K-96

ELISA and ELISPOT Kits (and related products) (continued)

CytoKine/Chemokine/Growth Factor ELISAs

Rat

Specificity	Size	Cat #
Rat IFN-gamma ELISA kit (precoated)	48T	CL00110K-48
	96T	CL00110K-96
Rat TNF-alpha ELISA Kit (precoated)	48T	CL00111K-48
	96T	CL00111K-96

ELISPOT Kits

Specificity	Size	Cat #
Mouse IFN-gamma precoated ELISPOT kit	48T	CL89111K-48
	96T	CL89111K-96
	5×96T	CL89111K-500
Mouse IL-4 precoated ELISPOT kit	48T	CL89113K-48
	96T	CL89113K-96
	5×96T	CL89113K-500
ALL-IN-ONE mouse ELISPOT Accessory kit	10×96T	CL89000K
Magi PVDF coating buffer	5×96T	CL76001K
AEC coloring system	10×96T	CL76002K
PHA	50T	CL76003K
PMA plus Ionomycin	50T	CL76004K

Mouse Antibodies

Specificity	Format	Applications	Size	Cat #
Actin Clone: C4 Isotype: Mouse IgG1	Purified	IF, E, WB, P	100 µg	CLT9001
Actin Isotype: Clonal Rabbit IgG	Purified	WB, ELISA, IP, IHC	100 µL	CL2810AP
Alpha-Actin Clone: ASM-1 Isotype: Mouse IgG2a	Purified	C, WB, IF	50 µg	CLT9000
Albumin (Polyclonal Rabbit) Isotype: Rabbit IgG	Antiserum	IP, ID	2 mL	CLA3140
	IgG Fraction	IP, ID	20 mg	CLAG3140
	FITC	F, IF	3 mg	CLFAG3140
Alpha/Beta TCR Clone: H57-597 Isotype: Hamster IgG	Ascites	F, IP, C	0.5 mL	CL7200A
	Purified	F, IP, C, WB	250 µg	CL7200AP
	APC	F	100 µg	CL7200APC
	Biotin	F, C	100 µg	CL7200B
	Biotin	F, C	300 µg	CL7200B-3
	FITC	F	100 µg	CL7200F
	FITC	F	300 µg	CL7200F-3
	PE	F	50 µg	CL7200PE
	PE	F	300 µg	CL7200PE-3
Aminopeptidase N gp 150 (CD13) Clone: ER-BMDM1 Isotype: Rat IgG2a	Purified	F, C, P	100 µg	CL89141
APRIL	Recombinant		20 µg	CL9245R
Asialo GM1 (Polyclonal Rabbit) Isotype: Rabbit IgG	Ig fraction	CT, FN, F, C, IP, P	1 mL	CL8955
B-71 Isotype: Rabbit IgG	Purified	N, E, WB	50 µg	CL9161AP
	Biotin	E	25 µg	CL9161B
B7-1, B7/BB1 (CD80) Clone: RMMP-1 Isotype: Rat IgG2a	Purified	F	200 µg	CL8980AP
	PE	F	50 µg	CL8980PE
	PE	F	300 µg	CL8980PE-3
B7-2, B70 (CD86) Clone: RMMP-2 Isotype: Rat IgG2a	Purified	F	200 µg	CL8986AP

Legend for Applications:

AC	Affinity Chromatography
AGG	Agglutination
C	Cryostat Sections
CT	Cytotoxicity Assay
D	Depletion
E	ELISA
EC	ELISA (Capture)
ED	ELISA (Detection)
F	Flow Cytometry
FN	Functional Assay
IC	Immunocytochemistry
ID	Immunodiffusion
IF	Immunofluorescence
IP	Immunoprecipitation
IV	In vivo Assay
N	Neutralization
P	Paraffin-Embedded Sections
R	RIA
WB	Western Blotting

! Please inquire about additional formats and azide free products.

Specificity	Format	Applications	Size	Cat #
Bcl-3 Clone: Ham 150-3.5 Isotype: Hamster IgG	Purified	E, WB	250 µg	CL7220AP
	Biotin	E	100 µg	CL7220B
	Biotin	E	300 µg	CL7220B-3
	FITC	F	100 µg	CL7220F
	FITC	F	300 µg	CL7220F-3
	PE	F	50 µg	CL7220PE
	PE	F	300 µg	CL7220PE-3
Bikunin Isotype: Rabbit IgG	Lyophilized Serum		200 µL	CLAS04-040
BLC (B Lymphocyte Chemoattractant)	Recombinant		20 µg	CL9232R
C-10 (CC Chemokine) Isotype: Rabbit IgG	Purified	N,E,WB	50 µg	CL9169AP
	Biotin	E	25 µg	CL9169B
	Recombinant		10 µg	CL9204R
C1q Clone: RmC7H8 Isotype: Rat IgG1	Purified	IF, C, WB, E	250 µg	CL7501AP
	Biotin	IF, E, WB	100 µg	CL7501B
	FITC	IF	100 µg	CL7501F
	PE	IF, E, WB, F	50 µg	CL7501PE
C3 (C3b, iC3b, C3dg) Clone: RmC11H9 Isotype: Rat IgG2a	Purified	IF, E, WB, F, IHC, C	250 µg	CL7503AP
	Purified	IF, E, WB, F, IHC, C	500 µg	CL7503AP-2
	APC	IF, F	100 µg	CL7503APC
	Biotin	IF, E, WB, F, IHC, C	100 µg	CL7503B
	FITC	IF	100 µg	CL7503F
	No Azide	IF, E, WB, F, IHC, C	1 µg	CL7503NA
	PE	IF, E, WB, F, IHC, C	50 µg	CL7503PE
C3/C3b/iC3b Clone: 6C9 Isotype: Mouse IgG1	TRITC	IF	100 µg	CL7503TRC
	Purified	F, E	250 µg	CL7631AP
	APC	F	100 µg	CL7631APC
	Biotin	F, E	100 µg	CL7631B
	FITC	F, E	100 µg	CL7631F
C3/C3b/iC3b Clone: 10C7 Isotype: Mouse IgG1	PE	F, E	50 µg	CL7631PE
	Purified	F, E	250 µg	CL7632AP
	Biotin	F, E	100 µg	CL7632B
	FITC	F, E	100 µg	CL7632F
C4 (C4b, C4d) Clone: RmC16D2 Isotype: Rat IgG2a	PE	F, E	50 µg	CL7632PE
	Purified	IF, C, WB, E	250 µg	CL7504AP
	Purified	IF, C, WB, E	500 µg	CL7504AP-2
	Biotin	IF, E, WB, F, IHC, C	100 µg	CL7504B
	FITC	IF	100 µg	CL7504F
C5 Isotype: Rabbit Ig	No Azide	IF, C, WB, E	1 mg	CL7504NA
	Ig Fraction	C, WB	100 µg	CL7505
C5a (Mouse, Recombinant)	Purified		50 µg	CL7336R

Specificity	Format	Applications	Size	Cat #
C5a desArg (Mouse, Recombinant)	Purified		50 µg	CL7337R
C5a receptor (CD88) Clone: 20/70 Isotype: Rat IgG2b	Purified	F, IF, Blocking	250 µg	CL7588AP
	Biotin	F, IF, Blocking	100 µg	CL7588B
	FITC	F, IF, Blocking	100 µg	CL7588F
	No Azide	F, IF, Blocking	1 mg	CL7588NA
	PE	F, IF, Blocking	50 µg	CL7588PE
C6 Isotype: Rabbit Ig	Ig Fraction	C, WB	100 µg	CL7506
Cardiotrophin-1	Recombinant		10 µg	CL9233R
CD2 (LFA-2) Clone: RM2-5 Isotype: Rat IgG2b	Purified	F, FN	200 µg	CL7800AP
	Biotin	F	100 µg	CL7800B
	Biotin	F	300 µg	CL7800B-3
	FITC	F	100 µg	CL7800F
	FITC	F	300 µg	CL7800F-3
	PE	F	50 µg	CL7800PE
	PE	F	300 µg	CL7800PE-3
CD3e Clone: 145-2C11 Isotype: Hamster IgG	Ascites	F, IP, WB, C, FN, IV	0.5 mL	CL7202A
	Purified	F, IP, WB, C, FN, IV	250 µg	CL7202AP
	Purified	F, IP, WB, C, FN, IV	500 µg	CL7202AP-2
	Biotin	F, WB, C	100 µg	CL7202B
	Biotin	F, WB, C	300 µg	CL7202B-3
	FITC	F	100 µg	CL7202F
	FITC	F	300 µg	CL7202F-3
	Low Endotoxin		500 µg	CL7202LE
CD3e Clone: 500-A2 Isotype: Hamster IgG	Purified	F, IP, C, FN, P	200 µg	CL7203AP
	Biotin	F, C	100 µg	CL7203B
	Biotin	F, C	300 µg	CL7203B-3
	FITC	F	100 µg	CL7203F
	FITC	F	300 µg	CL7203F-3
CD3z (LFA-2) Clone: H146-968 Isotype: Hamster IgG	Purified	F, IF	250 µg	CL7230AP
	Biotin	F, IF	100 µg	CL7230B
	Biotin	F, IF	300 µg	CL7230B-3
	FITC	F, IF	100 µg	CL7230F
	FITC	F, IF	300 µg	CL7230F-3
	PE	F, IF	50 µg	CL7230PE
	PE	F, IF	300 µg	CL7230PE-3
CD4 (L3/T4; Ly4) Clone: YTS 191.1.2 Isotype: Rat IgG2b	Ascites	F, CT, IF, WB, IV	0.5 mL	CL012A
	Purified	F, CT, IF, WB, IV	250 µg	CL012AP
	APC	F	100 µg	CL012APC
	Biotin	F, WB	100 µg	CL012B
	Biotin	F, WB	300 µg	CL012B-3
	FITC	F	100 µg	CL012F
	FITC	F	300 µg	CL012F-3
	PE	F	50 µg	CL012PE
	PE	F	300 µg	CL012PE-3

Legend for Applications:

AC	Affinity Chromatography
AGG	Agglutination
C	Cryostat Sections
CT	Cytotoxicity Assay
D	Depletion
E	ELISA
EC	ELISA (Capture)
ED	ELISA (Detection)
F	Flow Cytometry
FN	Functional Assay
IC	Immunocytochemistry
ID	Immunodiffusion
IF	Immunofluorescence
IP	Immunoprecipitation
IV	<i>In vivo</i> Assay
N	Neutralization
P	Paraffin-Embedded Sections
R	RIA
WB	Western Blotting

! Please inquire about additional formats and azide free products.

Specificity	Format	Applications	Size	Cat #
CD4 (L3/T4; Ly4) Clone: CT-CD4 Isotype: Rat IgG2a	Purified	F	200 µg	CL013AP
	APC	F	100 µg	CL013APC
	Biotin	F	100 µg	CL013B
	Biotin	F	300 µg	CL013B-3
	FITC	F	100 µg	CL013F
	FITC	F	300 µg	CL013F-3
	PE	F	50 µg	CL013PE
	PE	F	300 µg	CL013PE-3
CD4 (L3/T4; Ly4) Clone: RM4-5 Isotype: Rat IgG2a	Purified	F	200 µg	CL016AP
	Biotin	F	100 µg	CL016B
	Biotin	F	300 µg	CL016B-3
	FITC	F	100 µg	CL016F
	FITC	F	300 µg	CL016F-3
	PE	F	50 µg	CL016PE
	PE	F	300 µg	CL016PE-3
	PE-Cy5	F	100 µg	CL016TC
CD5 Clone: 53-7.3 Isotype: Rat IgG2a	Purified	F	250 µg	CL8904AP
	Biotin	F	100 µg	CL8904B
	FITC	F	100 µg	CL8904F
	PE	F	50 µg	CL8904PE
CD5 Clone: YTS 121.5.2 Isotype: Rat IgG2b	Purified	F, WB, E	250 µg	CL8964AP
	Biotin	F, WB, E	100 µg	CL8964B
	FITC	F	100 µg	CL8964F
	PE	F	50 µg	CL8964PE
CD5 (Ly 1.1) Clone: 7-20.6/3 Isotype: Mouse IgG2a	Supernatant	F, CT	1 mL	CL8911
	Ascites	F, CT	0.5 mL	CL8911A
	Purified	F, CT	250 µg	CL8911AP
CD5 (Ly 1.2) Clone: CG16 Isotype: Mouse IgG2b	Ascites	CT	1 mL	CL8912A
	Purified	F, CT	250 µg	CL8912AP
	Biotin	F	100 µg	CL8912B
	Biotin	F	300 µg	CL8912B-3
	FITC	F	100 µg	CL8912F
	FITC	F	300 µg	CL8912F-3
	PE	F	50 µg	CL8912PE
	PE	F	300 µg	CL8912PE-3
CD8a (Ly 2; Lyt 2) Clone: YTS 169 AG 101 HL Isotype: Rat IgG2b	Ascites	F, CT, IV	0.5 mL	CL169A
	Purified	F, CT, IV	250 µg	CL169AP
	APC	F	100 µg	CL169APC
	Biotin	F	100 µg	CL169B
	Biotin	F	300 µg	CL169B-3
	FITC	F	100 µg	CL169F
	FITC	F	300 µg	CL169F-3
	Low Endotoxin	F, CT, IV	500 µg	CL169LE
	PE	F	50 µg	CL169PE
	PE	F	300 µg	CL169PE-3

Specificity	Format	Applications	Size	Cat #
CD8a (Ly 2; Lyt 2) Clone: CT-CD8a Isotype: Rat IgG2a	Purified	F, IV	200 µg	CL168AP
	APC	F	100 µg	CL168APC
	Biotin	F	100 µg	CL168B
	Biotin	F	300 µg	CL168B-3
	FITC	F	100 µg	CL168F
	FITC	F	300 µg	CL168F-3
	PE	F	50 µg	CL168PE
	PE	F	300 µg	CL168PE-3
	PE-Cy5	F	100 µg	CL168TC
CD8a (Ly 2.1) Clone: 49-31.1 Isotype: Mouse IgG3	Supernatant	CT	1 mL	CL8921
	Ascites	F, CT	0.5 mL	CL8921A
	Purified	F, CT	250 µg	CL8921AP
	Biotin	F	100 µg	CL8921B
	Biotin	F	300 µg	CL8921B-3
	FITC	F	100 µg	CL8921F
	FITC	F	300 µg	CL8921F-3
CD8a (Ly 2.2) Clone: AD4(15) Isotype: Mouse IgM	Supernatant	CT	1 mL	CL8922
	Ascites	F, CT	0.5 mL	CL8922A
	Purified	F, CT	250 µg	CL8922AP
	FITC	F	100 µg	CL8922F
	FITC	F	300 µg	CL8922F-3
CD8b (Ly 3.1) Clone: F9(1) Isotype: Mouse IgM	Supernatant	CT	1 mL	CL8931
	Ascites	F, CT	0.5 mL	CL8931A
CD8b (Ly 3) Clone: CT-CD8b Isotype: Rat IgG2a	Purified	F	200 µg	CL8938AP
	Biotin	F	100 µg	CL8938B
	Biotin	F	300 µg	CL8938B-3
	FITC	F	100 µg	CL8938F
	FITC	F	300 µg	CL8938F-3
	PE	F	50 µg	CL8938PE
	PE	F	300 µg	CL8938PE-3
CD11a (LFA-1a) Clone: IBL-6/2 Isotype: Rat IgG1	Purified	C, F, IP	250 µg	CL8985AP
	Biotin	F	100 µg	CL8985B
	Biotin	F	300 µg	CL8985B-3
	FITC	F	100 µg	CL8985F
	FITC	F	300 µg	CL8985F-3
CD11a (LFA-1a, Ly 15.2, strain polymorphism) Clone: 8-6.2 Isotype: Mouse IgG2a	Ascites	F	0.5 mL	CL8915A
	Purified	F	250 µg	CL8915AP
	Biotin	F	100 µg	CL8915B
	Biotin	F	300 µg	CL8915B-3
	FITC	F	100 µg	CL8915F
	FITC	F	300 µg	CL8915F-3
	PE	F	50 µg	CL8915PE
	PE	F	300 µg	CL8915PE-3

Legend for Applications:

- AC Affinity Chromatography
- AGG Agglutination
- C Cryostat Sections
- CT Cytotoxicity Assay
- D Depletion
- E ELISA
- EC ELISA (Capture)
- ED ELISA (Detection)
- F Flow Cytometry
- FN Functional Assay
- IC Immunocytochemistry
- ID Immunodiffusion
- IF Immunofluorescence
- IP Immunoprecipitation
- IV *In vivo* Assay
- N Neutralization
- P Paraffin-Embedded Sections
- R RIA
- WB Western Blotting

! Please inquire about additional formats and azide free products.

Specificity	Format	Applications	Size	Cat #
CD11a (LFA-1a, Ly 15) Clone: I21/7 Isotype: Rat IgG2a	Purified	F	200 µg	CL8916AP
	FITC	F	100 µg	CL8916F
	FITC	F	300 µg	CL8916F-3
	PE	F	50 µg	CL8916PE
	PE	F	300 µg	CL8916PE-3
CD11b (Mac-1; Ly 40; CR3a) Clone: M1/70.15 Isotype: Rat IgG2b	Ascites	F, C, P, IP, WB, FN	0.5 mL	CL8941A
	Purified	F, C, P, IP, WB, FN	250 µg	CL8941AP
	APC	F	100 µg	CL8941APC
	Biotin	F, C, P	100 µg	CL8941B
	Biotin	F, C, P	300 µg	CL8941B-3
	FITC	F, IF	100 µg	CL8941F
	FITC	F, IF	300 µg	CL8941F-3
	Low Endotoxin	F, C, P, IP, WB, FN	500 µg	CL8941LE
	PE	F	50 µg	CL8941PE
	PE	F	300 µg	CL8941PE-3
	PE-Cy5	F	100 µg	CL8941TC
CD11c Clone: N418 Isotype: Hamster IgG	Purified	F, IP, C	200 µg	CL8923AP
	Biotin	F, IP	100 µg	CL8923B
	Biotin	F, IP	300 µg	CL8923B-3
	PE	F	50 µg	CL8923PE
	PE	F	300 µg	CL8923PE-3
CD13 (Aminopeptidase N; gp 150) Clone: ER-BMDM1 Isotype: Rat IgG2a	Purified	F, C, P	100 µg	CL89141
CD18 (β2 Integrin; LFA-1β, CR3b) Clone: Rat IgG2a Isotype: C71/16	Purified	F, C, P	200 µg	CL8917AP
	FITC	F	100 µg	CL8917F
	FITC	F	300 µg	CL8917F-3
	PE	F	50 µg	CL8917PE
	PE	F	300 µg	CL8917PE-3
CD19 (B4) (pan B) Clone: 6D5 Isotype: Rat IgG2a	Purified	F	200 µg	CL8914AP
	FITC	F	100 µg	CL8914F
	FITC	F	300 µg	CL8914F-3
	PE	F	50 µg	CL8914PE
	PE	F	300 µg	CL8914PE-3
CD23 Clone: B3B4 Isotype: Rat IgG2a	Purified	F	200 µg	CL8910AP
	Biotin	F	100 µg	CL8910B
	Biotin	F	300 µg	CL8910B-3
	FITC	F	100 µg	CL8910F
	FITC	F	300 µg	CL8910F-3
	PE	F	50 µg	CL8910PE
	PE	F	300 µg	CL8910PE-3
	APC	F	100 µg	CL8945APC
CD24/HSA Clone: YBM 5.10.4 Isotype: Rat IgG2c	Purified	F, WB, E	250 µg	CL8949AP
	Biotin	F, WB, E	100 µg	CL8949B
	FITC	F	100 µg	CL8949F
	PE	F	50 µg	CL8949PE

Specificity	Format	Applications	Size	Cat #
CD25 (IL-2Ra, p55, Ly 43) Clone: PC61.5.3 Isotype: Rat IgG1	Ascites	F, C, IP, FN	0.5 mL	CL8925A
	Purified	F, C, IP, FN	250 µg	CL8925AP
	APC	F	100 µg	CL8625APC
	Biotin	F, C	100 µg	CL8925B
	Biotin	F, C	300 µg	CL8925B-3
	FITC	F	100 µg	CL8925F
	FITC	F	300 µg	CL8925F-3
	PE	F	50 µg	CL8925PE
	PE	F	300 µg	CL8925PE-3
	CD27 Clone: LG.3810 Isotype: Armenian Hamster IgG1	Purified	IHC, F, C (stimulating)	250 µg
Biotin		IHC, F, C (stimulating)	100 µg	CL8963B
FITC		F	100 µg	CL8963F
PE		F	50 µg	CL8963PE
CD28 (Tp-44) Clone: 37.51.1 Isotype: Hamster IgG	Purified	F, C, IP	200 µg	CL8928AP
	Biotin	F, C	100 µg	CL8928B
	Biotin	F, C	300 µg	CL8928B-3
	FITC	F	100 µg	CL8928F
	FITC	F	300 µg	CL8928F-3
	PE	F	50 µg	CL8928PE
CD31 (PECAM-1; pglIa; endoCAM) Clone: 390 Isotype: Rat IgG2a	Purified	F, C, IP, FN	200 µg	CL8930AP
	FITC	F	100 µg	CL8930F
	FITC	F	300 µg	CL8930F-3
	PE	F	50 µg	CL8930PE
	PE	F	300 µg	CL8930PE-3
CD32/16 Clone: KT1632 Isotype: Rat IgG2a	Purified	F	100 µg	CL9405AP
	Biotin	F	100 µg	CL9405B
	Biotin	F	300 µg	CL9405B-3
	FITC	F	100 µg	CL9405F
	FITC	F	300 µg	CL9405F-3
CD34 (mucosialin; sialomucin) Clone: MEC 14.7 Isotype: Rat IgG2a	Ascites	F, C, P, E, WB, IP	0.5 mL	CL8927A
	Purified	F, C, P, E, WB, IP	250 µg	CL8927AP
	Purified	F, C, P, E, WB, IP	500 µg	CL8927AP-2
	APC	F	100 µg	CL8927APC
	Biotin	F, C, P, E, WB	100 µg	CL8927B
	Biotin	F, C, P, E, WB	300 µg	CL8927B-3
	FITC	F, C, P, E, WB, IP	100 µg	CL8927F
	FITC	F, C, P, E, WB, IP	300 µg	CL8927F-3
	NA	F, C, P, E, WB, IP	1 mg	CL8927NA
	PE	F	50 µg	CL8927PE
CD38 (T10) Clone: 90 Isotype: Rat IgG2a	Purified	F, C	200 µg	CL8937AP
	Biotin	F	100 µg	CL8937B
	FITC	F	100 µg	CL8937F
	PE	F	50 µg	CL8937PE

Legend for Applications:

AC	Affinity Chromatography
AGG	Agglutination
C	Cryostat Sections
CT	Cytotoxicity Assay
D	Depletion
E	ELISA
EC	ELISA (Capture)
ED	ELISA (Detection)
F	Flow Cytometry
FN	Functional Assay
IC	Immunocytochemistry
ID	Immunodiffusion
IF	Immunofluorescence
IP	Immunoprecipitation
IV	<i>In vivo</i> Assay
N	Neutralization
P	Paraffin-Embedded Sections
R	RIA
WB	Western Blotting

! Please inquire about additional formats and azide free products.

Specificity	Format	Applications	Size	Cat #
CD40 (gp39 receptor) Clone: 3/23 Isotype: Rat IgG2a	Purified	F, C	200 µg	CL8939AP
	Biotin	F, C	100 µg	CL8939B
	Biotin	F, C	300 µg	CL8939B-3
	PE	F	50 µg	CL8939PE
	PE	F	300 µg	CL8939PE-3
sCD40 Ligand/ TRAP	Recombinant		25 µg	CL9251R
CD44 (Ly 24.2, Pgp-1.2) Clone: 5034-44.2 Isotype: Mouse IgG2a	Ascites	F, CT	0.5 mL	CL8924A
CD44 (Ly 24, Pgp-1) Clone: KM81 Isotype: Rat IgG2a	Purified	F, C	250 µg	CL8944AP
	APC	F	100 µg	CL8944APC
	Biotin	F, C	100 µg	CL8944B
	Biotin	F, C	300 µg	CL8944B-3
	FITC	F	100 µg	CL8944F
	FITC	F	300 µg	CL8944F-3
	PE	F	50 µg	CL8944PE
	PE	F	300 µg	CL8944PE-3
CD44 (Ly 24, Pgp-1) Clone: IM7.8.1 Isotype: Rat IgG2b	Purified	F, C, P, IP, E, WB	200 µg	CL8946AP
	Biotin	F, C, P, E, WB	100 µg	CL8946B
	Biotin	F, C, P, E, WB	300 µg	CL8946B-3
	FITC	F	100 µg	CL8946F
	FITC	F	300 µg	CL8946F-3
	PE	F	50 µg	CL8946PE
	PE	F	300 µg	CL8946PE-3
CD45 (LCA) Clone: IBL-5/25 Isotype: Rat IgG1	Purified	C, F, IP	250 µg	CL8988AP
	Biotin	F	100 µg	CL8988B
	Biotin	F	300 µg	CL8988B-3
	FITC	F	100 µg	CL8988F
	FITC	F	300 µg	CL8988F-3
	PE	F	50 µg	CL8988PE
	PE	F	300 µg	CL8988PE-3
CD45 (LCA) Clone: 30-F11 Isotype: Rat IgG2b	Purified	F, C, P	200 µg	CL9446AP
	APC	F	100 µg	CL9446APC
	FITC	F	100 µg	CL9446F
	FITC	F	300 µg	CL9446F-3
	PE	F	50 µg	CL9446PE
	PE	F	300 µg	CL9446PE-3
CD45R (Ly 5.2, T200) Clone: S-450-15.2 Isotype: Mouse IgG2a	Ascites	CT, WB, FN	0.5 mL	CL8952A

Specificity	Format	Applications	Size	Cat #
CD45R (Ly 5, B220) Clone: RA3-6B2 Isotype: Rat IgG2a	Ascites	F	100 µg	CL8990A
	Purified	F	100 µg	CL8990AP
	APC	F	100 µg	CL8990APC
	Biotin	F	100 µg	CL8990B
	Biotin	F	100 µg	CL8990B-3
	FITC	F	100 µg	CL8990F
	FITC	F	100 µg	CL8990F-3
	PE	F	100 µg	CL8990PE
	PE	F	100 µg	CL8990PE-3
	CD45RB (Ly 5, exon B) Clone: 16A Isotype: Rat IgG2a	Purified	F, C, IP, P	250 µg
Biotin		F, C, P	100 µg	CL8947B
Biotin		F, C	300 µg	CL8947B-3
FITC		F	100 µg	CL8947F
FITC		F	300 µg	CL8947F-3
PE		F	50 µg	CL8947PE
PE		F	300 µg	CL8947PE-3
PE-Cy5		F	100 µg	CL8947TC
CD45RC Clone: IBL-8 Isotype: Rat IgG1	Purified	C, F, IP	250 µg	CL8997AP
	Biotin	F	100 µg	CL8997B
	Biotin	F	300 µg	CL8997B-3
	FITC	F	100 µg	CL8997F
	FITC	F	300 µg	CL8997F-3
	PE	F	50 µg	CL8997PE
	PE	F	300 µg	CL8997PE-3
CD49d Clone: 428 Isotype: Rat IgG2a	Biotin	F	100 µg	CL8901B
	Biotin	F	300 µg	CL8901B-3
CD49d (a4 chain of VLA-4; LPAM-2) Clone: R1-2 Isotype: Rat IgG2b	Ascites	F, C, IP, FN	0.5 mL	CL8919A
	Purified	F, C, IP, FN	250 µg	CL8919AP
	Biotin	F, C	100 µg	CL8919B
	Biotin	F, C	300 µg	CL8919B-3
	FITC	F	100 µg	CL8919F
	FITC	F	300 µg	CL8919F-3
	PE	F	50 µg	CL8919PE
	PE	F	300 µg	CL8919PE-3
CD54 (ICAM-1) Clone: YN1/1.7.4 Isotype: Rat IgG2b	Purified	F	500 µg	CL8954AP
	Biotin	F	500 µg	CL8954B
	FITC	F	500 µg	CL8954F
	PE	F	100 µg	CL8954PE
CD55 (DAF) Clone: RIKO-3 Isotype: Hamster Ig	Purified	F, E, WB	250 µg	CL7540AP
	Biotin	F, E, WB	100 µg	CL7540B
	FITC	F	100 µg	CL7540F
	PE	F	50 µg	CL7540PE
CD56 (N-CAM) Clone: H28-123-16 Isotype: Rat IgG2a	Purified	C, IF, IP, WB, F	200 µg	CL10008AP

Legend for Applications:

AC	Affinity Chromatography
AGG	Agglutination
C	Cryostat Sections
CT	Cytotoxicity Assay
D	Depletion
E	ELISA
EC	ELISA (Capture)
ED	ELISA (Detection)
F	Flow Cytometry
FN	Functional Assay
IC	Immunocytochemistry
ID	Immunodiffusion
IF	Immunofluorescence
IP	Immunoprecipitation
IV	<i>In vivo</i> Assay
N	Neutralization
P	Paraffin-Embedded Sections
R	RIA
WB	Western Blotting

! Please inquire about additional formats and azide free products.

Specificity	Format	Applications	Size	Cat #
CD61 Clone: HMb3-1 Isotype: Armenian Hamster IgG	Purified	F	200 µg	CL8961AP
	PE	F	50 µg	CL8961PE
CD62L (L-selectin, LECAM-1, Ly 22) Clone: MEL-14 Isotype: Rat IgG2a	Ascites	F, C, IP, FN	0.5 mL	CL8918A
	Purified	F, C, IP, FN	250 µg	CL8918AP
	Biotin	F, C, E	100 µg	CL8918B
	Biotin	F, C, E	300 µg	CL8918B-3
	FITC	F	100 µg	CL8918F
	FITC	F	300 µg	CL8918F-3
	PE	F	50 µg	CL8918PE
	PE	F	300 µg	CL8918PE-3
CD69 (VEA, Early activation marker) Clone: H1.2F3 Isotype: Armenian Hamster IgG	Purified	F, IP	200 µg	CL8969AP
	Biotin	F	100 µg	CL8969B
	FITC	F	100 µg	CL8969F
	PE	F	50 µg	CL8969PE
CD70 Clone: TAN 1-7 Isotype: Rat IgG2a	Purified	E, F, IF	250 µg	CL8870AP
	Biotin	E, F, IF	100 µg	CL8870B
	FITC	F, IF	100 µg	CL8870F
	PE	F, IF	50 µg	CL8870PE
CD71 (Transferrin Receptor) Clone: R17217.1.4 Isotype: Rat IgG2a	Purified	F	200 µg	CL8971AP
	Biotin	F	100 µg	CL8971B
	Biotin	F	300 µg	CL8971B-3
	FITC	F	100 µg	CL8971F
	FITC	F	300 µg	CL8971F-3
	PE	F	50 µg	CL8971PE
CD71 (Transferrin Receptor) Clone: ER-MP21 Isotype: Rat IgG2a	PE	F	300 µg	CL8971PE-3
	Purified	F, C, P	100 µg	CL89144
CD72.1 (Lyb 2.1) Clone: CT-72.1 Isotype: Mouse IgG2a	Biotin	F	100 µg	CL8972B
	Biotin	F	300 µg	CL8972B-3
	FITC	F	100 µg	CL8972F
	FITC	F	300 µg	CL8972F-3
	PE	F	50 µg	CL8972PE
	PE	F	300 µg	CL8972PE-3
CD80 (B7-1, B7/BB1) Clone: RMMP-1 Isotype: Rat IgG2a	Purified	F	200 µg	CL8980AP
	PE	F	50 µg	CL8980PE
	PE	F	300 µg	CL8980PE-3
CD81 (TAPA-1) Clone: EAT 2 Isotype: Mouse IgG1	Purified	F	250 µg	CL8981AP
	Biotin	F	100 µg	CL8981B
	Biotin	F	300 µg	CL8981B-3
	FITC	F	100 µg	CL8981F
	FITC	F	300 µg	CL8981F-3
	PE	F	50 µg	CL8981PE
PE	F	300 µg	CL8981PE-3	

Specificity	Format	Applications	Size	Cat #
CD86 (B7-2, B70) Clone: RMMP-2 Isotype: Rat IgG2a	Purified	F	200 µg	CL8986AP
	PE	F	50 µg	CL8986PE
	PE	F	300 µg	CL8986PE-3
CD88 (C5a receptor) Clone: 20/70 Isotype: Rat IgG2b	Purified	F, IF, Blocking	250 µg	CL7588AP
	Biotin	F, IF, Blocking	100 µg	CL7588B
	FITC	F, IF, Blocking	100 µg	CL7588F
	No Azide	F, IF, Blocking	1 mg	CI7588NA
	PE	F, IF, Blocking	50 µg	CL7588PE
CD90 (Thy 1.1) Clone: OX-7 Isotype: Mouse IgG1	Ascites	F, IP, C, FN	0.5 mL	CL005A
	Purified	F, IP, C, FN	250 µg	CL005AP
	Purified	F, IP, C, FN	500 µg	CL005AP-2
	Biotin	F, C	100 µg	CL005B
	Biotin	F, C	500 µg	CL005B-5
	FITC	F	100 µg	CL005F
	FITC	F	500 µg	CL005F-5
	Low Endotoxin	F, IP, C, FN	500 µg	CL005LE
	Low Endotoxin	F, IP, C, FN	1 mg	CL005LE-2
	PE	F	50 µg	CL005PE
	PE	F	200 µg	CL005PE-4
	CD90 (Thy 1.1) Clone: 7C8 BB3 Isotype: Mouse IgM	Ascites	IF	0.5 mL
CD90 (Thy 1.2) Clone: 5a-8 Isotype: Mouse IgG2b	Supernatant	CT	1 mL	CL8600
	Ascites	F, CT, C	0.5 mL	CL8600A
	Purified	F, CT, C	250 µg	CL8600AP
	APC	F	100 µg	CL8600APC
	Biotin	F, C	100 µg	CL8600B
	Biotin	F, C	300 µg	CL8600B-3
	FITC	F, IF	100 µg	CL8600F
	FITC	F, IF	300 µg	CL8600F-3
	PE	F	50 µg	CL8600PE
	PE	F	300 µg	CL8600PE-3
CD90 (Thy 1) Clone: IBL-1 Isotype: Rat IgG1	Purified	C, F, IP	250 µg	CL8610AP
	Biotin	F	100 µg	CL8610B
	Biotin	F	300 µg	CL8610B-3
	FITC	F	100 µg	CL8610F
	FITC	F	300 µg	CL8610F-3
	PE	F	50 µg	CL8610PE
	PE	F	300 µg	CL8610PE-3
CD90 (Thy 1.1) Clone: T11D7e Isotype: Mouse IgM	Supernatant	CT	5 mL	CL8700
	Ascites	CT	0.5 mL	CL8700A

Legend for Applications:

AC	Affinity Chromatography
AGG	Agglutination
C	Cryostat Sections
CT	Cytotoxicity Assay
D	Depletion
E	ELISA
EC	ELISA (Capture)
ED	ELISA (Detection)
F	Flow Cytometry
FN	Functional Assay
IC	Immunocytochemistry
ID	Immunodiffusion
IF	Immunofluorescence
IP	Immunoprecipitation
IV	<i>In vivo</i> Assay
N	Neutralization
P	Paraffin-Embedded Sections
R	RIA
WB	Western Blotting

! Please inquire about additional formats and azide free products.

Specificity	Format	Applications	Size	Cat #
CD94 Clone: 15F.18D1 Isotype: Rat IgG1k	Purified	F, E, IF	250 µg	CL8950AP
	FITC	F, E, IF	100 µg	CL8950F
	PE	F, E, IF	50 µg	CL8950PE
CD105 (Endoglin) Clone: MJ7/18 Isotype: Rat IgG2a,k	Purified	WB, IP, IHC, F	250 µg	CL8983AP
	Biotin	WB, IP, IHC, F	100 µg	CL8983B
	FITC	WB, IP, IHC, F	100 µg	CL8983F
	PE	WB, IP, IHC, F	50 µg	CL8983PE
CD106 (VCAM-1) Clone: MK2 Isotype: Rat IgG1	Purified	F, C	200 µg	CL8955AP
	Biotin	F, C	100 µg	CL8955B
	Biotin	F, C	300 µg	CL8955B-3
CD117 (c-kit) Clone: 2B8 Isotype: Rat IgG2b	Purified	F	200 µg	CL8932AP
	Biotin	F	100 µg	CL8932B
	Biotin	F	300 µg	CL8932B-3
	PE	F	50 µg	CL8932PE
	PE-Cy5	F	100 µg	CL8932TC
CD117 (c-kit) Clone: ACK4 Isotype: Rat IgG2a	Purified	E, IF, IHC, WB, IP, F	250 µg	CL8936AP
	Purified	E, IF, IHC, WB, IP, F	500 µg	CL8936AP-2
	Biotin	F	100 µg	CL8936B
	Biotin	F	300 µg	CL8936B-3
	FITC	F	100 µg	CL8936F
	FITC	F	300 µg	CL8936F-3
	PE	F	50 µg	CL8936PE
	PE	F	300 µg	CL8936PE-3
CD120a (TNF-R, p55) Clone: HM104 Isotype: Rat IgG2a	Purified	F	100 µg	CL8957AP
	PE	F	50 µg	CL8957PE
CD120b (TNF-R Type II, p75) Clone: TR75-54.7 Isotype: Hamster IgG	Purified	F	100 µg	CL8968AP
CD122 (IL-2R β) Clone: TM-B1 Isotype: Rat IgG2b	Purified	F, IP, N	200 µg	CL8951AP
	Biotin	F, IP	100 µg	CL8951B
	Biotin	F, IP	300 µg	CL8951B-3
CD134 (OX-40 Antigen) Clone: OX-86 Isotype: Rat IgG1	Purified	F	250 µg	CL8967AP
	Biotin	F	100 µg	CL8967B
	Biotin	F	300 µg	CL8967B-3
	FITC	F	100 µg	CL8967F
	FITC	F	300 µg	CL8967F-3
	PE	F	50 µg	CL8967PE
	PE	F	300 µg	CL8967PE-3
CD134L/OX40L Clone: OX89 Isotype: Rat IgG1	Purified	F, IHC, FN	250 µg	CL8966AP
	Biotin	F, IHC	100 µg	CL8966B
	FITC	F	100 µg	CL8966F
	PE	F, IHC, FN	50 µg	CL8966PE

Specificity	Format	Applications	Size	Cat #
CD147 Clone: OX114 Isotype: Rat IgG1	Purified	F, WB, IHC	250 µg	CL8975AP
	Biotin	F	100 µg	CL8975B
	FITC	F	100 µg	CL8975F
	PE	F	50 µg	CL8975PE
CD153 (CD30L) Clone: RM153 Isotype: Rat IgG2b	Purified	F, FN	200 µg	CL8953AP
	Biotin	F	100 µg	CL8953B
	Biotin	F	300 µg	CL8953B-3
	PE	F	50 µg	CL8953PE
	PE	F	300 µg	CL8953PE-3
CD157 Clone: KT157 Isotype: Rat IgG2c	Purified	F	250 µg	CL8984AP
	FITC	F	100 µg	CL8984F
CD160 Clone: CNX46-3 Isotype: Mouse IgG2bk	Purified	F, WB	250 µg	CL8989AP
	APC	F	100 µg	CL8989APC
	Biotin	F, WB	100 µg	CL8989B
	FITC	F, WB	100 µg	CL8989F
	PE	F, WB	50 µg	CL8989PE
CD161 (NK1.1) Clone: PK136 Isotype: Mouse IgG2a	Purified	F	250 µg	CL8994AP
	APC	F	100 µg	CL8994APC
	Biotin	F	100 µg	CL8994B
	Biotin	F	300 µg	CL8994B-3
	PE	F	50 µg	CL8994PE
	PE	F	300 µg	CL8994PE-3
CD200 Clone: OX90 Isotype: Rat IgG2a	Purified	F, IHC, E	250 µg	CL8995AP
	Biotin	F	100 µg	CL8995B
	FITC	F	100 µg	CL8995F
	PE	F	50 µg	CL8995PE
CD200R Clone: OX110 Isotype: Rat IgG1	Purified	F	250 µg	CL8996AP
	Biotin	F	100 µg	CL8996B
	FITC	F	100 µg	CL8996F
	PE	F	50 µg	CL8996PE
CD205 (surface marker) (DEC-205) Clone: NLDC-145 Isotype: Rat IgG2a	Purified	F, C, P	100T	CL89145
	Biotin	F, C, P	100 µg	CL89145B
	FITC	F	100 µg	CL89145F
	PE	F	50 µg	CL89145PE
CD226 Clone: 15F10E5 Isotype: Rat IgMk	Purified	F	250 µg	CL8998AP
	FITC	F	100 µg	CL8998F
CD279 (PD-1) Clone: J43 Isotype: Hamster IgG	Purified	F	250 µg	CL8982AP
	Biotin	F	100 µg	CL8982B
	FITC	F	100 µg	CL8982F
	PE	F	50 µg	CL8982PE
Collagen Type I Isotype: Rabbit IgG	Purified	IFA, IHC, E, (SP)RIA, IB/WB	0.5 mL	CL50151AP
Collagen Type II Isotype: Rabbit IgG	Purified	IFA, IHC(p), E, (SP)RIA, IB/WB	0.5 mL	CL50251AP

Legend for Applications:

AC	Affinity Chromatography
AGG	Agglutination
C	Cryostat Sections
CT	Cytotoxicity Assay
D	Depletion
E	ELISA
EC	ELISA (Capture)
ED	ELISA (Detection)
F	Flow Cytometry
FN	Functional Assay
IC	Immunocytochemistry
ID	Immunodiffusion
IF	Immunofluorescence
IP	Immunoprecipitation
IV	<i>In vivo</i> Assay
N	Neutralization
P	Paraffin-Embedded Sections
R	RIA
WB	Western Blotting

Please inquire about additional formats and azide free products.

Specificity	Format	Applications	Size	Cat #
Collagen Type IV Isotype: Rabbit IgG	Purified	IFA, IHC(p), E, (SP) RIA, IB/WB	0.5 mL	CL50451AP
CTACK (CCL27)	Recombinant		20 µg	CL9234R
CTLA-4 Isotype: Rabbit IgG	Purified	N, E, WB	50 µg	CL9158AP
	Biotin	E	25 µg	CL9158B
CXCL16 Isotype: Goat IgG	Purified	N, E, WB	50 µg	CL9194AP
	Biotin	E	25 µg	CL9194B
CXCL16 Isotype: Rabbit IgG	Recombinant		25 µg	CL9237R
DAF (CD55) Clone: RIKO-3 Isotype: Hamster Ig	Purified	F, E, WB	250 µg	CL7540AP
	Biotin	F, E, WB	100 µg	CL7540B
	FITC	F	100 µg	CL7540F
	PE	F	50 µg	CL7540PE
Dendritic Cells (surface marker) (CD205) Clone: NLDC-145 Isotype: Rat IgG2a	Purified	F, C, P	100T	CL89145
	Biotin	F, C, P	100 µg	CL89145B
	FITC	F	100 µg	CL89145F
	PE	F	50 µg	CL89145PE
Dendritic Cells (cytoplasmic marker) Clone: MIDC-8 Isotype: Rat IgG2a	Purified	C	100 µg	CL89148
DO11.10 TCR Clone: KJ1-26 Isotype: Mouse IgG2a	Purified	F	200 µg	CL7214AP
	APC	F	100 µg	CL7214APC
	Biotin	F	100 µg	CL7214B
	FITC	F	100 µg	CL7214F
	PE	F	50 µg	CL7214PE
	PE-Cy5	F	100 µg	CL7214TC
EGF (Epidermal Growth Factor) Isotype: Goat IgG	Purified	N, E, WB	50 µg	CL9190AP
	Biotin	E	25 µg	CL9190B
	Recombinant		500 µg	CL9205R
Eotaxin-2 (CCL24) Isotype: Goat IgG	Purified	N, E, WB	50 µg	CL9191AP
	Biotin	E	25 µg	CL9191B
	Recombinant		20 µg	CL9206R
Erk 1,2 Isotype: Rabbit Clonal IgG	Purified	WB, ELISA, IP, IHC	100 µL	CL2821AP
phospho-Erk 1,2 Isotype: Rabbit Clonal IgG	Purified	WB, ELISA, IP, IHC	100 µL	CL2822AP
Erythroid Cells (Ly-76) Clone: TER-119 Isotype: Rat IgG2b	Purified	F, C, IP, WB	250 µg	CL8926AP
	Biotin	F, C, IP	100 µg	CL8926B
	Biotin	F, C, IP	300 µg	CL8926B-3
	FITC	F	100 µg	CL8926F
	FITC	F	300 µg	CL8926F-3
	PE	F	50 µg	CL8926PE
	PE	F	300 µg	CL8926PE-3
	Low Endotoxin	F, C, IP, WB	500 µg	CL8926LE

Specificity	Format	Applications	Size	Cat #
Exodus-2 (SLC, 6Ckine, TCA-4, CCL21) Isotype: Rabbit IgG	Purified	N, E, WB	50 µg	CL9170AP
	Biotin	E	25 µg	CL9170B
F4/80 Antigen-Pan Macrophage Clone: BM8 Isotype: Rat IgG2a	Purified	C, P, F	100 µg	CL89170AP
	Recombinant		20 µg	CL9207R
F4/80 Antigen-Pan Macrophage Clone: C1:A3-1 Isotype: Rat IgG2b	Purified	F	200 µg	CL8940AP
	Biotin	F	100 µg	CL8940B
	Biotin	F	300 µg	CL8940B-3
	FITC	F	100 µg	CL8940F
	FITC	F	300 µg	CL8940F-3
	PE	F	50 µg	CL8940PE
	PE	F	300 µg	CL8940PE-3
Fc III/II Receptors (CD32/16) Clone: KT1632 Isotype: Rat IgG2a	Purified	F	100 µg	CL9405AP
	Biotin	F	100 µg	CL9405B
	Biotin	F	300 µg	CL9405B-3
	FITC	F	100 µg	CL9405F
	FITC	F	300 µg	CL9405F-3
FGF-9 (Fibroblast Growth Factor-9) Isotype: Rabbit IgG	Purified	N, E, WB	50 µg	CL9166AP
	Biotin	E	25 µg	CL9166B
	Recombinant		10 µg	CL9230R
Fibronectin Isotype: Rabbit IgG	Purified	IFA, IHC, E, (SP)RIA, IB/WB	0.5 mL	CL54951AP
Flt-3 Ligand Isotype: Rabbit IgG	Recombinant		10 µg	CL9240R
FoxP3 Clone: 3G3 Isotype: Mouse IgG1k	Purified	F	200 µg	CL8900AP
	Biotin	F	100 µg	CL8900B
	Biotin	F	300 µg	CL8900B-3
	FITC	F	100 µg	CL8900F
	FITC	F	300 µg	CL8900F-3
	PE	F	50 µg	CL8900PE
PE	F	300 µg	CL8900PE-3	
gAcrp30	Recombinant		25 µg	CL9249R
Galectin-3 (Gal-3, Mac-2) Clone: M3/38 Isotype: Rat IgG2a	Purified	F, IF, C, E, P, WB	100 µg	CL8942AP
	Biotin	F, IF, C, E, P, WB	100 µg	CL8942B
	Biotin	F, IF, C, E, P, WB	300 µg	CL8942B-3
	FITC	F, IF	100 µg	CL8942F
	FITC	F, IF	300 µg	CL8942F-3
	Low Endotoxin	F, IF, C, E, P, WB	500 µg	CL8942LE

Legend for Applications:

- AC Affinity Chromatography
- AGG Agglutination
- C Cryostat Sections
- CT Cytotoxicity Assay
- D Depletion
- E ELISA
- EC ELISA (Capture)
- ED ELISA (Detection)
- F Flow Cytometry
- FN Functional Assay
- IC Immunocytochemistry
- ID Immunodiffusion
- IF Immunofluorescence
- IP Immunoprecipitation
- IV *In vivo* Assay
- N Neutralization
- P Paraffin-Embedded Sections
- R RIA
- WB Western Blotting

! Please inquire about additional formats and azide free products.

Specificity	Format	Applications	Size	Cat #
Gamma/Delta TCR Clone: GL3 Isotype: Hamster IgG	Ascites	F, C	0.5 mL	CL7201A
	Purified	F, C	250 µg	CL7201AP
	Biotin	F, C	100 µg	CL7201B
	Biotin	F, C	300 µg	CL7201B-3
	FITC	F	100 µg	CL7201F
	FITC	F	300 µg	CL7201F-3
	PE	F	50 µg	CL7201PE
	PE	F	300 µg	CL7201PE-3
	PE-Cy5	F	100 µg	CL7201TC
G-CSF (Granulocyte Colony Stimulating Factor) Isotype: Rabbit IgG	Purified	N, E, WB	50 µg	CL9172AP
	Biotin	E	25 µg	CL9172B
	Recombinant		10 µg	CL9208R
Ghrelin Clone: Polyclonal Isotype: Rabbit IgG	Purified	E, WB	100 µg	CL8818AP
GITR Clone: YGIR765.4.16 Isotype: Rat IgG2b	Purified	FN, IV, IHC, F	250 µg	CL8977AP
	Biotin	F	100 µg	CL8977B
	FITC	F	100 µg	CL8977F
	PE	F	50 µg	CL8977PE
GITR-L Clone: YGL 386 Isotype: Rat IgG1	Purified	F	200 µg	CL8978AP
	PE	F	50 µg	CL8978PE
GM-CSF (Granulocyte Macrophage Colony Stimulating Factor) Isotype: Rabbit IgG	Purified	N,E, WB	50 µg	CL9165AP
	Biotin	E	25 µg	CL9165B
	Recombinant		20 µg	CL9300R
Granulocytes (Gr-1, Ly 6G) Clone: RB6-8C5 Isotype: Rat IgG2b	Ascites	F, CT, WB, P, C	0.5 mL	CL8991A
	Purified	F, CT, WB, P, C	250 µg	CL8991AP
	APC	F	100 µg	CL8991APC
	Biotin	F, WB, P, C	100 µg	CL8991B
	Biotin	F, WB, P, C	300 µg	CL8991B-3
	FITC	F	100 µg	CL8991F
	FITC	F	300 µg	CL8991F-3
	PE	F	50 µg	CL8991PE
GRO-a (KC/GRO-alpha) Isotype: Rabbit IgG	Purified	N, E, WB	50 µg	CL9179AP
	Recombinant		20 µg	CL9214R
	Biotin	E	25 µg	CL9179B
H-2Db Clone: B22-249.R1 Isotype: Mouse IgG2a	Ascites	CT	0.5 mL	CL9001A
	Purified	CT	250 µg	CL9001AP
	FITC	CT	100 µg	CL9001F
H-2Db Clone: 28-11-5S Isotype: Mouse IgM	Ascites	CT, F	0.5 mL	CL9020A

Specificity	Format	Applications	Size	Cat #
H-2Dd Clone: 34-5-8S Isotype: Mouse IgG2a	Ascites	F, CT, C	0.5 mL	CL9009A
	Purified	F, CT, C	250 µg	CL9009AP
	Biotin	F	100 µg	CL9009B
	FITC	F	100 µg	CL9009F
	PE	F	50 µg	CL9009PE
H-2Dk Clone: CTDk Isotype: Mouse IgM	Purified	F	200 µg	CL9003AP
H-2Dk Clone: 15-5-5 Isotype: Mouse IgG2a	Purified	F	200 µg	CL9017AP
	Biotin	F	100 µg	CL9017B
	FITC	F	100 µg	CL9017F
H-2KbDb Clone: 5041.16.1 Isotype: Mouse IgG2a	Ascites	F, CT	0.5 mL	CL9007A
	Purified	F, CT	250 µg	CL9007AP
	Biotin	F	100 µg	CL9007B
	FITC	F	100 µg	CL9007F
	PE	F	50 µg	CL9007PE
H-2Kd Clone: 31-3-4S Isotype: Mouse IgM	Ascites	CT, F	0.5 mL	CL9008A
	Purified	CT, F	250 µg	CL9008A
H-2KdDd Clone: 34-7-23S Isotype: Mouse IgM	Ascites	CT	0.5 mL	CL9010A
	Purified	CT	250 µg	CL9010AP
H-2KdDd Clone: 34-1-2S Isotype: Mouse IgG2a	Ascites	F, CT	0.5 mL	CL9023A
	Purified	F, CT	250 µg	CL9023AP
	Biotin	F	100 µg	CL9023B
	FITC	F	100 µg	CL9023F
	PE	F	50 µg	CL9023PE
H-2Kk Clone: H100-5-28 Isotype: Mouse IgG2a	Ascites	CT	0.5 mL	CL9004A
	Purified	F	250 µg	CL9004AP
	Biotin	F	100 µg	CL9004B
	FITC	F	100 µg	CL9004F
	PE	F	50 µg	CL9004PE
H-2KkDk Clone: H100-30/23 Isotype: Mouse IgG2b	Ascites	CT	0.5 mL	CL9006A
H-2Ld Clone: 30-5-7S Isotype: Mouse IgG2a	Ascites	CT	0.5 mL	CL9011A
	Purified	CT, F, FN	250 µg	CL9011AP
	Biotin	CT, F	100 µg	CL9011B
	FITC	CT, F	100 µg	CL9011F
	PE	F	50 µg	CL9011PE
Histocytes (MMGL) Clone: ER-MP23 Isotype: Rat IgG2a	Purified	F, C, FN	100 µg	CL89147
Ia (B cells) Isotype: Polyclonal Mouse	Alloantiserum	CT	1 mL	CL8701
	FITC	F	0.5 mL	CL8701F

Legend for Applications:

AC	Affinity Chromatography
AGG	Agglutination
C	Cryostat Sections
CT	Cytotoxicity Assay
D	Depletion
E	ELISA
EC	ELISA (Capture)
ED	ELISA (Detection)
F	Flow Cytometry
FN	Functional Assay
IC	Immunocytochemistry
ID	Immunodiffusion
IF	Immunofluorescence
IP	Immunoprecipitation
IV	<i>In vivo</i> Assay
N	Neutralization
P	Paraffin-Embedded Sections
R	RIA
WB	Western Blotting

! Please inquire about additional formats and azide free products.

Specificity	Format	Applications	Size	Cat #
I-Ab Clone: 28-16-8S Isotype: Mouse IgM	Ascites	F, CT	0.5 mL	CL8702A
	Purified	F, CT	250 µg	CL8702AP
	Biotin	F	100 µg	CL8702B
	FITC	F	100 µg	CL8702F
	PE	F	50 µg	CL8702PE
I-Ab Clone: 25-5-16S Isotype: Mouse IgM	Ascites	F, CT	0.5 mL	CL8704A
	Purified	F, CT	250 µg	CL8704AP
	Biotin	F	100 µg	CL8704B
	FITC	F	100 µg	CL8704F
I-Ab Clone: B17-123.R2 Isotype: Mouse IgM	Ascites	CT	0.5 mL	CL9015A
I-Ab,d Clone: 25-9-17S Isotype: Mouse IgG2a	Ascites	F, CT	0.5 mL	CL8712A
	Biotin	F	100 µg	CL8712B
	FITC	F	100 µg	CL8712F
	PE	F	50 µg	CL8712PE
I-Ab,s Clone: OX-3 Isotype: Mouse IgG1	Ascites	F, IP, C	0.5 mL	CL008A
	Purified	F, IP, C	250 µg	CL008AP
	Purified	F, IP, C	500 µg	CL008AP-2
	Biotin	F, C	100 µg	CL008B
	Biotin	F, C	500 µg	CL008B-5
	FITC	F	100 µg	CL008F
	FITC	F	500 µg	CL008F-5
	PE	F	50 µg	CL008PE
	PE	F	200 µg	CL008PE-4
I-Ad Clone: 34-5-3S Isotype: Mouse IgG2a	Ascites	F, CT	0.5 mL	CL8713A
	Biotin	F	100 µg	CL8713B
	FITC	F	100 µg	CL8713F
	PE	F	50 µg	CL8713PE
I-Ak Clone: 14V.18 Isotype: Mouse IgG2a	Ig fraction	F, CT	1 mL	CL8709A
	Purified	F, CT	250 µg	CL8709AP
	Biotin	F	100 µg	CL8709B
	FITC	F	100 µg	CL8709F
	PE	F	50 µg	CL8709PE
I-Ak Clone: H116-32.R5 Isotype: Mouse IgG2b	Ascites	CT, IF	0.5 mL	CL9016A
I-Ak,s Clone: OX-6 Isotype: Mouse IgG1	Ascites	F, C, P,WB	0.5 mL	CL010A
	Purified	F, C, P,WB	250 µg	CL010AP
	Purified	F, C, P,WB	500 µg	CL010AP-2
	Biotin	F, C, P,WB	100 µg	CL010B
	Biotin	F, C, P,WB	500 µg	CL010B-5
	FITC	F	100 µg	CL010F
	FITC	F	500 µg	CL010F-5
	PE	F	50 µg	CL010PE
	PE	F	200 µg	CL010PE-4

Specificity	Format	Applications	Size	Cat #
I-AkEk Clone: A303 Isotype: Mouse IgG2a	Ig fraction	CT	1 mL	CL8707A
I-Ap Clone: 7-16.17 Isotype: Mouse IgG2a	Ig fraction	F, CT	1 mL	CL8708A
	Purified	F, CT	250 µg	CL8708AP
	Biotin	F	100 µg	CL8708B
	FITC	F	100 µg	CL8708F
	PE	F	50 µg	CL8708PE
I-Ed Clone: 34-1-4S Isotype: Mouse IgM	Ascites	CT	1 mL	CL8706A
I-Ek Clone: 14-4-4S Isotype: Mouse IgG2a	Supernatant	CT, FN	5 mL	CL8705
	Ascites	F, CT, IP	0.5 mL	CL8705A
	Purified	F, CT	250 µg	CL8705AP
	Biotin	F	100 µg	CL8705B
	FITC	F	100 µg	CL8705F
	PE	F	50 µg	CL8705PE
IFN-αA (Interferon alpha A) Isotype: Rabbit IgG	Purified	N, E, WB, C, IP	2 x 10 ⁴ U	CL9140AP
	Recombinant		1 x 10 ⁵ U	CL9330R
IFN-β (Interferon Beta) Isotype: Rabbit IgG	Purified	N, E, WB, C, IP	2 x 10 ⁴ U	CL9141AP
	Recombinant		1 x 10 ⁵ U	CL9331R
IFN-Gamma (Interferon Gamma) Isotype: Rabbit IgG	Purified	N, E, WB	50 µg	CL9173AP
	Biotin	E	25 µg	CL9173B
	Recombinant		100 µg	CL9209R
IFN-β (Interferon Beta) Isotype: Rabbit IgG	Purified	N, E, WB, C, IP	2 x 10 ⁴ U	CL9141AP
	Recombinant		1 x 10 ⁵ U	CL9331R
IGF-1 (Insulin-like Growth Factor-1) Isotype: Goat IgG	Purified	N, E, WB	50 µg	CL9588AP
	Biotin	E	25 µg	CL9588B
	Recombinant		50 µg	CL9210R
IgG (Polyclonal Rabbit) Isotype: Rabbit IgG	Antiserum	IP, ID	2 mL	CLA3340
	IgG Fraction	IP, ID	20 mg	CLAG3340
	FITC	IF, F	3 mg	CLFAG3340
IgM Clone: Ig8 Isotype: Rat IgG	Ascites	IP, IF, E	0.5 mL	CL6005A
IL-1α Isotype: Rabbit IgG	Purified	N, E, WB	50 µg	CL9174AP
	Biotin	E	25 µg	CL9174B
	Recombinant		10 µg	CL9211R
IL-1β Isotype: Rabbit IgG	Purified	N, E, WB	50 µg	CL9151AP
	Biotin	E	25 µg	CL9151B
	Recombinant		10 µg	CL9301BR

Legend for Applications:

AC	Affinity Chromatography
AGG	Agglutination
C	Cryostat Sections
CT	Cytotoxicity Assay
D	Depletion
E	ELISA
EC	ELISA (Capture)
ED	ELISA (Detection)
F	Flow Cytometry
FN	Functional Assay
IC	Immunocytochemistry
ID	Immunodiffusion
IF	Immunofluorescence
IP	Immunoprecipitation
IV	<i>In vivo</i> Assay
N	Neutralization
P	Paraffin-Embedded Sections
R	RIA
WB	Western Blotting

! Please inquire about additional formats and azide free products.

Specificity	Format	Applications	Size	Cat #	
IL-2 Isotype: Rabbit IgG	Purified	N, E, WB	50 µg	CL9152AP	
	Biotin	E	25 µg	CL9152B	
	Recombinant		20 µg	CL9302R	
IL-3 Isotype: Rabbit IgG	Purified	N, E, WB	50 µg	CL9153AP	
	Biotin	E	25 µg	CL9153B	
	Recombinant		10 µg	CL9303R	
IL-4 Isotype: Rabbit IgG	Purified	N, E, WB	50 µg	CL9154AP	
	Biotin	E	25 µg	CL9154B	
	Recombinant		10 µg	CL9304R	
IL-6 Isotype: Rabbit IgG	Purified	N, E, WB	50 µg	CL9156AP	
	Biotin	E	25 µg	CL9156B	
	Recombinant		10 µg	CL9306R	
IL-7 Isotype: Rabbit IgG	Purified	N, E, WB	50 µg	CL9157AP	
	Biotin	E	25 µg	CL9157B	
	Recombinant		10 µg	CL9307R	
IL-9 Isotype: Rabbit IgG	Purified	N, E, WB	50 µg	CL9159AP	
	Biotin	E	25 µg	CL9159B	
	Recombinant		10 µg	CL9309R	
IL-10 Isotype: Rabbit IgG	Purified	N, E, WB	50 µg	CL9160AP	
	Biotin	E	25 µg	CL9160B	
	Recombinant		10 µg	CL9310R	
IL-12 Isotype: Goat IgG	Purified	N, E, WB	50 µg	CL9162AP	
	Biotin	E	25 µg	CL9162B	
	Recombinant		10 µg	CL9312R	
IL-13 Isotype: Rabbit IgG	Purified	N, E, WB	50 µg	CL9192AP	
	Biotin	E	25 µg	CL9192B	
	Recombinant		10 µg	CL9313R	
IL-15	Recombinant		10 µg	CL9315R	
IL-18BP (Interleukin-18 Binding Protein) Isotype: Goat IgG	Purified	N, E, WB	50 µg	CL9176AP	
	Biotin	E	25 µg	CL9176B	
IL-22	Recombinant		10 µg	CL9322R	
iNOS Isotype: Rabbit Clonal IgG	Purified	WB, ELISA, IP, IHC	100 µL	CL2812AP	
	IP-10 (Interferon Gamma Inducible CXCL10) Isotype: Rabbit IgG	Purified	N, E, WB	50 µg	CL9177AP
		Biotin	E	25 µg	CL9177B
	Recombinant		25 µg	CL9212R	
I-Tac (Interferon Inducible T cell alpha chemoattractant, CXCL11)	Recombinant		20 µg	CL9238R	
	Laminin Isotype: Rabbit IgG	Purified	IFA, IHC(p), E, (SP)RIA (tested)	0.5 mL	CL54851AP

Specificity	Format	Applications	Size	Cat #
Leptin (Anti-Obesity Protein) Isotype: Rabbit IgG	Purified	N, E, WB	50 µg	CL9168AP
	Purified	N, E, WB	50 µg	CL9168AP
	Biotin	E	25 µg	CL9168B
	Biotin	E	25 µg	CL9168B
	Recombinant		1 mg	CL9231R
LIGHT	Recombinant		20 µg	CL9244R
LIX (Lipopolysaccharide-Induced CXC Chemokine, CXCL5) Isotype: Rabbit IgG	Purified	N, E, WB	50 µg	CL9181AP
	Biotin	E	25 µg	CL9181B
	Recombinant		20 µg	CL9216R
Ly 6A.2 (Ly 28.2) Clone: 5041-8.7 Isotype: Mouse IgG2a	Ascites	CT	0.5 mL	CL8905A
Ly 6A/E (Sca-1) Clone: D7 Isotype: Rat IgG2a	Purified	F	200 µg	CL8948AP
	Biotin	F	100 µg	CL8948B
	Biotin	F	300 µg	CL8948B-3
	PE	F	50 µg	CL8948PE
	PE	F	300 µg	CL8948PE-3
Ly 6A.2/6E.1 (Sca-1) Clone: CT-6A/6E Isotype: Rat IgG2b	Purified	F	200 µg	CL8934AP
	PE	F	50 µg	CL8934PE
	PE	F	300 µg	CL8934PE-3
Ly 6C.2 (Ly 28.2) Clone: 5075-3.6 Isotype: Mouse IgG2b	Ascites	CT	0.5 mL	CL8906A
Lymphocytes (Polyclonal Rabbit) Isotype: Rabbit Sera	Serum	CT	1 mL	CL2201
	Serum	CT	5 mL	CL2205
Mac-1; Ly 40; CR3a (CD11b) Clone: M1/70.15 Isotype: Rat IgG2b	Ascites	F, C, P, IP, WB, FN	0.5 mL	CL8941A
	Purified	F, C, P, IP, WB, FN	250 µg	CL8941AP
	Biotin	F, C, P	100 µg	CL8941B
	Biotin	F, C, P	300 µg	CL8941B-3
	FITC	F	100 µg	CL8941F
	FITC	F	300 µg	CL8941F-3
	PE	F	50 µg	CL8941PE
	PE	F	300 µg	CL8941PE-3
	PE-Cy5	F	100 µg	CL8941TC
Mac-2 (Gal-3, Galectin-3) Clone: M3/38 Isotype: Rat IgG2a	Purified	F, IF, C, E, P, WB	100 µg	CL8942AP
	Biotin	F, IF, C, E, P, WB	100 µg	CL8942B
	Biotin	F, IF, C, E, P, WB	300 µg	CL8942B-3
	FITC	F, IF	100 µg	CL8942F
	FITC	F, IF	300 µg	CL8942F-3
	Low Endotoxin	F, IF, C, E, P, WB	500 µg	CL8942LE

Legend for Applications:

AC	Affinity Chromatography
AGG	Agglutination
C	Cryostat Sections
CT	Cytotoxicity Assay
D	Depletion
E	ELISA
EC	ELISA (Capture)
ED	ELISA (Detection)
F	Flow Cytometry
FN	Functional Assay
IC	Immunocytochemistry
ID	Immunodiffusion
IF	Immunofluorescence
IP	Immunoprecipitation
IV	In vivo Assay
N	Neutralization
P	Paraffin-Embedded Sections
R	RIA
WB	Western Blotting

! Please inquire about additional formats and azide free products.

Specificity	Format	Applications	Size	Cat #
Mac-3 Clone: M3/84 Isotype: Rat IgG1	Purified	F, C, CT, IP, E, IF	100 µg	CL8943AP
	Purified	F, C, CT, IP, E, IF	300 µg	CL8943AP-3
	Biotin	F, C	100 µg	CL8943B
	Biotin	F, C	300 µg	CL8943B-3
	FITC	F	100 µg	CL8943F
	FITC	F	300 µg	CL8943F-3
	PE	F	50 µg	CL8943PE
	PE	F	300 µg	CL8943PE-3
Macrophages (metallophillic) Clone: MOMA-1 Isotype: Rat IgG2a	Purified	F, C	100 µg	CL89149
	Biotin	F	100 µg	CL89149B
	FITC	F	100 µg	CL89149F
Macrophages (pan, F4/80 antigen) Clone: BM8 Isotype: Rat IgG2a	Purified	C, P, F	100 µg	CL89170AP
Macrophages (Polyclonal Rabbit) Isotype: Rabbit IgG	Antiserum	CT, IV	5 mL	CLA31240
	Ads. Antiserum	CT, C, P	1 mL	CLAD31240
	FITC	F, IF, C	2 mg	CLFAD31240
Macrophages/ Monocytes Clone: MOMA-2 Isotype: Rat IgG2b	Purified	F, C (fresh tissue)	200 µg	CL89154
MBL-A Clone: 8G6 Isotype: Rat IgG	Purified	WB, C, E	100 µg	CL7300AP
MBL-A Clone: 2B4 Isotype: Rat IgG	Purified	WB, E	100 µg	CL7301AP
MBL-C Clone: 16A8 Isotype: Rat IgG2a	Purified	WB, E	100 µg	CL7302AP
MBL-C Clone: 14D12 Isotype: Rat IgG2a	Purified	WB, C, E	100 µg	CL7303AP
MCP-1 (JE/MCP-1) Isotype: Rabbit IgG	Purified	N, E, WB	50 µg	CL9178AP
	Biotin	E	25 µg	CL9178B
	Recombinant		10 µg	CL9213R
MCP-3 (Macrophage/Monocyte Chemotactic Protein-3, CCL7) Isotype: Goat IgG	Purified	N, E, WB	50 µg	CL9182AP
	Biotin	E	25 µg	CL9182B
	Recombinant		10 µg	CL9217R
MCP-5 (Macrophage/Monocyte Chemotactic Protein-5/ Eotaxin-2, CCL12) Isotype: Rabbit IgG	Purified	N, E, WB	50 µg	CL9183AP
	Biotin	E	25 µg	CL9183B
	Recombinant		20 µg	CL9218R

Specificity	Format	Applications	Size	Cat #
M-CSF (JE/MCP-1)	Purified	N, E, WB	50 µg	CL9180AP
	Biotin	E	25 µg	CL9180B
Isotype: Goat IgG	Recombinant		10 µg	CL9242R
MDC (Macrophage Derived Chemokine, CCL22)	Recombinant		20 µg	CL9219R
MEC (CCL28) Isotype: Rabbit IgG	Recombinant		20 µg	CL9239R
Mid-Stage Macrophage Precursor Cells, Ly-6C Clone: ER-MP20 Isotype: Rat IgG2a	PE	F	100 µg	CL89172PE
MIG (Monokine Induced by IFN-Gamma, CXCL9)	Recombinant		20 µg	CL9220R
MIP-1a (Macrophage Inflammatory Protein-1 alpha, CCL3)	Purified	N, E, WB	50 µg	CL9184AP
	Biotin	E	25 µg	CL9184B
Isotype: Rabbit IgG	Recombinant		10 µg	CL9221R
MIP-1β (Macrophage Inflammatory Protein-1 alpha, CCL4)	Recombinant		20 µg	CL9222R
MIP-1Gamma (Macrophage Inflammatory Protein-1 gamma, CCL9, CCL10)	Purified	N, E, WB	50 µg	CL9185AP
	Biotin	E	25 µg	CL9185B
Isotype: Rabbit IgG	Recombinant		20 µg	CL9222R
MIP-2 (Macrophage Inflammatory Protein-2, CXCL2)	Purified	N, E, WB	50 µg	CL9186AP
	Biotin	E	25 µg	CL9186B
Isotype: Rabbit IgG	Recombinant		20 µg	CL9223R
MIP-3a (Macrophage Inflammatory Protein-3 alpha, CCL20)	Recombinant		20 µg	CL9235R
MIP-3β (Macrophage Inflammatory Protein-3 beta, CCL19)	Recombinant		20 µg	CL9236R
N-CAM (CD56) Clone: H28-123-16 Isotype: Rat IgG2a	Purified	C, IF, IP, WB, F	200 µg	CL10008AP
Nerve Growth Factor Isotype: Rabbit Sera	Lyophilized (rabbit serum)	N, WB	1 mL	CLMCNET-011

Legend for Applications:

AC	Affinity Chromatography
AGG	Agglutination
C	Cryostat Sections
CT	Cytotoxicity Assay
D	Depletion
E	ELISA
EC	ELISA (Capture)
ED	ELISA (Detection)
F	Flow Cytometry
FN	Functional Assay
IC	Immunocytochemistry
ID	Immunodiffusion
IF	Immunofluorescence
IP	Immunoprecipitation
IV	<i>In vivo</i> Assay
N	Neutralization
P	Paraffin-Embedded Sections
R	RIA
WB	Western Blotting

! Please inquire about additional formats and azide free products.

Specificity	Format	Applications	Size	Cat #
Nerve Growth Factor Isotype: Sheep Sera	Lyophilized (sheep serum)	N, WB, IV	1 mL	CLMCNET-021
Nerve Growth Factor Isotype: Sheep IgG	Purified (sheep IgG)	N, WB, IV	1 mg	CLMCNET-031
	Affinity Purified (sheep IgG)	N, E, WB, E, IV	1 mg	CLMCNET-041
	Affinity Purified (sheep IgG)	N, E, WB, E, IV	500 µg	CLMCNET-041.5
Nerve Growth Factor Isotype: Rabbit IgG	Purified (rabbit IgG)	N, WB	1 mg	CLMCNET-051
	Affinity Purified (rabbit IgG)	N, WB	100 µg	CLMCNET-061.1
Neuron Specific Enolase Clone: NSE-P1 Isotype: Mouse IgG1k	Purified	WB, ELISA, IHC	200 µg	CL2721AP
Neuron Specific Enolase Clone: NSE-P2 Isotype: Mouse IgG1k	Purified	WB, ELISA, IHC	200 µg	CL2722AP
Neutrophils Clone: 7/4 Isotype: Rat IgG2a	Purified	F, C, P	100 µg	CL8993AP
	Biotin	F, C, P	100 µg	CL8993B
	FITC	F	100 µg	CL8993F
	FITC	F	300 µg	CL8993F-3
	PE	F	50 µg	CL8993PE
	PE	F	300 µg	CL8993PE-3
Neutrophils (GM3.2) Clone: 5120-26.1/11 Isotype: Mouse IgG2a	Ascites	F	0.5 mL	CL8992A
NGF Receptor Clone: 192 Isotype: Mouse IgG1	Purified	C	50 µg	CL10009AP
NK Cells Clone: DX5 Isotype: Rat IgM	Purified	F	200 µg	CL8962AP
	Biotin	F	100 µg	CL8962B
	FITC	F	100 µg	CL8962F
	PE	F	50 µg	CL8962PE
NK1.1 (CD161, NK Cells) Clone: PK136 Isotype: Mouse IgG2a	Purified	F	250 µg	CL8994AP
	APC	F	100 µg	CL8994APC
	Biotin	F	100 µg	CL8994B
	Biotin	F	300 µg	CL8994B-3
	FITC	F	100 µg	CL8994F
	PE	F	50 µg	CL8994PE
	PE	F	300 µg	CL8994PE-3
	Low Endotoxin	F, FN	500 µg	CL8994LE

Specificity	Format	Applications	Size	Cat #
Non-T cell Activation Linker (mouse) Clone: Polyclonal Isotype: Rabbit IgG	Purified	WB, IHC	0.1 mg	CLX400AP
Non-T cell Activation Linker (mouse, rat) Clone: Polyclonal Isotype: Rabbit IgG	Purified	WB, IHC	0.1 mg	CLX399AP
p53 Isotype: Rabbit Clonal IgG	Purified	WB, ELISA, IP, IHC	50 µL	CL2811AP-0.05
	Purified	WB, ELISA, IP, IHC	100 µL	CL2811AP
PD-1 (CD279) Clone: J43 Isotype: Hamster IgG	Purified	F	250 µg	CL8982AP
	Biotin	F	100 µg	CL8982B
	FITC	F	100 µg	CL8982F
	PE	F	50 µg	CL8982PE
PKCα Isotype: Rabbit Clonal IgG	Purified	WB, ELISA, IP, IHC	50 µL	CL2814AP-0.05
	Purified	WB, ELISA, IP, IHC	100 µL	CL2814AP
PKCβI Isotype: Rabbit Clonal IgG	Purified	WB, ELISA, IP, IHC	50 µL	CL2815AP-0.05
	Purified	WB, ELISA, IP, IHC	100 µL	CL2815AP
PKCβII Isotype: Rabbit Clonal IgG	Purified	WB, ELISA, IP, IHC	50 µL	CL2816AP-0.05
	Purified	WB, ELISA, IP, IHC	100 µL	CL2816AP
PKCγ Isotype: Rabbit Clonal IgG	Purified	WB, ELISA, IP, IHC	50 µL	CL2817AP-0.05
	Purified	WB, ELISA, IP, IHC	100 µL	CL2817AP
PKCδ Isotype: Rabbit Clonal IgG	Purified	WB, ELISA, IP, IHC	50 µL	CL2818AP-0.05
	Purified	WB, ELISA, IP, IHC	100 µL	CL2818AP
PKCε Isotype: Rabbit Clonal IgG	Purified	WB, ELISA, IP, IHC	50 µL	CL2819AP-0.05
	Purified	WB, ELISA, IP, IHC	100 µL	CL2819AP
PKCζ Isotype: Rabbit Clonal IgG	Purified	WB, ELISA, IP, IHC	50 µL	CL2820AP-0.05
	Purified	WB, ELISA, IP, IHC	100 µL	CL2820AP
Platelet Clone: AIP21 Isotype: Rat IgM	Purified	F, IP, WB, FN	250 µg	CL8960AP
	FITC	F	100 µg	CL8960F
	FITC	F	300 µg	CL8960F-3
PMN (Polyclonal Rabbit) Isotype: Rabbit IgG	Antiserum	CT, IV	5 mL	CLA31140
	Ads. Antiserum	CT, C, P	1 mL	CLAD31140
	FITC	IF, F, C	2 mg	CLFAD31140
Prolactin Receptor Clone: Polyclonal Isotype: Rabbit IgG	Purified	E, WB, IHC-P	100 µg	CL093AP
Qa.m2 Clone: 141-16.6 Isotype: Mouse IgG2b	Ascites	CT	0.5 mL	CL8902A

Legend for Applications:

AC	Affinity Chromatography
AGG	Agglutination
C	Cryostat Sections
CT	Cytotoxicity Assay
D	Depletion
E	ELISA
EC	ELISA (Capture)
ED	ELISA (Detection)
F	Flow Cytometry
FN	Functional Assay
IC	Immunocytochemistry
ID	Immunodiffusion
IF	Immunofluorescence
IP	Immunoprecipitation
IV	<i>In vivo</i> Assay
N	Neutralization
P	Paraffin-Embedded Sections
R	RIA
WB	Western Blotting

! Please inquire about additional formats and azide free products.

Specificity	Format	Applications	Size	Cat #
Qa.m7 Clone: 5035-50.1 Isotype: Mouse IgM	Ascites	CT	0.5 mL	CL8907A
Qa.m8 Clone: 5035-24.1 Isotype: Mouse IgG3	Ascites	CT	0.5 mL	CL8908A
Qa.m9 Clone: 5034-54.8 Isotype: Mouse IgG1	Ascites	CT	0.5 mL	CL8909A
sRANK Ligand Isotype: Rabbit IgG	Purified	N, E, WB	50 µg	CL9195AP
	Biotin	E	25 µg	CL9195B
	Recombinant		10 µg	CL9243R
RANTES (CCL5) Isotype: Rabbit IgG	Purified	N, E, WB	50 µg	CL9187AP
	Biotin	E	25 µg	CL9187B
	Recombinant		20 µg	CL9224R
RBC (Polyclonal Rabbit) Isotype: Rabbit IgG	Antiserum	CT	2 mL	CLA3840
	IgG Fraction	CT	20 mg	CLAG3840
	FITC	IF, F	3 mg	CLFAG3840
RELM-a (Resistin-Like Molecule alpha)	Recombinant		25 µg	CL9247R
RELM-β (Resistin-Like Molecule beta/F.222)	Recombinant		25 µg	CL9248R
Resistin Isotype: Goat IgG	Purified	N, E, WB	50 µg	CL9193AP
	Biotin	E	25 µg	CL9193B
	Recombinant		25 µg	CL9250R
Reticular Fibroblast (pan) Clone: ER-TR7 Isotype: Rat IgG2a	Purified	C	100 µg	CL89146
R-PE Isotype: Rabbit IgG	Purified	F, IHC, E	500 µg	CL8888AP
	FITC	F, IHC	100 µg	CL8888F
Sca-1 (Ly-6A.2/6E.1) Clone: CT-6A/6E Isotype: Rat IgG2b	Purified	F	200 µg	CL8934AP
	PE	F	50 µg	CL8934PE
	PE	F	300 µg	CL8934PE-3
Sca-1 (Ly-6AE) Clone: D7 Isotype: Rat IgG2a	Purified	F	200 µg	CL8948AP
	Biotin	F	100 µg	CL8948B
	Biotin	F	300 µg	CL8948B-3
	PE	F	50 µg	CL8948PE
	PE	F	300 µg	CL8948PE-3
sCD40 Ligand/ TRAP	Recombinant		25 µg	CL9251R

Specificity	Format	Applications	Size	Cat #
SCF (Stem Cell Factor) Isotype: Rabbit IgG	Purified	N, E, WB	50 µg	CL9171AP
	Biotin	E	25 µg	CL9171B
	Recombinant		10 µg	CL9203R
SDF-1a (Stromal Cell Derived Factor-1a) Isotype: Goat IgG	Purified	N, E, WB	50 µg	CL9189AP
	Biotin	E	25 µg	CL9189B
SDF-1a (Stromal Cell Derived Factor-1a)	Recombinant		10 µg	CL9320R
SF20	Recombinant		10 µg	CL9325R
SLP65/BLNK (mouse) Clone: Polyclonal Isotype: Rabbit IgG	Purified	E	0.1 mg	CLX213AP
sRANK Ligand Isotype: Rabbit IgG	Purified	N, E, WB	50 µg	CL9195AP
	Biotin	E	25 µg	CL9195B
	Recombinant		10 µg	CL9243R
T Cells (Thy 1) Polyclonal Rabbit Isotype: Rabbit Sera	Serum	CT, C	1 mL	CL2001
	Serum	CT, C	5 mL	CL2005
T Cells (Thy 1.2) Polyclonal Mouse serum Isotype: Mouse sera	Alloantiserum	CT	0.5 mL	CL8959
TCR (Alpha/Beta) Clone: H57-597 Isotype: Hamster IgG	Ascites	F, IP, C	0.5 mL	CL7200A
	Purified	F, IP, C, WB	250 µg	CL7200AP
	APC	F	100 µg	CL7200APC
	Biotin	F, C	100 µg	CL7200B
	Biotin	F, C	300 µg	CL7200B-3
	FITC	F	100 µg	CL7200F
	FITC	F	300 µg	CL7200F-3
	PE	F	50 µg	CL7200PE
	PE	F	300 µg	CL7200PE-3
	PE-Cy5	F	100 µg	CL7200TC
TCR (Gamma/Delta) Clone: GL3 Isotype: Hamster IgG	Ascites	F, C	0.5 mL	CL7201A
	Purified	F, C	250 µg	CL7201AP
	Biotin	F, C	100 µg	CL7201B
	Biotin	F, C	300 µg	CL7201B-3
	FITC	F	100 µg	CL7201F
	FITC	F	300 µg	CL7201F-3
	PE	F	50 µg	CL7201PE
	PE	F	300 µg	CL7201PE-3
PE-Cy5	F	100 µg	CL7201TC	

Legend for Applications:

- AC** Affinity Chromatography
- AGG** Agglutination
- C** Cryostat Sections
- CT** Cytotoxicity Assay
- D** Depletion
- E** ELISA
- EC** ELISA (Capture)
- ED** ELISA (Detection)
- F** Flow Cytometry
- FN** Functional Assay
- IC** Immunocytochemistry
- ID** Immunodiffusion
- IF** Immunofluorescence
- IP** Immunoprecipitation
- IV** *In vivo* Assay
- N** Neutralization
- P** Paraffin-Embedded Sections
- R** RIA
- WB** Western Blotting

! Please inquire about additional formats and azide free products.

Specificity	Format	Applications	Size	Cat #
Va 2 TCR Clone: B20.1 Isotype: Rat IgG2a	Purified	F	200 µg	CL7213AP
	APC	F	100 µg	CL7213APC
	Biotin	F	100 µg	CL7213B
	FITC	F	100 µg	CL7213F
	PE	F	50 µg	CL7213PE
Vβ 8.1, 8.2 TCR Clone: KJ16 Isotype: Rat IgG1	Purified	F, C	200 µg	CL7207AP
	FITC	F	100 µg	CL7207F
Thrombocyte (Polyclonal Rabbit) Isotype: Rabbit IgG	Antiserum	CT, IV	5 mL	CLA31440
	Ads. Antiserum	CT, C, P	1 mL	CLAD31440
	FITC	F, IF, C	2 mg	CLFAD31440
Thymocytes (Polyclonal Rabbit) Isotype: Rabbit Sera	Serum	CT	1 mL	CL2301
	Serum	CT	5 mL	CL2305
TIM3 Clone: 25F1D6 Isotype: Rat IgG2ak	Purified	F, IHC, WB	250 µg	CL8987AP
	Biotin	F, IHC, WB	100 µg	CL8987B
	FITC	F, IHC	100 µg	CL8987F
	PE	F, WB	50 µg	CL8987PE
TNF-α (Tumor Necrosis Factor-α)	Recombinant		20 µg	CL9300TR
TNF-R, p55 (CD120a) Clone: HM104 Isotype: Rat IgG2a	Purified	F	100 µg	CL8957AP
TPO	Recombinant		10 µg	CL9246R
Transferrin (Polyclonal Rabbit) Isotype: Rabbit IgG	Antiserum	IP, ID	2 mL	CLA3240
	IgG Fraction	IP, ID	20 mg	CLAG3240
	FITC	F, IF	3 mg	CLFAG3240
Beta-Tubulin Clone: KMX-1 Isotype: Mouse IgG2b	Purified	WB, IF	50 µg	CLT9003
VEGF (Vascular Endothelial Cell Growth Factor) Isotype: Rabbit IgG	Purified	N, E, WB	50 µg	CL9188AP
	Biotin	E	25 µg	CL9188B
	Recombinant		10 µg	CL9225R
von Willebrand Factor (Polyclonal sheep IgG) Isotype: Sheep IgG	HRPO	WB	0.2 mg	CL20176HP-R

Rat Antibodies

Specificity	Format	Applications	Size	Cat #
Actin Clone: C4 Isotype: Mouse IgG1	Purified	IF, E, WB, P	100 µg	CLT9001
Actin Clone: Rabbit Clonal Isotype: Clonal Rabbit IgG	Purified	WB, ELISA, IP, P	100 µL	CL2810AP
Alpha-Actin Clone: ASM-1 Isotype: Mouse IgG2a	Purified	C, WB, IF	50 µg	CLT9000
AGP (acid glycoprotein) Isotype: Rabbit IgG	Lyophilized Serum	IP, WB, E, R	200 µL	CLAS01-015
Albumin Clone: Polyclonal Isotype: Polyclonal Rabbit	Antiserum	IP, ID	2 mL	CLA5140
	IgG Fraction	IP, ID	20 mg	CLAG5140
	FITC	IF, F	3 mg	CLFAG5140
Alpha/Beta TCR Clone: R73 Isotype: Mouse IgG1	Purified	F, IP, C, FN	200 µg	CL057AP
	Purified	F, IP, C, FN	500 µg	CL057AP-2
	Biotin	F, C	100 µg	CL057B
	Biotin	F, C	500 µg	CL057B-5
	FITC	F	100 µg	CL057F
	FITC	F	500 µg	CL057F-5
	PE	F	50 µg	CL057PE
alpha-1-microglobulin Isotype: Rabbit IgG	Lyophilized Serum	WB, ELISA, ICC, RIA	200 µL	CLAS01-014
Asialo GM1 (Polyclonal Rabbit) Clone: Polyclonal Isotype: Rabbit Ig	Ig fraction	CT, FN, F, C, IP	1 mL	CL8955
Bikunin Isotype: Rabbit IgG	Lyophilized Serum	WB, E, C	200 µL	CLAS04-039
C1q Isotype: Rabbit Ig	Purified	C, E, IP	100 µg	CL7333AP
C3 Isotype: Rabbit Ig	Purified	E, WB	100 µg	CL7334AP

Legend for Applications:

AC	Affinity Chromatography
AGG	Agglutination
C	Cryostat Sections
CT	Cytotoxicity Assay
D	Depletion
E	ELISA
EC	ELISA (Capture)
ED	ELISA (Detection)
F	Flow Cytometry
FN	Functional Assay
IC	Immunocytochemistry
ID	Immunodiffusion
IF	Immunofluorescence
IP	Immunoprecipitation
IV	<i>In vivo</i> Assay
N	Neutralization
P	Paraffin-Embedded Sections
R	RIA
WB	Western Blotting

! Please inquire about additional formats and azide free products.

Specificity	Format	Applications	Size	Cat #
C3/C3b Clone: 2B10B9B2 Isotype: Mouse IgM	Purified	E, WB	100 µg	CL7330AP
C3a receptor Clone: 74 Isotype: Mouse IgG1	Purified	F, C	250 µg	CL031AP
	Biotin	F, C	100 µg	CL031B
	FITC	F, C	100 µg	CL031F
	PE	F, C	50 µg	CL031PE
C4 Isotype: Rabbit Ig	Purified	E, IP	100 µg	CL7335AP
C5aR Clone: R63 Isotype: Mouse IgG1	Purified	C, F	100 µg	CL7326AP
CD2 (LFA-2) Clone: OX-34 Isotype: Mouse IgG2a	Ascites	F, IP, C, P	0.5 mL	CL034A
	Purified	F, IP, C, P	250 µg	CL034AP
	Purified	F, IP, C, P	500 µg	CL034AP-2
	Biotin	F, C, P	100 µg	CL034B
	Biotin	F, C, P	500 µg	CL034B-5
	FITC	F	100 µg	CL034F
	FITC	F	500 µg	CL034F-5
	PE	F	50 µg	CL034PE
	PE	F	200 µg	CL034PE-4
CD3 Clone: IF4 Isotype: Mouse IgM	Purified	F, CT, C, FN, P	200 µg	CL020AP
	FITC	F	100 µg	CL020F
CD4 Clone: W3/25 Isotype: Mouse IgG1	Ascites	F, IP, C, P, FN	0.5 mL	CL003A
	Purified	F, IP, C, P, FN	250 µg	CL003AP
	Purified	F, IP, C, P, FN	500 µg	CL003AP-2
	APC	F	100 µg	CL003APC
	Biotin	F, IP, C, P	100 µg	CL003B
	Biotin	F, IP, C, P	500 µg	CL003B-5
	FITC	F, IF	100 µg	CL003F
	FITC	F, IF	500 µg	CL003F-5
	PE	F	50 µg	CL003PE
PE	F	200 µg	CL003PE-4	
CD4 Clone: OX-38 Isotype: Mouse IgG2a	Ascites	F, IP, C	0.5 mL	CL038A
CD5 Clone: OX-19 Isotype: Mouse IgG1	Ascites	F, IP, WB, C, P	0.5 mL	CL006A
	Purified	F, IP, WB, C, P	250 µg	CL006AP
	Purified	F, IP, WB, C, P	500 µg	CL006AP-2
	Biotin	F, C, WB, P	100 µg	CL006B
	Biotin	F, C, WB, P	500 µg	CL006B-5
	FITC	F	100 µg	CL006F
	FITC	F	500 µg	CL006F-5
	PE	F	50 µg	CL006PE

Specificity	Format	Applications	Size	Cat #
CD8a Clone: OX-8 Isotype: Mouse IgG1	Ascites	F, IP, WB, C, P	0.5 mL	CL004A
	Purified	F, IP, WB, C, P	250 µg	CL004AP
	Purified	F, IP, WB, C, P	500 µg	CL004AP-2
	Biotin	F, WB, C, P	100 µg	CL004B
	Biotin	F, WB, C, P	500 µg	CL004B-5
	FITC	F	100 µg	CL004F
	FITC	F	500 µg	CL004F-5
	PE	F	50 µg	CL004PE
	PE	F	200 µg	CL004PE-4
	PE-Cy5	F	100 µg	CL004TC
CD8b (β chain) Clone: 3.4.1 Isotype: Mouse IgG1	Purified	F	250 µg	CL091AP
	Biotin	F	100 µg	CL091B
	Biotin	F	500 µg	CL091B-5
	FITC	F	100 µg	CL091F
	FITC	F	500 µg	CL091F-5
	PE	F	50 µg	CL091PE
	PE	F	200 µg	CL091PE-4
CD11a (LFA-1a) Clone: WT.1 Isotype: Mouse IgG2a	Purified	F, C, IP, FN	250 µg	CL017AP
	Biotin	F, C	100 µg	CL017B
	Biotin	F, C	500 µg	CL017B-5
	FITC	F	100 µg	CL017F
	FITC	F	500 µg	CL017F-5
	PE	F	50 µg	CL017PE
	PE	F	200 µg	CL017PE-4
CD11b/c (pan macrophage) Clone: OX-42 Isotype: Mouse IgG2a	Ascites	F, IP, C, P, FN	0.5 mL	CL042A
	Purified	F, IP, C, P	250 µg	CL042AP
	Purified	F, IP, C, P	500 µg	CL042AP-2
	APC	F	100 µg	CL042APC
	Biotin	F, C, P	100 µg	CL042B
	Biotin	F, C, P	500 µg	CL042B-5
	FITC	F	100 µg	CL042F
	FITC	F	500 µg	CL042F-5
	PE	F	50 µg	CL042PE
	PE	F	200 µg	CL042PE-4
CD18 (β2 Integrin) Clone: WT.3 Isotype: Mouse IgG1	Purified	F, C, IP, FN	200 µg	CL018AP
	Biotin	F, C	100 µg	CL018B
	FITC	F	100 µg	CL018F
	PE	F	50 µg	CL018PE

Legend for Applications:

AC	Affinity Chromatography
AGG	Agglutination
C	Cryostat Sections
CT	Cytotoxicity Assay
D	Depletion
E	ELISA
EC	ELISA (Capture)
ED	ELISA (Detection)
F	Flow Cytometry
FN	Functional Assay
IC	Immunocytochemistry
ID	Immunodiffusion
IF	Immunofluorescence
IP	Immunoprecipitation
IV	In vivo Assay
N	Neutralization
P	Paraffin-Embedded Sections
R	RIA
WB	Western Blotting

! Please inquire about additional formats and azide free products.

Specificity	Format	Applications	Size	Cat #
CD25 (IL-2Ra) Clone: OX-39 Isotype: Mouse IgG1	Ascites	F, IP, C, P, FN	0.5mL	CL039A
	Purified	F, IP, C, P, FN	250 µg	CL039AP
	Purified	F, IP, C, P, FN	500 µg	CL039AP-2
	Biotin	F, C, P	100 µg	CL039B
	Biotin	F, C, P	500 µg	CL039B-5
	FITC	F	100 µg	CL039F
	FITC	F	500 µg	CL039F-5
	PE	F	50 µg	CL039PE
	PE	F	200 µg	CL039PE-4
CD26 Clone: OX-61 Isotype: Mouse IgG2a	Purified	F, IP, C, WB	250 µg	CL061AP
	Biotin	F, IP, C, WB	100 µg	CL061B
	Biotin	F, IP, C, WB	500 µg	CL061B-5
	FITC	F	100 µg	CL061F
	FITC	F	500 µg	CL061F-5
	PE	F	50 µg	CL061PE
	PE	F	200 µg	CL061PE-4
CD28 (Tp44; receptor for B7 family) Clone: JJ319 Isotype: Mouse IgG1	Purified	F, IP	250 µg	CL028AP
	Purified	F, IP	500 µg	CL028AP-2
	Biotin	F	100 µg	CL028B
	Biotin	F	500 µg	CL028B-5
	FITC	F	100 µg	CL028F
FITC	F	500 µg	CL028F-5	
CD43 (Leukosialin; sialophorin) Clone: W3/13HLK Isotype: Mouse IgG1	Ascites	F, C	0.5 mL	CL002A
	Purified	F, C	250 µg	CL002AP
	Purified	F, C	500 µg	CL002AP-2
	Biotin	F, C	100 µg	CL002B
	Biotin	F, C	500 µg	CL002B-5
	FITC	F	100 µg	CL002F
	FITC	F	500 µg	CL002F-5
	PE	F	50 µg	CL002PE
CD44 (Pgp-1) Clone: OX-49 Isotype: Mouse IgG2a	Ascites	F, IP, C	0.5 mL	CL044A
	Purified	F, IP, C	250 µg	CL044AP
	Purified	F, IP, C	500 µg	CL044AP-2
	Biotin	F, C	100 µg	CL044B
	Biotin	F, C	500 µg	CL044B-5
	FITC	F	100 µg	CL044F
	FITC	F	500 µg	CL044F-5
CD45 (LCA) Clone: OX-30 Isotype: Mouse IgG2a	Ascites	F, C	0.5 mL	CL001A
	Purified	F, C	250 µg	CL001AP
	Purified	F, C	500 µg	CL001AP-2
	Biotin	F, C	100 µg	CL001B
	Biotin	F, C	500 µg	CL001B-5
	FITC	F	100 µg	CL001F
	FITC	F	500 µg	CL001F-5
	PE	F	50 µg	CL001PE
	PE	F	200 µg	CL001PE-4

Specificity	Format	Applications	Size	Cat #
CD45 (LCA) Clone: OX-1 Isotype: Mouse IgG1	Ascites	F, C, IF, P	0.5 mL	CL009A
	Purified	F, C, IF, P	250 µg	CL009AP
	Purified	F, C, IF, P	500 µg	CL009AP-2
	Biotin	F, C	100 µg	CL009B
	Biotin	F, C	500 µg	CL009B-5
	FITC	F	100 µg	CL009F
	FITC	F	500 µg	CL009F-5
	PE	F	50 µg	CL009PE
	PE	F	200 µg	CL009PE-4
CD45 (LCA) Clone: MEM-28 Isotype: Mouse IgG1	Purified	F, IP, WB, P	0.1 mg	CLX48AP
CD45RA (pan B cell) Clone: OX-33 Isotype: Mouse IgG1	Ascites	F, C, P	0.5 mL	CL033A
	Purified	F, C, P	250 µg	CL033AP
	Purified	F, C, P	500 µg	CL033AP-2
	Biotin	F, C, P	100 µg	CL033B
	Biotin	F, C, P	500 µg	CL033B-5
	FITC	F	100 µg	CL033F
	FITC	F	500 µg	CL033F-5
PE	F	50 µg	CL033PE	
CD45RC Clone: OX-45 Isotype: Mouse IgG1	Ascites	F, C	0.5 mL	CL022A
	Purified	F, C	250 µg	CL022AP
	Purified	F, C	500 µg	CL022AP-2
	Biotin	F, C	100 µg	CL022B
	Biotin	F, C	500 µg	CL022B-5
	FITC	F	100 µg	CL022F
	FITC	F	500 µg	CL022F-5
PE	F	50 µg	CL022PE	
CD48 (Blast-1) Clone: OX-45 Isotype: Mouse IgG1	Purified	F	250 µg	CL045AP
	Biotin	F	100 µg	CL045B
	Biotin	F	500 µg	CL045B-5
	FITC	F	100 µg	CL045F
	FITC	F	500 µg	CL045F-5
	PE	F	50 µg	CL045PE
CD54 (ICAM-1) Clone: 1A29 Isotype: Mouse IgG1	Purified	F, IP, C, FN	200 µg	CL054AP
	Biotin	F, C	100 µg	CL054B
CD54 (ICAM-1) Clone: MEM-111 Isotype: Mouse IgG2a	Purified	F, WB, P, E	0.1 mg	CLX58AP
CD54 (ICAM-1) Clone: MEM-112 Isotype: Mouse IgG1	Purified	F, IP	0.1 mg	CLX59AP

Legend for Applications:

AC	Affinity Chromatography
AGG	Agglutination
C	Cryostat Sections
CT	Cytotoxicity Assay
D	Depletion
E	ELISA
EC	ELISA (Capture)
ED	ELISA (Detection)
F	Flow Cytometry
FN	Functional Assay
IC	Immunocytochemistry
ID	Immunodiffusion
IF	Immunofluorescence
IP	Immunoprecipitation
IV	<i>In vivo</i> Assay
N	Neutralization
P	Paraffin-Embedded Sections
R	RIA
WB	Western Blotting

! Please inquire about additional formats and azide free products.

Specificity	Format	Applications	Size	Cat #
CD56 (N-CAM) Clone: H28-123-16 Isotype: Rat IgG2a	Purified	C, IF, IP, WB, F	200 µg	CL10008AP
CD61 Clone: HMB3-1 Isotype: Armenian Hamster	Purified	F	200 µg	CL8961AP
	PE	F	50 µg	CL8961PE
CD62L (L-selectin, LECAM) Clone: OX-85 Isotype: Mouse IgG1	Ascites	F, E	0.5 mL	CL085A
	Purified	F, E	250 µg	CL085AP
	Biotin	F	100 µg	CL085B
	Biotin	F	500 µg	CL085B-5
	FITC	F	100 µg	CL085F
	FITC	F	500 µg	CL085F-5
	PE	F	50 µg	CL085PE
	PE	F	200 µg	CL085PE-4
CD71 (Transferrin Receptor) Clone: OX-26 Isotype: Mouse IgG2a	Ascites	F, IP, C	0.5 mL	CL071A
	Purified	F, IP, C	250 µg	CL071AP
	Purified	F, IP, C	500 µg	CL071AP-2
	Biotin	F, C	100 µg	CL071B
	Biotin	F, C	500 µg	CL071B-5
	FITC	F	100 µg	CL071F
	FITC	F	500 µg	CL071F-5
CD80 (B7-1) Clone: 3H5 Isotype: Mouse IgG1	Purified	F	200 µg	CL080AP
	Biotin	F	100 µg	CL080B
	PE	F	50 µg	CL080PE
	PE	F	300 µg	CL080PE-3
CD81 (TAPA-1) Clone: EAT 2 Isotype: Mouse IgG1	Purified	F	250 µg	CL8981AP
	Biotin	F	100 µg	CL8981B
	Biotin	F	300 µg	CL8981B-3
	FITC	F	100 µg	CL8981F
	FITC	F	300 µg	CL8981F-3
	PE	F	50 µg	CL8981PE
	PE	F	300 µg	CL8981PE-3
CD86 (B7-2) Clone: 24F Isotype: Mouse IgG1	Purified	F	200 µg	CL086AP
	Biotin	F	100 µg	CL086B
	FITC	F	100 µg	CL086F
	PE	F	50 µg	CL086PE
	PE	F	300 µg	CL086PE-3

Specificity	Format	Applications	Size	Cat #
CD90 (Thy 1.1) Clone: OX-7 Isotype: Mouse IgG1	Ascites	F, IP, C, FN	0.5 mL	CL005A
	Purified	F, IP, C, FN	250 µg	CL005AP
	Purified	F, IP, C, FN	500 µg	CL005AP-2
	Biotin	F, C	100 µg	CL005B
	Biotin	F, C	500 µg	CL005B-5
	FITC	F	100 µg	CL005F
	FITC	F	500 µg	CL005F-5
	LE	FN	500 µg	CL005LE
	LE	FN	1 mg	CL005LE-2
	PE	F	50 µg	CL005PE
PE	F	200 µg	CL005PE-4	
CD90 (Thy 1.1) Clone: 7C8 BB3 Isotype: Mouse IgM	Ascites	IF	0.5 mL	CL8500A
CD103 (Dendritic Cells) (alpha E2 Intergrin) Clone: OX-62 Isotype: Mouse IgG1	Ascites	F, C	0.5 mL	CL083A
	Purified	F, C	250 µg	CL083AP
	FITC	F	100 µg	CL083F
	FITC	F	500 µg	CL083F-5
CD134 Clone: OX40 Isotype: Mouse IgG1	Purified	F, C	250 µg	CL040AP
	Biotin	F, C	100 µg	CL040B
	FITC	F, C	100 µg	CL040F
	PE	F, C	50 µg	CL040PE
CD152 (CTLA-4) Clone: WKH 203 Isotype: Mouse IgG1	Purified	F, FN	250 µg	CL090AP
	Biotin	F	100 µg	CL090B
	Biotin	F	500 µg	CL090B-5
	FITC	F	100 µg	CL090F
	FITC	F	500 µg	CL090F-5
	PE	F	50 µg	CL090PE
	PE	F	200 µg	CL090PE-4
CD161 (NK cells, NKR-P1) Clone: Oct-78 Isotype: Mouse IgG1	Purified	F, C	250 µg	CL055AP
	Purified	F, C	500 µg	CL055AP-2
	Biotin	F, C	100 µg	CL055B
	Biotin	F, C	500 µg	CL055B-5
	FITC	F	100 µg	CL055F
	FITC	F	500 µg	CL055F-5
CD172a (Signal-Regulatory Protein) Clone: OX-41 Isotype: Mouse IgG2a	Ascites	F, WB, C, E, IP, IF	0.5 mL	CL041A
	Purified	F, WB, C, E, IP, IF	250 µg	CL041AP
	Biotin	F, C	100 µg	CL041B
	Biotin	F, C	500 µg	CL041B-5
	FITC	F	100 µg	CL041F
	FITC	F	500 µg	CL041F-5
	PE	F	50 µg	CL041PE
	PE	F	200 µg	CL041PE-4

Legend for Applications:

AC	Affinity Chromatography
AGG	Agglutination
C	Cryostat Sections
CT	Cytotoxicity Assay
D	Depletion
E	ELISA
EC	ELISA (Capture)
ED	ELISA (Detection)
F	Flow Cytometry
FN	Functional Assay
IC	Immunocytochemistry
ID	Immunodiffusion
IF	Immunofluorescence
IP	Immunoprecipitation
IV	<i>In vivo</i> Assay
N	Neutralization
P	Paraffin-Embedded Sections
R	RIA
WB	Western Blotting

Please inquire about additional formats and azide free products.

Specificity	Format	Applications	Size	Cat #
CD200 (OX-2) Clone: OX-2 Isotype: Mouse IgG1	Ascites	F, AC, IF	0.5 mL	CL082A
	Purified	F, AC, IF	250 µg	CL082AP
	Biotin	F	100 µg	CL082B
	Biotin	F	500 µg	CL082B-5
	FITC	F	100 µg	CL082F
	FITC	F	500 µg	CL082F-5
	PE	F	50 µg	CL082PE
	PE	F	200 µg	CL082PE-4
CNTF (Ciliary Neurotrophic Factor) Clone: Polyclonal Isotype: Rabbit IgG	Purified	N, E, WB	50 µg	CL9579AP
	Biotin	E	25 µg	CL9579B
	Recombinant		25 µg	CLR21
Collagen Type I Clone: Polyclonal Isotype: Rabbit IgG	Purified IgG	P, C, WB, RIA, ELISA	0.5 mL	CL50141AP
Collagen Type II Clone: Polyclonal Isotype: Rabbit IgG	Purified IgG	P, C, WB, RIA, ELISA	0.5 mL	CL50241AP
Collagen Type III Clone: Polyclonal Isotype: Rabbit IgG	Purified IgG	P, C, WB, RIA, ELISA	0.5 mL	CL50341AP
Collagen Type IV Clone: Polyclonal Isotype: Rabbit IgG	Purified IgG	P, C, WB, RIA, ELISA	0.5 mL	CL50441AP
Collagen Type V Clone: Polyclonal Isotype: Rabbit IgG	Purified IgG	P, C, WB, RIA, ELISA	0.5 mL	CL50541AP
CRRY Clone: 512 Isotype: Mouse IgG1	Purified	F, C	250 µg	CL064AP
	Biotin	F, C	100 µg	CL064B
	FITC	F, C	100 µg	CL064F
CTLA-4 (CD152) Clone: WKH 203 Isotype: Mouse IgG1	Purified	F, FN	250 µg	CL090AP
	Biotin	F	100 µg	CL090B
	Biotin	F	500 µg	CL090B-5
	FITC	F	100 µg	CL090F
	FITC	F	500 µg	CL090F-5
	PE	F	50 µg	CL090PE
	PE	F	200 µg	CL090PE-4
Dendritic Cells Clone: OX-62 Isotype: Mouse IgG1	Ascites	F, C	0.5 mL	CL083A
	Purified	F, C	250 µg	CL083AP
	FITC	F	100 µg	CL083F
	FITC	F	500 µg	CL083F-5
Dendritic Cells (CD103) (alpha E2 Intergrin) Clone: OX-62 Isotype: Mouse IgG1	Ascites	F	0.5 mL	CL083A
	Purified	F	250 µg	CL083AP
	FITC	F	100 µg	CL083F
	FITC	F	500 µg	CL083F-5

Specificity	Format	Applications	Size	Cat #
Elastin Clone: Polyclonal Isotype: Rabbit IgG	Purified IgG	P, C, WB, RIA, ELISA	0.5 mL	CL55041AP
Endothelium Clone: OX-43 Isotype: Mouse IgG1	Ascites	F, IP, C	0.5 mL	CL043A
	Purified	F, IP, C	250 µg	CL043AP
	Purified	F, IP, C	500 µg	CL043AP-2
	Biotin	F, C	100 µg	CL043B
	Biotin	F, C	500 µg	CL043B-5
	FITC	F	100 µg	CL043F
	FITC	F	500 µg	CL043F-5
Erk 1,2 Clone: Rabbit Clonal Isotype: Clonal Rabbit IgG	Purified	WB, ELISA, IP, P	100 µL	CL2821AP
phospho - Erk 1,2 Clone: Rabbit Clonal Isotype: Clonal Rabbit IgG	Purified	WB, ELISA, IP, P	100 µL	CL2822AP
Erythrocytes Clone: OX-83 Isotype: Mouse IgG1	Purified	F	250 µg	CL089AP
	Biotin	F	100 µg	CL089B
	Biotin	F	500 µg	CL089B-5
	FITC	F	100 µg	CL089F
	FITC	F	500 µg	CL089F-5
Fibronectin Clone: Polyclonal Isotype: Rabbit IgG	Purified IgG	P, C, WB, RIA, ELISA	0.5 mL	CL54941AP
Galacto-cerebroside Clone: MGalC Isotype: Mouse IgG3	Purified	C, E	50 µg	CL10010AP
gamma/delta TCR Clone: V65 Isotype: Mouse IgG1	Purified	F, IP, FN, C	250 µg	CL056AP
	Purified	F, IP, FN, C	500 µg	CL056AP-2
	Biotin	F, C	100 µg	CL056B
	Biotin	F, C	500 µg	CL056B-5
	FITC	F	100 µg	CL056F
	FITC	F	500 µg	CL056F-5
GM-CSF	Recombinant		10 µg	CLR19
Granulocytes (pan) Clone: RK-4 Isotype: Mouse IgG1	Purified	F, C	100 µg	CL89152
	Biotin	F, C	100 µg	CL89152B
GRO/KC (Gro-alpha, KC, CINC, CXCL1) Clone: Polyclonal Isotype: Rabbit IgG	Purified	N, E, WB	50 µg	CL9574AP
	Biotin	E	25 µg	CL9574B
	Recombinant		25 µg	CLR03

Legend for Applications:

AC	Affinity Chromatography
AGG	Agglutination
C	Cryostat Sections
CT	Cytotoxicity Assay
D	Depletion
E	ELISA
EC	ELISA (Capture)
ED	ELISA (Detection)
F	Flow Cytometry
FN	Functional Assay
IC	Immunocytochemistry
ID	Immunodiffusion
IF	Immunofluorescence
IP	Immunoprecipitation
IV	<i>In vivo</i> Assay
N	Neutralization
P	Paraffin-Embedded Sections
R	RIA
WB	Western Blotting

! Please inquire about additional formats and azide free products.

Specificity	Format	Applications	Size	Cat #
GROb/MIP-2 Clone: Polyclonal Isotype: Rabbit IgG	Purified	N, E, WB	50 µg	CL9575AP
	Biotin	E	25 µg	CL9575B
	Recombinant		25 µg	CLR04
I-Ab,s Clone: OX-3 Isotype: Mouse IgG1	Ascites	F, IP, C	0.5 mL	CL008A
	Purified	F, IP, C	250 µg	CL008AP
	Purified	F, IP, C	500 µg	CL008AP-2
	Biotin	F, C	100 µg	CL008B
	Biotin	F, C	500 µg	CL008B-5
	FITC	F	100 µg	CL008F
	FITC	F	500 µg	CL008F-5
	PE	F	50 µg	CL008PE
	PE	F	200 µg	CL008PE-4
I-Ak,s Clone: OX-6 Isotype: Mouse IgG1	Ascites	F, C, P	0.5 mL	CL010A
	Purified	F, C, P	250 µg	CL010AP
	Purified	F, C, P	500 µg	CL010AP-2
	Biotin	F, C, P	100 µg	CL010B
	Biotin	F, C, P	500 µg	CL010B-5
	FITC	F	100 µg	CL010F
	FITC	F	500 µg	CL010F-5
	PE	F	50 µg	CL010PE
	PE	F	200 µg	CL010PE-4
IFN-α	Recombinant		1x10 ⁵ U	CLR30
IFN-β (Interferon-beta) Clone: Polyclonal Isotype: Rabbit IgG	Purified	N, E, WB, C, IP	500 µg	CL9143AP
	Recombinant		1x10 ⁵ U	CLR31
IFN-γ (Interferon-gamma) Clone: Polyclonal Isotype: Goat IgG	Purified	N, E, WB	50 µg	CL9581AP
	Biotin	E	25 µg	CL9581B
	Recombinant		100 µg	CLR09
Ig (kappa chain) Clone: OX-12 Isotype: Mouse IgG2a	Ascites	F, C	0.5 mL	CL019A
	Purified	F, C	250 µg	CL019AP
	Purified	F, C	500 µg	CL019AP-2
	Biotin	F, C	100 µg	CL019B
	Biotin	F, C	500 µg	CL019B-5
	FITC	F	100 µg	CL019F
	FITC	F	500 µg	CL019F-5
	PE	F	50 µg	CL019PE
IgG2b Clone: NORIg 7.16.2 Isotype: Mouse IgG1	Purified	F, WB, E	250 µg	CL094AP
	Biotin	F, WB, E	100 µg	CL094B
	FITC	F	100 µg	CL094F
	PE	F	50 µg	CL094PE
IL-1α Clone: Polyclonal Isotype: Goat IgG	Purified	N, E, WB	50 µg	CL9585AP
	Biotin	E	25 µg	CL9585B
	Recombinant		10 µg	CLR23

Specificity	Format	Applications	Size	Cat #
IL-1b	Purified	N, E, WB	50 µg	CL9580AP
Clone: Polyclonal Isotype: Rabbit IgG	Biotin	E	25 µg	CL9580B
	Recombinant		10 µg	CLR01
IL-2	Recombinant		20 µg	CLR13
IL-3β	Purified	N, E, WB	50 µg	CL9584AP
Clone: Polyclonal Isotype: Goat IgG	Biotin	E	25 µg	CL9584B
	Recombinant		10 µg	CLR10
IL-4	Purified	N, E, WB	50 µg	CL9582AP
Clone: Polyclonal Isotype: Rabbit IgG	Biotin	E	25 µg	CL9582B
	Recombinant		10 µg	CLR11
IL-6	Purified	N, E, WB	50 µg	CL9571AP
Clone: Polyclonal Isotype: Goat IgG	Biotin	E	25 µg	CL9571B
	Recombinant		10 µg	CLR02
IL-7	Recombinant		10 µg	CLR14
IL-10	Purified	N, E, WB	50 µg	CL9583AP
Clone: Polyclonal Isotype: Rabbit IgG	Biotin	E	25 µg	CL9583B
	Recombinant		10 µg	CLR12
IL-13	Recombinant		10 µg	CLR16
IL-15	Recombinant		10 µg	CLR22
iNOS	Purified	WB, ELISA, IP, P	100 µL	CL2812AP
Clone: Rabbit Clonal Isotype: Clonal Rabbit IgG				
Leptin	Purified	N, E, WB	50 µg	CL9586AP
Clone: Polyclonal Isotype: Goat IgG	Biotin	E	25 µg	CL9586B
	Recombinant		1 mg	CLR17
Lymphocytes	Serum	CT	1 mL	CL015A
Clone: Polyclonal Isotype: Rabbit				
Macrophage	Antiserum	CT, IV	5 mL	CLA51240
Clone: Polyclonal Isotype: Rabbit	Ads. Antiserum	CT, C, P	2 mL	CLAD51240
	FITC	F, IF, C	2 mg	CLFAD51240
Mast Cell	Antiserum	CT, IV	5 mL	CLA51340
Clone: Polyclonal Isotype: Rabbit	Ads. Antiserum	CT, C, P	2 mL	CLAD51340
	FITC	F, IF, C	2 mg	CLFAD51340
MCP-1	Purified	N, E, WB	50 µg	CL9576AP
(MCAF) (Macrophage/ Monocyte Chemoattractant Protein-1, CCL2)				
Clone: Polyclonal Isotype: Rabbit IgG	Biotin	E	25 µg	CL9576B
	Recombinant		10 µg	CLR05
(MCAF) (Macrophage/ Monocyte Chemoattractant Protein-1, CCL2)				

Legend for Applications:

AC	Affinity Chromatography
AGG	Agglutination
C	Cryostat Sections
CT	Cytotoxicity Assay
D	Depletion
E	ELISA
EC	ELISA (Capture)
ED	ELISA (Detection)
F	Flow Cytometry
FN	Functional Assay
IC	Immunocytochemistry
ID	Immunodiffusion
IF	Immunofluorescence
IP	Immunoprecipitation
IV	<i>In vivo</i> Assay
N	Neutralization
P	Paraffin-Embedded Sections
R	RIA
WB	Western Blotting

! Please inquire about additional formats and azide free products.

Specificity	Format	Applications	Size	Cat #
MIP-1a (Macrophage Inflammatory Protein-1 alpha, CCL3) Clone: Polyclonal Isotype: Rabbit IgG	Purified	N, E, WB	50 µg	CL9577AP
	Biotin	E	25 µg	CL9577B
MIP-1a (Macrophage Inflammatory Protein-1 alpha, CCL3)	Recombinant		20 µg	CLR06
MIP-1β (Macrophage Inflammatory Protein-1 beta, CCL4)	Recombinant		10 µg	CLR15
Myeloid Lineage Clone: OX-82 Isotype: Mouse IgG1	Purified	F	250 µg	CL081AP
	Biotin	F	100 µg	CL081B
	FITC	F	100 µg	CL081F
	PE	F	50 µg	CL081PE
N-CAM (CD56) Clone: H28-123-16 Isotype: Rat IgG2a	Purified	C, IF, IP, WB, F	200 µg	CL10008AP
Nerve Growth Factor Clone: Polyclonal Isotype: Polyclonal Rabbit	Lyophilized (rabbit serum)	N, WB	1 mL	CLMCNET-011
	Purified (rabbit IgG)	N, WB	1 mg	CLMCNET-051
Nerve Growth Factor Clone: Polyclonal Isotype: Polyclonal Sheep	Lyophilized (sheep serum)	N, WB, IV	1 mL	CLMCNET-021
	Purified (sheep IgG)	N, WB, IV	1 mg	CLMCNET-031
	Affinity Purified (sheep IgG)	N, E, WB, E, IV	1 mg	CLMCNET-041
	Affinity Purified (sheep IgG)	N, E, WB, E, IV	500 µg	CLMCNET-041.5
NGF Receptor Clone: 192 Isotype: Mouse IgG1	Purified	C	50 µg	CL10009AP
NK cells (NKR-P1, CD161) Clone: 10-78 Isotype: Mouse IgG1	Purified	F, C	250 µg	CL055AP
	Purified	F, C	500 µg	CL055AP-2
	Biotin	F, C	100 µg	CL055B
	Biotin	F, C	500 µg	CL055B-5
	FITC	F	100 µg	CL055F
	FITC	F	500 µg	CL055F-5
	PE	F	50 µg	CL055PE
OX-2 (CD200) Clone: OX-2 Isotype: Mouse IgG1	Ascites	F, AC, IF	0.5 mL	CL082A
	Purified	F, AC, IF	250 µg	CL082AP
	Biotin	F	100 µg	CL082B
	Biotin	F	500 µg	CL082B-5
	FITC	F	100 µg	CL082F
	FITC	F	500 µg	CL082F-5
	PE	F	50 µg	CL082PE
	PE	F	200 µg	CL082PE-4

Specificity	Format	Applications	Size	Cat #
p53 Clone: Rabbit Clonal Isotype: Clonal Rabbit IgG	Purified	WB, ELISA, IP, P	100 µL	CL2811AP
PGP 9.5 Clone: 31A3 Isotype: Mouse IgG1	Ascites	IHC, WB	200 µL	CL31A3
PKCα Isotype: Rabbit Clonal IgG	Purified	WB, ELISA, IP, IHC	50 µL	CL2814AP-0.05
	Purified	WB, ELISA, IP, IHC	100 µL	CL2814AP
PKCβI Isotype: Rabbit Clonal IgG	Purified	WB, ELISA, IP, IHC	50 µL	CL2815AP-0.05
	Purified	WB, ELISA, IP, IHC	100 µL	CL2815AP
PKCβII Isotype: Rabbit Clonal IgG	Purified	WB, ELISA, IP, IHC	50 µL	CL2816AP-0.05
	Purified	WB, ELISA, IP, IHC	100 µL	CL2816AP
PKCγ Isotype: Rabbit Clonal IgG	Purified	WB, ELISA, IP, IHC	50 µL	CL2817AP-0.05
	Purified	WB, ELISA, IP, IHC	100 µL	CL2817AP
PKCδ Isotype: Rabbit Clonal IgG	Purified	WB, ELISA, IP, IHC	50 µL	CL2818AP-0.05
	Purified	WB, ELISA, IP, IHC	100 µL	CL2818AP
PKCε Isotype: Rabbit Clonal IgG	Purified	WB, ELISA, IP, IHC	50 µL	CL2819AP-0.05
	Purified	WB, ELISA, IP, IHC	100 µL	CL2819AP
PKCζ Isotype: Rabbit Clonal IgG	Purified	WB, ELISA, IP, IHC	50 µL	CL2820AP-0.05
	Purified	WB, ELISA, IP, IHC	100 µL	CL2820AP
PMN Clone: Polyclonal Isotype: Rabbit	Antiserum	CT, IV	5 mL	CLA51140
	Ads. Antiserum	CT, C, P	2 mL	CLAD51140
	FITC	F, IF, C	2 mg	CLFAD51140
Prolactin Receptor Isotype: Rabbit IgG	Purified	E, WB, IHC-P	100 µg	CL093AP
RANTES (CCL5) Clone: Polyclonal Isotype: Rabbit IgG	Purified	E, WB	50 µg	CL9578AP
	Biotin	E	25 µg	CL9578B
	Recombinant		20 µg	CLR07
RBC Clone: Polyclonal Isotype: Rabbit	IgG Fraction	CT	20 mg	CLAG5840
	FITC	F, IF	3 mg	CLFAG5840
	Antiserum	CT	2 mL	CLA5840
RT1.A Clone: OX-18 Isotype: Mouse IgG1 (Class I)	Ascites	F, IP, C	0.5 mL	CL007A
	Purified	F, IP, C	250 µg	CL007AP
	Purified	F, IP, C	500 µg	CL007AP-2
	Biotin	F, C	100 µg	CL007B
	Biotin	F, C	500 µg	CL007B-5
	FITC	F	100 µg	CL007F
	FITC	F	500 µg	CL007F-5

Legend for Applications:

AC	Affinity Chromatography
AGG	Agglutination
C	Cryostat Sections
CT	Cytotoxicity Assay
D	Depletion
E	ELISA
EC	ELISA (Capture)
ED	ELISA (Detection)
F	Flow Cytometry
FN	Functional Assay
IC	Immunocytochemistry
ID	Immunodiffusion
IF	Immunofluorescence
IP	Immunoprecipitation
IV	In vivo Assay
N	Neutralization
P	Paraffin-Embedded Sections
R	RIA
WB	Western Blotting

! Please inquire about additional formats and azide free products.

Specificity	Format	Applications	Size	Cat #
RT1.Ac Clone: OX-27 Isotype: Mouse IgG2a (Class I)	Ascites	F, IP, C	0.5 mL	CL027A
	Purified	F, IP, C	250 µg	CL027AP
	Purified	F, IP, C	500 µg	CL027AP-2
	Biotin	F, C	100 µg	CL027B
	Biotin	F, C	500 µg	CL027B-5
	FITC	F	100 µg	CL027F
	FITC	F	500 µg	CL027F-5
RT1.D Clone: OX-17 Isotype: Mouse IgG1 (Class II)	Ascites	F, IP, C	0.5 mL	CL011A
	Purified	F, IP, C	250 µg	CL011AP
	Purified	F, IP, C	500 µg	CL011AP-2
	Biotin	F, C	100 µg	CL011B
	Biotin	F, C	500 µg	CL011B-5
	FITC	F	100 µg	CL011F
	FITC	F	500 µg	CL011F-5
SCF (Stem Cell Factor) Clone: Polyclonal Isotype: Goat IgG	Purified	E, WB	50 µg	CL9587AP
	Biotin	E	25 µg	CL9587B
	Recombinant		10 µg	CLR18
Signal-Regulatory Protein (CD172a) Clone: OX-41 Isotype: Mouse IgG2a	Ascites	F, WB, C, E, IP, IF	0.5 mL	CL041A
	Purified	F, WB, C, E, IP, IF	250 µg	CL041AP
	Biotin	F, C	100 µg	CL041B
	Biotin	F, C	500 µg	CL041B-5
	FITC	F	100 µg	CL041F
	FITC	F	500 µg	CL041F-5
	PE	F	50 µg	CL041PE
PE	F	200 µg	CL041PE-4	
SP-D Clone: IIIH3 Isotype: Mouse IgG1	Purified	E, P, WB	100 µg	CL7327AP
	Purified	E, P, WB	100 µg	CL7328AP
SP-D Clone: VIF9 Isotype: Mouse IgG1	Purified	E, P, WB	100 µg	CL7329AP
	Purified	E, P, WB	100 µg	CL7329AP
T cells (pan) Clone: OX-52 Isotype: Mouse IgG2a	Ascites	F, IP, C	0.5 mL	CL052A
	Purified	F, IP, C	250 µg	CL052AP
	Purified	F, IP, C	500 µg	CL052AP-2
	Biotin	F, C	100 µg	CL052B
	Biotin	F, C	500 µg	CL052B-5
	FITC	F	100 µg	CL052F
	FITC	F	500 µg	CL052F-5
TAU-1 Clone: PC1C6 Isotype: Mouse IgG2a	Purified	C, WB	100 µg	CLT9007

Specificity	Format	Applications	Size	Cat #
TCR (alpha/beta) Clone: R73 Isotype: Mouse IgG1	Purified	F, IP, C, FN	250 µg	CL057AP
	Purified	F, IP, C, FN	500 µg	CL057AP-2
	Biotin	F, C	100 µg	CL057B
	Biotin	F, C	500 µg	CL057B-5
	FITC	F	100 µg	CL057F
	FITC	F	500 µg	CL057F-5
	PE	F	50 µg	CL057PE
TCR (gamma/delta) Clone: V65 Isotype: Mouse IgG1	Purified	F, IP, FN, C	250 µg	CL056AP
	Purified	F, IP, FN, C	500 µg	CL056AP-2
	Biotin	F, C	100 µg	CL056B
	Biotin	F, C	500 µg	CL056B-5
	FITC	F	100 µg	CL056F
	FITC	F	500 µg	CL056F-5
Thrombocyte Clone: Polyclonal Isotype: Polyclonal Rabbit	Antiserum	CT, IV	5 mL	CLA41440
	Ads. Antiserum	CT, C, P	2 mL	CLAD41440
	FITC	F, IF, C	2 mg	CLFAD41440
Thy 1 Clone: Polyclonal Isotype: Polyclonal Rabbit	Serum	CT	1 mL	CL014A
Thy 1.1 (CD90) Clone: OX-7 Isotype: Mouse IgG1	Ascites	F, IP, P, C, FN	0.5 mL	CL005A
	Purified	F, IP, P, C, FN	250 µg	CL005AP
	Purified	F, IP, P, C, FN	500 µg	CL005AP-2
	Biotin	F, P, C	100 µg	CL005B
	Biotin	F, P, C	500 µg	CL005B-5
	FITC	F	100 µg	CL005F
	FITC	F	500 µg	CL005F-5
	PE	F	50 µg	CL005PE
	PE	F	200 µg	CL005PE-4
Thy 1.1 (CD90) Clone: 7C8 BB3 Isotype: Mouse IgM	Ascites	IF	0.5 mL	CL8500A
TNF-α (Tumor Necrosis Factor-α) Clone: Polyclonal Isotype: Rabbit IgG	Purified	N, E, WB	50 µg	CL9572AP
	Biotin	E	25 µg	CL9572B
	Recombinant		20 µg	CLR08
Transferrin Clone: Polyclonal Isotype: Polyclonal Rabbit	Antiserum	IP, ID	2 mL	CLA5240
	IgG Fraction	IP, ID	20 mg	CLAG5240
	FITC	IF, F	3 mg	CLFAG5240
von Willebrand Factor Clone: Polyclonal Isotype: Sheep IgG	Purified	IP, E, C	5 mg	CL20176A-R
	HRPO	WB	0.2 mg	CL20176HP-R

Legend for Applications:

AC	Affinity Chromatography
AGG	Agglutination
C	Cryostat Sections
CT	Cytotoxicity Assay
D	Depletion
E	ELISA
EC	ELISA (Capture)
ED	ELISA (Detection)
F	Flow Cytometry
FN	Functional Assay
IC	Immunocytochemistry
ID	Immunodiffusion
IF	Immunofluorescence
IP	Immunoprecipitation
IV	<i>In vivo</i> Assay
N	Neutralization
P	Paraffin-Embedded Sections
R	RIA
WB	Western Blotting

Secondary Reagents

! Please inquire about additional formats and azide free products.

Antibodies to Mouse Immunoglobulins

Specificity	Format	Size	Cat #
Ig (polyspecific) Host/Isotype: Rabbit	Lyophilized	2 mL	CL6002
	FITC	1 mL	CL6002F
IgG (H+L) (human adsorbed) Host/Isotype: Goat IgG	Purified	2 mL	CLCC30000
	FITC	2 mL	CLCC30001
	PE	0.5 mL	CLCC30004
	APC	0.5 mL	CLCC30005
	PE-Cy5	0.5 mL	CLCC30006
	HRPO	2 mL	CLCC30007
	Alk.Phos.	1 mL	CLCC30008
	Biotin	2 mL	CLCC30015
IgG (H+L) (human adsorbed) Host/Isotype: Goat F(ab') ₂	Purified	1 mg	CLCC35000
	FITC	0.5 mg	CLCC35001
	PE	0.5 mL	CLCC35004
	PE-Cy5	0.5 mL	CLCC35006
	HRPO	0.5 mg	CLCC35007
	Alk.Phos.	0.5 mg	CLCC35008
	Cy3	1 mL	CLCC35010
	Cy5	1 mL	CLCC35011
	Biotin	0.5 mg	CLCC35015
IgG (H+L) (rat adsorbed) Host/Isotype: Goat IgG	Purified	1 mL	CLCC30200
	FITC	1 mL	CLCC30201
	PE	0.5 mL	CLCC30204
	HRPO	1 mL	CLCC30207
	Alk.Phos.	1 mL	CLCC30208
	Biotin	1 mL	CLCC30215
IgM (μ) (human adsorbed) Host/Isotype: Goat IgG	Purified	1 mL	CLCC31500
	FITC	1 mL	CLCC31501
	PE	0.5 mL	CLCC31504
	APC	0.5 mL	CLCC31505
	HRPO	1 mL	CLCC31507
	Alk. Phos.	1 mL	CLCC31508
	Biotin	1 mL	CLCC31515

Antibodies to Rat Immunoglobulins

Specificity	Format	Size	Cat #
IgG (H+L) (mouse adsorbed) Host/Isotype: Goat IgG	Purified	1 mL	CLCC40000
	FITC	1 mL	CLCC40001
	Texas Red®	1 mL	CLCC40003
	PE	0.5 mL	CLCC40004
	APC	0.5 mL	CLCC40005
	PE-Cy5	0.5 mL	CLCC40006
	HRPO	1 mL	CLCC40007
	Alk.Phos.	1 mL	CLCC40008
	Biotin	1 mL	CLCC40015
IgG (H+L) (mouse adsorbed) Host/Isotype: Goat F(ab') ₂	Purified	2 mg	CLCC40100
	FITC	2 mg	CLCC40101
	HRPO	2 mg	CLCC40107
	Alk.Phos.	1 mg	CLCC40108
	Biotin	0.5 mg	CLCC40115
Ig (kappa chain) mAb: clone OX-12 Host/Isotype: Mouse IgG _{2a}	Ascites	0.5 mL	CL019A
	Purified	250 µg	CL019AP
	Purified	500 µg	CL019AP-2
	Biotin	100 µg	CL019B
	Biotin	500 µg	CL019B-5
	FITC	100 µg	CL019F
	FITC	500 µg	CL019F-5
	PE	50 µg	CL019PE
IgG2b (kappa chain) mAb: NORIg 7.16.2 Host/Isotype: Mouse IgG ₁	Purified	250 µg	CL094AP
	Biotin	100 µg	CL094B
	FITC	100 µg	CL094F
	PE	50 µg	CL094PE
IgM (µ chain) Host/Isotype: Goat IgG	Purified	1 mg	CLCC45000
	FITC	1 mg	CLCC45001
	PE	0.5 mg	CLCC45004

! Please inquire about additional formats and azide free products.

Antibodies to Rabbit Immunoglobulins

Specificity	Format	Size	Cat #
IgG (H+L) (human adsorbed)	Purified	2 mL	CLCC42000
	FITC	2 mL	CLCC42001
Host/Isotype: Goat IgG	PE	0.5 mL	CLCC42004
	HRPO	2 mL	CLCC42007
	Alk.Phos	1 mL	CLCC42008
	Biotin	2 mL	CLCC42015
IgG (H+L) (human adsorbed)	Purified	1 mL	CLCC43000
	FITC	0.5 mg	CLCC43001
Host/Isotype: Goat F(ab') ₂	PE	0.5 mL	CLCC43004
	HRPO	0.5 mg	CLCC43007
	Alk.Phos	0.5 mg	CLCC43008
	Biotin	0.5 mg	CLCC43015

Antibodies to Goat Immunoglobulins

Specificity	Format	Size	Cat #
IgG (H+L) (human/mouse adsorbed)	Purified	2 mL	CLCC50000
	FITC	2 mL	CLCC50001
Host/Isotype: Swine IgG	PE	0.5 mL	CLCC50004
	HRPO	2 mL	CLCC50007
	Alk.Phos	1 mL	CLCC50008
	Biotin	2 mL	CLCC50015

Antibodies to Hamster (Golden Syrian/Armenian) Immunoglobulins

Specificity	Format	Size	Cat #
IgG (H+L) (mouse/rat adsorbed)	Purified	0.5 mg	CLCC6200
	FITC	0.5 mg	CLCC6201
Host/Isotype: Swine IgG	PE	0.1 mg	CLCC6204
	HRPO	1 mL	CLCC6207
	Biotin	0.5 mg	CLCC6215

Antibodies to Sheep Immunoglobins

Specificity	Format	Size	Cat #
IgG (H+L)	FITC	0.5 mg	CLCC55001
	Alk. Phos.	0.5 mg	CLCC55008
	Biotin	0.5 mg	CLCC55015
Host/Isotype: Donkey IgG			

Antibodies to Human Immunoglobulins

Specificity	Format	Size	Cat #
IgG (H+L) Host/Isotype: Goat IgG	Purified	1 mL	CLCC20000
	FITC	1 mL	CLCC20001
	PE	0.5 mL	CLCC20004
	HRPO	1 mL	CLCC20007
	Biotin	1 mL	CLCC20015
IgG Fd mAb: clone HP6045 Host/Isotype: Mouse IgG1	Purified	200 µg	CL6045AP
	FITC	100 µg	CL6045F
	PE	50 µg	CL6045PE
	HRPO	100 µg	CL6045HP
	Biotin	100 µg	CL6045B
IgM (u chain) Host/Isotype: Goat IgG	Purified	2 mg	CLCC21000
	FITC	1 mg	CLCC21001
	HRPO	1 mg	CLCC21007
	Alk. Phos.	1 mg	CLCC21008
	Biotin	1 mg	CLCC21015
	Rhodamine	1 mg	CLCC21019
IgA (alpha chain) Host/Isotype: Goat IgG	Purified	2 mg	CLCC23000
	FITC	1 mg	CLCC23001
	HRPO	1 mg	CLCC23007
	Alk. Phos.	1 mg	CLCC23008
	Biotin	1 mg	CLCC23015
	Rhodamine	1 mg	CLCC23019

Streptavidin

Specificity	Format	Size	Cat #
Streptavidin (for use with biotin conjugated antibodies)	FITC	1 mL	CLCSA1001
	PE	0.5 mL	CLCSA1004-1
	PE	2.0 mL	CLCSA1004-4
	APC	0.5 mL	CLCSA1005
	PE-Cy5	0.5 mL	CLCSA1006
	HRPO	1 mL	CLCSA1007
	Alk.Phos.	1 mL	CLCSA1008
	Cy3	0.5 mL	CLCSA1010
	Cy5	0.5 mL	CLCSA1011
	PE-Cy7	0.2 mL	CLCSA1012
	APC-Cy7	0.5 mL	CLCSA1014

Isotypic Controls

! Please inquire about additional formats and azide free products.

Isotypic Controls

Description	Format	Size	Cat #
Chicken (Hen) IgY	Chicken IgY	100 mg	CLAS03-027
Goat IgG	Purified	2 mg	CLCC10200
	FITC	2 mg	CLCC10201
	PE	100 µg	CLCC10204
Hamster IgG	Purified	0.5 mL	CLCHM00
	FITC	0.5 mL	CLCHM01
	PE	0.5 mL	CLCHM04
	APC	0.5 mL	CLCHM05
	PE-Cy5	0.5 mL	CLCHM06
	Biotin	0.5 mL	CLCHM15
	Mouse IgG1	Purified	0.5 mL
	FITC	0.5 mL	CLCMG101
	PE	0.5 mL	CLCMG104
	APC	0.5 mL	CLCMG105
	PE-Cy5	0.5 mL	CLCMG106
	PE-Cy7	0.5 mL	CLCMG112
	APC-Cy7	0.5 mL	CLCMG114
	Biotin	0.5 mL	CLCMG115
Mouse IgG2a	Purified	0.5 mL	CLCMG2A00
	FITC	0.5 mL	CLCMG2A01
	PE	0.5 mL	CLCMG2A04
	APC	0.5 mL	CLCMG2A05
	PE-Cy5	0.5 mL	CLCMG2A06
	PE-Cy7	0.5 mL	CLCMG2A12
	APC-Cy7	0.5 mL	CLCMG2A14
	Biotin	0.5 mL	CLCMG2A15
Mouse IgG2b	Purified	0.5 mL	CLCMG2B00
	FITC	0.5 mL	CLCMG2B01
	PE	0.5 mL	CLCMG2B04
	APC	0.5 mL	CLCMG2B05
	PE-Cy5	0.5 mL	CLCMG2B06
	Biotin	0.5 mL	CLCMG2B15

Isotypic Controls

Description	Format	Size	Cat #
Mouse IgG3	Purified	0.5 mL	CLCMG300
	FITC	0.5 mL	CLCMG301
	PE	0.5 mL	CLCMG304
	APC	0.5 mL	CLCMG305
	PE-Cy5	0.5 mL	CLCMG306
Mouse IgM	Purified	0.5 mL	CLCMGM00
	FITC	0.5 mL	CLCMGM01
	PE	0.5 mL	CLCMGM04
	Biotin	0.5 mL	CLCMGM15
Rat IgG1	Purified	0.5 mL	CLCR100
	FITC	0.5 mL	CLCR101
	PE	0.5 mL	CLCR104
	APC	0.5 mL	CLCR105
	PE-Cy5	0.5 mL	CLCR106
	Biotin	0.5 mL	CLCR115
Rat IgG2a	Purified	0.5 mL	CLCR2A00
	FITC	0.5 mL	CLCR2A01
	PE	0.5 mL	CLCR2A04
	APC	0.5 mL	CLCR2A05
	PE-Cy5	0.5 mL	CLCR2A06
	PE-Cy7	0.5 mL	CLCR2A12
	APC-Cy7	0.5 mL	CLCR2A14
	Biotin	0.5 mL	CLCR2A15
Rat IgG2b	Purified	0.5 mL	CLCR2B00
	FITC	0.5 mL	CLCR2B01
	PE	0.5 mL	CLCR2B04
	APC	0.5 mL	CLCR2B05
	PE-Cy5	0.5 mL	CLCR2B06
	Biotin	0.5 mL	CLCR2B15
Rat IgG2c	Purified	0.5 mL	CLCR2C00
Rat IgM	Purified	0.5 mL	CLCRGM00
	FITC	0.5 mL	CLCRGM01
	PE	0.5 mL	CLCRGM04
	Biotin	0.5 mL	CLCRGM15

! Please inquire about additional formats and azide free products.

Negative Controls

Description	Format	Size	Cat #
Goat IgG (non-immune)	Purified	10 mg	CLGT00
Rabbit IgG (non-immune)	Purified	10 mg	CLRB00
Sheep IgG (non-immune)	Purified	20 mg	CLSP00
Sheep IgG	FITC	0.5 mL	CLSP01

Control Ascites Fluid

Description	Format	Size	Cat #
Balb/c control ascites fluid-MA (mice injected with SP2/0 myeloma)	Lyophilized	1 mL	CL8100
Balb/c control ascites fluid-CFA (mice injected with Complete Freund's Adjuvant)	Lyophilized	1 mL	CL8200

Index

Cat #	Size	Price (USD)
CL00110K-48	48T	205
CL00110K-96	96T	290
CL00111K-48	48T	205
CL00111K-96	96T	290
CL001A	0.5 mL	299
CL001AP	250 µg	129
CL001AP-2	500 µg	226
CL001B	100 µg	124
CL001B-5	500 µg	279
CL001F	100 µg	124
CL001F-5	500 µg	372
CL001PE	50 µg	117
CL001PE-4	200 µg	334
CL002A	0.5 mL	299
CL002AP	250 µg	129
CL002AP-2	500 µg	226
CL002B	100 µg	124
CL002B-5	500 µg	279
CL002F	100 µg	124
CL002F-5	500 µg	372
CL002PE	50 µg	117
CL003A	0.5 mL	299
CL003AP	250 µg	129
CL003AP-2	500 µg	226
CL003APC	100 µg	268
CL003B	100 µg	124
CL003B-5	500 µg	279
CL003F	100 µg	124
CL003F-5	500 µg	372
CL003PE	50 µg	117
CL003PE-4	200 µg	334
CL004A	0.5 mL	299
CL004AP	250 µg	129
CL004AP-2	500 µg	226
CL004B	100 µg	124
CL004B-5	500 µg	279
CL004F	100 µg	124
CL004F-5	500 µg	372

Cat #	Size	Price (USD)
CL004PE	50 µg	117
CL004PE-4	200 µg	334
CL004TC	100 µg	519
CL005A	0.5 mL	299
CL005AP	250 µg	129
CL005AP-2	500 µg	226
CL005B	100 µg	124
CL005B-5	500 µg	279
CL005F	100 µg	124
CL005F-5	500 µg	372
CL005LE	500 µg	249
CL005LE-2	1 mg	399
CL005PE	50 µg	117
CL005PE-4	200 µg	334
CL006A	0.5 mL	299
CL006AP	250 µg	129
CL006AP-2	500 µg	226
CL006B	100 µg	124
CL006B-5	500 µg	279
CL006F	100 µg	124
CL006F-5	500 µg	372
CL006PE	50 µg	117
CL007A	0.5 mL	299
CL007AP	250 µg	129
CL007AP-2	500 µg	226
CL007B	100 µg	124
CL007B-5	500 µg	279
CL007F	100 µg	124
CL007F-5	500 µg	372
CL008A	0.5 mL	299
CL008AP	250 µg	129
CL008AP-2	500 µg	226
CL008B	100 µg	124
CL008B-5	500 µg	279
CL008F	100 µg	124
CL008F-5	500 µg	372
CL008PE	50 µg	117
CL008PE-4	200 µg	334

Cat #	Size	Price (USD)
CL009A	0.5 mL	299
CL009AP	250 µg	129
CL009AP-2	500 µg	226
CL009B	100 µg	124
CL009B-5	500 µg	279
CL009F	100 µg	124
CL009F-5	500 µg	372
CL009PE	50 µg	117
CL009PE-4	200 µg	334
CL010A	0.5 mL	299
CL010AP	250 µg	129
CL010AP-2	500 µg	226
CL010B	100 µg	124
CL010B-5	500 µg	279
CL010F	100 µg	124
CL010F-5	500 µg	372
CL010PE	50 µg	117
CL010PE-4	200 µg	334
CL011A	0.5 mL	299
CL011AP	250 µg	129
CL011AP-2	500 µg	226
CL011B	100 µg	124
CL011B-5	500 µg	279
CL011F	100 µg	124
CL011F-5	500 µg	372
CL011PE	50 µg	117
CL012A	0.5 mL	299
CL012AP	250 µg	137
CL012APC	100 µg	180
CL012B	100 µg	98
CL012B-3	300 µg	194
CL012F	100 µg	89
CL012F-3	300 µg	194
CL012PE	50 µg	78
CL012PE-3	300 µg	279
CL013AP	200 µg	252
CL013APC	100 µg	299
CL013B	100 µg	163

Cat #	Size	Price (USD)
CL013B-3	300 µg	358
CL013F	100 µg	163
CL013F-3	300 µg	358
CL013PE	50 µg	163
CL013PE-3	300 µg	596
CL014A	1 mL	153
CL015A	1 mL	153
CL016AP	200 µg	206
CL016B	100 µg	175
CL016B-3	300 µg	433
CL016F	100 µg	105
CL016F-3	300 µg	248
CL016PE	50 µg	194
CL016PE-3	300 µg	649
CL016TC	100 µg	273
CL017AP	250 µg	129
CL017B	100 µg	124
CL017B-5	500 µg	279
CL017F	100 µg	124
CL017F-5	500 µg	372
CL017PE	50 µg	117
CL017PE-4	200 µg	334
CL018AP	200 µg	179
CL018B	100 µg	130
CL018F	100 µg	179
CL018PE	50 µg	150
CL019A	0.5 mL	299
CL019AP	250 µg	129
CL019AP-2	500 µg	226
CL019B	100 µg	124
CL019B-5	500 µg	279
CL019F	100 µg	124
CL019F-5	500 µg	372
CL019PE	50 µg	117
CL020AP	200 µg	179
CL020F	100 µg	149
CL022A	0.5 mL	299
CL022AP	250 µg	129
CL022AP-2	500 µg	226
CL022B	100 µg	124
CL022B-5	500 µg	279
CL022F	100 µg	124
CL022F-5	500 µg	372
CL022PE	50 µg	117
CL027A	0.5 mL	299
CL027AP	250 µg	129
CL027AP-2	500 µg	226

Cat #	Size	Price (USD)
CL027B	100 µg	124
CL027B-5	500 µg	279
CL027F	100 µg	124
CL027F-5	500 µg	372
CL028AP	250 µg	129
CL028AP-2	500 µg	226
CL028B	100 µg	124
CL028B-5	500 µg	279
CL028F	100 µg	124
CL028F-5	500 µg	372
CL031AP	250 µg	139
CL031B	100 µg	136
CL031F	100 µg	136
CL031PE	50 µg	128
CL033A	0.5 mL	299
CL033AP	250 µg	129
CL033AP-2	500 µg	226
CL033B	100 µg	124
CL033B-5	500 µg	279
CL033F	100 µg	124
CL033F-5	500 µg	372
CL033PE	50 µg	117
CL034A	0.5 mL	299
CL034AP	250 µg	129
CL034AP-2	500 µg	226
CL034B	100 µg	124
CL034B-5	500 µg	279
CL034F	100 µg	124
CL034F-5	500 µg	372
CL034PE	50 µg	117
CL034PE-4	200 µg	334
CL038A	0.5 mL	299
CL039A	0.5 mL	299
CL039AP	250 µg	129
CL039AP-2	500 µg	226
CL039B	100 µg	124
CL039B-5	500 µg	279
CL039F	100 µg	124
CL039F-5	500 µg	372
CL039PE	50 µg	117
CL039PE-4	200 µg	334
CL040AP	250 µg	129
CL040B	100 µg	124
CL040F	100 µg	124
CL040PE	50 µg	117
CL041A	0.5 mL	299
CL041AP	250 µg	129

Cat #	Size	Price (USD)
CL041B	100 µg	124
CL041B-5	500 µg	279
CL041F	100 µg	124
CL041F-5	500 µg	372
CL041PE	50 µg	128
CL041PE-4	200 µg	334
CL042A	0.5 mL	299
CL042AP	250 µg	129
CL042AP-2	500 µg	226
CL042APC	100 µg	269
CL042B	100 µg	124
CL042B-5	500 µg	279
CL042F	100 µg	124
CL042F-5	500 µg	372
CL042PE	50 µg	117
CL042PE-4	200 µg	334
CL043A	0.5 mL	299
CL043AP	250 µg	129
CL043AP-2	500 µg	226
CL043B	100 µg	124
CL043B-5	500 µg	307
CL043F	100 µg	124
CL043F-5	500 µg	372
CL043PE	50 µg	117
CL044A	0.5 mL	299
CL044AP	250 µg	129
CL044AP-2	500 µg	226
CL044B	100 µg	124
CL044B-5	500 µg	307
CL044F	100 µg	124
CL044F-5	500 µg	372
CL045AP	250 µg	129
CL045B	100 µg	124
CL045B-5	500 µg	279
CL045F	100 µg	124
CL045F-5	500 µg	372
CL045PE	50 µg	117
CL045PE-4	200 µg	334
CL052A	0.5 mL	299
CL052AP	250 µg	129
CL052AP-2	500 µg	226
CL052B	100 µg	124
CL052B-5	500 µg	279
CL052F	100 µg	124
CL052F-5	500 µg	372
CL054AP	200 µg	179
CL054B	100 µg	179

Cat #	Size	Price (USD)
CL055AP	250 µg	129
CL055AP-2	500 µg	226
CL055B	100 µg	124
CL055B-5	500 µg	279
CL055F	100 µg	124
CL055F-5	500 µg	372
CL055PE	50 µg	117
CL056AP	250 µg	129
CL056AP-2	500 µg	226
CL056B	100 µg	124
CL056B-5	500 µg	279
CL056F	100 µg	124
CL056F-5	500 µg	372
CL057AP	250 µg	129
CL057AP-2	500 µg	226
CL057B	100 µg	124
CL057B-5	500 µg	279
CL057F	100 µg	124
CL057F-5	500 µg	372
CL057PE	50 µg	117
CL061AP	250 µg	129
CL061B	100 µg	124
CL061B-5	500 µg	279
CL061F	100 µg	124
CL061F-5	500 µg	372
CL061PE	50 µg	117
CL061PE-4	200 µg	334
CL064AP	250 µg	139
CL064B	100 µg	136
CL064F	100 µg	136
CL071A	0.5 mL	299
CL071AP	250 µg	129
CL071AP-2	500 µg	226
CL071B	100 µg	124
CL071B-5	500 µg	279
CL071F	100 µg	124
CL071F-5	500 µg	372
CL080AP	200 µg	348
CL080B	100 µg	175
CL080PE	50 µg	271
CL080PE-3	300 µg	1026
CL081AP	250 µg	129
CL081B	100 µg	124
CL081F	100 µg	124
CL081PE	50 µg	117
CL082A	0.5 mL	299
CL082AP	250 µg	129

Cat #	Size	Price (USD)
CL082B	100 µg	124
CL082B-5	500 µg	279
CL082F	100 µg	124
CL082F-5	500 µg	372
CL082PE	50 µg	117
CL082PE-4	200 µg	334
CL083A	0.5 mL	299
CL083AP	250 µg	129
CL083F	100 µg	124
CL083F-5	500 µg	372
CL085A	0.5 mL	299
CL085AP	250 µg	129
CL085B	100 µg	124
CL085B-5	500 µg	279
CL085F	100 µg	124
CL085F-5	500 µg	372
CL085PE	50 µg	117
CL085PE-4	200 µg	334
CL086AP	200 µg	282
CL086B	100 µg	175
CL086F	100 µg	105
CL086PE	50 µg	271
CL086PE-3	300 µg	1026
CL089AP	250 µg	129
CL089B	100 µg	124
CL089B-5	500 µg	279
CL089F	100 µg	124
CL089F-5	500 µg	372
CL090AP	250 µg	129
CL090B	100 µg	124
CL090B-5	500 µg	279
CL090F	100 µg	124
CL090F-5	500 µg	372
CL090PE	50 µg	117
CL090PE-4	200 µg	334
CL091AP	250 µg	129
CL091B	100 µg	124
CL091B-5	500 µg	279
CL091F	100 µg	124
CL091F-5	500 µg	372
CL091PE	50 µg	117
CL091PE-4	200 µg	334
CL093AP	100 µg	175
CL094AP	250 µg	149
CL094B	100 µg	124
CL094F	100 µg	124
CL094PE	50 µg	110

Cat #	Size	Price (USD)
CL10008AP	200 µg	407
CL10009AP	50 µg	299
CL10010AP	50 µg	341
CL101	10 Col.	224
CL101-2	2 Col.	224
CL101-5	5 Col.	140
CL102	10 Col.	224
CL102-2	2 Col.	224
CL102-5	5 Col.	140
CL102-5PS	5 Col.	199
CL111	10 Col.	341
CL111-2	2 Col.	341
CL111-5	5 Col.	201
CL112	10 Col.	285
CL112-2	2 Col.	285
CL112-5	5 Col.	201
CL112-5PS	5 Col.	253
CL121	10 Col.	341
CL121-2	2 Col.	341
CL121-5	5 Col.	201
CL122	10 Col.	341
CL122-2	2 Col.	341
CL122-5	5 Col.	201
CL122-5PS	5 Col.	303
CL131	10 Col.	341
CL131-2	2 Col.	341
CL131-5	5 Col.	282
CL168AP	200 µg	252
CL168APC	100 µg	299
CL168B	100 µg	163
CL168B-3	300 µg	358
CL168F	100 µg	163
CL168F-3	300 µg	358
CL168PE	50 µg	163
CL168PE-3	300 µg	602
CL168TC	100 µg	307
CL169A	0.5 mL	299
CL169AP	250 µg	144
CL169APC	100 µg	269
CL169B	100 µg	83
CL169B-3	300 µg	204
CL169F	100 µg	94
CL169F-3	300 µg	204
CL169LE	500 µg	249
CL169PE	50 µg	78
CL169PE-3	300 µg	279
CL2001	1 mL	72

Cat #	Size	Price (USD)
CL2005	5 mL	216
CL20176A-R	5 mg	170
CL20176HP-R	0.2 mg	201
CL2201	1 mL	72
CL2205	5 mL	216
CL2301	1 mL	72
CL2305	5 mL	216
CL2721AP	200 µg	198
CL2722AP	200 µg	198
CL2810AP	100 µL	391
CL2811AP	100 µL	651
CL2812AP	100 µL	491
CL2814AP	100 µL	511
CL2814AP-0.05	50 µL	312
CL2815AP	100 µL	511
CL2815AP-0.05	50 µL	312
CL2816AP	100 µL	511
CL2816AP-0.05	50 µL	312
CL2817AP	100 µL	511
CL2817AP-0.05	50 µL	312
CL2818AP	100 µL	511
CL2818AP-0.05	50 µL	312
CL2819AP	100 µL	491
CL2819AP-0.05	50 µL	300
CL2820AP	100 µL	451
CL2820AP-0.05	50 µL	276
CL2821AP	100 µL	511
CL2822AP	100 µL	511
CL3005	5x5 mL	35
CL3010	100 mL	109
CL3051	5x1 mL	109
CL3061	3x1 mL	109
CL3111	25x1 mL	46
CL3112	10x2 mL	44
CL3115	5x5 mL	32
CL3120	5x20 mL	118
CL31A3	200 µL	234
CL3221	10x1 mL	57
CL3225	5x5 mL	89
CL3305	2x5 mL	55
CL3310	100 mL	129
CL3331	10x1 mL	53
CL3335	2x5 mL	50
CL3441	10x1 mL	109
CL3441-S	1 mL	23
CL3441-S100	100 mL	915
CL3441-S50	50 mL	495

Cat #	Size	Price (USD)
CL3442	2 mL	22
CL4051	5x1 mL	85
CL4555	5x5 mL	179
CL5000	5x5 mL	169
CL5000-1	5x1 mL	59
CL5010	5x30 mL	43
CL50141AP	0.5 mL	396
CL5015	100 mL	20
CL50151AP	0.5 mL	396
CL5016	6x100 mL	88
CL5020	500 mL	66
CL50241AP	0.5 mL	396
CL50251AP	0.5 mL	396
CL5026	6x500 mL	348
CL5030	5x30 mL	142
CL5031	100 mL	85
CL50341AP	0.5 mL	396
CL5035	500 mL	390
CL5040	5x30 mL	135
CL5041	100 mL	85
CL50441AP	0.5 mL	396
CL5045	500 mL	390
CL50451AP	0.5 mL	396
CL5050	5x30 mL	135
CL50541AP	0.5 mL	396
CL5070	100 mL	41
CL5071	250 mL	82
CL5095	500 mL	158
CL5110	5x30 mL	117
CL5115	100 mL	63
CL5120	500 mL	282
CL54851AP	0.5 mL	396
CL54941AP	0.5 mL	396
CL54951AP	0.5 mL	396
CL55041AP	0.5 mL	396
CL6002	2 mL	48
CL6002F	1 mL	128
CL6005A	0.5 mL	299
CL6045AP	200 µg	185
CL6045B	100 µg	141
CL6045F	100 µg	151
CL6045HP	100 µg	168
CL6045PE	50 µg	140
CL7200A	0.5 mL	299
CL7200AP	250 µg	116
CL7200APC	0.1 mg	250
CL7200B	100 µg	79

Cat #	Size	Price (USD)
CL7200B-3	300 µg	194
CL7200F	100 µg	89
CL7200F-3	300 µg	194
CL7200PE	50 µg	86
CL7200PE-3	300 µg	306
CL7200TC	0.1 mg	200
CL7201A	0.5 mL	299
CL7201AP	250 µg	150
CL7201B	100 µg	87
CL7201B-3	300 µg	214
CL7201F	100 µg	98
CL7201F-3	300 µg	214
CL7201PE	50 µg	86
CL7201PE-3	300 µg	306
CL7201TC	100 µg	245
CL7202A	0.5 mL	299
CL7202AP	250 µg	150
CL7202AP-2	500 µg	219
CL7202B	100 µg	87
CL7202B-3	300 µg	214
CL7202F	100 µg	98
CL7202F-3	300 µg	214
CL7202LE	500 µg	249
CL7203AP	200 µg	317
CL7203B	100 µg	175
CL7203B-3	300 µg	433
CL7203F	100 µg	209
CL7203F-3	300 µg	441
CL7207AP	200 µg	246
CL7207F	100 µg	150
CL7213AP	200 µg	259
CL7213APC	100 µg	329
CL7213B	100 µg	151
CL7213F	100 µg	157
CL7213PE	50 µg	172
CL7214AP	200 µg	259
CL7214APC	100 µg	329
CL7214B	100 µg	126
CL7214F	100 µg	105
CL7214PE	50 µg	172
CL7214TC	100 µg	368
CL7220AP	250 µg	196
CL7220B	100 µg	113
CL7220B-3	300 µg	278
CL7220F	100 µg	128
CL7220F-3	300 µg	278
CL7220PE	50 µg	88

Cat #	Size	Price (USD)
CL7220PE-3	300 µg	314
CL7230AP	250 µg	196
CL7230B	100 µg	113
CL7230B-3	300 µg	278
CL7230F	100 µg	128
CL7230F-3	300 µg	278
CL7230PE	50 µg	88
CL7230PE-3	300 µg	314
CL7300AP	100 µg	357
CL7301AP	100 µg	357
CL7302AP	100 µg	357
CL7303AP	100 µg	357
CL7326AP	100 µg	397
CL7327AP	100 µg	325
CL7328AP	100 µg	325
CL7329AP	100 µg	325
CL7330AP	100 µg	337
CL7333AP	100 µg	310
CL7334AP	100 µg	310
CL7335AP	100 µg	310
CL7336R	50 µg	357
CL7337R	50 µg	357
CL7501AP	250 µg	245
CL7501B	100 µg	141
CL7501F	100 µg	160
CL7501PE	50 µg	139
CL7503AP	250 µg	245
CL7503AP-2	500 µg	357
CL7503APC	100 µg	270
CL7503B	100 µg	141
CL7503F	100 µg	160
CL7503NA	1 mg	637
CL7503PE	50 µg	139
CL7503TRC	100 µg	176
CL7504AP	250 µg	245
CL7504AP-2	500 µg	357
CL7504B	100 µg	141
CL7504F	100 µg	160
CL7504NA	1 mg	637
CL7505	100 µg	316
CL7506	100 µg	316
CL7540AP	250 µg	168
CL7540B	100 µg	97
CL7540F	100 µg	110
CL7540PE	50 µg	95
CL7588AP	250 µg	179
CL7588B	100 µg	118

Cat #	Size	Price (USD)
CL7588F	100 µg	118
CL7588NA	1 mg	468
CL7588PE	50 µg	95
CL76001K	596T	45
CL76002K	1096T	107
CL76003K	50T	45
CL76004K	50T	56
CL7631AP	250 µg	245
CL7631APC	100 µg	280
CL7631B	100 µg	141
CL7631F	100 µg	160
CL7631PE	50 µg	140
CL7632AP	250 µg	245
CL7632B	100 µg	141
CL7632F	100 µg	160
CL7632PE	50 µg	140
CL7800AP	200 µg	317
CL7800B	100 µg	175
CL7800B-3	300 µg	433
CL7800F	100 µg	209
CL7800F-3	300 µg	441
CL7800PE	50 µg	194
CL7800PE-3	300 µg	726
CL8100	1 mL	119
CL8200	1 mL	119
CL8500A	0.5 mL	299
CL8600	1 mL	58
CL8600A	0.5 mL	299
CL8600AP	250 µg	150
CL8600APC	100 µg	249
CL8600B	100 µg	87
CL8600B-3	300 µg	214
CL8600F	100 µg	98
CL8600F-3	300 µg	214
CL8600PE	50 µg	86
CL8600PE-3	300 µg	306
CL8610AP	250 µg	164
CL8610B	100 µg	95
CL8610B-3	300 µg	233
CL8610F	100 µg	107
CL8610F-3	300 µg	233
CL8610PE	50 µg	93
CL8610PE-3	300 µg	334
CL8625APC	100 µg	250
CL8700	5 mL	229
CL8700A	0.5 mL	299
CL8701	1 mL	339

Cat #	Size	Price (USD)
CL8701F	0.5 mL	111
CL8702A	0.5 mL	299
CL8702AP	250 µg	157
CL8702B	100 µg	115
CL8702F	100 µg	115
CL8702PE	50 µg	104
CL8704A	0.5 mL	299
CL8704AP	250 µg	157
CL8704B	100 µg	131
CL8704F	100 µg	115
CL8705	5 mL	99
CL8705A	0.5 mL	299
CL8705AP	250 µg	157
CL8705B	100 µg	115
CL8705F	100 µg	115
CL8705PE	50 µg	104
CL8706A	1 mL	299
CL8707A	1 mL	299
CL8708A	1 mL	299
CL8708AP	250 µg	157
CL8708B	100 µg	115
CL8708F	100 µg	115
CL8708PE	50 µg	104
CL8709A	1 mL	299
CL8709AP	250 µg	157
CL8709B	100 µg	115
CL8709F	100 µg	115
CL8709PE	50 µg	104
CL8712A	0.5 mL	299
CL8712B	100 µg	115
CL8712F	100 µg	115
CL8712PE	50 µg	104
CL8713A	0.5 mL	299
CL8713B	100 µg	115
CL8713F	100 µg	115
CL8713PE	50 µg	104
CL8818AP	100 µg	179
CL8888AP	500 µg	153
CL8888F	100 µg	115
CL89000K	1096T	205
CL8900AP	200 µg	325
CL8900B	100 µg	270
CL8900B-3	300 µg	595
CL8900F	100 µg	270
CL8900F-3	300 µg	595
CL8900PE	50 µg	207
CL8900PE-3	300 µg	827

Cat #	Size	Price (USD)
CL8901B	100 µg	175
CL8901B-3	300 µg	433
CL8902A	0.5 mL	299
CL8904AP	250 µg	164
CL8904B	100 µg	95
CL8904F	100 µg	107
CL8904PE	50 µg	93
CL8905A	0.5 mL	299
CL8906A	0.5 mL	299
CL8907A	0.5 mL	299
CL8908A	0.5 mL	299
CL8909A	0.5 mL	299
CL8910AP	200 µg	317
CL8910B	100 µg	175
CL8910B-3	300 µg	433
CL8910F	100 µg	209
CL8910F-3	300 µg	441
CL8910PE	50 µg	218
CL8910PE-3	300 µg	875
CL8911	1 mL	87
CL89111K-48	48T	231
CL89111K-500	596T	1156
CL89111K-96	96T	322
CL89113K-48	48T	231
CL89113K-500	596T	1156
CL89113K-96	96T	324
CL8911A	0.5 mL	299
CL8911AP	250 µg	157
CL89120K-480T	480T	1399
CL89120K-96T	96T	380
CL89122K-48	48T	205
CL89122K-96	96T	290
CL89123K-48	48T	231
CL89123K-96	96T	356
CL89124K-48	48T	205
CL89124K-96	96T	290
CL89125K-48	48T	231
CL89125K-96	96T	356
CL89126K-48	48T	231
CL89126K-96	96T	356
CL89127K-48	48T	205
CL89127K-96	96T	290
CL8912A	1 mL	299
CL8912AP	250 µg	157
CL8912B	100 µg	91
CL8912B-3	300 µg	223
CL8912F	100 µg	103

Cat #	Size	Price (USD)
CL8912F-3	300 µg	223
CL8912PE	50 µg	86
CL8912PE-3	300 µg	306
CL89130K-48	48T	205
CL89130K-96	96T	290
CL89131K-48	48T	205
CL89131K-96	96T	290
CL89132K-48	48T	205
CL89132K-96	96T	290
CL89133K-48	48T	205
CL89133K-96	96T	290
CL89134K-48	48T	205
CL89134K-96	96T	290
CL89135K-48	48T	205
CL89135K-96	96T	290
CL89136K-48	48T	205
CL89136K-96	96T	290
CL89137K-48	48T	205
CL89137K-96	96T	290
CL89138K-48	48T	205
CL89138K-96	96T	290
CL89139K-48	48T	205
CL89139K-96	96T	290
CL89141	100 µg	394
CL89144	100 µg	284
CL89145	100T	204
CL89145B	100 µg	290
CL89145F	100 µg	290
CL89145PE	50 µg	325
CL89146	100 µg	347
CL89147	100 µg	458
CL89148	100 µg	316
CL89149	100 µg	394
CL89149B	100 µg	276
CL89149F	100 µg	276
CL8914AP	200 µg	139
CL8914F	100 µg	126
CL8914F-3	300 µg	279
CL8914PE	50 µg	94
CL8914PE-3	300 µg	317
CL89152	100 µg	189
CL89152B	100 µg	458
CL89154	200 µg	309
CL8915A	0.5 mL	299
CL8915AP	250 µg	157
CL8915B	100 µg	91
CL8915B-3	300 µg	223

Cat #	Size	Price (USD)
CL8915F	100 µg	103
CL8915F-3	300 µg	223
CL8915PE	50 µg	86
CL8915PE-3	300 µg	306
CL8916AP	200 µg	317
CL8916F	0.5 mg	280
CL8916F-3	300 µg	441
CL8916PE	0.1 mg	190
CL8916PE-3	300 µg	649
CL89170AP	100 µg	202
CL89172PE	100 µg	501
CL8917AP	0.5 mg	220
CL8917F	0.5 mg	280
CL8917F-3	300 µg	441
CL8917PE	0.1 mg	145
CL8917PE-3	300 µg	649
CL8918A	0.5 mL	299
CL8918AP	250 µg	157
CL8918B	100 µg	91
CL8918B-3	300 µg	223
CL8918F	100 µg	103
CL8918F-3	300 µg	223
CL8918PE	50 µg	86
CL8918PE-3	300 µg	306
CL8919A	0.5 mL	299
CL8919AP	250 µg	157
CL8919B	100 µg	91
CL8919B-3	300 µg	223
CL8919F	100 µg	103
CL8919F-3	300 µg	223
CL8919PE	50 µg	86
CL8919PE-3	300 µg	306
CL8921	1 mL	80
CL8921A	0.5 mL	299
CL8921AP	250 µg	157
CL8921B	100 µg	91
CL8921B-3	300 µg	223
CL8921F	100 µg	103
CL8921F-3	300 µg	223
CL8922	1 mL	80
CL8922A	0.5 mL	299
CL8922AP	250 µg	157
CL8922F	100 µg	103
CL8922F-3	300 µg	223
CL8923AP	200 µg	206
CL8923B	100 µg	260
CL8923B-3	300 µg	433

Cat #	Size	Price (USD)
CL8923PE	50 µg	129
CL8923PE-3	300 µg	919
CL8924A	0.5 mL	299
CL8925A	0.5 mL	299
CL8925AP	250 µg	137
CL8925B	100 µg	79
CL8925B-3	300 µg	194
CL8925F	100 µg	89
CL8925F-3	300 µg	194
CL8925PE	50 µg	86
CL8925PE-3	300 µg	306
CL8926AP	250 µg	137
CL8926B	100 µg	79
CL8926B-3	300 µg	194
CL8926F	100 µg	89
CL8926F-3	300 µg	194
CL8926LE	500 µg	249
CL8926PE	50 µg	86
CL8926PE-3	300 µg	306
CL8927A	0.5 mL	299
CL8927AP	250 µg	171
CL8927AP-2	500 µg	249
CL8927APC	100 µg	265
CL8927B	100 µg	98
CL8927B-3	300 µg	243
CL8927F	100 µg	112
CL8927F-3	300 µg	243
CL8927NA	1 mg	295
CL8927PE	50 µg	86
CL8927PE-3	300 µg	306
CL8928AP	200 µg	172
CL8928B	100 µg	175
CL8928B-3	300 µg	433
CL8928F	100 µg	209
CL8928F-3	300 µg	441
CL8928PE	50 µg	194
CL8928PE-3	300 µg	649
CL8930AP	200 µg	172
CL8930F	100 µg	209
CL8930F-3	300 µg	248
CL8930PE	50 µg	194
CL8930PE-3	300 µg	649
CL8931	1 mL	76
CL8931A	0.5 mL	299
CL8932AP	200 µg	317
CL8932B	0.5 mg	260
CL8932B-3	300 µg	433

Cat #	Size	Price (USD)
CL8932PE	0.1 mg	155
CL8932TC	0.1 mg	225
CL8934AP	200 µg	226
CL8934PE	50 µg	159
CL8934PE-3	300 µg	783
CL8936AP	250 µg	150
CL8936AP-2	500 µg	219
CL8936B	100 µg	87
CL8936B-3	300 µg	214
CL8936F	100 µg	98
CL8936F-3	300 µg	214
CL8936PE	50 µg	86
CL8936PE-3	300 µg	306
CL8937AP	0.5 mg	265
CL8937B	0.5 mg	280
CL8937F	0.5 mg	300
CL8937PE	0.1 mg	180
CL8938AP	200 µg	189
CL8938B	100 µg	142
CL8938B-3	300 µg	312
CL8938F	100 µg	142
CL8938F-3	300 µg	312
CL8938PE	50 µg	142
CL8938PE-3	300 µg	493
CL8939AP	200 µg	164
CL8939B	100 µg	80
CL8939B-3	300 µg	231
CL8939PE	50 µg	106
CL8939PE-3	300 µg	471
CL8940AP	200 µg	207
CL8940B	100 µg	279
CL8940B-3	300 µg	449
CL8940F	100 µg	279
CL8940F-3	300 µg	449
CL8940PE	50 µg	149
CL8940PE-3	300 µg	598
CL8941A	0.5 mL	299
CL8941AP	250 µg	137
CL8941APC	100 µg	210
CL8941B	100 µg	79
CL8941B-3	300 µg	194
CL8941F	100 µg	89
CL8941F-3	300 µg	194
CL8941LE	500 µg	249
CL8941PE	50 µg	86
CL8941PE-3	300 µg	306
CL8941TC	0.1 mg	250

Cat #	Size	Price (USD)
CL8942AP	100 µg	145
CL8942B	100 µg	168
CL8942B-3	300 µg	388
CL8942F	100 µg	168
CL8942F-3	300 µg	374
CL8942LE	500 µg	249
CL8943AP	100 µg	118
CL8943AP-3	300 µg	267
CL8943B	100 µg	168
CL8943B-3	300 µg	388
CL8943F	100 µg	168
CL8943F-3	300 µg	374
CL8943PE	50 µg	138
CL8943PE-3	300 µg	306
CL8944AP	250 µg	150
CL8944APC	100 µg	225
CL8944B	100 µg	87
CL8944B-3	300 µg	214
CL8944F	100 µg	98
CL8944F-3	300 µg	214
CL8944PE	50 µg	86
CL8944PE-3	300 µg	306
CL8945APC	0.1 mg	215
CL8946AP	200 µg	172
CL8946B	100 µg	101
CL8946B-3	300 µg	292
CL8946F	100 µg	126
CL8946F-3	300 µg	248
CL8946PE	50 µg	102
CL8946PE-3	300 µg	479
CL8947AP	250 µg	150
CL8947B	100 µg	87
CL8947B-3	300 µg	214
CL8947F	100 µg	98
CL8947F-3	300 µg	214
CL8947PE	50 µg	86
CL8947PE-3	300 µg	306
CL8947TC	100 µg	258
CL8948AP	200 µg	196
CL8948B	100 µg	105
CL8948B-3	300 µg	289
CL8948PE	50 µg	105
CL8948PE-3	300 µg	476
CL8949AP	250 µg	149
CL8949B	100 µg	124
CL8949F	100 µg	124
CL8949PE	50 µg	110

Cat #	Size	Price (USD)
CL8950AP	250 µg	185
CL8950F	100 µg	139
CL8950PE	50 µg	151
CL8951AP	200 µg	317
CL8951B	100 µg	84
CL8951B-3	300 µg	243
CL8952A	0.5 mL	299
CL8953AP	200 µg	317
CL8953B	100 µg	175
CL8953B-3	300 µg	433
CL8953PE	50 µg	271
CL8953PE-3	300 µg	1026
CL8954AP	0.5 mg	180
CL8954B	0.5 mg	250
CL8954F	0.5 mg	280
CL8954PE	0.1 mg	195
CL8955	1 mL	265
CL8955AP	200 µg	214
CL8955B	100 µg	260
CL8955B-3	300 µg	494
CL8957AP	100 µg	350
CL8957PE	50 µg	236
CL8959	0.5 mL	89
CL8960AP	250 µg	137
CL8960F	100 µg	89
CL8960F-3	300 µg	194
CL8961AP	200 µg	317
CL8961PE	50 µg	218
CL8962AP	200 µg	172
CL8962B	100 µg	84
CL8962F	100 µg	105
CL8962PE	0.1 mg	200
CL8963AP	250 µg	165
CL8963B	100 µg	96
CL8963F	100 µg	109
CL8963PE	50 µg	94
CL8964AP	250 µg	149
CL8964B	100 µg	124
CL8964F	100 µg	124
CL8964PE	50 µg	110
CL8966AP	250 µg	150
CL8966B	100 µg	87
CL8966F	100 µg	98
CL8966PE	50 µg	86
CL8967AP	250 µg	150
CL8967B	100 µg	87
CL8967B-3	300 µg	214

Cat #	Size	Price (USD)
CL8967F	100 µg	98
CL8967F-3	300 µg	214
CL8967PE	50 µg	86
CL8967PE-3	300 µg	306
CL8969AP	0.5 mg	255
CL8969B	100 µg	175
CL8969F	0.5 mg	280
CL8969PE	50 µg	194
CL8971AP	200 µg	206
CL8971B	100 µg	101
CL8971B-3	300 µg	292
CL8971F	100 µg	105
CL8971F-3	300 µg	298
CL8971PE	50 µg	122
CL8971PE-3	300 µg	479
CL8972B	100 µg	153
CL8972B-3	300 µg	326
CL8972F	100 µg	149
CL8972F-3	300 µg	326
CL8972PE	50 µg	106
CL8972PE-3	300 µg	415
CL8975AP	250 µg	150
CL8975B	100 µg	87
CL8975F	100 µg	98
CL8975PE	50 µg	86
CL8977AP	250 µg	223
CL8977B	100 µg	129
CL8977F	100 µg	146
CL8977PE	50 µg	128
CL8978AP	200 µg	198
CL8978PE	50 µg	166
CL8980AP	200 µg	258
CL8980PE	50 µg	273
CL8980PE-3	300 µg	1405
CL8981AP	250 µg	150
CL8981B	100 µg	87
CL8981B-3	300 µg	214
CL8981F	100 µg	98
CL8981F-3	300 µg	214
CL8981PE	50 µg	86
CL8981PE-3	300 µg	306
CL8982AP	250 µg	164
CL8982B	100 µg	120
CL8982F	100 µg	135
CL8982PE	50 µg	105
CL8983AP	250 µg	169
CL8983B	100 µg	99

Cat #	Size	Price (USD)
CL8983F	100 µg	99
CL8983PE	50 µg	90
CL8984AP	250 µg	189
CL8984F	100 µg	138
CL8985AP	250 µg	164
CL8985B	100 µg	95
CL8985B-3	300 µg	233
CL8985F	100 µg	107
CL8985F-3	300 µg	233
CL8986AP	200 µg	258
CL8986PE	50 µg	273
CL8986PE-3	300 µg	1405
CL8987AP	250 µg	185
CL8987B	100 µg	134
CL8987F	100 µg	139
CL8987PE	50 µg	151
CL8988AP	250 µg	164
CL8988B	100 µg	95
CL8988B-3	300 µg	233
CL8988F	100 µg	107
CL8988F-3	300 µg	233
CL8988PE	50 µg	93
CL8988PE-3	300 µg	334
CL8989AP	250 µg	213
CL8989APC	100 µg	270
CL8989B	100 µg	154
CL8989F	100 µg	160
CL8989PE	50 µg	151
CL8990A	0.5 mL	299
CL8990AP	250 µg	150
CL8990APC	100 µg	210
CL8990B	100 µg	87
CL8990B-3	300 µg	214
CL8990F	100 µg	98
CL8990F-3	300 µg	214
CL8990PE	50 µg	86
CL8990PE-3	300 µg	306
CL8991A	0.5 mL	299
CL8991AP	250 µg	150
CL8991APC	0.1 mg	190
CL8991B	100 µg	87
CL8991B-3	300 µg	214
CL8991F	100 µg	98
CL8991F-3	300 µg	214
CL8991PE	50 µg	86
CL8992A	0.5 mL	299
CL8993AP	100 µg	173

Cat #	Size	Price (USD)
CL8993B	100 µg	269
CL8993F	100 µg	184
CL8993F-3	300 µg	299
CL8993PE	50 µg	149
CL8993PE-3	300 µg	349
CL8994AP	250 µg	150
CL8994APC	0.1 mg	275
CL8994B	100 µg	150
CL8994B-3	300 µg	295
CL8994F	100 µg	98
CL8994LE	500 µg	249
CL8994PE	50 µg	86
CL8994PE-3	300 µg	306
CL8995AP	250 µg	164
CL8995B	100 µg	95
CL8995F	100 µg	107
CL8995PE	50 µg	93
CL8996AP	250 µg	164
CL8996B	100 µg	95
CL8996F	100 µg	107
CL8996PE	50 µg	93
CL8997AP	250 µg	164
CL8997B	100 µg	95
CL8997B-3	300 µg	233
CL8997F	100 µg	107
CL8997F-3	300 µg	233
CL8997PE	50 µg	93
CL8997PE-3	300 µg	334
CL8998AP	250 µg	222
CL8998F	100 µg	167
CL9001A	0.5 mL	299
CL9001AP	250 µg	164
CL9001F	100 µg	115
CL9003AP	200 µg	317
CL9004A	0.5 mL	299
CL9004AP	250 µg	164
CL9004B	100 µg	115
CL9004F	100 µg	115
CL9004PE	50 µg	104
CL9006A	0.5 mL	299
CL9007A	0.5 mL	299
CL9007AP	250 µg	150
CL9007B	100 µg	115
CL9007F	100 µg	115
CL9007PE	50 µg	104
CL9008A	0.5 mL	299
CL9008AP	250 µg	150

Cat #	Size	Price (USD)
CL9009A	0.5 mL	299
CL9009AP	250 µg	150
CL9009B	100 µg	115
CL9009F	100 µg	115
CL9009PE	50 µg	104
CL9010A	0.5 mL	299
CL9011A	0.5 mL	299
CL9011AP	250 µg	150
CL9011B	100 µg	115
CL9011F	100 µg	115
CL9011PE	50 µg	104
CL9015A	0.5 mL	299
CL9016A	0.5 mL	299
CL9017AP	200 µg	164
CL9017B	0.5 mg	275
CL9017F	0.5 mg	305
CL9020A	0.5 mL	299
CL9023A	0.5 mL	299
CL9023AP	250 µg	150
CL9023B	100 µg	115
CL9023F	100 µg	115
CL9023PE	50 µg	104
CL9140AP	2x10 ⁴ U	350
CL9141AP	2x10 ⁴ U	325
CL9143AP	500 µg	300
CL9151AP	50 µg	195
CL9151B	25 µg	195
CL9152AP	50 µg	195
CL9152B	25 µg	195
CL9153AP	50 µg	195
CL9153B	25 µg	195
CL9154AP	50 µg	195
CL9154B	25 µg	195
CL9156AP	50 µg	195
CL9156B	25 µg	195
CL9157AP	50 µg	195
CL9157B	25 µg	195
CL9158AP	50 µg	195
CL9158B	25 µg	195
CL9159AP	50 µg	195
CL9159B	25 µg	195
CL9160AP	50 µg	195
CL9160B	25 µg	195
CL9161AP	50 µg	195
CL9161B	25 µg	195
CL9162AP	50 µg	195
CL9162B	25 µg	195

Cat #	Size	Price (USD)
CL9165AP	50 µg	195
CL9165B	25 µg	195
CL9166AP	50 µg	195
CL9166B	25 µg	195
CL9168AP	50 µg	195
CL9168B	25 µg	195
CL9169AP	50 µg	195
CL9169B	25 µg	195
CL9170AP	50 µg	195
CL9170B	25 µg	195
CL9171AP	50 µg	195
CL9171B	25 µg	195
CL9172AP	50 µg	195
CL9172B	25 µg	195
CL9173AP	50 µg	195
CL9173B	25 µg	195
CL9174AP	50 µg	195
CL9174B	25 µg	195
CL9176AP	50 µg	195
CL9176B	25 µg	195
CL9177AP	50 µg	195
CL9177B	25 µg	195
CL9178AP	50 µg	195
CL9178B	25 µg	195
CL9179AP	50 µg	195
CL9179B	25 µg	195
CL9180AP	50 µg	195
CL9180B	25 µg	195
CL9181AP	50 µg	195
CL9181B	25 µg	195
CL9182AP	50 µg	195
CL9182B	25 µg	195
CL9183AP	50 µg	195
CL9183B	25 µg	195
CL9184AP	50 µg	195
CL9184B	25 µg	195
CL9185AP	50 µg	195
CL9185B	25 µg	195
CL9186AP	50 µg	195
CL9186B	25 µg	195
CL9187AP	50 µg	195
CL9187B	25 µg	195
CL9188AP	50 µg	195
CL9188B	25 µg	195
CL9189AP	50 µg	195
CL9189B	25 µg	195
CL9190AP	50 µg	195

Cat #	Size	Price (USD)
CL9190B	25 µg	195
CL9191AP	50 µg	195
CL9191B	25 µg	195
CL9192AP	50 µg	195
CL9192B	25 µg	195
CL9193AP	50 µg	195
CL9193B	25 µg	195
CL9194AP	50 µg	195
CL9194B	25 µg	195
CL9195AP	50 µg	195
CL9195B	25 µg	195
CL9203R	10 µg	195
CL9204R	10 µg	195
CL9205R	500 µg	195
CL9206R	20 µg	195
CL9207R	20 µg	195
CL9208R	10 µg	195
CL9209R	100 µg	195
CL9210R	50 µg	195
CL9211R	10 µg	195
CL9212R	25 µg	195
CL9213R	10 µg	195
CL9214R	20 µg	195
CL9216R	20 µg	195
CL9217R	10 µg	195
CL9218R	20 µg	195
CL9219R	20 µg	195
CL9220R	20 µg	195
CL9221R	10 µg	195
CL9222R	20 µg	195
CL9223R	20 µg	195
CL9224R	20 µg	195
CL9225R	10 µg	195
CL9230R	10 µg	195
CL9231R	1 mg	195
CL9232R	20 µg	195
CL9233R	10 µg	195
CL9234R	20 µg	195
CL9235R	20 µg	195
CL9236R	20 µg	195
CL9237R	25 µg	195
CL9238R	20 µg	195
CL9239R	20 µg	195
CL9240R	10 µg	195
CL9241R	10 µg	195
CL9242R	10 µg	195
CL9243R	10 µg	195

Cat #	Size	Price (USD)
CL9244R	20 µg	195
CL9245R	20 µg	195
CL9246R	10 µg	195
CL9247R	25 µg	195
CL9248R	25 µg	195
CL9249R	25 µg	195
CL9250R	25 µg	195
CL9251R	25 µg	195
CL9300R	20 µg	195
CL9300TR	20 µg	195
CL9301BR	10 µg	195
CL9302R	20 µg	195
CL9303R	10 µg	195
CL9304R	20 µg	195
CL9306R	10 µg	195
CL9307R	10 µg	195
CL9309R	10 µg	195
CL9310R	10 µg	195
CL9312R	10 µg	195
CL9313R	10 µg	195
CL9315R	10 µg	195
CL9320R	10 µg	195
CL9322R	10 µg	195
CL9325R	10 µg	195
CL9330R	1x10 ⁵ U	365
CL9331R	1x10 ⁵ U	495
CL9405AP	100 µg	189
CL9405B	100 µg	149
CL9405B-3	300 µg	326
CL9405F	100 µg	149
CL9405F-3	300 µg	326
CL9446AP	200 µg	172
CL9446APC	100 µg	378
CL9446F	100 µg	134
CL9446F-3	300 µg	317
CL9446PE	50 µg	186
CL9446PE-3	300 µg	621
CL95100	5x100 mL	144
CL9571AP	50 µg	195
CL9571B	25 µg	195
CL9572AP	50 µg	195
CL9572B	25 µg	195
CL9574AP	50 µg	195
CL9574B	25 µg	195
CL9575AP	50 µg	195
CL9575B	25 µg	195
CL9576AP	50 µg	195

Cat #	Size	Price (USD)
CL9576B	25 µg	195
CL9577AP	50 µg	195
CL9577B	25 µg	195
CL9578AP	50 µg	195
CL9578B	25 µg	195
CL9579AP	50 µg	195
CL9579B	25 µg	195
CL9580AP	50 µg	195
CL9580B	25 µg	195
CL9581AP	50 µg	195
CL9581B	25 µg	195
CL9582AP	50 µg	195
CL9582B	25 µg	195
CL9583AP	50 µg	195
CL9583B	25 µg	195
CL9584AP	50 µg	195
CL9584B	25 µg	195
CL9585AP	50 µg	195
CL9585B	25 µg	195
CL9586AP	50 µg	195
CL9586B	25 µg	195
CL9587AP	50 µg	195
CL9587B	25 µg	195
CL9588AP	50 µg	195
CL9588B	25 µg	195
CLA31140	5 mL	353
CLA31240	5 mL	353
CLA3140	2 mL	172
CLA31440	5 mL	286
CLA3240	2 mL	172
CLA3340	2 mL	134
CLA3840	2 mL	144
CLA41440	5 mL	267
CLA51140	5 mL	267
CLA51240	5 mL	305
CLA51340	5 mL	391
CLA5140	2 mL	172
CLA5240	2 mL	172
CLA5840	2 mL	144
CLAD31140	1 mL	210
CLAD31240	1 mL	220
CLAD31440	1 mL	210
CLAD41440	2 mL	210
CLAD51140	2 mL	210
CLAD51240	2 mL	239
CLAD51340	2 mL	343
CLAG3140	20 mg	197

Cat #	Size	Price (USD)
CLAG3240	20 mg	197
CLAG3340	20 mg	197
CLAG3840	20 mg	197
CLAG5140	20 mg	197
CLAG5240	20 mg	197
CLAG5840	20 mg	197
CLAS01-014	200 µL	427
CLAS01-015	200 µL	427
CLAS03-027	100 mg	274
CLAS04-039	200 µL	579
CLAS04-040	200 µL	579
CLCC10200	10 mg	75
CLCC10201	0.1 mg	34
CLCC10204	100 tests	80
CLCC20000	1.0 mL	149
CLCC20001	1.0 mL	139
CLCC20004	0.5 mL	147
CLCC20007	1.0 mL	149
CLCC20015	1.0 mL	139
CLCC21000	2 mg	83
CLCC21001	1 mg	70
CLCC21007	1 mg	76
CLCC21008	1 mg	97
CLCC21015	1 mg	76
CLCC21019	1 mg	70
CLCC23000	2 mg	83
CLCC23001	1 mg	90
CLCC23007	1 mg	103
CLCC23008	1 mg	123
CLCC23015	1 mg	97
CLCC23019	1 mg	90
CLCC30000	2 mL	109
CLCC30001	2 mL	121
CLCC30004	0.5 mg	190
CLCC30005	50 µg	168
CLCC30006	0.5 mL	168
CLCC30007	2 mL	154
CLCC30008	1 mg	200
CLCC30015	2 mL	150
CLCC30200	1 mL	183
CLCC30201	1 mL	218
CLCC30204	0.5 mL	207
CLCC30207	1 mL	211
CLCC30208	1 mL	402
CLCC30215	1 mL	225
CLCC31500	1 mL	236
CLCC31501	1.0 mg	120

Cat #	Size	Price (USD)
CLCC31504	0.25 mg	165
CLCC31505	0.5 mg	320
CLCC31507	1 mL	141
CLCC31508	1 mL	192
CLCC31515	1 mL	279
CLCC35000	1 mg	90
CLCC35001	0.5 mg	90
CLCC35004	0.5 mL	128
CLCC35006	0.25 mg	250
CLCC35007	0.5 mg	97
CLCC35008	0.5 mg	218
CLCC35010	1 mL	195
CLCC35011	0.5 mg	230
CLCC35015	0.5 mg	103
CLCC40000	1.0 mg	100
CLCC40001	1 mL	184
CLCC40003	1.0 mg	165
CLCC40004	0.5 mL	170
CLCC40005	0.5 mL	168
CLCC40006	0.5 mL	168
CLCC40007	1 mL	184
CLCC40008	1 mL	402
CLCC40015	1 mL	184
CLCC40100	2 mg	90
CLCC40101	1 mg	109
CLCC40107	0.5 mg	137
CLCC40108	1 mg	110
CLCC40115	0.5 mg	137
CLCC40400	1 mL	100
CLCC40401	1 mL	247
CLCC40407	1 mL	371
CLCC40408	1 mL	298
CLCC42000	2 mL	115
CLCC42001	2 mL	116
CLCC42004	0.5 mL	147
CLCC42007	2 mL	127
CLCC42008	1 mL	141
CLCC42015	2 mL	152
CLCC43000	1 mL	90
CLCC43001	0.5 mg	154
CLCC43004	0.25 mg	235
CLCC43007	0.5 mg	97
CLCC43008	0.5 mg	192
CLCC43015	0.5 mg	103
CLCC45000	1.0 mg	80
CLCC45001	1.0 mg	90
CLCC45004	0.5 mg	215

Cat #	Size	Price (USD)
CLCC50000	1.0 mg	75
CLCC50001	1.0 mg	95
CLCC50004	0.5 mg	275
CLCC50007	1.0 mL	105
CLCC50008	1 mL	330
CLCC50015	1.0 mg	95
CLCC55001	0.5 mg	142
CLCC55008	0.5 mg	142
CLCC55015	0.5 mg	142
CLCC6200	0.50 mg	90
CLCC6201	0.50 mg	125
CLCC6204	0.1 mg	155
CLCC6207	1.0 mL	130
CLCC6215	0.50 mg	125
CLCHM00	0.5 mL	155
CLCHM01	0.5 mL	18
CLCHM04	0.1 mg	165
CLCHM05	0.5 mL	206
CLCHM06	0.5 mL	206
CLCHM15	0.5 mg	240
CLCMG100	0.5 mL	69
CLCMG101	0.5 mL	75
CLCMG104	0.5 mL	86
CLCMG105	0.5 mL	206
CLCMG106	100 tests	145
CLCMG112	100 tests	160
CLCMG114	0.5 mL	234
CLCMG115	0.5 mL	75
CLCMG2A00	0.5 mL	69
CLCMG2A01	0.5 mL	75
CLCMG2A04	100 tests	115
CLCMG2A05	0.5 mL	206
CLCMG2A06	100 tests	145
CLCMG2A12	0.5 mL	234
CLCMG2A14	0.5 mL	234
CLCMG2A15	0.5 mL	75
CLCMG2B00	0.5 mL	79
CLCMG2B01	0.5 mL	79
CLCMG2B04	0.5 mL	84
CLCMG2B05	0.5 mL	124
CLCMG2B06	0.5 mL	128
CLCMG2B15	0.5 mL	79
CLCMG300	0.5 mL	69
CLCMG301	0.5 mL	165
CLCMG304	0.5 mL	186
CLCMG305	0.5 mL	206
CLCMG306	0.5 mL	206

Cat #	Size	Price (USD)
CLCMGM00	0.5 mL	72
CLCMGM01	0.5 mL	78
CLCMGM04	0.5 mL	91
CLCMGM15	0.5 mL	78
CLCR100	0.5 mL	69
CLCR101	0.5 mL	75
CLCR104	0.1 mg	140
CLCR105	0.5 mL	206
CLCR106	0.5 mL	206
CLCR115	0.5 mL	75
CLCR2A00	0.5 mL	69
CLCR2A01	0.5 mL	75
CLCR2A04	0.1 mg	140
CLCR2A05	0.5 mL	206
CLCR2A06	0.5 mL	206
CLCR2A12	0.1 mg	160
CLCR2A14	0.5 mL	234
CLCR2A15	0.5 mL	75
CLCR2B00	0.5 mL	69
CLCR2B01	0.5 mL	75
CLCR2B04	0.5 mL	86
CLCR2B05	0.1 mg	210
CLCR2B06	0.1 mg	200
CLCR2B15	0.5 mL	75
CLCR2C00	0.5 mL	155
CLCRGM00	0.5 mL	72
CLCRGM01	0.5 mL	165
CLCRGM04	0.5 mL	186
CLCRGM15	0.5 mL	165
CLCSA1001	1.0 mg	115
CLCSA1004-1	0.5 mg	175
CLCSA1004-4	1.0 mg	300
CLCSA1005	0.5 mg	240
CLCSA1006	0.5 mL	459
CLCSA1007	1.0 mL	110
CLCSA1008	1 mL	136
CLCSA1010	0.5 mL	116
CLCSA1011	1.0 mg	175
CLCSA1012	0.1 mg	185
CLCSA1014	0.5 mL	479
CLE100	1.2 mg	398
CLFAD31140	2 mg	248
CLFAD31240	2 mg	248
CLFAD31440	2 mg	248
CLFAD41440	2 mg	220
CLFAD51140	2 mg	220
CLFAD51240	2 mg	220

Cat #	Size	Price (USD)
CLFAD51340	2 mg	220
CLFAG3140	3 mg	239
CLFAG3240	3 mg	239
CLFAG3340	3 mg	239
CLFAG3840	3 mg	239
CLFAG5140	3 mg	239
CLFAG5240	3 mg	239
CLFAG5840	3 mg	239
CLGT00	10 mg	46
CLMCNET-001	1 mg	1552
CLMCNET-001.1	100 µg	245
CLMCNET-001.25	250 µg	572
CLMCNET-005	1 mg	980
CLMCNET-005.1	100 µg	163
CLMCNET-005.25	250 µg	370
CLMCNET-011	1 mL	123
CLMCNET-021	1 mL	102
CLMCNET-031	1 mg	123
CLMCNET-041	1 mg	1143
CLMCNET-041.5	500 µg	613
CLMCNET-051	1 mg	163
CLMCNET-061.1	100 µg	179
CLR01	10 µg	195
CLR02	10 µg	195
CLR03	25 µg	195
CLR04	25 µg	195
CLR05	10 µg	195
CLR06	20 µg	195
CLR07	20 µg	195
CLR08	20 µg	195
CLR09	100 µg	195
CLR10	20 µg	195
CLR11	20 µg	195
CLR12	10 µg	195
CLR13	20 µg	195
CLR14	10 µg	195
CLR15	20 µg	195
CLR16	10 µg	195
CLR17	1 mg	195
CLR18	10 µg	195
CLR19	20 µg	195
CLR21	25 µg	195
CLR22	10 µg	195
CLR23	10 µg	195
CLR30	1x10 ⁵ U	355
CLR31	1x10 ⁵ U	335
CLRB00	10 mg	46

Cat #	Size	Price (USD)
CLSP00	20 mg	46
CLSP01	0.5 mL	113
CLT9000	50 µg	363
CLT9001	100 µg	320
CLT9003	50 µg	320
CLT9007	100 µg	374
CLX213AP	0.1 mg	233
CLX399AP	0.1 mg	233
CLX400AP	0.1 mg	233
CLX48AP	0.1 mg	178
CLX58AP	0.1 mg	178
CLX59AP	0.1 mg	178

▶ Please inquire about additional formats and azide free products.

International Distributors

! If your country is not listed, please contact CEDARLANE directly.

AUSTRALIA



BioScientific Pty Ltd.
GyMEA, NSW 2227
toll-free: 1-300 BIOSCI (246724)
tel: +61 02 9521 2177
fax: +61 02 9542 3100
email: daryn@biosci.com.au
www.biosci.com.au

AUSTRIA



Szabo-Scandic
HandelsgmbH & Co KG
Vienna, Austria
tel: 43-1-4893961-0
fax: 43-1-4893961-7
email: mail@szabo-scandic.com
www.szabo-scandic.com

BENELUX



Sanbio B.V.
5405 PB UDEN
tel: +31-413-251115
fax: +31-413-266605
tel (Brussels): 02-21 92 137
email: sanbio@sanbio.nl
www.sanbio.nl

BOLIVIA



Entelequi
La Paz, Bolivia
tel: 591-22146205
fax: 591-22146204
email: westwind@entelnet.bo
entelequi@hotmail.com

BRAZIL



Genese Produtos
Diagnosticos
Sao Paulo, Brazil 01527-020
tel: +55 11 33416987
fax: +55 11 32072246
email: genese@gen.com.br
www.gendiag.com.br

CHILE/BOLIVA/ PARAGUAY



Biodiagnostico S.A.
Santiago, Chile 7510186
tel: +56 2 3789432
email: biodiagsa@bio-diagnostico.com
www.bio-diagnostico.com

CHINA



HONG KONG
Onwon Trading Ltd.
Kowloon, Hong Kong
tel: (852) 27577569
fax: (852) 27577211
email: info@onwon.com.hk
http://shopping.netsuite.com/onwon

CHINA



SHANGHAI
Shanghai Pufei Biotech Company
Shanghai, China 201204
tel: 86-21-51088100
fax: 86-21-33932199
email: info@pufei.com
www.pufei.com

SHENZHEN

Dakewe Biotech Co.
(Company Headquarters)
Shenzhen, China 518067
tel: 86 755 26650164
fax: 86 755 26401908
email: info@dakewe.com
www.dakewe.com

BEIJING

Dakewe Biotech Co.
Beijing, China
tel: 86 010-52086640
fax: 86 010-52086643
email: info@dakewe.net
www.dakewe.net

GUANGZHOU

Dakewe Biotech Co.
tel: 86 020 87350280/87381715
fax: 86 020-87381715
email: info@dakewe.net
www.dakewe.net

CROATIA



BOMI-LAB
Zagreb, Croatia
tel: + 385 1 4922 640
fax: + 385 1 4922 645
email: bomi-lab@zg.t-com.hr
www.bomi-lab.hr

CZECH REPUBLIC



Baria s.r.o.
Psary, Czech Republic 25244
tel: +420 774227423
fax: +420 244911 228
email: info@baria.cz
www.baria.cz

DENMARK



TriChem ApS – interkemi
Skanderborg, Denmark
tel: 45-47386628
fax: 45-47386627
email: info@trichem.dk
www.trichem.dk

ESTONIA



Cayman Europe
Tallinn, Estonia 12618
tel: +372 670 32 32 or +372 670 37 37
fax: +372 670 36 83
email: info@caymaneuropa.com
www.caymaneuropa.com

FINLAND



Immuno Diagnostic Oy
Hameenlinna, Finland
tel: 358-3-615 370
fax: 358-3-6822 039
email: info@immunodiagnostic.fi
www.immunodiagnostic.fi

FRANCE



Tebu-bio France
Le Perray en Yvelines Cedex,
France 78612
tel: +33 0130 46 39 00
fax: +33 0130 46 39 11
email: france@tebu-bio.com
www.tebu-bio.com

GERMANY



Biozol Diagnostica
Vertrieb GmbH
Eching, Germany D-85386
tel: 49-89 37 99 6666
toll-free: 08000-BIOZOL
fax: 49-89 37 99 666 99
email: info@biozol.de
www.biozol.de

GREECE



Biodynamics S.A.
Athens, Greece 11525
tel: 30 210 6449421
fax: 30 210 6442266
email: info@biodynamics.gr
www.biodynamics.gr

ICELAND

Nordic Biosite AB
Täby, Sweden S-183 62
tel: +46(0)8 54 44 33 40
fax: +46(0)8 756 94 90
email: info@biosite.se
www.biosite.se



LITHUANIA | LATVIA | ESTONIA

Bioeksma
Vilnius, Lithuania LT-08412
tel: 370 5 2729713
fax: 370 5 2729712
email: arunas.strike@bioeksma.lt
www.bioeksma.lt



INDIA

Bi Biotech India Pvt. Ltd.
New Delhi, India 110066
tel: 91-11-2610-1271
fax: 91-11-2610-1273
email: info@biotechindia.com
www.biotechindia.com



IRAN

Negin Gostar Teb Company
Tehran, Iran
tel: 98-21-8898-4691
fax: 98-21-8895-1974
email: negingostar_teb@yahoo.com



ISRAEL

Tarom Applied
Technologies Ltd.
Tel Aviv, Israel 61392
tel: 972-3-9214145
fax: 972-3-9214146
email: tarom@tarom.co.il
www.tarom.co.il



ITALY

EuroClone S.p.A
Pero (Milan), Italy 20016
toll-free: 800 315911
tel: +39 02 381951
fax: +39 02 38101465
email: tsa@euroclone.it
www.euroclonegroup.it



JAPAN

Cosmo Bio Co., Ltd.
Tokyo, Japan 135-0016
tel: +81 (03) 5632 9610/9620
fax: +81 (03) 5632 9619
email: mail@cosmobio.jp
www.cosmobio.co.jp



KOREA

Fine Life Science Co Ltd
Seoul, Korea 153-803
tel: 82 2 744 7859
fax: 82 2 744 5281
email: finels@finels.com
www.finels.com



Max Diagnostics Co., Ltd (MDS)

Seoul, Korea 156-836
tel: 82 (0)10-2431-5780
fax: 82 (0)2-3462-2477
email: seyouub.k@gmail.com

MALAYSIA

Premier Diagnostics
Sdn Bhd
Selangor, Malaysia 47620
tel: 603-8024-0680
fax: 603-8024-0780
email: premierdiagnostics@unifi.my
clinicalpremier8@gmail.com
www.premierdiagnostics.com.my



MIDDLE EAST

BioMedical Resources
Richmond Hill, Canada L4C 0N3
tel: 416-414-7040
toll-free: 1-888-288-2330
fax: 905-770-1339
email: biomedical@rogers.com

NEW ZEALAND

BioScientific Pty Ltd.
GyMEA, NSW 2227
toll-free: 1-300 BIOSCI (246724)
tel: +61 02 9521 2177
fax: +61 02 9542 3100
email: daryn@biosci.com.au
www.biosci.com.au



NORWAY

Nordic BioSite AS
Oslo, Norway N-0253
toll-free: 800 10 301
fax: +46(0)8-756 94 90
email: info@biosite.no
www.biosite.no



PORTUGAL

Inopat S.A.
Porto, Portugal 4250-186
tel: 351-225507073
fax: 351-225505591
email: inopat@inopat.com
www.inopat.com



RUSSIA

ChemBio
Moscow, Russia 119146
tel: + 7 495 223-9279
fax: +7 495 223-9289
email: info@chembio.ru
www.chembio.ru



SINGAPORE

i-DNA Biotechnology Pte Ltd
Singapore 128424
tel: (65) 6779 0665
fax: (65) 6776 0368
email: info@i-dna.sg
www.i-dna.sg



SLOVAKIA

Baria s.r.o.
Psary, Czech Republic 25244
tel: +420 774227423
fax: +420 244911 228
email: info@baria.cz
www.baria.cz



SLOVENIA

IRIS Mednarodna
trgovina d.o.o.
1000 Ljubljana, Slovenia
tel: +386 1 200 66 47, 040 47 47 25
fax: +386 1 200 66 60
email: irena.kogovsek@iris.si
www.iris.si



SPAIN

Diagnostica Longwood S.L.
Zaragoza, Spain 50011
tel: (34) 976 32 06 38
fax: (34) 976 3206 60
email: dlw@dlongwood.com
www.dlongwood.com



SWEDEN

Nordic Biosite AB
Täby, Sweden S-183 62
tel: +46(0)8 54 44 33 40
fax: +46(0)8 756 94 90
email: info@biosite.se
www.biosite.se



SWITZERLAND

BioConcept
4123 Allschwil/BL, Switzerland
tel: 41 61 486 8080
fax: 41 61 486 8000
email: info@bioconcept.ch
www.bioconcept.ch



TAIWAN

Feng Jih Biomedical &
Instruments Co., Ltd.
New Taipei City, Taiwan
tel: 886 2 2695 9990
fax: 886 2 2695 9963
email: fjbio@fjbio.com.tw



Watson Biotechnology Co. Ltd.

New Taipei City, Taiwan
tel: 886-2-89916881
fax: 886-2-89936967
email: watson.biotechnology@gmail.com
www.tenscigene.com.tw

THAILAND

Rapport Co. Ltd.
Bangkok, Thailand 10240
tel: +662 7342800
fax: +662 7340579, +662 7047369
email: rapport@ksc.th.com
www.rapportthailand.com



TURKEY

MedSanTek Ltd. Co
Istanbul, Turkey 34093
tel: +90 212 635 85 46
fax: +90 212 635 83 50
email: medsantek@medsantek.com.tr
www.medsantek.com.tr



UNITED KINGDOM

VH Bio Ltd.
Gateshead, UK NE11 0ZF
tel: +44 191 495 8210
fax: +44 191 487 4285
Sales Freephone: 0800 38 70 79
Sales Freefax: 0800 45 45 14
email: info@vhbio.com
www.vhbio.com



USA

Accurate Chemical
& Scientific Corp.
Westbury, NY USA 11590
toll-free: 800-645-6264
tel: 516-333-2221
west coast: 800-255-9378
fax: 516-997-4948
email: info@accuratechemical.com
www.accuratechemical.com



CEDARLANE USA

Burlington, NC USA 27215
toll-free: 800-721-1644
tel: 336-513-5135
fax: 336-513-5138
email: service@cedarlanelabs.com
www.cedarlanelabs.com

VIETNAM

Truong Bio, Inc.
HoChiMinh City, VietNam.
tel: 84-8-3755-3648
fax: 84-8-3755-4403
email: truongbio1@msn.com



official distributor

SZABO-SCANDIC HandelsgmbH
Quellenstraße 110, A-1100 Wien
T. +43(0)1 489 3961-0
F. +43(0)1 489 3961-7
mail@szabo-scandic.com
www.szabo-scandic.com



**SZABO
SCANDIC**

For more information, please contact:

CEDARLANE 
www.cedarlanelabs.com

In Canada

4410 Paletta Court,
Burlington, ON L7L 5R2
Toll Free: 1-800-268-5058
T: 289-288-0001 | F: 289-288-0020

In the USA

1210 Turrentine Street,
Burlington, NC 27215
Toll Free: 1-800-721-1644
T: 336-513-5135 | F: 336-513-5138



All prices are USD and subject to change without notice.