

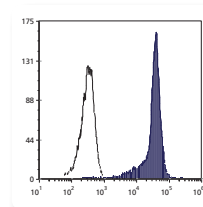
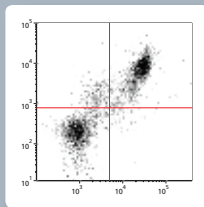
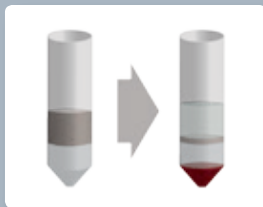
official distributor

SZABO-SCANDIC Handels GmbH  
Quellenstraße 110, A-1100 Wien  
T. +43(0)1 489 3961-0  
F. +43(0)1 489 3961-7  
mail@szabo-scandic.com  
www.szabo-scandic.com



SZABO  
SCANDIC

ESSENTIAL TOOLS FOR FLOW CYTOMETRY FROM CEDARLANE



**CEDARLANE**

# Essential Tools for Flow Cytometry

Lympholyte® Cell Separation Media

Cell Purification Immunocolumns

Antibodies

[www.cedarlanelabs.com/Flow](http://www.cedarlanelabs.com/Flow)

# Lympholyte®

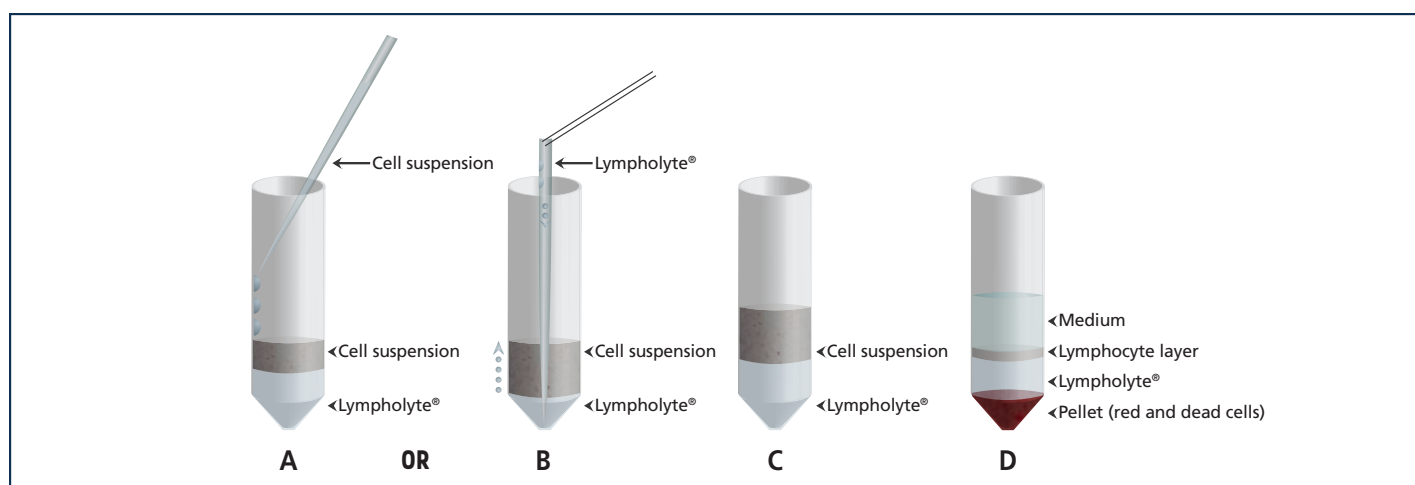
CEDARLANE's Lympholyte® Cell Separation density gradient centrifugation media has been specifically designed for the isolation of viable lymphocytes from mouse, rat, rabbit, human and other mammalian cell populations. The resulting cell population demonstrates a high, nonselective recovery of viable lymphocytes that are suitable for use as target cells in cytotoxicity and FACS assays and in *in vivo* / *in vitro* functional studies. All products are supplied as sterile liquid with varying densities.

## Applications for Lympholyte® include:

- Isolation of viable lymphocytes from lymphoid organs by removal of red and dead cells.
- Removal of dead cells from lymphocyte suspensions; for example, after treatment with antibody plus complement or following cell culture.

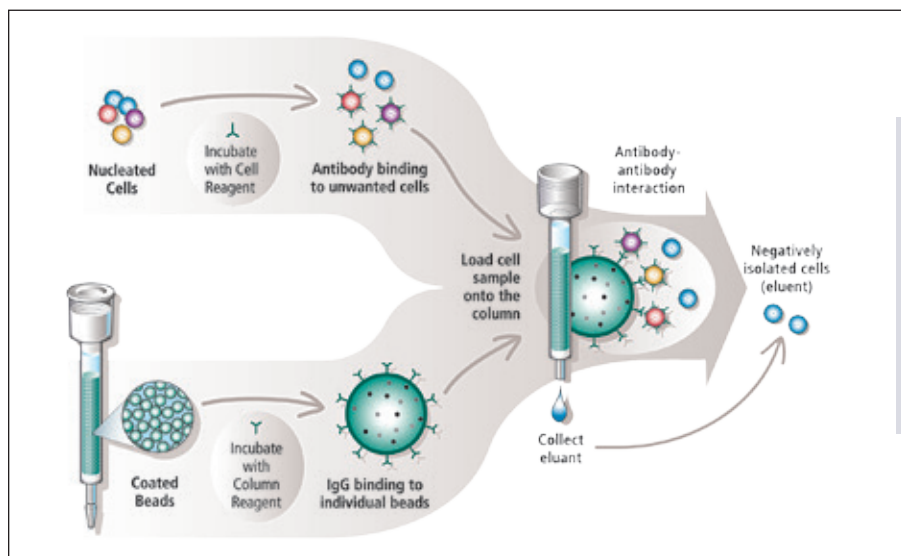
## Lympholyte® Cell Separation Media

Product	Density	Size	Main Application	Cat. #
Lympholyte®-H Cell Separation Media  C€	1.0770 ± 0.001 @ 25°C, g/ml	5x30 mL	Isolation of viable <b>HUMAN</b> lymphocytes from peripheral blood	<b>CL5010</b>
	1.0770 ± 0.001 @ 25°C, g/ml	100 mL	Isolation of viable <b>HUMAN</b> lymphocytes from peripheral blood	<b>CL5015</b>
	1.0770 ± 0.001 @ 25°C, g/ml	6x100 mL	Isolation of viable <b>HUMAN</b> lymphocytes from peripheral blood	<b>CL5016</b>
	1.0770 ± 0.001 @ 25°C, g/ml	500 mL	Isolation of viable <b>HUMAN</b> lymphocytes from peripheral blood	<b>CL5020</b>
	1.0770 ± 0.001 @ 25°C, g/ml	6x500 mL	Isolation of viable <b>HUMAN</b> lymphocytes from peripheral blood	<b>CL5026</b>
Lympholyte®-M Cell Separation Media	1.0875 ± 0.001 @ 25°C, g/ml	5x30 mL	Isolation of viable <b>MOUSE</b> lymphocytes from lymphoid tissue	<b>CL5030</b>
	1.0875 ± 0.001 @ 25°C, g/ml	100 mL	Isolation of viable <b>MOUSE</b> lymphocytes from lymphoid tissue	<b>CL5031</b>
	1.0875 ± 0.001 @ 25°C, g/ml	500 mL	Isolation of viable <b>MOUSE</b> lymphocytes from lymphoid tissue	<b>CL5035</b>
Lympholyte®-Mammal Cell Separation Media <b>For species tested please contact tech@cedarlanelabs.com</b>	1.0860 ± 0.001 @ 25°C, g/ml	5x30 mL	Isolation of viable lymphocytes from peripheral blood of most <b>mammalian</b> species	<b>CL5110</b>
	1.0860 ± 0.001 @ 25°C, g/ml	100 mL	Isolation of viable lymphocytes from peripheral blood of most <b>mammalian</b> species	<b>CL5115</b>
	1.0860 ± 0.001 @ 25°C, g/ml	500 mL	Isolation of viable lymphocytes from peripheral blood of most <b>mammalian</b> species	<b>CL5120</b>
Lympholyte®-Rabbit Cell Separation Media	1.0965 ± 0.001 @ 25°C, g/ml	5x30 mL	Isolation of viable <b>RABBIT</b> lymphocytes from lymphoid tissue	<b>CL5050</b>
Lympholyte®-R Cell Separation Media	1.0940 ± 0.001 @ 25°C, g/ml	5x30 mL	Isolation of viable <b>RAT</b> lymphocytes from lymphoid tissue	<b>CL5040</b>
	1.0940 ± 0.001 @ 25°C, g/ml	100 mL	Isolation of viable <b>RAT</b> lymphocytes from lymphoid tissue	<b>CL5041</b>
	1.0940 ± 0.001 @ 25°C, g/ml	500 mL	Isolation of viable <b>RAT</b> lymphocytes from lymphoid tissue	<b>CL5045</b>
Lympholyte®-poly Cell Separation Media	1.113 ± 0.001 @ 25°C, g/ml	100 mL	Isolation of viable <b>HUMAN</b> polymorphonuclear cells	<b>CL5070</b>
	1.113 ± 0.001 @ 25°C, g/ml	250 mL	Isolation of viable <b>HUMAN</b> polymorphonuclear cells	<b>CL5071</b>
Lympholyte®-1.1	1.100 ± 0.001 @ 25°C, g/ml	500 mL	A high density Lympholyte® solution which can be diluted with PBS (without Ca <sup>2+</sup> /Mg <sup>2+</sup> ). Isolation of pancreatic islet cells prior to expanding them <i>in vitro</i>	<b>CL5095</b>



# Immunocolumns

CEDARLANE's collect™ Immunocolumn kits are simple, rapid, affinity chromatography tools for the gentle, non-magnetic enrichment of immune cell populations in humans, mice and rats. By the process of negative selection, virtually all unwanted cells are removed by the immunocolumns, resulting in a highly enriched population of the desired cells in the eluent. This process ensures that the isolated cells are unaltered and fully viable. The kits are in a sterile, ready-to-use format with quality controlled columns and reagents.



CEDARLANE's collect™ Immunocolumn kits (for mouse and rat) INCLUDE Lympholyte® (our density separation medium which eliminates erythrocytes, dead cells and debris from spleen, lymph node, thymus, bone marrow and blood suspensions), PBS and Lysing Buffer.

## Mouse

Product	Format	Size	Cat. #
T Cell Immunocolumns	Kit	10 Col.	<b>CL101</b>
	Kit (high capacity)	2 Col.	<b>CL101-2</b>
	Kit	5 Col.	<b>CL101-5</b>
CD4 Cell Immunocolumns	Kit	10 Col.	<b>CL111</b>
	Kit (high capacity)	2 Col.	<b>CL111-2</b>
	Kit	5 Col.	<b>CL111-5</b>
CD8 Cell Immunocolumns	Kit	10 Col.	<b>CL121</b>
	Kit (high capacity)	2 Col.	<b>CL121-2</b>
	Kit	5 Col.	<b>CL121-5</b>
B Cell Immunocolumns	Kit	10 Col.	<b>CL131</b>
	Kit	2 Col.	<b>CL131-2</b>
	Kit	5 Col.	<b>CL131-5</b>

## Rat

Product	Format	Size	Cat. #
T Cell Immunocolumns	Kit	10 Col.	<b>CL102</b>
	Kit (high capacity)	2 Col.	<b>CL102-2</b>
	Kit	5 Col.	<b>CL102-5</b>
	Kit (medium capacity)	5 Col.	<b>CL102-5PS</b>
CD4 Cell Immunocolumns	Kit	10 Col.	<b>CL112</b>
	Kit	2 Col.	<b>CL112-2</b>
	Kit	5 Col.	<b>CL112-5</b>
	Kit (medium capacity)	5 Col.	<b>CL112-5PS</b>
CD8 Cell Immunocolumns	Kit	10 Col.	<b>CL122</b>
	Kit (high capacity)	2 Col.	<b>CL122-2</b>
	Kit	5 Col.	<b>CL122-5</b>
	Kit (medium capacity)	5 Col.	<b>CL122-5PS</b>

## Human

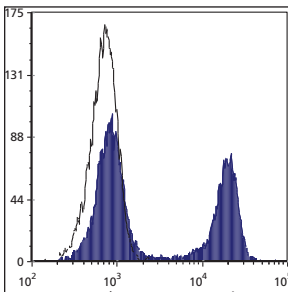
Product	Format	Size	Cat. #
Enhanced T Cell Immunocolumns	Kit	10 Col.	<b>CL100</b>
	Kit (high capacity)	2 Col.	<b>CL100-2</b>
	Kit	5 Col.	<b>CL100-5</b>
CD4 Cell Immunocolumns	Kit	10 Col.	<b>CL110</b>
	Kit (high capacity)	2 Col.	<b>CL110-2</b>
	Kit	5 Col.	<b>CL110-5</b>
CD8 Cell Immunocolumns	Kit	10 Col.	<b>CL120</b>
	Kit (high capacity)	2 Col.	<b>CL120-2</b>
	Kit	5 Col.	<b>CL120-5</b>

# Antibodies for Flow Cytometry

For over 25 years Cedarlane has provided flow cytometry related products to the life science research and diagnostic communities. In addition to our Lympholyte® and Collect™ Immunocolumn product lines, Cedarlane also offers an extensive range of antibodies useful in flow cytometry. We have antibodies to various cell surface markers including CD and MHC molecules, receptors and complement components. These antibodies are offered in a variety of formats including purified and conjugates to biotin, FITC, PE and APC.

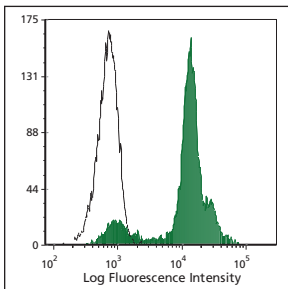
## Legend for Applications:

<b>AC</b>	=Affinity Chromatography
<b>AGG</b>	=Agglutination
<b>C</b>	=Cryostat Sections
<b>CT</b>	=Cytotoxicity Assay
<b>D</b>	=Depletion
<b>E</b>	=ELISA
<b>EC</b>	=ELISA (Capture)
<b>ED</b>	=ELISA (Detection)
<b>F</b>	=Flow Cytometry
<b>FN</b>	=Functional Assay
<b>ID</b>	=Immunocytochemistry
<b>IC</b>	=Immunodiffusion
<b>IF</b>	=Immunofluorescence
<b>IP</b>	=Immunoprecipitation
<b>IV</b>	=In vivo Assay
<b>N</b>	=Neutralization
<b>P</b>	=Paraffin-Embedded Sections
<b>R</b>	=RIA
<b>WB</b>	=Western Blotting



### Mouse CD8a (Ly2) (CL168)

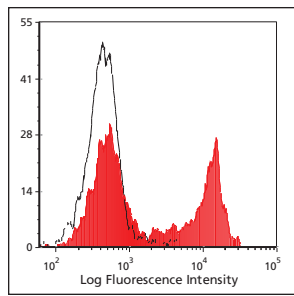
C57BL/6 mouse splenic T-cells (above) and thymocytes (below) stained with anti-CD8a (clone: CT-CD8a) (filled histogram) or rat IgG2a isotype control (open histogram).



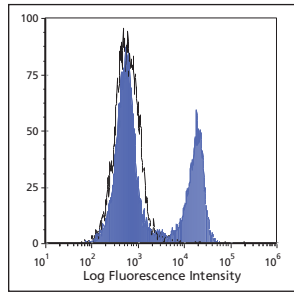
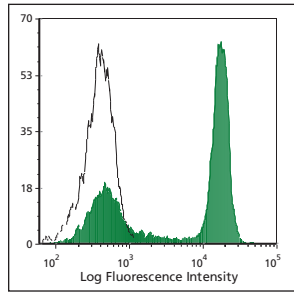
Specificity	Format	Clone	Isotype	Species Reactivity	Applications	Size	Cat. #
Alpha/Beta TCR	Purified	H57-597	Hamster IgG	Mouse	F, IP, C, WB	250 µg	CL7200AP
Alpha/Beta TCR	APC	H57-597	Hamster IgG	Mouse	F	100 µg	CL7200APC
Alpha/Beta TCR	Biotin	H57-597	Hamster IgG	Mouse	F, C	100 µg	CL7200B
Alpha/Beta TCR	FITC	H57-597	Hamster IgG	Mouse	F	100 µg	CL7200F
Alpha/Beta TCR	PE	H57-597	Hamster IgG	Mouse	F	50 µg	CL7200PE
Alpha/Beta TCR	PE-Cy5	H57-597	Hamster IgG	Mouse	F	100 µg	CL7200TC
Beta 2-microglobulin	Purified	YTH 470.5	Rat IgG2b	Human	F, WB	200 µg	CL7604AP
Beta 2-microglobulin	APC	YTH 470.5	Rat IgG2b	Human	F	100 µg	CL7604APC
Beta 2-microglobulin	Biotin	YTH 470.5	Rat IgG2b	Human	F, WB	100 µg	CL7604B
Beta 2-microglobulin	FITC	YTH 470.5	Rat IgG2b	Human	F	100 µg	CL7604F
Beta 2-microglobulin	PE	YTH 470.5	Rat IgG2b	Human	F	50 µg	CL7604PE
C3/C3b/iC3b	Purified	7C12	Mouse IgG1	Human	WB, F, E	250 µg	CL7636AP
C3/C3b/iC3b	Biotin	7C12	Mouse IgG1	Human	WB, F, E	100 µg	CL7636B
C3/C3b/iC3b	FITC	7C12	Mouse IgG1	Human	F	100 µg	CL7636F
C3/C3b/iC3b	PE	7C12	Mouse IgG1	Human	F	50 µg	CL7636PE
C3/C3b/iC3b	Purified	6C9	Mouse IgG1	Human/Mouse	F, E	250 µg	CL7631AP
C3/C3b/iC3b	APC	6C9	Mouse IgG1	Human/Mouse	F	100 µg	CL7631APC
C3/C3b/iC3b	Biotin	6C9	Mouse IgG1	Human/Mouse	F, E	100 µg	CL7631B
C3/C3b/iC3b	FITC	6C9	Mouse IgG1	Human/Mouse	F, E	100 µg	CL7631F
C3/C3b/iC3b	PE	6C9	Mouse IgG1	Human/Mouse	F, E	50 µg	CL7631PE
C3/C3b/iC3b/C3dg	Purified	1H8	Mouse IgG2a	Human	WB, F, E	250 µg	CL7637AP
C3/C3b/iC3b/C3dg	APC	1H8	Mouse IgG2a	Human	F	100 µg	CL7637APC
C3/C3b/iC3b/C3dg	Biotin	1H8	Mouse IgG2a	Human	WB, F, E	100 µg	CL7637B
C3/C3b/iC3b/C3dg	FITC	1H8	Mouse IgG2a	Human	F	100 µg	CL7637F
C3/C3b/iC3b/C3dg	PE	1H8	Mouse IgG2a	Human	F	50 µg	CL7637PE
C4 (C4b, C4d)	Purified	RmC16D2	Rat IgG2a	Mouse	IF, C, WB, E	250 µg	CL7504AP
C4 (C4b, C4d)	Biotin	RmC16D2	Rat IgG2a	Mouse	IF, E, WB, F, IHC, C	100 µg	CL7504B
C4 (C4b, C4d)	FITC	RmC16D2	Rat IgG2a	Mouse	IF	100 µg	CL7504F
C5a receptor (CD88)	Purified	20/70	Rat IgG2b	Mouse	F, IF, Blocking	250 µg	CL7588AP
C5a receptor (CD88)	Biotin	20/70	Rat IgG2b	Mouse	F, IF, Blocking	100 µg	CL7588B
C5a receptor (CD88)	FITC	20/70	Rat IgG2b	Mouse	F, IF, Blocking	100 µg	CL7588F
C5a receptor (CD88)	PE	20/70	Rat IgG2b	Mouse	F, IF, Blocking	50 µg	CL7588PE
Calgranulin A	Purified	CF-145	Mouse IgG2b	Human	F	200 µg	CL2711AP
Calgranulin A	Biotin	CF-145	Mouse IgG2b	Human	F	100 µg	CL2711B
Calgranulin A	FITC	CF-145	Mouse IgG2b	Human	F	100 µg	CL2711F
Calgranulin B	Purified	CF-557	Mouse IgG1	Human	F	200 µg	CL2712AP
Calgranulin B	Biotin	CF-557	Mouse IgG1	Human	F	100 µg	CL2712B
Calgranulin B	PE	CF-557	Mouse IgG1	Human	F	50 µg	CL2712PE
CD2 (LFA-2)	Purified	OX-34	Mouse IgG2a	Rat	F, IP, C, P	250 µg	CL034AP
CD2 (LFA-2)	Biotin	OX-34	Mouse IgG2a	Rat	F, C, P	100 µg	CL034B
CD2 (LFA-2)	FITC	OX-34	Mouse IgG2a	Rat	F	100 µg	CL034F
CD2 (LFA-2)	PE	OX-34	Mouse IgG2a	Rat	F	50 µg	CL034PE
CD3	APC	UCHT1	Mouse IgG1	Human	F	0.1 mg	CLX350APC
CD3	FITC	UCHT1	Mouse IgG1	Human	F, C	100 tests	CLX350F
CD3	Low Endotoxin	UCHT1	Mouse IgG1	HUMAN	FN	100 tests	CLX350LE
CD3	PE	UCHT1	Mouse IgG1	Human	F	100 tests	CLX350PE
CD3	PerCP	UCHT1	Mouse IgG1	Human	F	100 tests	CLX350PCP

Please inquire about additional formats/sizes and azide free products.

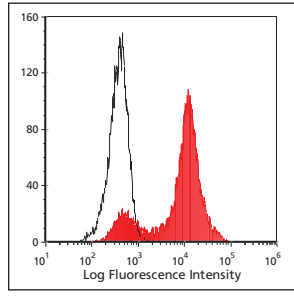
Specificity	Format	Clone	Isotype	Species Reactivity	Applications	Size	Cat. #
CD3	Purified	IF4	Mouse IgM	Rat	F, CT, C, FN, P	200 µg	<b>CL020AP</b>
CD3	FITC	IF4	Mouse IgM	Rat	F	100 µg	<b>CL020F</b>
CD3e	Purified	145-2C11	Hamster IgG	Mouse	F, IP, WB, C, FN, IV	250 µg	<b>CL7202AP</b>
CD3e	Biotin	145-2C11	Hamster IgG	Mouse	F, WB, C	100 µg	<b>CL7202B</b>
CD3e	FITC	145-2C11	Hamster IgG	Mouse	F	100 µg	<b>CL7202F</b>
CD3e	Low Endotoxin	145-2C11	Hamster IgG	Mouse	FN, IV	500 µg	<b>CL7202LE</b>
CD3z (CD247)	Purified	H146-968	Hamster IgG	Mouse	F, IF	250 µg	<b>CL7230AP</b>
CD3z (CD247)	Biotin	H146-968	Hamster IgG	Mouse	F, IF	100 µg	<b>CL7230B</b>
CD3z (CD247)	FITC	H146-968	Hamster IgG	Mouse	F, IF	100 µg	<b>CL7230F</b>
CD4	Purified	MEM-241	Mouse IgG1	Human	F, WB	0.1 mg	<b>CLX06AP</b>
CD4	APC	MEM-241	Mouse IgG1	Human	F	0.1 mg	<b>CLX06APC</b>
CD4	Biotin	MEM-241	Mouse IgG1	Human	F, WB	0.1 mg	<b>CLX06B</b>
CD4	FITC	MEM-241	Mouse IgG1	Human	F	100 tests	<b>CLX06F</b>
CD4	PE	MEM-241	Mouse IgG1	Human	F	100 tests	<b>CLX06PE</b>
CD4	PerCP	MEM-241	Mouse IgG1	Human	F	100 tests	<b>CLX06PCP</b>
CD4	Purified	W3/25	Mouse IgG1	Rat	F, IP, C, P, FN	250 µg	<b>CL003AP</b>
CD4	APC	W3/25	Mouse IgG1	Rat	F	100 µg	<b>CL003APC</b>
CD4	Biotin	W3/25	Mouse IgG1	Rat	F, IP, C, P	100 µg	<b>CL003B</b>
CD4	FITC	W3/25	Mouse IgG1	Rat	F, IF	100 µg	<b>CL003F</b>
CD4	PE	W3/25	Mouse IgG1	Rat	F	50 µg	<b>CL003PE</b>
CD4 (L3/T4; Ly4)	Purified	YTS 191.1.2	Rat IgG2b	Mouse	F, CT, IF, WB, IV	250 µg	<b>CL012AP</b>
CD4 (L3/T4; Ly4)	APC	YTS 191.1.2	Rat IgG2b	Mouse	F	100 µg	<b>CL012APC</b>
CD4 (L3/T4; Ly4)	Biotin	YTS 191.1.2	Rat IgG2b	Mouse	F, WB	100 µg	<b>CL012B</b>
CD4 (L3/T4; Ly4)	FITC	YTS 191.1.2	Rat IgG2b	Mouse	F	100 µg	<b>CL012F</b>
CD4 (L3/T4; Ly4)	Low Endotoxin	YTS 191.1.2	Rat IgG2b	Mouse	F, CT, IF, WB, IV	500 µg	<b>CL012LE</b>
CD4 (L3/T4; Ly4)	PE	YTS 191.1.2	Rat IgG2b	Mouse	F	50 µg	<b>CL012PE</b>
CD4 (L3/T4; Ly4)	Purified	CT-CD4	Rat IgG2a	Mouse	F	200 µg	<b>CL013AP</b>
CD4 (L3/T4; Ly4)	APC	CT-CD4	Rat IgG2a	Mouse	F	100 µg	<b>CL013APC</b>
CD4 (L3/T4; Ly4)	Biotin	CT-CD4	Rat IgG2a	Mouse	F	100 µg	<b>CL013B</b>
CD4 (L3/T4; Ly4)	FITC	CT-CD4	Rat IgG2a	Mouse	F	100 µg	<b>CL013F</b>
CD4 (L3/T4; Ly4)	PE	CT-CD4	Rat IgG2a	Mouse	F	50 µg	<b>CL013PE</b>
CD8	Purified	MEM-31	Mouse IgG2a	Human	F, IP	0.1 mg	<b>CLX10AP</b>
CD8	APC	MEM-31	Mouse IgG2a	Human	F	0.1 mg	<b>CLX10APC</b>
CD8	Biotin	MEM-31	Mouse IgG2a	Human	F, IP	0.1 mg	<b>CLX10B</b>
CD8	FITC	MEM-31	Mouse IgG2a	Human	F	100 tests	<b>CLX10F</b>
CD8	PE	MEM-31	Mouse IgG2a	Human	F	100 tests	<b>CLX10PE</b>
CD8	PerCP	MEM-31	Mouse IgG2a	Human	F	100 tests	<b>CLX10PCP</b>
CD8a	Purified	OX-8	Mouse IgG1	Rat	F, IP, WB, C, P	250 µg	<b>CL004AP</b>
CD8a	Biotin	OX-8	Mouse IgG1	Rat	F, WB, C, P	100 µg	<b>CL004B</b>
CD8a	FITC	OX-8	Mouse IgG1	Rat	F	100 µg	<b>CL004F</b>
CD8a	PE	OX-8	Mouse IgG1	Rat	F	50 µg	<b>CL004PE</b>
CD8a	PE-Cy5	OX-8	Mouse IgG1	Rat	F	100 µg	<b>CL004TC</b>
CD8a (Ly 2; Lyl 2)	Purified	CT-CD8a	Rat IgG2a	Mouse	F, IV	200 µg	<b>CL168AP</b>
CD8a (Ly 2; Lyl 2)	APC	CT-CD8a	Rat IgG2a	Mouse	F	100 µg	<b>CL168APC</b>
CD8a (Ly 2; Lyl 2)	Biotin	CT-CD8a	Rat IgG2a	Mouse	F	100 µg	<b>CL168B</b>
CD8a (Ly 2; Lyl 2)	FITC	CT-CD8a	Rat IgG2a	Mouse	F	100 µg	<b>CL168F</b>
CD8a (Ly 2; Lyl 2)	PE	CT-CD8a	Rat IgG2a	Mouse	F	50 µg	<b>CL168PE</b>
CD8a (Ly 2; Lyl 2)	PE-Cy5	CT-CD8a	Rat IgG2a	Mouse	F	100 µg	<b>CL168TC</b>
CD8a (Ly 2; Lyl 2)	Purified	YTS 169 AG 101 HL	Rat IgG2b	Mouse	F, CT, IV	250 µg	<b>CL169AP</b>
CD8a (Ly 2; Lyl 2)	APC	YTS 169 AG 101 HL	Rat IgG2b	Mouse	F	100 µg	<b>CL169APC</b>
CD8a (Ly 2; Lyl 2)	Biotin	YTS 169 AG 101 HL	Rat IgG2b	Mouse	F	100 µg	<b>CL169B</b>
CD8a (Ly 2; Lyl 2)	FITC	YTS 169 AG 101 HL	Rat IgG2b	Mouse	F	100 µg	<b>CL169F</b>
CD8a (Ly 2; Lyl 2)	Low Endotoxin	YTS 169 AG 101 HL	Rat IgG2b	Mouse	IV	500 µg	<b>CL169LE</b>
CD8a (Ly 2; Lyl 2)	PE	YTS 169 AG 101 HL	Rat IgG2b	Mouse	F	50 µg	<b>CL169PE</b>
CD8b (Ly 3)	Purified	CT-CD8b	Rat IgG2a	Mouse	F	200 µg	<b>CL8938AP</b>
CD8b (Ly 3)	Biotin	CT-CD8b	Rat IgG2a	Mouse	F	100 µg	<b>CL8938B</b>
CD8b (Ly 3)	FITC	CT-CD8b	Rat IgG2a	Mouse	F	100 µg	<b>CL8938F</b>
CD8b (Ly 3)	PE	CT-CD8b	Rat IgG2a	Mouse	F	50 µg	<b>CL8938PE</b>



**Rat CD4 (CL003)**  
Wistar rat splenocytes (above) and lymph nodes (below) stained with anti-CD4 (clone: W3/25) (filled histograms) or mouse IgG1 isotype control (open histograms)



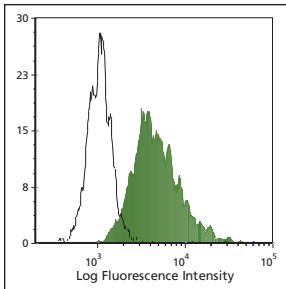
**Mouse CD8a (Ly 2) (CL169)**  
Balb/c mouse splenic T-cells (above) and thymocytes (below) stained with anti-CD8a (clone: YTS 169.4) (filled histogram) or rat IgG2b isotype control (open histogram).



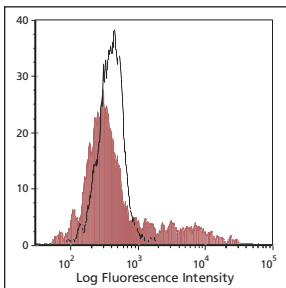


**Legend for Applications:**

<b>AC</b>	=Affinity Chromatography
<b>AGG</b>	=Agglutination
<b>C</b>	=Cryostat Sections
<b>CT</b>	=Cytotoxicity Assay
<b>D</b>	=Depletion
<b>E</b>	=ELISA
<b>EC</b>	=ELISA (Capture)
<b>ED</b>	=ELISA (Detection)
<b>F</b>	=Flow Cytometry
<b>FN</b>	=Functional Assay
<b>IC</b>	=Immunocytochemistry
<b>ID</b>	=Immunodiffusion
<b>IF</b>	=Immunofluorescence
<b>IP</b>	=Immunoprecipitation
<b>IV</b>	=In vivo Assay
<b>N</b>	=Neutralization
<b>P</b>	=Paraffin-Embedded Sections
<b>R</b>	=RIA
<b>WB</b>	=Western Blotting

**Human Calgranulin A (CL2711)**

Human whole blood (gated on granulocyte population) stained with anti-human calgranulin A (clone: CF-145) (filled histogram) or mouse IgG2b isotype control (open histogram).

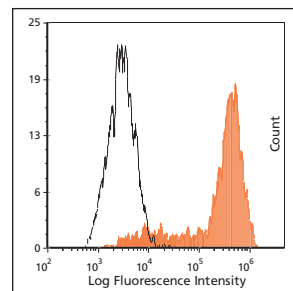
**Human CD21 (CL7613)**

Human peripheral blood lymphocytes stained with anti-CD21 (clone: 21A/5) (filled histogram) or Mouse IgG1 isotype control (open histogram).

Specificity	Format	Clone	Isotype	Species Reactivity	Applications	Size	Cat. #
CD8b (β chain)	Purified	3.4.1	Mouse IgG1	Rat	F	250 µg	CL091AP
CD8b (β chain)	Biotin	3.4.1	Mouse IgG1	Rat	F	100 µg	CL091B
CD8b (β chain)	FITC	3.4.1	Mouse IgG1	Rat	F	100 µg	CL091F
CD8b (β chain)	PE	3.4.1	Mouse IgG1	Rat	F	50 µg	CL091PE
CD9	Purified	MEM-61	Mouse IgG1	Human	F, WB, P, FN	0.1 mg	CLX12AP
CD9	APC	MEM-61	Mouse IgG1	Human	F	100 tests	CLX12APC
CD9	Biotin	MEM-61	Mouse IgG1	Human	F, WB, P	0.1 mg	CLX12B
CD9	FITC	MEM-61	Mouse IgG1	Human	F, P	100 tests	CLX12F
CD11a (LFA-1)	Purified	MEM-25	Mouse IgG1	Human	F, IP, FN	0.1 mg	CLX15AP
CD11a (LFA-1)	APC	MEM-25	Mouse IgG1	Human	F	100 tests	CLX15APC
CD11a (LFA-1)	Biotin	MEM-25	Mouse IgG1	Human	F, IP	0.1 mg	CLX15B
CD11a (LFA-1)	FITC	MEM-25	Mouse IgG1	Human	F	100 tests	CLX15F
CD11a (LFA-1)	PE	MEM-25	Mouse IgG1	Human	F	100 tests	CLX15PE
CD11a (LFA-1a)	Purified	IBL-6/2	Rat IgG1	Mouse	C, F, IP	250 µg	CL8985AP
CD11a (LFA-1a)	Biotin	IBL-6/2	Rat IgG1	Mouse	F	100 µg	CL8985B
CD11a (LFA-1a)	FITC	IBL-6/2	Rat IgG1	Mouse	F	100 µg	CL8985F
CD11b (Mac-1; Ly 40; CR3a)	Purified	M1/70.15	Rat IgG2b	Human/Mouse	F, C, P, IP, WB, FN	250 µg	CL8941AP
CD11b (Mac-1; Ly 40; CR3a)	APC	M1/70.15	Rat IgG2b	Human/Mouse	F	100 µg	CL8941APC
CD11b (Mac-1; Ly 40; CR3a)	Biotin	M1/70.15	Rat IgG2b	Human/Mouse	F, C, P	100 µg	CL8941B
CD11b (Mac-1; Ly 40; CR3a)	FITC	M1/70.15	Rat IgG2b	Human/Mouse	F, IF	100 µg	CL8941F
CD11b (Mac-1; Ly 40; CR3a)	Low Endotoxin	M1/70.15	Rat IgG2b	Human/Mouse	FN	500 µg	CL8941LE
CD11b (Mac-1; Ly 40; CR3a)	PE	M1/70.15	Rat IgG2b	Human/Mouse	F	50 µg	CL8941PE
CD11b (Mac-1; Ly 40; CR3a)	PE-Cy5	M1/70.15	Rat IgG2b	Human/Mouse	F	100 µg	CL8941TC
CD11b/c (pan macrophage)	Purified	OX-42	Mouse IgG2a	Rat	F, IP, C, P	250 µg	CL042AP
CD11b/c (pan macrophage)	APC	OX-42	Mouse IgG2a	Rat	F	100 µg	CL042APC
CD11b/c (pan macrophage)	Biotin	OX-42	Mouse IgG2a	Rat	F, C, P	100 µg	CL042B
CD11b/c (pan macrophage)	FITC	OX-42	Mouse IgG2a	Rat	F	100 µg	CL042F
CD11b/c (pan macrophage)	PE	OX-42	Mouse IgG2a	Rat	F	50 µg	CL042PE
CD14	Purified	MEM-15	Mouse IgG1	Human	F, IP	0.1 mg	CLX20AP
CD14	APC	MEM-15	Mouse IgG1	Human	F	100 tests	CLX20APC
CD14	Biotin	MEM-15	Mouse IgG1	Human	F, IP	0.1 mg	CLX20B
CD14	FITC	MEM-15	Mouse IgG1	Human	F	100 tests	CLX20F
CD14	PE	MEM-15	Mouse IgG1	Human	F	100 tests	CLX20PE
CD14	PerCP	MEM-15	Mouse IgG1	Human	F	100 tests	CLX20PCP
CD19	Purified	LT19	Mouse IgG1	Human	F, IP	0.1 mg	CLX29AP
CD19	APC	LT19	Mouse IgG1	Human	F	0.1 mg	CLX29APC
CD19	Biotin	LT19	Mouse IgG1	Human	F, IP	0.1 mg	CLX29B
CD19	FITC	LT19	Mouse IgG1	Human	F	100 tests	CLX29F
CD19	PE	LT19	Mouse IgG1	Human	F	100 tests	CLX29PE
CD19	PerCP	LT19	Mouse IgG1	Human	F	100 tests	CLX29PCP
CD19 (B4) (pan B)	Purified	6D5	Rat IgG2a	Mouse	F	200 µg	CL8914AP
CD19 (B4) (pan B)	FITC	6D5	Rat IgG2a	Mouse	F	100 µg	CL8914F
CD19 (B4) (pan B)	PE	6D5	Rat IgG2a	Mouse	F	50 µg	CL8914PE
CD20	Purified	LT20	Mouse IgG2a	Human	F	0.1 mg	CLX31AP
CD20	APC	LT20	Mouse IgG2a	Human	F	0.1 mg	CLX31APC
CD20	Biotin	LT20	Mouse IgG2a	Human	F	0.1 mg	CLX31B
CD20	FITC	LT20	Mouse IgG2a	Human	F	100 tests	CLX31F
CD21	Purified	21A/5	Mouse IgG1	Human	F, C	200 µg	CL7613AP
CD21	APC	21A/5	Mouse IgG1	Human	F	100 µg	CL7613APC
CD21	Biotin	21A/5	Mouse IgG1	Human	F, C	100 µg	CL7613B
CD21	FITC	21A/5	Mouse IgG1	Human	F, C	100 µg	CL7613F
CD21	PE	21A/5	Mouse IgG1	Human	F	50 µg	CL7613PE
CD25 (IL-2Rα)	Purified	YTH 906.9HL	Rat IgG2b	Human	F, WB	200 µg	CL7603AP
CD25 (IL-2Rα)	APC	YTH 906.9HL	Rat IgG2b	Human	F	100 µg	CL7603APC
CD25 (IL-2Rα)	Biotin	YTH 906.9HL	Rat IgG2b	Human	F, WB	100 µg	CL7603B
CD25 (IL-2Rα)	FITC	YTH 906.9HL	Rat IgG2b	Human	F	100 µg	CL7603F
CD25 (IL-2Rα)	PE	YTH 906.9HL	Rat IgG2b	Human	F	50 µg	CL7603PE

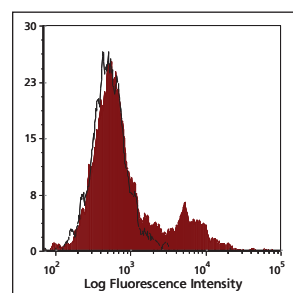
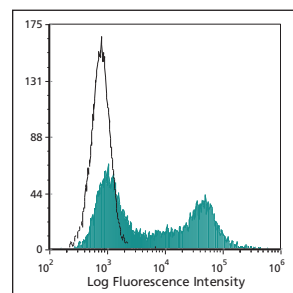
Specificity	Format	Clone	Isotype	Species Reactivity	Applications	Size	Cat. #
CD25 (IL-2Ra)	Purified	OX-39	Mouse IgG1	Rat	F, IP, C, P, FN	250 µg	<b>CL039AP</b>
CD25 (IL-2Ra)	Biotin	OX-39	Mouse IgG1	Rat	F, C, P	100 µg	<b>CL039B</b>
CD25 (IL-2Ra)	FITC	OX-39	Mouse IgG1	Rat	F	100 µg	<b>CL039F</b>
CD25 (IL-2Ra)	PE	OX-39	Mouse IgG1	Rat	F	50 µg	<b>CL039PE</b>
CD25 (IL-2Ra, p55, Ly 43)	Purified	PC61.5.3	Rat IgG1	Mouse	F, C, IP, FN	250 µg	<b>CL8925AP</b>
CD25 (IL-2Ra, p55, Ly 43)	Biotin	PC61.5.3	Rat IgG1	Mouse	F, C	100 µg	<b>CL8925B</b>
CD25 (IL-2Ra, p55, Ly 43)	FITC	PC61.5.3	Rat IgG1	Mouse	F	100 µg	<b>CL8925F</b>
CD25 (IL-2Ra, p55, Ly 43)	PE	PC61.5.3	Rat IgG1	Mouse	F	50 µg	<b>CL8925PE</b>
CD27	Purified	LG.3810	Armenian Hamster IgG1	Mouse	IHC, F, C (stimulating)	250 µg	<b>CL8963AP</b>
CD27	Biotin	LG.3810	Armenian Hamster IgG1	Mouse	IHC, F, C (stimulating)	100 µg	<b>CL8963B</b>
CD27	FITC	LG.3810	Armenian Hamster IgG1	Mouse	IHC, F, C (stimulating)	100 µg	<b>CL8963F</b>
CD27	PE	LG.3810	Armenian Hamster IgG1	Mouse	IHC, F, C (stimulating)	50 µg	<b>CL8963PE</b>
CD31 (PECAM-1)	Purified	MEM-05	Mouse IgG1	Human	F, WB	0.1 mg	<b>CLX39AP</b>
CD31 (PECAM-1)	APC	MEM-05	Mouse IgG1	Human	F	100 tests	<b>CLX39APC</b>
CD31 (PECAM-1)	Biotin	MEM-05	Mouse IgG1	Human	F, WB	0.1 mg	<b>CLX39B</b>
CD31 (PECAM-1)	FITC	MEM-05	Mouse IgG1	Human	F	100 tests	<b>CLX39F</b>
CD31 (PECAM-1)	PE	MEM-05	Mouse IgG1	Human	F	100 tests	<b>CLX39PE</b>
CD32/16	Purified	KT1632	Rat IgG2a	Mouse	F	100 µg	<b>CL9405AP</b>
CD32/16	Biotin	KT1632	Rat IgG2a	Mouse	F	100 µg	<b>CL9405B</b>
CD32/16	FITC	KT1632	Rat IgG2a	Mouse	F	100 µg	<b>CL9405F</b>
CD33	Purified	CD33 1C7/1	Mouse IgG1	Human	WB, F, E	200 µg	<b>CL7627AP</b>
CD33	Biotin	CD33 1C7/1	Mouse IgG1	Human	WB, F, E	100 µg	<b>CL7627B</b>
CD33	FITC	CD33 1C7/1	Mouse IgG1	Human	F	100 µg	<b>CL7627F</b>
CD33	PE	CD33 1C7/1	Mouse IgG1	Human	F	50 µg	<b>CL7627PE</b>
CD34	Purified	4H11[APG]	Mouse IgG1	Human	F, WB, P	0.1 mg	<b>CLX41AP</b>
CD34	APC	4H11[APG]	Mouse IgG1	Human	F	100 tests	<b>CLX41APC</b>
CD34	Biotin	4H11[APG]	Mouse IgG1	Human	F, WB, P	0.1 mg	<b>CLX41B</b>
CD34	FITC	4H11[APG]	Mouse IgG1	Human	F, P	100 tests	<b>CLX41F</b>
CD34	PE	4H11[APG]	Mouse IgG1	Human	F	100 tests	<b>CLX41PE</b>
CD34 (mucosalin; sialomucin)	APC	MEC14.7	Rat IgG2a	Mouse	F	100 µg	<b>CL8927APC</b>
CD34 (mucosalin; sialomucin)	FITC	MEC 14.7	Rat IgG2a	Mouse	F, C, P, E, WB, IP	100 µg	<b>CL8927F</b>
CD34 (mucosalin; sialomucin)	Purified	MEC 14.7	Rat IgG2a	Mouse	F, C, P, E, WB, IP	250 µg	<b>CL8927AP</b>
CD34 (mucosalin; sialomucin)	Biotin	MEC 14.7	Rat IgG2a	Mouse	F, C, P, E, WB	100 µg	<b>CL8927B</b>
CD34 (mucosalin; sialomucin)	PE	MEC 14.7	Rat IgG2a	Mouse	F	50 µg	<b>CL8927PE</b>
CD35	Purified	To5	Mouse IgG1	Human	WB, F, C	200 µg	<b>CL7614AP</b>
CD35	APC	To5	Mouse IgG1	Human	F	100 µg	<b>CL7614APC</b>
CD35	Biotin	To5	Mouse IgG1	Human	WB, F, C	100 µg	<b>CL7614B</b>
CD35	FITC	To5	Mouse IgG1	Human	F, C	100 µg	<b>CL7614F</b>
CD35	PE	To5	Mouse IgG1	Human	F	50 µg	<b>CL7614PE</b>
CD44 (Ly 24, Pgp-1)	Purified	KM81	Rat IgG2a	Mouse	F, C	250 µg	<b>CL8944AP</b>
CD44 (Ly 24, Pgp-1)	APC	KM81	Rat IgG2a	Mouse	F	100 µg	<b>CL8944APC</b>
CD44 (Ly 24, Pgp-1)	Biotin	KM81	Rat IgG2a	Mouse	F, C	100 µg	<b>CL8944B</b>
CD44 (Ly 24, Pgp-1)	FITC	KM81	Rat IgG2a	Mouse	F	100 µg	<b>CL8944F</b>
CD44 (Ly 24, Pgp-1)	PE	KM81	Rat IgG2a	Mouse	F	50 µg	<b>CL8944PE</b>
CD44 (Pgp-1)	Purified	OX-49	Mouse IgG2a	Rat	F, IP, C	250 µg	<b>CL044AP</b>
CD44 (Pgp-1)	Biotin	OX-49	Mouse IgG2a	Rat	F, C	100 µg	<b>CL044B</b>
CD44 (Pgp-1)	FITC	OX-49	Mouse IgG2a	Rat	F	100 µg	<b>CL044F</b>
CD45 (LCA)	Purified	IBL-5/25	Rat IgG1	Mouse	C, F, IP	250 µg	<b>CL8988AP</b>
CD45 (LCA)	Biotin	IBL-5/25	Rat IgG1	Mouse	F	100 µg	<b>CL8988B</b>
CD45 (LCA)	FITC	IBL-5/25	Rat IgG1	Mouse	F	100 µg	<b>CL8988F</b>
CD45 (LCA)	PE	IBL-5/25	Rat IgG1	Mouse	F	50 µg	<b>CL8988PE</b>
CD45 (LCA)	Purified	OX-1	Mouse IgG1	Rat	F, C, IF, P	250 µg	<b>CL009AP</b>
CD45 (LCA)	Biotin	OX-1	Mouse IgG1	Rat	F, C	100 µg	<b>CL009B</b>
CD45 (LCA)	FITC	OX-1	Mouse IgG1	Rat	F	100 µg	<b>CL009F</b>
CD45 (LCA)	PE	OX-1	Mouse IgG1	Rat	F	50 µg	<b>CL009PE</b>

Please inquire about additional formats/sizes and azide free products.



#### Anti-Mouse CD11b (CL8941)

C3H/HE mouse peritoneal macrophages (above) and bone marrow (below) stained with anti-CD11b (clone: M1/70.15) (filled histogram) or rat IgG2b isotype control (open histogram).

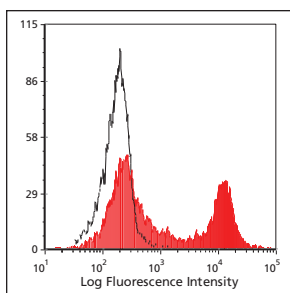


#### Human CD35 (CL7614)

Human peripheral blood lymphocytes stained with anti-CD35 (clone: To5) (filled histogram) or Mouse IgG1 isotype control (open histogram).

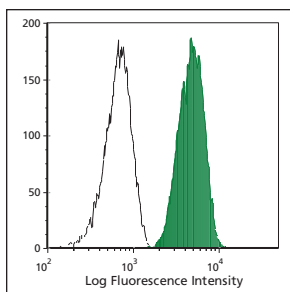
**Legend for Applications:**

- AC** =Affinity Chromatography
- AGG** =Agglutination
- C** =Cryostat Sections
- CT** =Cytotoxicity Assay
- D** =Depletion
- E** =ELISA
- EC** =ELISA (Capture)
- ED** =ELISA (Detection)
- F** =Flow Cytometry
- FN** =Functional Assay
- IC** =Immunocytochemistry
- ID** =Immunodiffusion
- IF** =Immunofluorescence
- IP** =Immunoprecipitation
- IV** =In vivo Assay
- N** =Neutralization
- P** =Paraffin-Embedded Sections
- R** =RIA
- WB** =Western Blotting



**Mouse/Human CD45R (Ly 5, B220) (CL8990)**

Balb/c mouse splenocytes stained with anti-CD45R (Ly 5, B220) (clone: RA3-6B2) (filled histogram) or rat IgG2a isotype control (open histogram).



**Human CD59 (CL7673)**

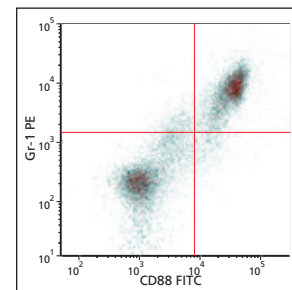
Human Red Blood Cells stained with anti-CD59 (clone: 1F5) (filled histogram) or Mouse IgG1 isotype control (open histogram).

Specificity	Format	Clone	Isotype	Species Reactivity	Applications	Size	Cat. #
CD45 (T200)	Purified	YAML 501.4	Rat IgG2a	Human	F, WB	200 µg	CL7605AP
CD45 (T200)	APC	YAML 501.4	Rat IgG2a	Human	F	100 µg	CL7605APC
CD45 (T200)	Biotin	YAML 501.4	Rat IgG2a	Human	F, WB	100 µg	CL7605B
CD45 (T200)	FITC	YAML 501.4	Rat IgG2a	Human	F	100 µg	CL7605F
CD45 (T200)	PE	YAML 501.4	Rat IgG2a	Human	F	50 µg	CL7605PE
CD45R	Purified	YTH 80.103	Rat IgG2b	Human	F, WB	200 µg	CL7606AP
CD45R	APC	YTH 80.103	Rat IgG2b	Human	F	100 µg	CL7606APC
CD45R	Biotin	YTH 80.103	Rat IgG2b	Human	F, WB	100 µg	CL7606B
CD45R	FITC	YTH 80.103	Rat IgG2b	Human	F	100 µg	CL7606F
CD45R	PE	YTH 80.103	Rat IgG2b	Human	F	50 µg	CL7606PE
CD45R (Ly 5, B220)	Purified	RA3-6B2	Rat IgG2a	Human/Mouse	F	100 µg	CL8990AP
CD45R (Ly 5, B220)	APC	RA3-6B2	Rat IgG2a	Human/Mouse	F	100 µg	CL8990APC
CD45R (Ly 5, B220)	Biotin	RA3-6B2	Rat IgG2a	Human/Mouse	F	100 µg	CL8990B
CD45R (Ly 5, B220)	FITC	RA3-6B2	Rat IgG2a	Human/Mouse	F	100 µg	CL8990F
CD45R (Ly 5, B220)	PE	RA3-6B2	Rat IgG2a	Human/Mouse	F	100 µg	CL8990PE
CD45RA (pan B cell)	Purified	OX-33	Mouse IgG1	Rat	F, C, P	250 µg	CL033AP
CD45RA (pan B cell)	Biotin	OX-33	Mouse IgG1	Rat	F, C, P	100 µg	CL033B
CD45RA (pan B cell)	FITC	OX-33	Mouse IgG1	Rat	F	100 µg	CL033F
CD45RA (pan B cell)	PE	OX-33	Mouse IgG1	Rat	F	50 µg	CL033PE
CD45RB (Ly 5, exon B)	Purified	16A	Rat IgG2a	Mouse	F, C, IP, P	250 µg	CL8947AP
CD45RB (Ly 5, exon B)	Biotin	16A	Rat IgG2a	Mouse	F, C, P	100 µg	CL8947B
CD45RB (Ly 5, exon B)	FITC	16A	Rat IgG2a	Mouse	F	100 µg	CL8947F
CD45RB (Ly 5, exon B)	PE	16A	Rat IgG2a	Mouse	F	50 µg	CL8947PE
CD45RB (Ly 5, exon B)	PE-Cy5	16A	Rat IgG2a	Mouse	F	100 µg	CL8947TC
CD47 (IAP)	Purified	MEM-122	Mouse IgM	Human	F, WB, C	0.1 mg	CLX53AP
CD47 (IAP)	FITC	MEM-122	Mouse IgM	Human	F, C	100 tests	CLX53F
CD52 (Campath-1)	Purified	HI186	Mouse IgG2b	Human	F, P	0.1 mg	CLX56AP
CD52 (Campath-1)	APC	HI186	Mouse IgG2b	Human	F	100 tests	CLX56APC
CD52 (Campath-1)	FITC	HI186	Mouse IgG2b	Human	F, P	100 tests	CLX56F
CD52 (Campath-1)	PE	HI186	Mouse IgG2b	Human	F	100 tests	CLX56PE
CD56 (N-CAM)	Purified	MEM-188	Mouse IgG2a	Human	F, IP, P	0.1 mg	CLX61AP
CD56 (N-CAM)	APC	MEM-188	Mouse IgG2a	Human	F	0.1 mg	CLX61APC
CD56 (N-CAM)	Biotin	MEM-188	Mouse IgG2a	Human	F, IP, P	0.1 mg	CLX61B
CD56 (N-CAM)	FITC	MEM-188	Mouse IgG2a	Human	F, P	100 tests	CLX61F
CD56 (N-CAM)	PE	MEM-188	Mouse IgG2a	Human	F	100 tests	CLX61PE
CD56 (N-CAM)	PerCP	MEM-188	Mouse IgG2a	Human	F	100 tests	CLX61PCP
CD59 (Protectin)	Purified	1F5	Mouse IgG1	Human	F	250 µg	CL7673AP
CD59 (Protectin)	Biotin	1F5	Mouse IgG1	Human	F	100 µg	CL7673B
CD59 (Protectin)	FITC	1F5	Mouse IgG1	Human	F	100 µg	CL7673F
CD59 (Protectin)	PE	1F5	Mouse IgG1	Human	F	50 µg	CL7673PE
CD62P	Purified	HI62P	Mouse IgG1	Human	F, WB	0.1 mg	CLX237AP
CD63	Purified	MEM-259	Mouse IgG1	Human	F, IP, WB, P, IC	0.1 mg	CLX66AP
CD63	APC	MEM-259	Mouse IgG1	Human	F	100 tests	CLX66APC
CD63	Biotin	MEM-259	Mouse IgG1	Human	F, IP, WB, P, IC	0.1 mg	CLX66B
CD63	FITC	MEM-259	Mouse IgG1	Human	F, P, IC	100 tests	CLX66F
CD63	PE	MEM-259	Mouse IgG1	Human	F	100 tests	CLX66PE
CD63	PerCP	MEM-259	Mouse IgG1	Human	F	100 tests	CLX66PCP
CD70	Purified	BU69	Mouse IgG1	Human	F, IHC-F, IP	200 µg	CL7625AP
CD70	Biotin	BU69	Mouse IgG1	Human	F, IHC-F, IP	100 µg	CL7625B
CD70	FITC	BU69	Mouse IgG1	Human	F, IHC-F	100 µg	CL7625F
CD70	PE	BU69	Mouse IgG1	Human	F, IHC-F	50 µg	CL7625PE
CD71 (Transferrin Receptor)	Purified	MEM-189	Mouse IgG1	Human	F, WB, IP	0.1 mg	CLX68AP
CD71 (Transferrin Receptor)	Purified	R17217.1.4	Rat IgG2a	Mouse	F	200 µg	CL8971AP
CD71 (Transferrin Receptor)	Biotin	R17217.1.4	Rat IgG2a	Mouse	F	100 µg	CL8971B
CD71 (Transferrin Receptor)	FITC	R17217.1.4	Rat IgG2a	Mouse	F	100 µg	CL8971F
CD71 (Transferrin Receptor)	PE	R17217.1.4	Rat IgG2a	Mouse	F	50 µg	CL8971PE

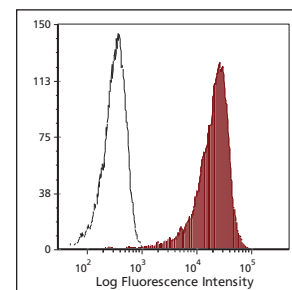


Please inquire about additional formats/sizes and azide free products.

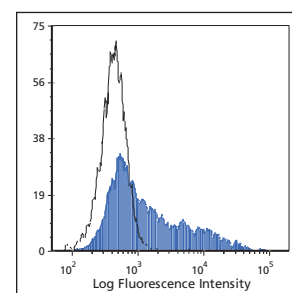
Specificity	Format	Clone	Isotype	Species Reactivity	Applications	Size	Cat. #
CD71 (Transferrin Receptor)	Purified	OX-26	Mouse IgG2a	Rat	F, IP, C	250 µg	<b>CL071AP</b>
CD71 (Transferrin Receptor)	Biotin	OX-26	Mouse IgG2a	Rat	F, C	100 µg	<b>CL071B</b>
CD71 (Transferrin Receptor)	FITC	OX-26	Mouse IgG2a	Rat	F	100 µg	<b>CL071F</b>
CD81 (TAPA-1)	Purified	EAT 2	Mouse IgG1	Mouse	F	250 µg	<b>CL8981AP</b>
CD81 (TAPA-1)	Biotin	EAT 2	Mouse IgG1	Mouse	F	100 µg	<b>CL8981B</b>
CD81 (TAPA-1)	FITC	EAT 2	Mouse IgG1	Mouse	F	100 µg	<b>CL8981F</b>
CD81 (TAPA-1)	PE	EAT 2	Mouse IgG1	Mouse	F	50 µg	<b>CL8981PE</b>
CD88 (C5a Receptor)	Purified	8D6	Rat IgG2a	Human	F	250 µg	<b>CL7688AP</b>
CD88 (C5a Receptor)	Biotin	8D6	Rat IgG2a	Human	F	100 µg	<b>CL7688B</b>
CD88 (C5a Receptor)	FITC	8D6	Rat IgG2a	Human	F	100 µg	<b>CL7688F</b>
CD88 (C5a Receptor)	PE	8D6	Rat IgG2a	Human	F	50 µg	<b>CL7688PE</b>
CD88 (C5a receptor)	Purified	20/70	Rat IgG2b	Mouse	F, IF, Blocking	250 µg	<b>CL7588AP</b>
CD88 (C5a receptor)	Biotin	20/70	Rat IgG2b	Mouse	F, IF, Blocking	100 µg	<b>CL7588B</b>
CD88 (C5a receptor)	FITC	20/70	Rat IgG2b	Mouse	F, IF,	100 µg	<b>CL7588F</b>
CD88 (C5a receptor)	Low Endotoxin	20/70	Rat IgG2b	Mouse	Blocking	500 µg	<b>CL7588LE</b>
CD88 (C5a receptor)	PE	20/70	Rat IgG2b	Mouse	F, IF, Blocking	50 µg	<b>CL7588PE</b>
CD90 (Thy 1.1)	Purified	OX-7	Mouse IgG1	Rat/Mouse	F, IP, C, FN	250 µg	<b>CL005AP</b>
CD90 (Thy 1.1)	Biotin	OX-7	Mouse IgG1	Rat/Mouse	F, C	100 µg	<b>CL005B</b>
CD90 (Thy 1.1)	FITC	OX-7	Mouse IgG1	Rat/Mouse	F	100 µg	<b>CL005F</b>
CD90 (Thy 1.1)	LE	OX-7	Mouse IgG1	Rat/Mouse	FN	500 µg	<b>CL005LE</b>
CD90 (Thy 1.1)	PE	OX-7	Mouse IgG1	Rat/Mouse	F	50 µg	<b>CL005PE</b>
CD90 (Thy 1.2)	Purified	5a-8	Mouse IgG2b	Mouse	F, CT, C	250 µg	<b>CL8600AP</b>
CD90 (Thy 1.2)	APC	5a-8	Mouse IgG2b	Mouse	F	100 µg	<b>CL8600APC</b>
CD90 (Thy 1.2)	Biotin	5a-8	Mouse IgG2b	Mouse	F, C	100 µg	<b>CL8600B</b>
CD90 (Thy 1.2)	FITC	5a-8	Mouse IgG2b	Mouse	F, IF	100 µg	<b>CL8600F</b>
CD90 (Thy 1.2)	PE	5a-8	Mouse IgG2b	Mouse	F	50 µg	<b>CL8600PE</b>
CD103 (Dendritic Cells) (alpha E2 Intergrin)	Purified	OX-62	Mouse IgG1	Rat	F, C	250 µg	<b>CL083AP</b>
CD103 (Dendritic Cells) (alpha E2 Intergrin)	FITC	OX-62	Mouse IgG1	Rat	F	100 µg	<b>CL083F</b>
CD103 (Integrin alpha E/β7)	Purified	BP6	Mouse IgG1,k	Human	IF, IP, F	200 µg	<b>CL7615AP</b>
CD103 (Integrin alpha E/β7)	APC	BP6	Mouse IgG1,k	Human	IF, F	100 µg	<b>CL7615APC</b>
CD103 (Integrin alpha E/β7)	Biotin	BP6	Mouse IgG1,k	Human	IF, IP, F	100 µg	<b>CL7615B</b>
CD103 (Integrin alpha E/β7)	FITC	BP6	Mouse IgG1,k	Human	IF, F	100 µg	<b>CL7615F</b>
CD103 (Integrin alpha E/β7)	PE	BP6	Mouse IgG1,k	Human	F	50 µg	<b>CL7615PE</b>
CD105 (Endoglin)	Purified	MJ7/18	Rat IgG2a,k	Mouse	WB, IP, IHC, F	250 µg	<b>CL8983AP</b>
CD105 (Endoglin)	Biotin	MJ7/18	Rat IgG2a,k	Mouse	WB, IP, IHC, F	100 µg	<b>CL8983B</b>
CD105 (Endoglin)	FITC	MJ7/18	Rat IgG2a,k	Mouse	WB, IP, IHC, F	100 µg	<b>CL8983F</b>
CD105 (Endoglin)	PE	MJ7/18	Rat IgG2a,k	Mouse	WB, IP, IHC, F	50 µg	<b>CL8983PE</b>
CD107b (Mac-3)	Purified	M3/84	Rat IgG1	Mouse	F, C, CT, IP	100 µg	<b>CL8943AP</b>
CD107b (Mac-3)	Biotin	M3/84	Rat IgG1	Mouse	F, C	100 µg	<b>CL8943B</b>
CD107b (Mac-3)	FITC	M3/84	Rat IgG1	Mouse	F	100 µg	<b>CL8943F</b>
CD107b (Mac-3)	PE	M3/84	Rat IgG1	Mouse	F	50 µg	<b>CL8943PE</b>
CD117 (c-kit)	Purified	ACK4	Rat IgG2a	Mouse	E, IF, IHC, WB, IP, F	250 µg	<b>CL8936AP</b>
CD117 (c-kit)	Biotin	ACK4	Rat IgG2a	Mouse	E, IF, IHC, WB, IP, F	100 µg	<b>CL8936B</b>
CD117 (c-kit)	FITC	ACK4	Rat IgG2a	Mouse	F	100 µg	<b>CL8936F</b>
CD117 (c-kit)	PE	ACK4	Rat IgG2a	Mouse	F	50 µg	<b>CL8936PE</b>
CD122 (IL-2R β)	Purified	TM-B1	Rat IgG2b	Mouse	F, IP, N	200 µg	<b>CL8951AP</b>
CD122 (IL-2R β)	Biotin	TM-B1	Rat IgG2b	Mouse	F, IP	100 µg	<b>CL8951B</b>
CD134 (OX-40 Antigen)	Purified	OX-86	Rat IgG1	Mouse	F	250 µg	<b>CL8967AP</b>
CD134 (OX-40 Antigen)	Biotin	OX-86	Rat IgG1	Mouse	F	100 µg	<b>CL8967B</b>
CD134 (OX-40 Antigen)	FITC	OX-86	Rat IgG1	Mouse	F	100 µg	<b>CL8967F</b>
CD134 (OX-40 Antigen)	PE	OX-86	Rat IgG1	Mouse	F	50 µg	<b>CL8967PE</b>
CD134L/OX40L	Purified	OX89	Rat IgG1	Mouse	F, IHC, FN	250 µg	<b>CL8966AP</b>
CD134L/OX40L	Biotin	OX89	Rat IgG1	Mouse	F, IHC	100 µg	<b>CL8966B</b>
CD134L/OX40L	FITC	OX89	Rat IgG1	Mouse	F	100 µg	<b>CL8966F</b>
CD134L/OX40L	PE	OX89	Rat IgG1	Mouse	F, IHC, FN	50 µg	<b>CL8966PE</b>



**Mouse C5a Receptor (CD88) (CL7588)**  
C57BL/6 mouse bone marrow stained with anti-CD88 (clone: 20/70) and anti-Gr-1 (clone: RB6-8C5).

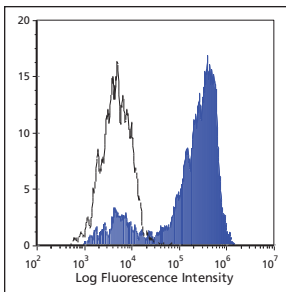


**Rat/Mouse CD90 (Thy 1.1) (CL005)**  
Wistar rat thymocytes (above) and splenocytes (below) stained with anti-CD90 (clone: OX-7) (filled histograms) or mouse IgG1, k isotype control (open histograms).

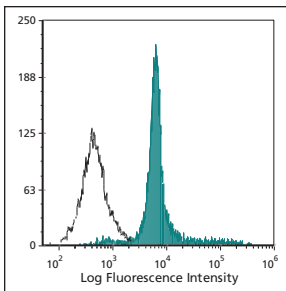


**Legend for Applications:**

<b>AC</b>	=Affinity Chromatography
<b>AGG</b>	=Agglutination
<b>C</b>	=Cryostat Sections
<b>CT</b>	=Cytotoxicity Assay
<b>D</b>	=Depletion
<b>E</b>	=ELISA
<b>EC</b>	=ELISA (Capture)
<b>ED</b>	=ELISA (Detection)
<b>F</b>	=Flow Cytometry
<b>FN</b>	=Functional Assay
<b>IC</b>	=Immunocytochemistry
<b>ID</b>	=Immunodiffusion
<b>IF</b>	=Immunofluorescence
<b>IP</b>	=Immunoprecipitation
<b>IV</b>	=In vivo Assay
<b>N</b>	=Neutralization
<b>P</b>	=Paraffin-Embedded Sections
<b>R</b>	=RIA
<b>WB</b>	=Western Blotting

**Mouse CD160 (CL8989)**

C3H/HE intestinal intraepithelial lymphocytes stained with anti-mouse CD160 (clone: CNX46-3) (filled histogram) or mouse IgG2b, κ isotype control (open histogram).

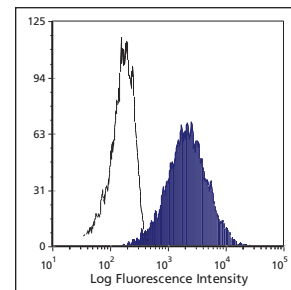
**Human Complement Component C1q (CL7611)**

Balb/c mouse thymocytes incubated with anti-mouse CD90 (Thy 1.2) (clone: 5a-8) + fresh human serum + 5 mM EDTA stained with anti-C1q (clone: MhC5B9) (filled histogram) or mouse IgG1 isotype control (open histogram).

Specificity	Format	Clone	Isotype	Species Reactivity	Applications	Size	Cat. #
CD147	Purified	OX114	Rat IgG1	Mouse	F, WB, IHC	250 µg	CL8975AP
CD147	Biotin	OX114	Rat IgG1	Mouse	F	100 µg	CL8975B
CD147	FITC	OX114	Rat IgG1	Mouse	F	100 µg	CL8975F
CD147	PE	OX114	Rat IgG1	Mouse	F	50 µg	CL8975PE
CD157	Purified	KT157	Rat IgG2c	Mouse	F	250 µg	CL8984AP
CD157	FITC	KT157	Rat IgG2c	Mouse	F	100 µg	CL8984F
CD160	Purified	CNX46-3	Mouse IgG2b,κ	Mouse	F, WB	250 µg	CL8989AP
CD160	APC	CNX46-3	Mouse IgG2b,κ	Mouse	F	100 µg	CL8989APC
CD160	Biotin	CNX46-3	Mouse IgG2b,κ	Mouse	F, WB	100 µg	CL8989B
CD160	FITC	CNX46-3	Mouse IgG2b,κ	Mouse	F, WB	100 µg	CL8989F
CD160	PE	CNX46-3	Mouse IgG2b,κ	Mouse	F, WB	50 µg	CL8989PE
CD161 (NK1.1)	Purified	PK136	Mouse IgG2a	Mouse	F	250 µg	CL8994AP
CD161 (NK1.1)	APC	PK136	Mouse IgG2a	Mouse	F	100 µg	CL8994APC
CD161 (NK1.1)	Biotin	PK136	Mouse IgG2a	Mouse	F	100 µg	CL8994B
CD161 (NK1.1)	PE	PK136	Mouse IgG2a	Mouse	F	50 µg	CL8994PE
CD163	Purified	GHI/61	Mouse IgG1,κ	Human	WB, IP, C, F	200 µg	CL7617AP
CD163	APC	GHI/61	Mouse IgG1,κ	Human	F	100 µg	CL7617APC
CD163	Biotin	GHI/61	Mouse IgG1,κ	Human	WB, IP, C, F	100 µg	CL7617B
CD163	FITC	GHI/61	Mouse IgG1,κ	Human	F, C	100 µg	CL7617F
CD163	PE	GHI/61	Mouse IgG1,κ	Human	F	50 µg	CL7617PE
CD172a (Signal-Regulatory Protein)	Purified	OX-41	Mouse IgG2a	Rat	F, WB, C, E, IP, IF	250 µg	CL041AP
CD172a (Signal-Regulatory Protein)	Biotin	OX-41	Mouse IgG2a	Rat	F, C	100 µg	CL041B
CD172a (Signal-Regulatory Protein)	FITC	OX-41	Mouse IgG2a	Rat	F	100 µg	CL041F
CD172a (Signal-Regulatory Protein)	PE	OX-41	Mouse IgG2a	Rat	F	50 µg	CL041PE
CD200	Purified	OX90	Rat IgG2a	Mouse	F, IHC, E	250 µg	CL8995AP
CD200	Biotin	OX90	Rat IgG2a	Mouse	F	100 µg	CL8995B
CD200	FITC	OX90	Rat IgG2a	Mouse	F	100 µg	CL8995F
CD200	PE	OX90	Rat IgG2a	Mouse	F	50 µg	CL8995PE
CD200R	Purified	OX110	Rat IgG1	Mouse	F	250 µg	CL8996AP
CD200R	Biotin	OX110	Rat IgG1	Mouse	F	100 µg	CL8996B
CD200R	FITC	OX110	Rat IgG1	Mouse	F	100 µg	CL8996F
CD200R	PE	OX110	Rat IgG1	Mouse	F	50 µg	CL8996PE
CD205 (surface marker) (DEC-205)	Purified	NLDC-145	Rat IgG2a	Mouse	F, C, P	100T	CL89145
CD205 (surface marker) (DEC-205)	Biotin	NLDC-145	Rat IgG2a	Mouse	F, C, P	100 µg	CL89145B
CD205 (surface marker) (DEC-205)	FITC	NLDC-145	Rat IgG2a	Mouse	F	100 µg	CL89145F
CD205 (surface marker) (DEC-205)	PE	NLDC-145	Rat IgG2a	Mouse	F	50 µg	CL89145PE
CD235a	Purified	YTH 89.1	Rat IgG2b	Human	F, WB	200 µg	CL7607AP
CD235a	APC	YTH 89.1	Rat IgG2b	Human	F	100 µg	CL7607APC
CD235a	Biotin	YTH 89.1	Rat IgG2b	Human	F, WB	100 µg	CL7607B
CD235a	FITC	YTH 89.1	Rat IgG2b	Human	F	100 µg	CL7607F
CD235a	PE	YTH 89.1	Rat IgG2b	Human	F	50 µg	CL7607PE
CD279 (PD-1)	Purified	J43	Hamster IgG	Mouse	F	250 µg	CL8982AP
CD279 (PD-1)	Biotin	J43	Hamster IgG	Mouse	F	100 µg	CL8982B
CD279 (PD-1)	FITC	J43	Hamster IgG	Mouse	F	100 µg	CL8982F
CD279 (PD-1)	PE	J43	Hamster IgG	Mouse	F	50 µg	CL8982PE
Complement Component C1q	Purified	MhC5B9	Mouse IgG1	Human	IF, C, WB, E	250 µg	CL7611AP
Complement Component C1q	APC	MhC5B9	Mouse IgG1	Human	F	100 µg	CL7611APC
Complement Component C1q	Biotin	MhC5B9	Mouse IgG1	Human	F, IF	100 µg	CL7611B
Complement Component C1q	FITC	MhC5B9	Mouse IgG1	Human	F, IF	100 µg	CL7611F
Complement Component C1q	PE	MhC5B9	Mouse IgG1	Human	F	50 µg	CL7611PE
Complement Component C1q	Purified	RmC7H8	Rat IgG1	Mouse	IF, C, WB, E	250 µg	CL7501AP
Complement Component C1q	Biotin	RmC7H8	Rat IgG1	Mouse	IF, E, WB	100 µg	CL7501B
Complement Component C1q	FITC	RmC7H8	Rat IgG1	Mouse	IF	100 µg	CL7501F
Complement Component C1q	PE	RmC7H8	Rat IgG1	Mouse	IF, E, WB, F	50 µg	CL7501PE

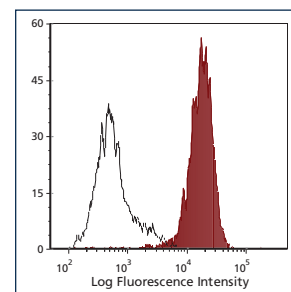
Specificity	Format	Clone	Isotype	Species Reactivity	Applications	Size	Cat. #
Complement Component C3	Purified	RmC11H9	Rat IgG2a	Mouse	IF, C, WB, E	250 µg	<b>CL7503AP</b>
Complement Component C3	APC	RmC11H9	Rat IgG2a	Mouse	IF, F	100 µg	<b>CL7503APC</b>
Complement Component C3	Biotin	RmC11H9	Rat IgG2a	Mouse	IF, E, WB, F, IHC, C	100 µg	<b>CL7503B</b>
Complement Component C3	FITC	RmC11H9	Rat IgG2a	Mouse	IF	100 µg	<b>CL7503F</b>
Complement Component C3	PE	RmC11H9	Rat IgG2a	Mouse	IF, E, WB, F, IHC, C	50 µg	<b>CL7503PE</b>
Complement Component C3	TRITC	RmC11H9	Rat IgG2a	Mouse	IF	100 µg	<b>CL7503TRC</b>
Dendritic Cells (cytoplasmic marker)	Purified	MIDC-8	Rat IgG2a	Mouse	C	100 µg	<b>CL89148</b>
Erythrocytes	Purified	OX-83	Mouse IgG1	Rat	F	250 µg	<b>CL089AP</b>
Erythrocytes	Biotin	OX-83	Mouse IgG1	Rat	F	100 µg	<b>CL089B</b>
Erythrocytes	FITC	OX-83	Mouse IgG1	Rat	F	100 µg	<b>CL089F</b>
Erythroid Cells (Ly-76)	Purified	TER-119	Rat IgG2b	Mouse	F, C, IP, WB	250 µg	<b>CL8926AP</b>
Erythroid Cells (Ly-76)	Biotin	TER-119	Rat IgG2b	Mouse	F, C, IP	100 µg	<b>CL8926B</b>
Erythroid Cells (Ly-76)	FITC	TER-119	Rat IgG2b	Mouse	F	100 µg	<b>CL8926F</b>
Erythroid Cells (Ly-76)	LE	TER119	Rat IgG2b	Mouse	F, C, IP, WB	500 µg	<b>CL8926LE</b>
Erythroid Cells (Ly-76)	PE	TER-119	Rat IgG2b	Mouse	F	50 µg	<b>CL8926PE</b>
F4/80 Antigen-Pan Macrophage	Purified	C1:A3-1	Rat IgG2b	Mouse	F	200 µg	<b>CL8940AP</b>
F4/80 Antigen-Pan Macrophage	Biotin	C1:A3-1	Rat IgG2b	Mouse	F	100 µg	<b>CL8940B</b>
F4/80 Antigen-Pan Macrophage	FITC	C1:A3-1	Rat IgG2b	Mouse	F	100 µg	<b>CL8940F</b>
F4/80 Antigen-Pan Macrophage	PE	C1:A3-1	Rat IgG2b	Mouse	F	50 µg	<b>CL8940PE</b>
Gamma/Delta TCR	Purified	GL3	Hamster IgG	Mouse	F, C	250 µg	<b>CL7201AP</b>
Gamma/Delta TCR	Biotin	GL3	Hamster IgG	Mouse	F, C	100 µg	<b>CL7201B</b>
Gamma/Delta TCR	FITC	GL3	Hamster IgG	Mouse	F	100 µg	<b>CL7201F</b>
Gamma/Delta TCR	PE	GL3	Hamster IgG	Mouse	F	50 µg	<b>CL7201PE</b>
Gamma/Delta TCR	PE-Cy5	GL3	Hamster IgG	Mouse	F	100 µg	<b>CL7201TC</b>
Granulocytes (Gr-1, Ly 6G)	Purified	RB6-8C5	Rat IgG2b	Mouse	F, CT, WB, P, C	250 µg	<b>CL8991AP</b>
Granulocytes (Gr-1, Ly 6G)	APC	RB6-8C5	Rat IgG2b	Mouse	F	100 µg	<b>CL8991APC</b>
Granulocytes (Gr-1, Ly 6G)	Biotin	RB6-8C5	Rat IgG2b	Mouse	F, WB, P, C	100 µg	<b>CL8991B</b>
Granulocytes (Gr-1, Ly 6G)	FITC	RB6-8C5	Rat IgG2b	Mouse	F	100 µg	<b>CL8991F</b>
Granulocytes (Gr-1, Ly 6G)	PE	RB6-8C5	Rat IgG2b	Mouse	F	50 µg	<b>CL8991PE</b>
H-2Db	Purified	B22-249.R1	Mouse IgG2a	Mouse	F, CT	250 µg	<b>CL9001AP</b>
H-2Db	Biotin	B22-249.R1	Mouse IgG2a	Mouse	F	100 µg	<b>CL9001B</b>
H-2Db	FITC	B22-249.R1	Mouse IgG2a	Mouse	F	100 µg	<b>CL9001F</b>
H-2KbDb	Purified	5041.16.1	Mouse IgG2a	Mouse	F, CT	250 µg	<b>CL9007AP</b>
H-2KbDb	Biotin	5041.16.1	Mouse IgG2a	Mouse	F	100 µg	<b>CL9007B</b>
H-2KbDb	FITC	5041.16.1	Mouse IgG2a	Mouse	F	100 µg	<b>CL9007F</b>
H-2KbDb	PE	5041.16.1	Mouse IgG2a	Mouse	F	50 µg	<b>CL9007PE</b>
H-2KdDd	Purified	34-1-2S	Mouse IgG2a	Mouse	F, CT	250 µg	<b>CL9023AP</b>
H-2KdDd	Biotin	34-1-2S	Mouse IgG2a	Mouse	F	100 µg	<b>CL9023B</b>
H-2KdDd	FITC	34-1-2S	Mouse IgG2a	Mouse	F	100 µg	<b>CL9023F</b>
H-2KdDd	PE	34-1-2S	Mouse IgG2a	Mouse	F	50 µg	<b>CL9023PE</b>
H-2Ld	Purified	30-5-7S	Mouse IgG2a	Mouse	CT, F, FN	250 µg	<b>CL9011AP</b>
H-2Ld	Biotin	30-5-7S	Mouse IgG2a	Mouse	CT, F	100 µg	<b>CL9011B</b>
H-2Ld	FITC	30-5-7S	Mouse IgG2a	Mouse	CT, F	100 µg	<b>CL9011F</b>
H-2Ld	PE	30-5-7S	Mouse IgG2a	Mouse	F	50 µg	<b>CL9011PE</b>
HLA-A2	PE	BB7.2	Mouse IgG2b	Human	F	100 tests	<b>CLX372PE</b>
HLA-ABC	Purified	W6/32 HLK	Mouse IgG2a	Human	F, CT, IP	500 µg	<b>CLHLA-01AP</b>
HLA-ABC	Biotin	W6/32 HLK	Mouse IgG2a	Human	F	100 µg	<b>CLHLA-01B</b>
HLA-ABC	FITC	W6/32 HLK	Mouse IgG2a	Human	F	100 µg	<b>CLHLA-01F</b>
HLA-ABC	PE	W6/32 HLK	Mouse IgG2a	Human	F	50 µg	<b>CLHLA-01PE</b>
HLA-DR	Purified	YE2/36 HLK	Rat IgG2a	Human	F, C, P	500 µg	<b>CLHLA-02AP</b>
HLA-DR	Biotin	YE2/36 HLK	Rat IgG2a	Human	F	100 µg	<b>CLHLA-02B</b>
HLA-DR	FITC	YE2/36 HLK	Rat IgG2a	Human	F	100 µg	<b>CLHLA-02F</b>
HLA-DR	Purified	YD1/63.4.10	Rat IgG2a	Human	F, C, P	500 µg	<b>CLHLA-03AP</b>
HLA-DR	Biotin	YD1/63.4.10	Rat IgG2a	Human	F	100 µg	<b>CLHLA-03B</b>
HLA-DR	FITC	YD1/63.4.10	Rat IgG2a	Human	F	100 µg	<b>CLHLA-03F</b>
HLA-DR	PE	YD1/63.4.10	Rat IgG2a	Human	F	50 µg	<b>CLHLA-03PE</b>

Please inquire about additional formats/sizes and azide free products.



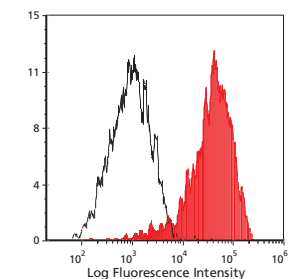
#### Rat Erythrocytes (CL089)

Fischer rat erythrocytes stained with anti-erythrocytes (clone: OX-83) (filled histogram) or mouse IgG1,  $\kappa$  isotype control (open histogram).



#### Human HLA-ABC (CLHLA-01)

Human peripheral blood lymphocytes stained with anti-HLA-ABC (clone: W6/32) (filled histogram) or Mouse IgG2a isotype control (open histogram).



#### Anti-Mouse/Human Mac-2 (Galectin-3) (CL8942)

Thioglycolate-elicited C57BL/6 mouse peritoneal macrophages stained with anti-Galectin-3 (clone: M3/38) (filled histogram) or rat IgG2a isotype control (open histogram).

### Legend for Applications:

<b>AC</b>	=Affinity Chromatography
<b>AGG</b>	= Agglutination
<b>C</b>	=Cryostat Sections
<b>CT</b>	=Cytotoxicity Assay
<b>D</b>	=Depletion
<b>E</b>	=ELISA
<b>EC</b>	=ELISA (Capture)
<b>ED</b>	=ELISA (Detection)
<b>F</b>	=Flow Cytometry
<b>FN</b>	=Functional Assay
<b>IC</b>	=Immunocytochemistry
<b>ID</b>	=Immunodiffusion
<b>IF</b>	=Immunofluorescence
<b>IP</b>	=Immunoprecipitation
<b>IV</b>	=In vivo Assay
<b>N</b>	=Neutralization
<b>P</b>	=Paraffin-Embedded Sections
<b>R</b>	=RIA
<b>WB</b>	=Western Blotting

Specificity	Format	Clone	Isotype	Species Reactivity	Applications	Size	Cat. #
I-Ab	Purified	28-16-8S	Mouse IgM	Mouse	F, CT	250 µg	CL8702AP
I-Ab	Biotin	28-16-8S	Mouse IgM	Mouse	F	100 µg	CL8702B
I-Ab	FITC	28-16-8S	Mouse IgM	Mouse	F	100 µg	CL8702F
I-Ab	PE	28-16-8S	Mouse IgM	Mouse	F	50 µg	CL8702PE
I-Ad	Biotin	34-5-3S	Mouse IgG2a	Mouse	F	100 µg	CL8713B
I-Ad	FITC	34-5-3S	Mouse IgG2a	Mouse	F	100 µg	CL8713F
I-Ad	PE	34-5-3S	Mouse IgG2a	Mouse	F	50 µg	CL8713PE
IgE	Purified	BES	Mouse IgG	Human	F, E	0.1 mg	CLX165AP
IgE	FITC	BES	Mouse IgG	Human	F, E	0.1 mg	CLX165F
IgE	PE	BES	Mouse IgG	Human	F, E	0.1 mg	CLX165PE
IgG Fd	Purified	HP6045	Mouse IgG1	Human	F, WB, E	200 µg	CL6045AP
IgG Fd	Biotin	HP6045	Mouse IgG1	Human	F, WB, E	100 µg	CL6045B
IgG Fd	FITC	HP6045	Mouse IgG1	Human	F	100 µg	CL6045F
IgG Fd	PE	HP6045	Mouse IgG1	Human	F	50 µg	CL6045PE
Ly 6A/E (Sca-1)	Purified	D7	Rat IgG2a	Mouse	F	200 µg	CL8948AP
Ly 6A/E (Sca-1)	Biotin	D7	Rat IgG2a	Mouse	F	100 µg	CL8948B
Ly 6A/E (Sca-1)	PE	D7	Rat IgG2a	Mouse	F	50 µg	CL8948PE
Mac-2 (Gal-3, Galectin-3)	Purified	M3/38	Rat IgG2a	Human/Mouse	F, IF, C, E, P, WB	100 µg	CL8942AP
Mac-2 (Gal-3, Galectin-3)	Biotin	M3/38	Rat IgG2a	Human/Mouse	F, IF, C, E, P, WB	100 µg	CL8942B
Mac-2 (Gal-3, Galectin-3)	FITC	M3/38	Rat IgG2a	Human/Mouse	F, IF	100 µg	CL8942F
Mac-2 (Gal-3, Galectin-3)	LE	M3/38	Rat IgG2a	Human/Mouse	F, IF, C, E, P, WB	500 µg	CL8942LE
Neutrophils	Purified	7/4	Rat IgG2a	Mouse	F, C, P	100 µg	CL8993AP
Neutrophils	Biotin	7/4	Rat IgG2a	Mouse	F, C, P	100 µg	CL8993B
Neutrophils	FITC	7/4	Rat IgG2a	Mouse	F	100 µg	CL8993F
Neutrophils	PE	7/4	Rat IgG2a	Mouse	F	50 µg	CL8993PE
R-PE	Purified	Polyclonal	Rabbit IgG	Mouse	F, IHC, E	500 µg	CL8888AP
R-PE	FITC	Polyclonal	Rabbit IgG	Mouse	F, IHC	100 µg	CL8888F
RT1.A (Class I)	Purified	OX-18	Mouse IgG1	Rat	F, IP, C	250 µg	CL007AP
RT1.A (Class I)	Biotin	OX-18	Mouse IgG1	Rat	F, C	100 µg	CL007B
RT1.A (Class I)	FITC	OX-18	Mouse IgG1	Rat	F	100 µg	CL007F
RT1.Ac (Class I)	Purified	OX-27	Mouse IgG2a	Rat	F, IP, C	250 µg	CL027AP
RT1.Ac (Class I)	Biotin	OX-27	Mouse IgG2a	Rat	F, C	100 µg	CL027B
RT1.Ac (Class I)	FITC	OX-27	Mouse IgG2a	Rat	F	100 µg	CL027F
RT1.Bu (I-Ab,s)	Purified	OX-3	Mouse IgG1	Rat	F, IP, C	250 µg	CL008AP
RT1.Bu (I-Ab,s)	Biotin	OX-3	Mouse IgG1	Rat	F, C	100 µg	CL008B
RT1.Bu (I-Ab,s)	FITC	OX-3	Mouse IgG1	Rat	F	100 µg	CL008F
RT1.Bu (I-Ab,s)	PE	OX-3	Mouse IgG1	Rat	F	50 µg	CL008PE
TLR2	Purified	IIG7	Mouse IgG2	Human	F, IP, E	200 µg	CL7622AP
TLR2	Biotin	IIG7	Mouse IgG1	Human	F	100 µg	CL7622B
TLR2	FITC	IIG7	Mouse IgG1	Human	F	100 µg	CL7622F
TLR2	PE	IIG7	Mouse IgG1	Human	F	50 µg	CL7622PE