

official distributor

SZABO-SCANDIC HandelsgmbH  
Quellenstraße 110, A-1100 Wien  
T. +43(0)1 489 3961-0  
F. +43(0)1 489 3961-7  
mail@szabo-scandic.com  
www.szabo-scandic.com



SZABO  
SCANDIC

TOOLS FOR MONOCYTE AND MACROPHAGE RESEARCH

# Tools for Monocyte and Macrophage Research

Lympholyte® Cell Separation Media

Antibodies

ELISA Kits

[www.cedarlanelabs.com](http://www.cedarlanelabs.com)

**CEDARLANE®** 

CEDARLANE® is an ISO 9001 and ISO 13485 registered company

# Lympholyte®

CEDARLANE's Lympholyte® Cell Separation density gradient centrifugation media has been specifically designed for the isolation of viable lymphocytes from mouse, rat, rabbit, human and other mammalian cell populations. The resulting cell population demonstrates a high, nonselective recovery of viable lymphocytes that are suitable for use as target cells in cytotoxicity and FACS assays and *in vivo* / *in vitro* functional studies. All products are supplied as sterile liquid with varying densities.

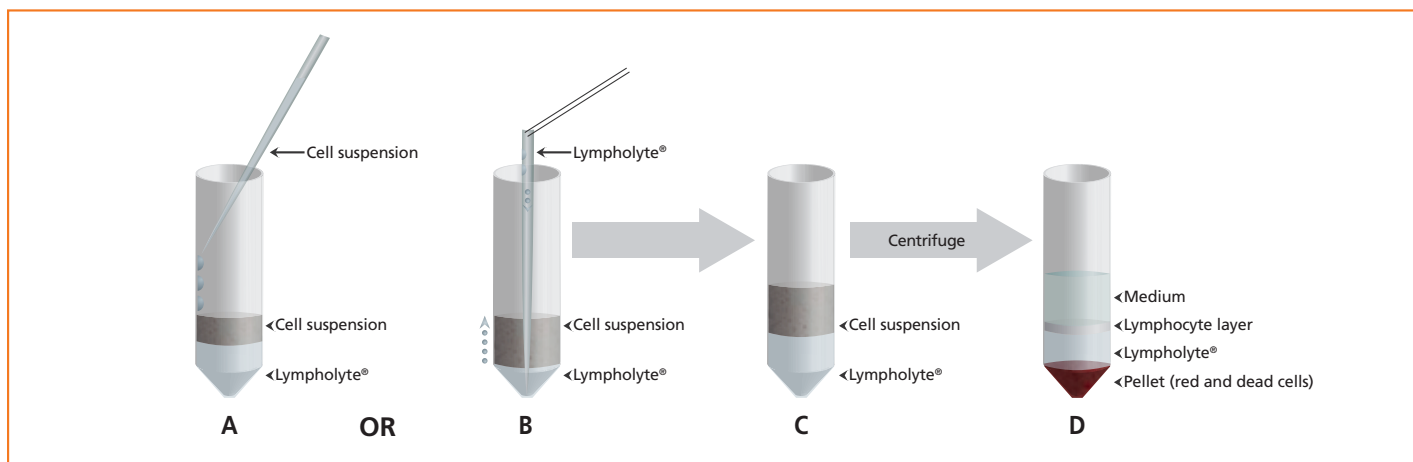
## Applications for Lympholyte® include:

- Isolation of viable lymphocytes from lymphoid organs by removal of red and dead cells.
- Removal of dead cells from lymphocyte suspensions; for example, after treatment with antibody plus complement or following cell culture.

## Lympholyte® Cell Separation Media

Product	Density	Size	Main Application	Cat. #
Lympholyte®-H Cell Separation Media <b>CE</b>	1.0770 ± 0.001 @ 25°C, g/ml	5x30 mL	Isolation of viable <b>HUMAN</b> lymphocytes from peripheral blood	<b>CL5010</b>
	1.0770 ± 0.001 @ 25°C, g/ml	100 mL	Isolation of viable <b>HUMAN</b> lymphocytes from peripheral blood	<b>CL5015</b>
	1.0770 ± 0.001 @ 25°C, g/ml	6x100 mL	Isolation of viable <b>HUMAN</b> lymphocytes from peripheral blood	<b>CL5016</b>
	1.0770 ± 0.001 @ 25°C, g/ml	500 mL	Isolation of viable <b>HUMAN</b> lymphocytes from peripheral blood	<b>CL5020</b>
	1.0770 ± 0.001 @ 25°C, g/ml	6x500 mL	Isolation of viable <b>HUMAN</b> lymphocytes from peripheral blood	<b>CL5026</b>
Lympholyte®-M Cell Separation Media	1.0875 ± 0.001 @ 25°C, g/ml	5x30 mL	Isolation of viable <b>MOUSE</b> lymphocytes from lymphoid tissue	<b>CL5030</b>
	1.0875 ± 0.001 @ 25°C, g/ml	100 mL	Isolation of viable <b>MOUSE</b> lymphocytes from lymphoid tissue	<b>CL5031</b>
	1.0875 ± 0.001 @ 25°C, g/ml	500 mL	Isolation of viable <b>MOUSE</b> lymphocytes from lymphoid tissue	<b>CL5035</b>
Lympholyte®-Mammal Cell Separation Media <b>For species tested, please contact tech@cedarlanelabs.com</b>	1.0860 ± 0.001 @ 25°C, g/ml	5x30 mL	Isolation of viable lymphocytes from peripheral blood of most <b>mammalian</b> species	<b>CL5110</b>
	1.0860 ± 0.001 @ 25°C, g/ml	100 mL	Isolation of viable lymphocytes from peripheral blood of most <b>mammalian</b> species	<b>CL5115</b>
	1.0860 ± 0.001 @ 25°C, g/ml	500 mL	Isolation of viable lymphocytes from peripheral blood of most <b>mammalian</b> species	<b>CL5120</b>
Lympholyte®-Rabbit Cell Separation Media	1.0965 ± 0.001 @ 25°C, g/ml	5x30 mL	Isolation of viable <b>RABBIT</b> lymphocytes from lymphoid tissue	<b>CL5050</b>
Lympholyte®-R Cell Separation Media	1.0940 ± 0.001 @ 25°C, g/ml	5x30 mL	Isolation of viable <b>RAT</b> lymphocytes from lymphoid tissue	<b>CL5040</b>
	1.0940 ± 0.001 @ 25°C, g/ml	100 mL	Isolation of viable <b>RAT</b> lymphocytes from lymphoid tissue	<b>CL5041</b>
	1.0940 ± 0.001 @ 25°C, g/ml	500 mL	Isolation of viable <b>RAT</b> lymphocytes from lymphoid tissue	<b>CL5045</b>
Lympholyte®-Poly Cell Separation Media	1.113 ± 0.001 @ 25°C, g/ml	100 mL	Isolation of viable <b>HUMAN</b> polymorphonuclear cells	<b>CL5070</b>
	1.113 ± 0.001 @ 25°C, g/ml	250 mL	Isolation of viable <b>HUMAN</b> polymorphonuclear cells	<b>CL5071</b>
Lympholyte®-1.1	1.100 ± 0.001 @ 25°C, g/ml	500 mL	A high density Lympholyte® solution which can be diluted with PBS (withough Ca <sup>2+</sup> /Mg <sup>2+</sup> ). Isolation of pancreatic islet cells prior to expanding them <i>in vitro</i>	<b>CL5095</b>

## Procedure Overview



# Antibodies to Monocyte and Macrophage Markers

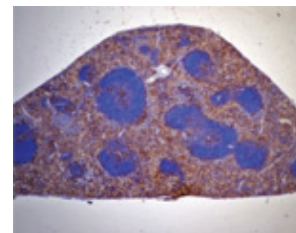
Monocytes are a type of white blood cell (leukocyte) that originate from hematopoietic stem cell precursors called monoblasts in the bone marrow. Monocytes leave the bone marrow and circulate in the bloodstream for about one to three days and then typically move into tissues throughout the body by a mechanism called leukocyte extravasation. Once in the tissues, monocytes mature and differentiate into tissue-resident macrophages or dendritic cells. Both macrophages and monocytes are phagocytes, acting in both non-specific defense (innate immunity) as well as to help initiate specific defense mechanisms (adaptive immunity) of vertebrate animals. Macrophages and monocytes phagocytose (engulf and then digest) cellular debris and pathogens and also stimulate lymphocytes and other immune cells to respond to the pathogens.

Cedarlane offers an extensive range of antibodies against monocyte- and macrophage-related antigens, providing customers a more comprehensive array of tools to study monocyte and macrophage biology. These antibodies are suitable for use in multiple applications and are offered in a variety of formats.

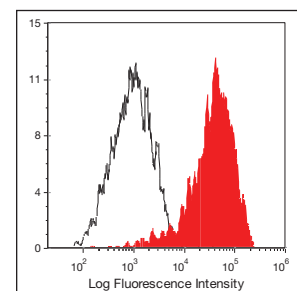
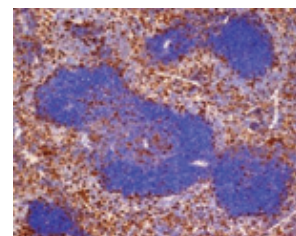
## Antibodies to Monocyte and Macrophage Markers

Specificity	Format	Clone	Isotype	Species Reactivity	Applications	Size	Cat. #
C3a receptor	Purified	74	Mouse IgG1	Rat	F, C	250 µg	<b>CL031AP</b>
C3a receptor	Biotin	74	Mouse IgG1	Rat	F, C	100 µg	<b>CL031B</b>
C3a receptor	FITC	74	Mouse IgG1	Rat	F, C	100 µg	<b>CL031F</b>
C3a receptor	PE	74	Mouse IgG1	Rat	F, C	50 µg	<b>CL031PE</b>
C3aR	Purified	17	Mouse IgG2b	Human	F, C	100 µg	<b>CL7322AP</b>
CD antigens, please see pages 4-10							
CXCL16	Purified	Polyclonal	Goat IgG	Mouse	N, E, WB	50 µg	<b>CL9194AP</b>
CXCL16	Biotin	Polyclonal	Goat IgG	Mouse	E	25 µg	<b>CL9194B</b>
F4/80 Antigen-Pan Macrophage	Purified	C1:A3-1	Rat IgG2b	Mouse	F	200 µg	<b>CL8940AP</b>
F4/80 Antigen-Pan Macrophage	Biotin	C1:A3-1	Rat IgG2b	Mouse	F	100 µg	<b>CL8940B</b>
F4/80 Antigen-Pan Macrophage	FITC	C1:A3-1	Rat IgG2b	Mouse	F	100 µg	<b>CL8940F</b>
F4/80 Antigen-Pan Macrophage	PE	C1:A3-1	Rat IgG2b	Mouse	F	50 µg	<b>CL8940PE</b>
Galectin-3 (Gal-3, Mac-2)	Purified	M3/38	Rat IgG2a	Human/Mouse	F, IF, C, E, P, WB	100 µg	<b>CL8942AP</b>
Galectin-3 (Gal-3, Mac-2)	Biotin	M3/38	Rat IgG2a	Human/Mouse	F, IF, C, E, P, WB	100 µg	<b>CL8942B</b>
Galectin-3 (Gal-3, Mac-2)	FITC	M3/38	Rat IgG2a	Human/Mouse	F, IF	100 µg	<b>CL8942F</b>
Galectin-3 (Gal-3, Mac-2)	Low Endotoxin	M3/38	Rat IgG2a	Human/Mouse	F, IF, C, E, P, WB	500 µg	<b>CL8942LE</b>
GM-CSF	Purified	Polyclonal	Rabbit IgG	Mouse	N, E, WB	50 µg	<b>CL9165AP</b>
GM-CSF	Biotin	Polyclonal	Rabbit IgG	Mouse	E	25 µg	<b>CL9165B</b>
HLA-DQ1 + DQ3	Purified	HL-37	Mouse IgG3	Human	F, IP, WB	0.1 mg	<b>CLX86AP</b>
HLA-DR	Purified	YE2/36 HLK	Rat IgG2a	Human	F, C, P	500 µg	<b>CLHLA-02AP</b>
HLA-DR	Biotin	YE2/36 HLK	Rat IgG2a	Human	F, C, P	100 µg	<b>CLHLA-02B</b>
HLA-DR	FITC	YE2/36 HLK	Rat IgG2a	Human	F, C, P	100 µg	<b>CLHLA-02F</b>
HLA-DR	PE	YE2/36 HLK	Rat IgG2a	Human	F	50 µg	<b>CLHLA-02PE</b>
HLA-DR	Purified	YD1/63.4.10	Rat IgG2a	Human	F, C, P	500 µg	<b>CLHLA-03AP</b>
HLA-DR	Biotin	YD1/63.4.10	Rat IgG2a	Human	F	100 µg	<b>CLHLA-03B</b>
HLA-DR	FITC	YD1/63.4.10	Rat IgG2a	Human	F	100 µg	<b>CLHLA-03F</b>
HLA-DR	PE	YD1/63.4.10	Rat IgG2a	Human	F	50 µg	<b>CLHLA-03PE</b>

Please inquire about additional formats/sizes and azide-free products.



**Purified Anti-Mac-2 (CL8942AP)** staining of FB10A mouse spleen at 4x (above) and 10x (below) magnification. Anti-Mac-2 (CL8942AP) was used at a dilution of 1:1500 or 1:2000 with a 1 hour incubation at RT. Image provided by Nina Volokh, Baldwin Lab, Cleveland Clinic Foundation.

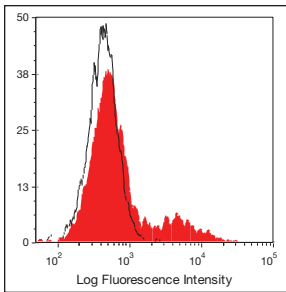


**Mouse/Human Mac-2 (Galectin-3) (CL8942)**

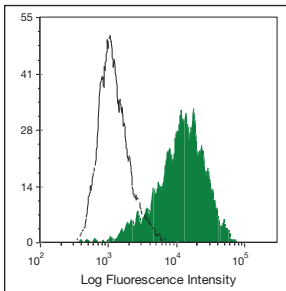
Thioglycollate-elicited C57BL/6 mouse peritoneal macrophages stained with anti-Galectin-3 (clone: M3/38) (filled histogram) or rat IgG2a isotype control (open histogram).

**Legend for Applications:**

**AC** =Affinity Chromatography  
**AGG** = Agglutination  
**C** =Cryostat Sections  
**CT** =Cytotoxicity Assay  
**D** =Depletion  
**E** =ELISA  
**EC** =ELISA (Capture)  
**ED** =ELISA (Detection)  
**F** =Flow Cytometry  
**FN** =Functional Assay  
**IC** =Immunocytochemistry  
**ID** =Immunodiffusion  
**IF** =Immunofluorescence  
**IP** =Immunoprecipitation  
**IV** =In vivo Assay  
**N** =Neutralization  
**P** =Paraffin-Embedded Sections  
**R** =RIA  
**WB** =Western Blotting

**Human HLA-DR (CLHLA-02)**

Human peripheral blood lymphocytes stained with anti-HLA-DR (clone: YE2/36 HLK) (filled histogram) or rat IgG2a isotype control (open histogram).

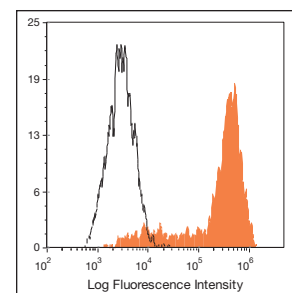
**Mouse Mac-3 (CL8943)**

Thioglycollate-elicited C57BL/6 mouse peritoneal macrophages stained with anti-Mac-3 (clone: M3/84) (filled histogram) or rat IgG1 isotype control (open histogram).

Specificity	Format	Clone	Isotype	Species Reactivity	Applications	Size	Cat. #
Lyn	Purified	LYN-01	Mouse IgG1	Human	IP, WB, IC	0.1 mg	<b>CLX192AP</b>
Mac-3	Purified	M3/84	Rat IgG1	Mouse	F, C, CT, IP	100 µg	<b>CL8943AP</b>
Mac-3	Biotin	M3/84	Rat IgG1	Mouse	F, C	100 µg	<b>CL8943B</b>
Mac-3	FITC	M3/84	Rat IgG1	Mouse	F	100 µg	<b>CL8943F</b>
Mac-3	PE	M3/84	Rat IgG1	Mouse	F	50 µg	<b>CL8943PE</b>
Macrophages (metallophilic)	Purified	MOMA-1	Rat IgG2a	Mouse	F, C	100 µg	<b>CL89149</b>
Macrophages (metallophilic)	Biotin	MOMA-1	Rat IgG2a	Mouse	F, C	100 µg	<b>CL89149B</b>
Macrophages (metallophilic)	FITC	MOMA-1	Rat IgG2a	Mouse	F, C	100 µg	<b>CL89149F</b>
Macrophages/Monocytes	Purified	MOMA-2	Rat IgG2b	Mouse	F, C (fresh tissue)	200 µg	<b>CL89154</b>
MPO (Myeloperoxidase)	Affinity Purified	Polyclonal	Rabbit IgG	Human	E	200 µg	<b>CL7649AP</b>
MPO (Myeloperoxidase)	Biotin	Polyclonal	Rabbit IgG	Human	E, WB	100 µg	<b>CL7649B</b>
MPO (Myeloperoxidase)	FITC	Polyclonal	Rabbit IgG	Human	E, WB	100 µg	<b>CL7649F</b>
RANTES (CCL5)	Purified	Polyclonal	Rabbit IgG	Mouse	N, E, WB	50 µg	<b>CL9187AP</b>
RANTES (CCL5)	Biotin	Polyclonal	Rabbit IgG	Mouse	E	25 µg	<b>CL9187B</b>
SHIP-1	Purified	SHIP-01	Mouse IgG2a	Human	F, WB	0.1 mg	<b>CLX392AP</b>
SHIP-1	Purified	SHIP-02	Mouse IgG2a	Human	F, WB	0.1 mg	<b>CLX393AP</b>
SLP-76n	Purified	SLP-76/03	Mouse IgG2b	Human	WB, P	0.1 mg	<b>CLX205AP</b>
CD4 (L3/T4; Ly4)	Purified	YTS 191.1.2	Rat IgG2b	Mouse	F, CT, IF, WB, IV	250 µg	<b>CL012AP</b>
CD4 (L3/T4; Ly4)	APC	YTS 191.1.2	Rat IgG2b	Mouse	F	100 µg	<b>CL012APC</b>
CD4 (L3/T4; Ly4)	Biotin	YTS 191.1.2	Rat IgG2b	Mouse	F, WB	100 µg	<b>CL012B</b>
CD4 (L3/T4; Ly4)	FITC	YTS 191.1.2	Rat IgG2b	Mouse	F	100 µg	<b>CL012F</b>
CD4 (L3/T4; Ly4)	Low Endotoxin	YTS 191.1.2	Rat IgG2b	Mouse	IV	500 µg	<b>CL012LE</b>
CD4 (L3/T4; Ly4)	PE	YTS 191.1.2	Rat IgG2b	Mouse	F	50 µg	<b>CL012PE</b>
CD4	Purified	MEM-241	Mouse IgG1	Human	F, WB	0.1 mg	<b>CLX06AP</b>
CD4	APC	MEM-241	Mouse IgG1	Human	F, WB	100 tests	<b>CLX06APC</b>
CD4	Biotin	MEM-241	Mouse IgG1	Human	F, WB	0.1 mg	<b>CLX06B</b>
CD4	FITC	MEM-241	Mouse IgG1	Human	F, WB	100 tests	<b>CLX06F</b>
CD4	PerCP	MEM-241	Mouse IgG1	Human	F	100 tests	<b>CLX06PCP</b>
CD4	PE	MEM-241	Mouse IgG1	Human	F	100 tests	<b>CLX06PE</b>
CD4	PE-Dyomics 647	MEM-241	Mouse IgG1	Human	F	100 tests	<b>CLX06PE-DY647</b>
CD11a (LFA-1a)	Purified	IBL-6/2	Rat IgG1	Mouse	C, F, IP	250 µg	<b>CL8985AP</b>
CD11a (LFA-1a)	Biotin	IBL-6/2	Rat IgG1	Mouse	F	100 µg	<b>CL8985B</b>
CD11a (LFA-1a)	FITC	IBL-6/2	Rat IgG1	Mouse	F	100 µg	<b>CL8985F</b>
CD11b (Mac-1; Ly 40; CR3a)	Purified	M1/70.15	Rat IgG2b	Human/Mouse	F, C, P, IP, WB, FN	250 µg	<b>CL8941AP</b>
CD11b (Mac-1; Ly 40; CR3a)	APC	M1/70.15	Rat IgG2b	Human/Mouse	F	100 µg	<b>CL8941APC</b>
CD11b (Mac-1; Ly 40; CR3a)	Biotin	M1/70.15	Rat IgG2b	Human/Mouse	F, C, P	100 µg	<b>CL8941B</b>
CD11b (Mac-1; Ly 40; CR3a)	FITC	M1/70.15	Rat IgG2b	Human/Mouse	F, IF	100 µg	<b>CL8941F</b>
CD11b (Mac-1; Ly 40; CR3a)	Low Endotoxin	M1/70.15	Rat IgG2b	Human/Mouse	FN	500 µg	<b>CL8941LE</b>
CD11b (Mac-1; Ly 40; CR3a)	PE	M1/70.15	Rat IgG2b	Human/Mouse	F	50 µg	<b>CL8941PE</b>
CD11b (Mac-1; Ly 40; CR3a)	PE-Cy5	M1/70.15	Rat IgG2b	Human/Mouse	F	0.1 mg	<b>CL8941TC</b>
CD11b/c (pan macrophage)	Purified	OX-42	Mouse IgG2a	Rat	F, IP, C, P	250 µg	<b>CL042AP</b>
CD11b/c (pan macrophage)	APC	OX-42	Mouse IgG2a	Rat	F	100 µg	<b>CL042APC</b>
CD11b/c (pan macrophage)	Biotin	OX-42	Mouse IgG2a	Rat	F, C, P	100 µg	<b>CL042B</b>
CD11b/c (pan macrophage)	FITC	OX-42	Mouse IgG2a	Rat	F	100 µg	<b>CL042F</b>
CD11b/c (pan macrophage)	PE	OX-42	Mouse IgG2a	Rat	F	50 µg	<b>CL042PE</b>

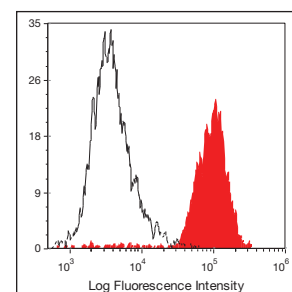
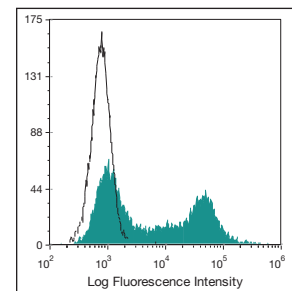
Specificity	Format	Clone	Isotype	Species Reactivity	Applications	Size	Cat. #
CD13	Purified	WM15	Mouse IgG1	Human	F, IP, C, FN	0.1 mg	<b>CLX18AP</b>
CD13	APC	WM15	Mouse IgG1	Human	F, C	100 tests	<b>CLX18APC</b>
CD13	Biotin	WM15	Mouse IgG1	Human	F, C	0.1 mg	<b>CLX18B</b>
CD13	FITC	WM15	Mouse IgG1	Human	F, C	100 tests	<b>CLX18F</b>
CD13	PE	WM15	Mouse IgG1	Human	F, C	100 tests	<b>CLX18PE</b>
CD13	PE-Dyomics 590	WM15	Mouse IgG1	Human	F, C	100 tests	<b>CLX18PE-DY590</b>
CD14	Purified	MEM-18	Mouse IgG1	Human	F, IP, WB, E, FN	0.1 mg	<b>CLX19AP</b>
CD14	APC	MEM-18	Mouse IgG1	Human	F, IP, WB, E, FN	100 tests	<b>CLX19APC</b>
CD14	Biotin	MEM-18	Mouse IgG1	Human	F, IP, WB, E, FN	0.1 mg	<b>CLX19B</b>
CD14	FITC	MEM-18	Mouse IgG1	Human	F, IP, WB, E, FN	100 tests	<b>CLX19F</b>
CD14	Low Endotoxin	MEM-18	Mouse IgG1	Human	FN	0.1 mg	<b>CLX19LE</b>
CD14	PE	MEM-18	Mouse IgG1	Human	F, IP, WB, E, FN	100 tests	<b>CLX19PE</b>
CD16 (Fc gamma RIII)	Purified	LNK16	Mouse IgG1	Human	F, IP	0.1 mg	<b>CLX25AP</b>
CD16 (Fc gamma RIII)	APC	LNK16	Mouse IgG1	Human	F, IP	100 tests	<b>CLX25APC</b>
CD16 (Fc gamma RIII)	Biotin	LNK16	Mouse IgG1	Human	F, IP	0.1 mg	<b>CLX25B</b>
CD16 (Fc gamma RIII)	FITC	LNK16	Mouse IgG1	Human	F, IP	100 tests	<b>CLX25F</b>
CD16 (Fc gamma RIII)	PE	LNK16	Mouse IgG1	Human	F, IP	100 tests	<b>CLX25PE</b>
CD16 (Fc gamma RIII)	PE-Dyomics 647	LNK16	Mouse IgG1	Human	F, IP	100 tests	<b>CLX25PE-DY647</b>
CD18 (B2 Integrin; LFA-1 $\beta$ , CR3b)	Purified	MEM-48	Mouse IgG1	Human	F, IP, WB, P, C, FN	0.1 mg	<b>CLX27AP</b>
CD18 (B2 Integrin; LFA-1 $\beta$ , CR3b)	APC	MEM-48	Mouse IgG1	Human	F, IP, WB, P, C, FN	100 tests	<b>CLX27APC</b>
CD18 (B2 Integrin; LFA-1 $\beta$ , CR3b)	Biotin	MEM-48	Mouse IgG1	Human	F, IP, WB, P, C, FN	0.1 mg	<b>CLX27B</b>
CD18 (B2 Integrin; LFA-1 $\beta$ , CR3b)	FITC	MEM-48	Mouse IgG1	Human	F, IP, WB, P, C, FN	100 tests	<b>CLX27F</b>
CD18 (B2 Integrin; LFA-1 $\beta$ , CR3b)	PE	MEM-48	Mouse IgG1	Human	F, IP, WB, P, C, FN	100 tests	<b>CLX27PE</b>
CD18 (B2 Integrin; LFA-1 $\beta$ , CR3b)	Purified	C71/16	rat IgG2a	Mouse	F, C, P	200 $\mu$ g	<b>CL8917AP</b>
CD18 (B2 Integrin; LFA-1 $\beta$ , CR3b)	FITC	C71/16	rat IgG2a	Mouse	F	0.5 mg	<b>CL8917F</b>
CD18 (B2 Integrin; LFA-1 $\beta$ , CR3b)	PE	C71/16	rat IgG2a	Mouse	F	0.1 mg	<b>CL8917PE</b>
CD23	Purified	B3B4	Rat IgG2a	Mouse	F	200 $\mu$ g	<b>CL8910AP</b>
CD23	Biotin	B3B4	Rat IgG2a	Mouse	F	100 $\mu$ g	<b>CL8910B</b>
CD23	FITC	B3B4	Rat IgG2a	Mouse	F	100 $\mu$ g	<b>CL8910F</b>
CD26	Purified	OX-61	Mouse IgG2a	Rat	F, IP, C, WB	250 $\mu$ g	<b>CL061AP</b>
CD26	Biotin	OX-61	Mouse IgG2a	Rat	F, IP, C, WB	100 $\mu$ g	<b>CL061B</b>
CD26	FITC	OX-61	Mouse IgG2a	Rat	F	100 $\mu$ g	<b>CL061F</b>
CD26	PE	OX-61	Mouse IgG2a	Rat	F	50 $\mu$ g	<b>CL061PE</b>
CD27	Purified	LG.3A10	Armenian Hamster IgG	Mouse/Human	IHC, F, FN (stimulating)	250 $\mu$ g	<b>CL8963AP</b>
CD27	Biotin	LG.3A10	Armenian Hamster IgG	Mouse/Human	IHC, F, FN (stimulating)	100 $\mu$ g	<b>CL8963B</b>
CD27	FITC	LG.3A10	Armenian Hamster IgG	Mouse/Human	IHC, F, FN (stimulating)	100 $\mu$ g	<b>CL8963F</b>
CD27	PE	LG.3A10	Armenian Hamster IgG	Mouse/Human	IHC, F, FN (stimulating)	50 $\mu$ g	<b>CL8963PE</b>
CD28 (Tp-44)	Purified	37.51.1	Hamster IgG	Mouse	F, C, IP	200 $\mu$ g	<b>CL8928AP</b>
CD28 (Tp-44)	Biotin	37.51.1	Hamster IgG	Mouse	F, C	100 $\mu$ g	<b>CL8928B</b>
CD28 (Tp-44)	FITC	37.51.1	Hamster IgG	Mouse	F	100 $\mu$ g	<b>CL8928F</b>
CD28 (Tp-44)	PE	37.51.1	Hamster IgG	Mouse	F	50 $\mu$ g	<b>CL8928PE</b>

Please inquire about additional formats/sizes and azide-free products.



#### Mouse CD11b (CL8941)

C3H/HE mouse peritoneal macrophages (above) and bone marrow (below) stained with anti-CD11b (clone: M1/70.15) (filled histogram) or rat IgG2b isotype control (open histogram).



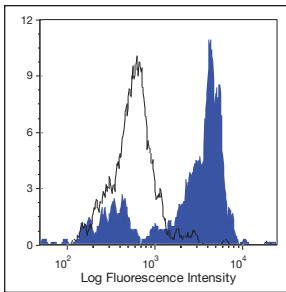
#### Rat CD11b/c (CL042)

Wistar rat peritoneal macrophages stained with anti-CD11b/c (clone: OX-42) (filled histogram) or mouse IgG2a isotype control (open histogram).

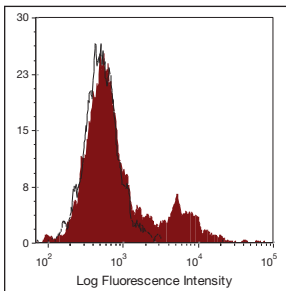


**Legend for Applications:**

<b>AC</b>	=Affinity Chromatography
<b>AGG</b>	=Agglutination
<b>C</b>	=Cryostat Sections
<b>CT</b>	=Cytotoxicity Assay
<b>D</b>	=Depletion
<b>E</b>	=ELISA
<b>EC</b>	=ELISA (Capture)
<b>ED</b>	=ELISA (Detection)
<b>F</b>	=Flow Cytometry
<b>FN</b>	=Functional Assay
<b>IC</b>	=Immunocytochemistry
<b>ID</b>	=Immunodiffusion
<b>IF</b>	=Immunofluorescence
<b>IP</b>	=Immunoprecipitation
<b>IV</b>	=In vivo Assay
<b>N</b>	=Neutralization
<b>P</b>	=Paraffin-Embedded Sections
<b>R</b>	=RIA
<b>WB</b>	=Western Blotting

**Human CD33 (CL7627)**

Human peripheral blood monocytes stained with anti-CD33 (clone: CD33 1C7/1) (filled histogram) or mouse IgG1 isotype control (open histogram).

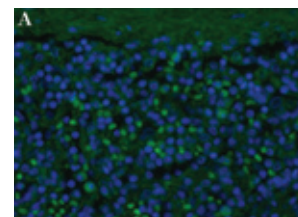
**Human CD35 (CL7614)**

Human peripheral blood lymphocytes stained with anti-CD35 (clone: To5) (filled histogram) or mouse IgG1 isotype control (open histogram).

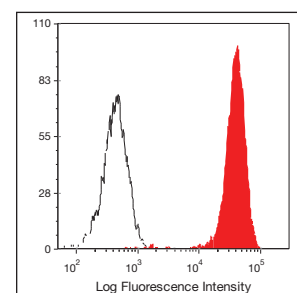
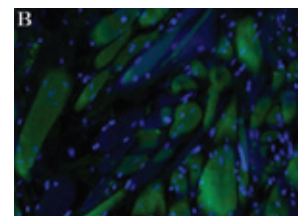
Specificity	Format	Clone	Isotype	Species Reactivity	Applications	Size	Cat. #
CD28 (Tp-44)	Purified	JJ319	Mouse IgG1	Rat	F, IP	250 µg	<b>CL028AP</b>
CD28 (Tp-44)	Biotin	JJ319	Mouse IgG1	Rat	F	100 µg	<b>CL028B</b>
CD28 (Tp-44)	FITC	JJ319	Mouse IgG1	Rat	F	100 µg	<b>CL028F</b>
CD29	Purified	MEM-101A	Mouse IgG1	Human	F, IP, WB	0.1 mg	<b>CLX38AP</b>
CD29	APC	MEM-101A	Mouse IgG1	Human	F, IP, WB	100 tests	<b>CLX38APC</b>
CD29	Biotin	MEM-101A	Mouse IgG1	Human	F, IP, WB	0.1 mg	<b>CLX38B</b>
CD29	FITC	MEM-101A	Mouse IgG1	Human	F, IP, WB	100 tests	<b>CLX38F</b>
CD29	PE	MEM-101A	Mouse IgG1	Human	F, IP, WB	100 tests	<b>CLX38PE</b>
CD30	Purified	MEM-268	Mouse IgG	Human	F, P	0.1 mg	<b>CLX242AP</b>
CD30	APC	MEM-268	Mouse IgG	Human	F, P	100 tests	<b>CLX242APC</b>
CD30	FITC	MEM-268	Mouse IgG	Human	F, P	100 tests	<b>CLX242F</b>
CD30	PE	MEM-268	Mouse IgG	Human	F, P	100 tests	<b>CLX242PE</b>
CD31 (PECAM-1)	Purified	MEM-05	Mouse IgG1	Human	F, WB	0.1 mg	<b>CLX39AP</b>
CD31 (PECAM-1)	APC	MEM-05	Mouse IgG1	Human	F, WB	100 tests	<b>CLX39APC</b>
CD31 (PECAM-1)	Biotin	MEM-05	Mouse IgG1	Human	F, WB	0.1 mg	<b>CLX39B</b>
CD31 (PECAM-1)	FITC	MEM-05	Mouse IgG1	Human	F, WB	100 tests	<b>CLX39F</b>
CD31 (PECAM-1)	PE	MEM-05	Mouse IgG1	Human	F, WB	100 tests	<b>CLX39PE</b>
CD31 (PECAM-1)	Purified	390	Rat IgG2a	Mouse	F, C, IP, FN	200 µg	<b>CL8930AP</b>
CD31 (PECAM-1)	FITC	390	Rat IgG2a	Mouse	F	100 µg	<b>CL8930F</b>
CD31 (PECAM-1)	PE	390	Rat IgG2a	Mouse	F	50 µg	<b>CL8930PE</b>
CD32/16	Purified	KT1632	Rat IgG2a	Mouse	F	100 µg	<b>CL9405AP</b>
CD32/16	Biotin	KT1632	Rat IgG2a	Mouse	F	100 µg	<b>CL9405B</b>
CD32/16	FITC	KT1632	Rat IgG2a	Mouse	F	100 µg	<b>CL9405F</b>
CD33	Purified	CD33 1C7/1	Mouse IgG1	Human	WB, F, E, IP	200 µg	<b>CL7627AP</b>
CD33	Biotin	CD33 1C7/1	Mouse IgG1	Human	WB, F, E, IP	100 µg	<b>CL7627B</b>
CD33	FITC	CD33 1C7/1	Mouse IgG1	Human	WB, F	100 µg	<b>CL7627F</b>
CD33	PE	CD33 1C7/1	Mouse IgG1	Human	WB, F	50 µg	<b>CL7627PE</b>
CD35	Purified	To5	Mouse IgG1	Human	WB, F, C, P	200 µg	<b>CL7614AP</b>
CD35	APC	To5	Mouse IgG1	Human	F	100 µg	<b>CL7614APC</b>
CD35	Biotin	To5	Mouse IgG1	Human	WB, F, C, P	100 µg	<b>CL7614B</b>
CD35	FITC	To5	Mouse IgG1	Human	F	100 µg	<b>CL7614F</b>
CD35	PE	To5	Mouse IgG1	Human	F	50 µg	<b>CL7614PE</b>
CD36	Purified	TR9	Mouse IgG1	Human	F	0.1 mg	<b>CLX238AP</b>
CD36	APC	TR9	Mouse IgG1	Human	F	100 tests	<b>CLX238APC</b>
CD36	FITC	TR9	Mouse IgG1	Human	F	100 tests	<b>CLX238F</b>
CD36	PE	TR9	Mouse IgG1	Human	F	100 tests	<b>CLX238PE</b>
CD36	PE-Dyomics 647	TR9	Mouse IgG1	Human	F	100 tests	<b>CLX238PE-DY647</b>
CD40 (gp39 receptor)	FITC	HI40a	Mouse IgG1	Human	F	100 tests	<b>CLX216F</b>
CD40 (gp39 receptor)	PE	HI40a	Mouse IgG1	Human	F	100 tests	<b>CLX216PE</b>
CD40 (gp39 receptor)	Purified	3/23	Rat IgG2a	Mouse	F, C	200 µg	<b>CL8939AP</b>
CD40 (gp39 receptor)	Biotin	3/23	Rat IgG2a	Mouse	F, C	100 µg	<b>CL8939B</b>
CD40 (gp39 receptor)	PE	3/23	Rat IgG2a	Mouse	F	50 µg	<b>CL8939PE</b>
CD43 (Leukosialin)	Purified	MEM-59	Mouse IgG1	Human	F, IP, WB, P, FN	0.1 mg	<b>CLX45AP</b>
CD43 (Leukosialin)	Biotin	MEM-59	Mouse IgG1	Human	F, IP, WB, P, FN	0.1 mg	<b>CLX45B</b>
CD43 (Leukosialin)	FITC	MEM-59	Mouse IgG1	Human	F, IP, WB, P, FN	100 tests	<b>CLX45F</b>
CD43 (Leukosialin)	PE	MEM-59	Mouse IgG1	Human	F, IP, WB, P, FN	100 tests	<b>CLX45PE</b>

Specificity	Format	Clone	Isotype	Species Reactivity	Applications	Size	Cat. #
CD43 (Leukosialin)	Purified	W3/13HLK	Mouse IgG1	Rat	F, C	250 µg	<b>CL002AP</b>
CD43 (Leukosialin)	Biotin	W3/13HLK	Mouse IgG1	Rat	F, C	100 µg	<b>CL002B</b>
CD43 (Leukosialin)	FITC	W3/13HLK	Mouse IgG1	Rat	F	100 µg	<b>CL002F</b>
CD43 (Leukosialin)	PE	W3/13HLK	Mouse IgG1	Rat	F	50 µg	<b>CL002PE</b>
CD45 (T200)	Purified	YAML 501.4	Rat IgG2a	Human	F, WB	200 µg	<b>CL7605AP</b>
CD45 (T200)	APC	YAML 501.4	Rat IgG2a	Human	F, WB	100 µg	<b>CL7605APC</b>
CD45 (T200)	Biotin	YAML 501.4	Rat IgG2a	Human	F, WB	100 µg	<b>CL7605B</b>
CD45 (T200)	FITC	YAML 501.4	Rat IgG2a	Human	F, WB	100 µg	<b>CL7605F</b>
CD45 (T200)	PE	YAML 501.4	Rat IgG2a	Human	F, WB	50 µg	<b>CL7605PE</b>
CD45RA	Purified	MEM-56	Mouse IgG2b	Human	F, IP, WB, P	0.1 mg	<b>CLX49AP</b>
CD45RA	APC	MEM-56	Mouse IgG2b	Human	F, IP, WB, P	100 tests	<b>CLX49APC</b>
CD45RA	Biotin	MEM-56	Mouse IgG2b	Human	F, IP, WB, P	0.1 mg	<b>CLX49B</b>
CD45RA	FITC	MEM-56	Mouse IgG2b	Human	F, IP, WB, P	100 tests	<b>CLX49F</b>
CD45RA	PerCP	MEM-56	Mouse IgG2b	Human	F, IP, WB, P	100 tests	<b>CLX49PCP</b>
CD45RA	PE	MEM-56	Mouse IgG2b	Human	F, IP, WB, P	100 tests	<b>CLX49PE</b>
CD45RB	Purified	MEM-55	Mouse IgG1	Human	F, IP, WB, P	0.1 mg	<b>CLX50AP</b>
CD45RB	APC	MEM-55	Mouse IgG1	Human	F, IP, WB, P	100 tests	<b>CLX50APC</b>
CD45RB	FITC	MEM-55	Mouse IgG1	Human	F, IP, WB, P	100 tests	<b>CLX50F</b>
CD45RB	PE	MEM-55	Mouse IgG1	Human	F, IP, WB, P	100 tests	<b>CLX50PE</b>
CD45RB	Purified	16A	Rat IgG2a	Mouse	F, C, IP, P	250 µg	<b>CL8947AP</b>
CD45RB	Biotin	16A	Rat IgG2a	Mouse	F, C, P	100 µg	<b>CL8947B</b>
CD45RB	FITC	16A	Rat IgG2a	Mouse	F	100 µg	<b>CL8947F</b>
CD45RB	PE	16A	Rat IgG2a	Mouse	F	50 µg	<b>CL8947PE</b>
CD45RB	PE-Cy5	16A	Rat IgG2a	Mouse	F	100 µg	<b>CL8947TC</b>
CD47 (IAP)	Purified	MEM-122	Mouse IgM	Human	F, WB, C	0.1 mg	<b>CLX53AP</b>
CD47 (IAP)	FITC	MEM-122	Mouse IgM	Human	F, WB, C	100 tests	<b>CLX53F</b>
CD48 (Blast-1)	Purified	MEM-102	Mouse IgG1	Human	F, IP, WB, P	0.1 mg	<b>CLX54AP</b>
CD48 (Blast-1)	APC	MEM-102	Mouse IgG1	Human	F, IP, WB, P	100 tests	<b>CLX54APC</b>
CD48 (Blast-1)	Biotin	MEM-102	Mouse IgG1	Human	F, IP, WB, P	0.1 mg	<b>CLX54B</b>
CD48 (Blast-1)	FITC	MEM-102	Mouse IgG1	Human	F, IP, WB, P	100 tests	<b>CLX54F</b>
CD48 (Blast-1)	PE	MEM-102	Mouse IgG1	Human	F, IP, WB, P	100 tests	<b>CLX54PE</b>
CD48 (Blast-1)	Purified	OX-45	Mouse IgG1	Rat	F	250 µg	<b>CL045AP</b>
CD48 (Blast-1)	Biotin	OX-45	Mouse IgG1	Rat	F	100 µg	<b>CL045B</b>
CD48 (Blast-1)	FITC	OX-45	Mouse IgG1	Rat	F	100 µg	<b>CL045F</b>
CD48 (Blast-1)	PE	OX-45	Mouse IgG1	Rat	F	50 µg	<b>CL045PE</b>
CD49d (LPAM-2)	Purified	R1-2	Rat IgG2b	Mouse	F, C, IP, FN	250 µg	<b>CL8919AP</b>
CD49d (LPAM-2)	Biotin	R1-2	Rat IgG2b	Mouse	F, C	100 µg	<b>CL8919B</b>
CD49d (LPAM-2)	FITC	R1-2	Rat IgG2b	Mouse	F	100 µg	<b>CL8919F</b>
CD49d (LPAM-2)	PE	R1-2	Rat IgG2b	Mouse	F	50 µg	<b>CL8919PE</b>
CD50 (ICAM-3)	Purified	MEM-171	Mouse IgG1	Human	F, IP	0.1 mg	<b>CLX55AP</b>
CD50 (ICAM-3)	Biotin	MEM-171	Mouse IgG1	Human	F, IP	0.1 mg	<b>CLX55B</b>
CD50 (ICAM-3)	PE	MEM-171	Mouse IgG1	Human	F, IP	100 tests	<b>CLX55PE</b>
CD52 (Campath-1)	Purified	HI186	Mouse IgG2b	Human	F, P	0.1 mg	<b>CLX56AP</b>
CD52 (Campath-1)	APC	HI186	Mouse IgG2b	Human	F, P	100 tests	<b>CLX56APC</b>
CD52 (Campath-1)	FITC	HI186	Mouse IgG2b	Human	F, P	100 tests	<b>CLX56F</b>
CD52 (Campath-1)	PE	HI186	Mouse IgG2b	Human	F, P	100 tests	<b>CLX56PE</b>

Please inquire about additional formats/sizes and azide-free products.



**Purified Anti-Human CD35 (CL7614AP)**  
Staining of paraformaldehyde-fixed paraffin-embedded human spleen (A) and human tonsil (B) sections at 400x magnification with DAPI counterstain. Mouse anti-human CD35 mAb (CL7614AP) 1:500; Alexa Fluor 488 Goat anti-mouse 1:500 (Molecular Probes) and Normal Goat Serum (blocking).

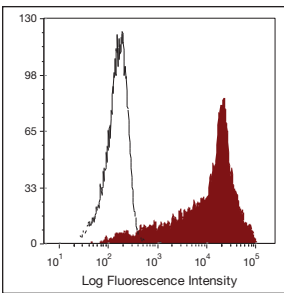


**Human CD45 (T200) (CL7605)**

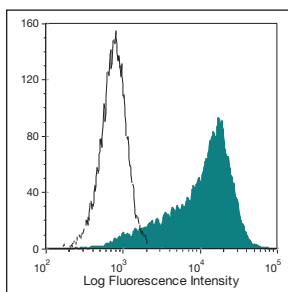
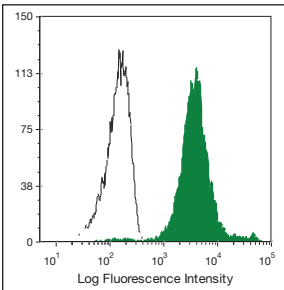
Human peripheral blood lymphocytes stained with anti-CD45 (T200) (clone: YAML 501.4) (filled histogram) or rat IgG2a isotype control (open histogram).

**Legend for Applications:**

<b>AC</b>	=Affinity Chromatography
<b>AGG</b>	=Agglutination
<b>C</b>	=Cryostat Sections
<b>CT</b>	=Cytotoxicity Assay
<b>D</b>	=Depletion
<b>E</b>	=ELISA
<b>EC</b>	=ELISA (Capture)
<b>ED</b>	=ELISA (Detection)
<b>F</b>	=Flow Cytometry
<b>FN</b>	=Functional Assay
<b>IC</b>	=Immunocytochemistry
<b>ID</b>	=Immunodiffusion
<b>IF</b>	=Immunofluorescence
<b>IP</b>	=Immunoprecipitation
<b>IV</b>	=In vivo Assay
<b>N</b>	=Neutralization
<b>P</b>	=Paraffin-Embedded Sections
<b>R</b>	=RIA
<b>WB</b>	=Western Blotting

**Mouse CD45RB (CL8947)**

Balb/c mouse splenocytes (above) and thymocytes (below) were stained with anti-CD45RB (clone: 16A) (filled histogram) or rat IgG2a isotype control (open histogram).

**Mouse CD62L (CL8918)**

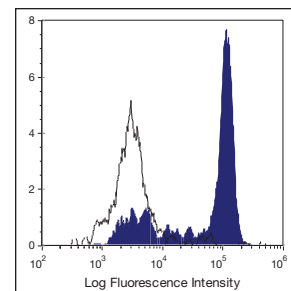
Balb/c mouse thymocytes stained with anti-CD62L (clone: MEL-14) (filled histogram) or rat IgG2a isotype control (open histogram).

Specificity	Format	Clone	Isotype	Species Reactivity	Applications	Size	Cat. #
CD53	Purified	MEM-53	Mouse IgG1	Human	F, IP, WB, F, FN	0.1 mg	<b>CLX57AP</b>
CD53	APC	MEM-53	Mouse IgG1	Human	F, IP, WB, F, FN	100 tests	<b>CLX57APC</b>
CD53	FITC	MEM-53	Mouse IgG1	Human	F, IP, WB, F, FN	100 tests	<b>CLX57F</b>
CD53	PE	MEM-53	Mouse IgG1	Human	F, IP, WB, F, FN	100 tests	<b>CLX57PE</b>
CD56 (N-CAM)	Purified	MEM-188	Mouse IgG2a	Human	F, IP, P	0.1 mg	<b>CLX61AP</b>
CD56 (N-CAM)	APC	MEM-188	Mouse IgG2a	Human	F, IP, P	100 tests	<b>CLX61APC</b>
CD56 (N-CAM)	Biotin	MEM-188	Mouse IgG2a	Human	F, IP, P	0.1 mg	<b>CLX61B</b>
CD56 (N-CAM)	FITC	MEM-188	Mouse IgG2a	Human	F, IP, P	100 tests	<b>CLX61F</b>
CD56 (N-CAM)	PerCP	MEM-188	Mouse IgG2a	Human	F, IP, P	100 tests	<b>CLX61PCP</b>
CD56 (N-CAM)	PE	MEM-188	Mouse IgG2a	Human	F, IP, P	100 tests	<b>CLX61PE</b>
CD56 (N-CAM)	Purified	H28-123-16	Rat IgG2a	Mouse	C, IF, IP, WB, F	200 µg	<b>CL10008AP</b>
CD58 (LFA-3)	Biotin	MEM-63	Mouse IgG1	Human	F, IP, WB, FN	0.1 mg	<b>CLX62B</b>
CD58 (LFA-3)	FITC	MEM-63	Mouse IgG1	Human	F, IP, WB, FN	100 tests	<b>CLX62F</b>
CD58 (LFA-3)	PE	MEM-63	Mouse IgG1	Human	F, IP, WB, FN	100 tests	<b>CLX62PE</b>
CD61	Purified	HMb3-1	Armenian Hamster IgG	Mouse	F	200 µg	<b>CL8961AP</b>
CD62L (L-selectin)	Purified	LT-TD180	Mouse IgG1	Human	F	0.1 mg	<b>CLX236AP</b>
CD62L (L-selectin)	APC	LT-TD180	Mouse IgG1	Human	F	100 tests	<b>CLX236APC</b>
CD62L (L-selectin)	FITC	LT-TD180	Mouse IgG1	Human	F	100 tests	<b>CLX236F</b>
CD62L (L-selectin)	PE	LT-TD180	Mouse IgG1	Human	F	100 tests	<b>CLX236PE</b>
CD62L (L-selectin)	Purified	OX-85	Mouse IgG1	Rat	F, E	250 µg	<b>CL085AP</b>
CD62L (L-selectin)	Biotin	OX-85	Mouse IgG1	Rat	F	100 µg	<b>CL085B</b>
CD62L (L-selectin)	FITC	OX-85	Mouse IgG1	Rat	F	100 µg	<b>CL085F</b>
CD62L (L-selectin)	PE	OX-85	Mouse IgG1	Rat	F	50 µg	<b>CL085PE</b>
CD62L (L-selectin)	Purified	MEL-14	Rat IgG2a	Mouse	F, C, IP, FN	250 µg	<b>CL8918AP</b>
CD62L (L-selectin)	Biotin	MEL-14	Rat IgG2a	Mouse	F, C, E	100 µg	<b>CL8918B</b>
CD62L (L-selectin)	FITC	MEL-14	Rat IgG2a	Mouse	F	100 µg	<b>CL8918F</b>
CD62L (L-selectin)	PE	MEL-14	Rat IgG2a	Mouse	F	50 µg	<b>CL8918PE</b>
CD63	Purified	MEM-259	Mouse IgG1	Human	F, IP, WB, P, IC	0.1 mg	<b>CLX66AP</b>
CD63	APC	MEM-259	Mouse IgG1	Human	F, IP, WB, P, IC	100 tests	<b>CLX66APC</b>
CD63	Biotin	MEM-259	Mouse IgG1	Human	F, IP, WB, P, IC	0.1 mg	<b>CLX66B</b>
CD63	FITC	MEM-259	Mouse IgG1	Human	F, IP, WB, P, IC	100 tests	<b>CLX66F</b>
CD63	PerCP	MEM-259	Mouse IgG1	Human	F, IP, WB, P, IC	100 tests	<b>CLX66PCP</b>
CD63	PE	MEM-259	Mouse IgG1	Human	F, IP, WB, P, IC	100 tests	<b>CLX66PE</b>
CD64 (FcγRI)	Purified	10.1	Mouse IgG1	Human	F, IP, WB, P, C, IC, FN	0.1 mg	<b>CLX443AP</b>
CD69 (VEA, Early activation marker)	Purified	H1.2F3	Armenian Hamster IgG	Mouse	F, IP	0.5 mg	<b>CL8969AP</b>
CD69 (VEA, Early activation marker)	Biotin	H1.2F3	Armenian Hamster IgG	Mouse	F	100 µg	<b>CL8969B</b>
CD69 (VEA, Early activation marker)	FITC	H1.2F3	Armenian Hamster IgG	Mouse	F	0.5 mg	<b>CL8969F</b>
CD69 (VEA, Early activation marker)	PE	H1.2F3	Armenian Hamster IgG	Mouse	F	50 µg	<b>CL8969PE</b>
CD72	Purified	3F3	Mouse IgG2b	Human	F, IP	0.1 mg	<b>CLX69AP</b>
CD72	Biotin	3F3	Mouse IgG2b	Human	F, IP	0.1 mg	<b>CLX69B</b>
CD72	PE	3F3	Mouse IgG2b	Human	F, IP	100 tests	<b>CLX69PE</b>



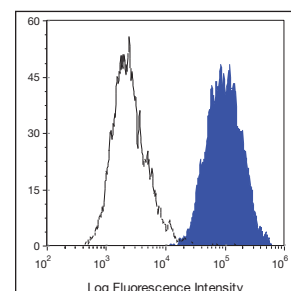
Specificity	Format	Clone	Isotype	Species Reactivity	Applications	Size	Cat. #
CD80 (B7-1)	Purified	MEM-233	Mouse IgG1	Human	F, IP	0.1 mg	<b>CLX259AP</b>
CD80 (B7-1)	APC	MEM-233	Mouse IgG1	Human	F	100 tests	<b>CLX259APC</b>
CD80 (B7-1)	FITC	MEM-233	Mouse IgG1	Human	F	100 tests	<b>CLX259F</b>
CD80 (B7-1)	PE	MEM-233	Mouse IgG1	Human	F	100 tests	<b>CLX259PE</b>
CD80 (B7-1)	Purified	3H5	Mouse IgG1	Rat	F	200 µg	<b>CL080AP</b>
CD80 (B7-1)	Biotin	3H5	Mouse IgG1	Rat	F	100 µg	<b>CL080B</b>
CD80 (B7-1)	PE	3H5	Mouse IgG1	Rat	F	50 µg	<b>CL080PE</b>
CD80 (B7-1)	Purified	RMMP-1	Rat IgG2a	Mouse	F	200 µg	<b>CL8980AP</b>
CD80 (B7-1)	PE	RMMP-1	Rat IgG2a	Mouse	F	50 µg	<b>CL8980PE</b>
CD86 (B7-2)	Purified	24F	Mouse IgG1	Rat	F	200 µg	<b>CL086AP</b>
CD86 (B7-2)	Biotin	24F	Mouse IgG1	Rat	F	100 µg	<b>CL086B</b>
CD86 (B7-2)	FITC	24F	Mouse IgG1	Rat	F	100 µg	<b>CL086F</b>
CD86 (B7-2)	PE	24F	Mouse IgG1	Rat	F	50 µg	<b>CL086PE</b>
CD86 (B7-2, B70)	Purified	RMMP-2	Rat IgG2a	Mouse	F	200 µg	<b>CL8986AP</b>
CD86 (B7-2, B70)	PE	RMMP-2	Rat IgG2a	Mouse	F	50 µg	<b>CL8986PE</b>
CD88 (C5a receptor)	Purified	20/70	Rat IgG2b	Mouse	F, IF, Blocking	250 µg	<b>CL7588AP</b>
CD88 (C5a receptor)	Biotin	20/70	Rat IgG2b	Mouse	F, IF, Blocking	100 µg	<b>CL7588B</b>
CD88 (C5a receptor)	FITC	20/70	Rat IgG2b	Mouse	F, IF	100 µg	<b>CL7588F</b>
CD88 (C5a receptor)	Low Endotoxin	20/70	Rat IgG2b	Mouse	Blocking	500 µg	<b>CL7588LE</b>
CD88 (C5a receptor)	PE	20/70	Rat IgG2b	Mouse	F, IF, Blocking	50 µg	<b>CL7588PE</b>
CD95	Purified	LT95	Mouse IgG1	Human	F, P	0.1 mg	<b>CLX107AP</b>
CD95	APC	LT95	Mouse IgG1	Human	F	100 tests	<b>CLX107APC</b>
CD95	FITC	LT95	Mouse IgG1	Human	F, P	100 tests	<b>CLX107F</b>
CD95	PE	LT95	Mouse IgG1	Human	F	100 tests	<b>CLX107PE</b>
CD105 (Endoglin)	Purified	MJ7/18	Rat IgG2a,k	Mouse	WB, IP, IHC, F	250 µg	<b>CL8983AP</b>
CD105 (Endoglin)	Biotin	MJ7/18	Rat IgG2a,k	Mouse	WB, IP, IHC, F	100 µg	<b>CL8983B</b>
CD105 (Endoglin)	FITC	MJ7/18	Rat IgG2a,k	Mouse	WB, IP, IHC, F	100 µg	<b>CL8983F</b>
CD105 (Endoglin)	PE	MJ7/18	Rat IgG2a,k	Mouse	WB, IP, IHC, F	50 µg	<b>CL8983PE</b>
CD105 (Endoglin)	Purified	MEM-229	Mouse IgG2a	Human	F, WB	0.1 mg	<b>CLX240AP</b>
CD105 (Endoglin)	FITC	MEM-229	Mouse IgG2a	Human	F, WB	100 tests	<b>CLX240F</b>
CD105 (Endoglin)	PE	MEM-229	Mouse IgG2a	Human	F, WB	100 tests	<b>CLX240PE</b>
CD106 (VCAM-1)	Purified	MK2	Rat IgG1	Mouse	F, C	200 µg	<b>CL8955AP</b>
CD106 (VCAM-1)	Biotin	MK2	Rat IgG1	Mouse	F, C	100 µg	<b>CL8955B</b>
CD122 (IL-2R B)	Purified	TM-B1	Rat IgG2b	Mouse	F, IP, N	200 µg	<b>CL8951AP</b>
CD122 (IL-2R B)	Biotin	TM-B1	Rat IgG2b	Mouse	F, IP	100 µg	<b>CL8951B</b>
CD147	Purified	OX114	Rat IgG1	Mouse	F, WB, IHC	250 µg	<b>CL8975AP</b>
CD147	Biotin	OX114	Rat IgG1	Mouse	F	100 µg	<b>CL8975B</b>
CD147	FITC	OX114	Rat IgG1	Mouse	F	100 µg	<b>CL8975F</b>
CD147	PE	OX114	Rat IgG1	Mouse	F	50 µg	<b>CL8975PE</b>
CD147	Purified	MEM-M6/1	Mouse IgG1	Human	F, IP, WB, P	0.1 mg	<b>CLX76AP</b>
CD147	APC	MEM-M6/1	Mouse IgG1	Human	F, IP, WB, P	100 tests	<b>CLX76APC</b>
CD147	Biotin	MEM-M6/1	Mouse IgG1	Human	F, IP, WB, P	0.1 mg	<b>CLX76B</b>
CD147	FITC	MEM-M6/1	Mouse IgG1	Human	F, IP, WB, P	100 tests	<b>CLX76F</b>
CD147	PE	MEM-M6/1	Mouse IgG1	Human	F, IP, WB, P	100 tests	<b>CLX76PE</b>

Please inquire about additional formats/sizes and azide-free products.



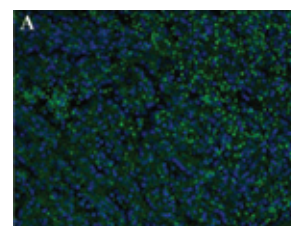
#### Mouse CD88 (C5a Receptor) (CL7588)

Balb/c peritoneal macrophages stained with anti-C5a receptor (CD88) (clone: 20/70) (filled histogram) or rat IgG2b isotype control (open histogram).



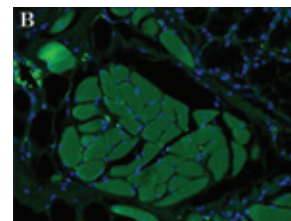
#### Mouse CD105 (CL8983)

HSV mouse endothelial cells stained with anti-CD105 (clone: MJ7/18) (filled histogram) or rat IgG2a isotype control (open histogram).



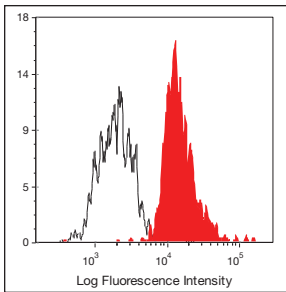
#### Purified Anti-Human CD163 (CL7617AP)

Staining of paraformaldehyde-fixed paraffin-embedded human spleen sections at 400x magnification (A) and human tonsil sections at 400x (B) magnification with DAPI counterstain. Mouse anti-human CD163 mAb (CL7617AP) 1:500; Alexa Fluor 488 Goat anti-mouse 1:500 (Molecular Probes) and Normal Goat Serum (blocking).

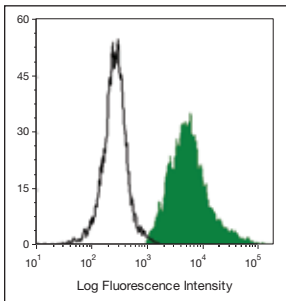


**Legend for Applications:**

<b>AC</b>	=Affinity Chromatography
<b>AGG</b>	= Agglutination
<b>C</b>	=Cryostat Sections
<b>CT</b>	=Cytotoxicity Assay
<b>D</b>	=Depletion
<b>E</b>	=ELISA
<b>EC</b>	=ELISA (Capture)
<b>ED</b>	=ELISA (Detection)
<b>F</b>	=Flow Cytometry
<b>FN</b>	=Functional Assay
<b>IC</b>	=Immunocytochemistry
<b>ID</b>	=Immunodiffusion
<b>IF</b>	=Immunofluorescence
<b>IP</b>	=Immunoprecipitation
<b>IV</b>	=In vivo Assay
<b>N</b>	=Neutralization
<b>P</b>	=Paraffin-Embedded Sections
<b>R</b>	=RIA
<b>WB</b>	=Western Blotting

**Rat CD172a (SIRP) (CL041)**

Fischer rat peritoneal macrophages were stained with anti-CD172a (SIRP) (clone: OX-41) (filled histogram) or mouse IgG2a isotype control (open histogram).

**Mouse CD200R (CL8996)**

Thioglycollate-elicited Balb/c mouse peritoneal macrophages stained with anti-CD200R (clone: OX110) (filled histogram) or rat IgG1 isotype control (open histogram).

Specificity	Format	Clone	Isotype	Species Reactivity	Applications	Size	Cat. #
CD153 (CD30L)	Purified	RM153	Rat IgG2b	Mouse	F, FN	200 µg	<b>CL8953AP</b>
CD153 (CD30L)	Biotin	RM153	Rat IgG2b	Mouse	F	100 µg	<b>CL8953B</b>
CD153 (CD30L)	PE	RM153	Rat IgG2b	Mouse	F	50 µg	<b>CL8953PE</b>
CD163	Purified	GHI/61	Mouse IgG1,k	Human	WB, IP, C, F	200 µg	<b>CL7617AP</b>
CD163	APC	GHI/61	Mouse IgG1,k	Human	F	100 µg	<b>CL7617APC</b>
CD163	Biotin	GHI/61	Mouse IgG1,k	Human	WB, IP, C, F	100 µg	<b>CL7617B</b>
CD163	FITC	GHI/61	Mouse IgG1,k	Human	F	100 µg	<b>CL7617F</b>
CD163	PE	GHI/61	Mouse IgG1,k	Human	F	50 µg	<b>CL7617PE</b>
CD172a (SIRP)	Purified	OX-41	Mouse IgG2a	Rat	F, WB, C, E, IP, IF	250 µg	<b>CL041AP</b>
CD172a (SIRP)	Biotin	OX-41	Mouse IgG2a	Rat	F, WB, C, E, IP, IF	100 µg	<b>CL041B</b>
CD172a (SIRP)	FITC	OX-41	Mouse IgG2a	Rat	F	100 µg	<b>CL041F</b>
CD172a (SIRP)	PE	OX-41	Mouse IgG2a	Rat	F	50 µg	<b>CL041PE</b>
CD180 (RP105)	Purified	G28.8	Mouse IgG1	Human	F	200 µg	<b>CL7630AP</b>
CD180 (RP105)	PE	G28.8	Mouse IgG1	Human	F	50 µg	<b>CL7630PE</b>
CD200	Purified	OX90	Rat IgG2a	Mouse	F, IHC, E	250 µg	<b>CL8995AP</b>
CD200	Biotin	OX90	Rat IgG2a	Mouse	F, IHC, E	100 µg	<b>CL8995B</b>
CD200	FITC	OX90	Rat IgG2a	Mouse	F, IHC	100 µg	<b>CL8995F</b>
CD200	PE	OX90	Rat IgG2a	Mouse	F	50 µg	<b>CL8995PE</b>
CD200 (OX-2)	Purified	OX-2	Mouse IgG1	Rat	F, AC, IF	250 µg	<b>CL082AP</b>
CD200 (OX-2)	Biotin	OX-2	Mouse IgG1	Rat	F	100 µg	<b>CL082B</b>
CD200 (OX-2)	FITC	OX-2	Mouse IgG1	Rat	F	100 µg	<b>CL082F</b>
CD200 (OX-2)	PE	OX-2	Mouse IgG1	Rat	F	50 µg	<b>CL082PE</b>
CD200R	Purified	OX110	Rat IgG1	Mouse	F	250 µg	<b>CL8996AP</b>
CD200R	Biotin	OX110	Rat IgG1	Mouse	F	100 µg	<b>CL8996B</b>
CD200R	FITC	OX110	Rat IgG1	Mouse	F	100 µg	<b>CL8996F</b>
CD200R	PE	OX110	Rat IgG1	Mouse	F	50 µg	<b>CL8996PE</b>
CD205 (DEC-205)	Purified	NLDC-145	Rat IgG2a	Mouse	F, C, P	100T	<b>CL89145</b>
CD205 (DEC-205)	Biotin	NLDC-145	Rat IgG2a	Mouse	F, C, P	100 µg	<b>CL89145B</b>
CD205 (DEC-205)	FITC	NLDC-145	Rat IgG2a	Mouse	F	100 µg	<b>CL89145F</b>
CD205 (DEC-205)	PE	NLDC-145	Rat IgG2a	Mouse	F	50 µg	<b>CL89145PE</b>
CD226	Purified	15F.10E5	Rat IgMk	Mouse	F	250 µg	<b>CL8998AP</b>
CD226	FITC	15F.10E5	Rat IgMk	Mouse	F	100 µg	<b>CL8998F</b>
CD282 (TLR2)	Purified	IIG7	Mouse IgG1	Human	F, IP, E	200 µg	<b>CL7622AP</b>
CD282 (TLR2)	Biotin	IIG7	Mouse IgG1	Human	F	100 µg	<b>CL7622B</b>
CD282 (TLR2)	FITC	IIG7	Mouse IgG1	Human	F	100 µg	<b>CL7622F</b>
CD282 (TLR2)	PE	IIG7	Mouse IgG1	Human	F	50 µg	<b>CL7622PE</b>

**CEDARLANE®** continually endeavors to expand our line of antibodies. Please let us know if there is a specific antibody or clone that interests you. Please also inquire for special formats and sizes.

# ELISA Kits

Specificity	Species Reactivity	Size	Cat. #
CCL3/MIP-1alpha	Human	48T	<b>CL76154K-48</b>
	Human	96T	<b>CL76154K-96</b>
CD54/ sICAM-1	Human	48T	<b>CL76141K-48</b>
	Human	96T	<b>CL76141K-96</b>
EGF	Human	48T	<b>CL76148K-48</b>
	Human	96T	<b>CL76148K-96</b>
GM-CSF	Human	48T	<b>CL76146K-48</b>
	Human	96T	<b>CL76146K-96</b>
TGF- $\beta$ 1	Rat	48T	<b>CL00118K-48</b>
	Rat	96T	<b>CL00118K-96</b>
	Human	48T	<b>CL76144K-48</b>
	Human	96T	<b>CL76144K-96</b>
	Mouse	48T	<b>CL89123K-48</b>
	Mouse	96T	<b>CL89123K-96</b>

## Contact CEDARLANE®

### In CANADA:

4410 Paletta Court, Burlington, ON L7L 5R2

Toll Free: 1-800-268-5058

Ph: 289-288-0001 | Fax: 289-288-0020

E-mail: [general@cedarlanelabs.com](mailto:general@cedarlanelabs.com)

### In the USA:

1210 Turrentine Street, Burlington, NC 27215

Toll Free: 1-800-721-1644

Ph: 336-513-5135 | Fax: 336-513-5138

E-mail: [service@cedarlanelabs.com](mailto:service@cedarlanelabs.com)

### Outside of North America:

Please visit our website ([www.cedarlanelabs.com](http://www.cedarlanelabs.com)) for a list of international distributors and contact information.

**CEDARLANE®** is an ISO 9001 and ISO 13485 registered company

official distributor

SZABO-SCANDIC  
Handels GmbH & Co KG  
Quellenstraße 110, A-1100 Wien  
T. +43(0)1 489 3961-0  
F. +43(0)1 489 3961-7  
mail@szabo-scandic.com  
www.szabo-scandic.com



SZABO  
SCANDIC

For more information, contact:

**CEDARLANE**<sup>®</sup>   
[www.cedarlanelabs.com/Reagents](http://www.cedarlanelabs.com/Reagents)

official distributor

SZABO-SCANDIC Handels GmbH  
Quellenstraße 110, A-1100 Wien  
T. +43(0)1 489 3961-0  
F. +43(0)1 489 3961-7  
mail@szabo-scandic.com  
www.szabo-scandic.com



SZABO  
SCANDIC