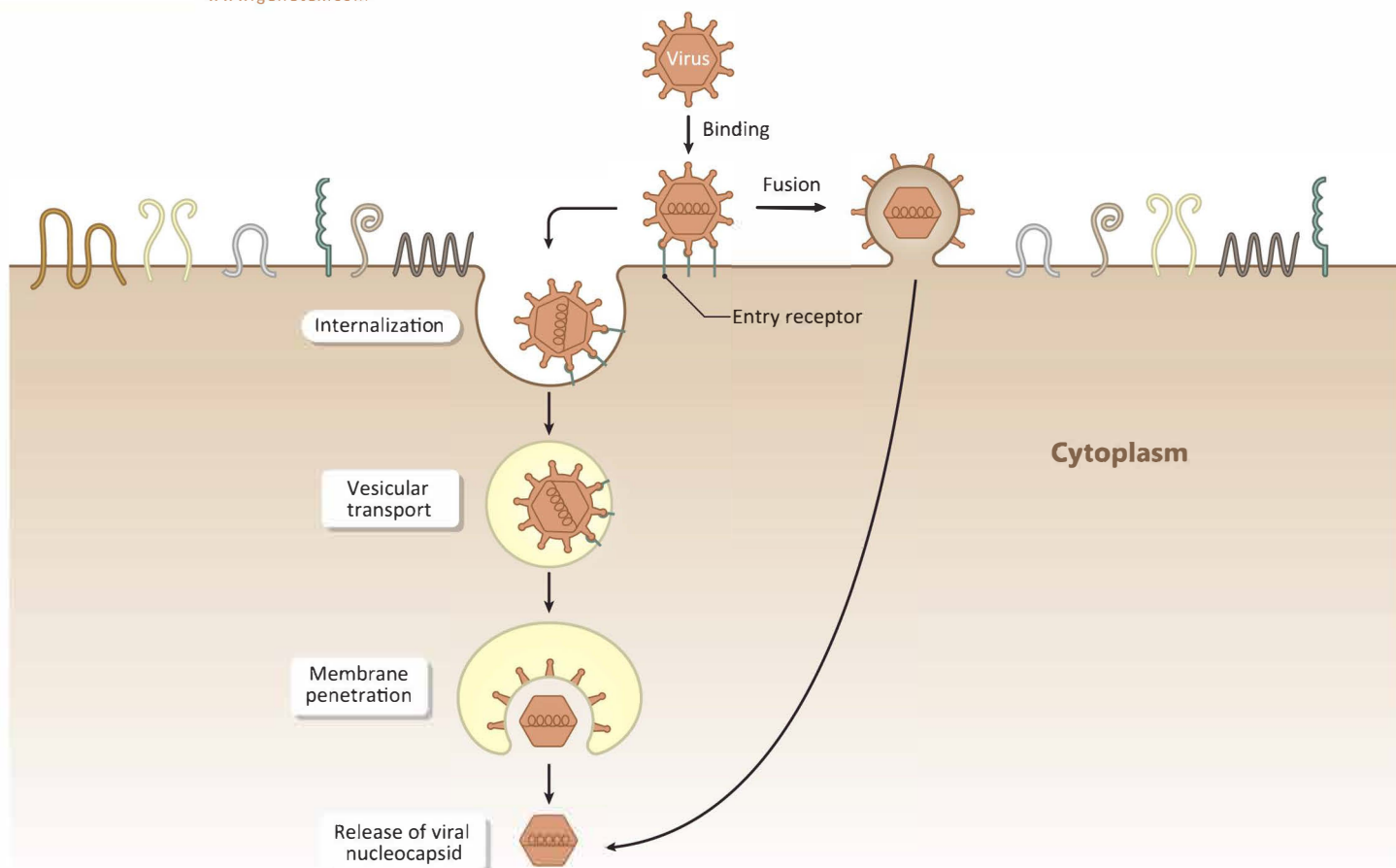




Virus Entry into Host Cells

Your Expertise
 Our Antibodies
 Accelerated Discovery

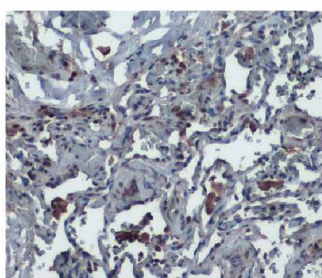
www.genetex.com



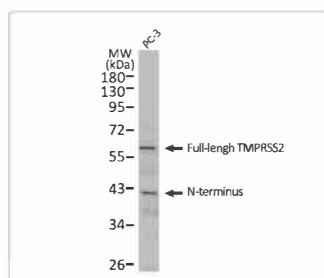
Infection by animal viruses is initiated by viral binding to host cells. Delineation of the mechanisms mediating subsequent viral entry is an area of intense research, as there is considerable complexity and variability among different viruses. Nevertheless, a general framework for this process, particularly for some enveloped viruses, involves the following steps: (1) viral attachment to host cell receptors, (2) cell signaling pathway activation, (3) endocytosis, (4) penetration of cellular membranes and intracellular trafficking, and (5) viral genome uncoating. The viral genome is then available for expression, replication, packaging and release to infect other cells. Understanding the molecular events underlying virus/host cell interactions during entry is of paramount importance for the potential identification of targets for pharmacologic intervention.

Highlighted Products

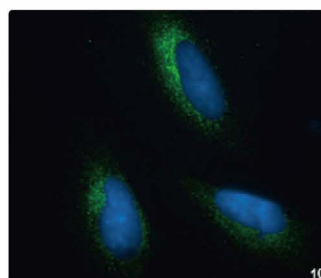
Citation Support KO/KD Validation Protein Overexpression



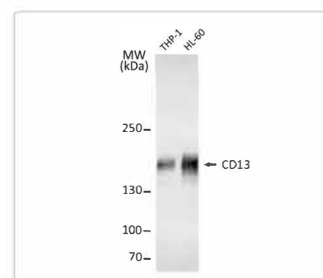
ACE2 antibody [N1N2],
N-term (GTX101395)



TMPRSS2 antibody [N2C3]
(GTX100743)



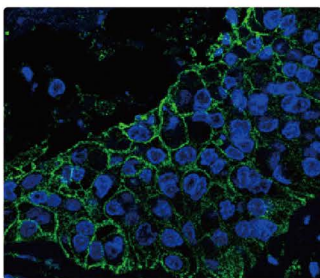
Grp78 antibody [N2C1],
Internal (GTX102580)



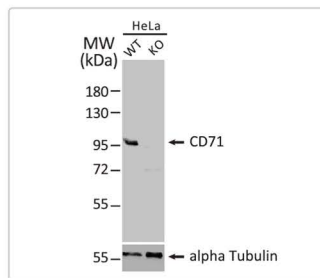
CD13 antibody
(GTX102788)

Attachment factors and receptors

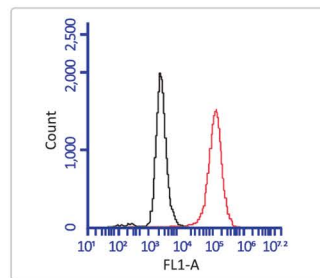
Cat. No.	Product Name	Clonality	Reactivity	Applications
GTX15349	ACE2 antibody	Rb pAb	Hu	WB, ICC/IF, IHC-P, ELISA
GTX101395	ACE2 antibody [N1N2], N-term	Rb pAb	Hu, Ms, Rat	WB, IHC-P
GTX01160	ACE2 antibody [SN0754]	Rb mAb	Hu, Ms, Rat	WB, ICC/IF, IHC-P
GTX129407	AXL antibody	Rb pAb	Hu, Ms	WB, IHC-P, ELISA
GTX83125	AXL antibody [7E10]	Ms mAb	Hu	WB, ICC/IF, ELISA
GTX21673	CCR5 antibody	Gt pAb	Hu	WB, ICC/IF, ELISA, IHC
GTX12309	CCR5 antibody	Rb pAb	Ms	WB, IHC-P
GTX10397	CCR5 antibody [45523]	Ms mAb	Hu	IHC-P, FACS
GTX102788	CD13 antibody	Rb pAb	Hu	WB, IHC-P
GTX42411	CD13 antibody [WM15] (Low endotoxin, azide free)	Ms mAb	Hu, RMK	IHC-Fr, FACS, IP, ELISA, Functional Assay
GTX129572	CD155 antibody	Rb pAb	Hu	WB
GTX72348	CD155 antibody [D171]	Ms mAb	Hu, Mk	ICC/IF, FACS, Blocking
GTX84602	CD26 antibody [11D7]	Ms mAb	Hu, Ms	WB, ICC/IF, IHC-P, FACS, ELISA
GTX15833	CD26 antibody [236.3]	Ms mAb	Hu, Rat	ICC/IF, FACS, IP, IHC
GTX74728	CD21 antibody [LB21]	Ms mAb	Hu, Gt, Sheep, Bov, Cat, Mink	IHC-Fr, FACS, IP
GTX64400	CD21 antibody	Rb pAb	Hu, Ms, Rat	WB, IHC-P
GTX52694	CD299 antibody [2U25]	Ms mAb	Hu	FACS, Neutralizing/Blocking
GTX47033	CD299 antibody, N-term	Rb pAb	Hu	WB, IHC-P
GTX44531	CD4 antibody [GK1.5]	Rat mAb	Ms	WB, ICC/IF, IHC-P, IHC-Fr, FACS, IP, ELISA
GTX01136	CD4 antibody [ST0488]	Rb mAb	Hu	WB, ICC/IF, IHC-P
GTX76318	CD4 antibody [W3/25]	Ms mAb	Rat	IHC-P, IHC-Fr, FACS
GTX01058	CD46 antibody [JB25-49]	Rb mAb	Hu, Rat	WB, ICC/IF, IHC-P
GTX20789	CD46 antibody [MEM-258]	Ms mAb	Hu, Bov	WB, IHC-P, FACS, IP
GTX34547	CD71 antibody [66IG10]	Ms mAb	Hu	ICC/IF, FACS, ELISA
GTX78312	CD71 antibody [MEM-75] (FITC)	Ms mAb	Hu, Rb	FACS
GTX102596	CD71 antibody [N2C1], Internal	Rb pAb	Hu, Ms	WB, ICC/IF
GTX101766	CD81 antibody	Rb pAb	Hu	WB, IHC-P, FACS, Blocking
GTX43505	CD81 antibody [1D6]	Ms mAb	Hu, Goat, Sheep, Chmp	WB, ICC/IF, IHC-P, FACS, IP, ELISA
GTX134832	Claudin 1 antibody	Rb pAb	Hu, Ms, Rat	WB
GTX54539	Claudin 1 antibody	Rb pAb	Hu, Ms, Rat, Rb, Bov, Dog, Fish, Avian	WB, ICC/IF, IHC-P, IHC-Fr, IP, ELISA, IHC
GTX127349	CLEC5A antibody	Rb pAb	Hu, Ms	WB
GTX22074	CXCR4 antibody	Rb pAb	Hu, Ms, Rat	WB, ICC/IF, IHC-P, IHC-Fr, FACS, IP, ELISA
GTX74430	DC-SIGN antibody	Rb pAb	Hu, Sheep	WB, ICC/IF, IHC-Fr
GTX34673	DC-SIGN antibody [C209/1781]	Ms mAb	Hu	WB, IHC-P
GTX43681	DC-SIGN antibody [MR-1] (FITC)	Ms mAb	Hu, Ms	FACS
GTX50699	Ephrin B2 (phospho Tyr316) antibody	Rb pAb	Hu	WB
GTX50700	Ephrin B2 (phospho Tyr330) antibody	Rb pAb	Hu	WB
GTX32589	Ephrin B2 antibody	Rb pAb	Hu, Ms, Rat	WB, ICC/IF, IHC-P
GTX105582	Ephrin B2 antibody [N1C1]	Rb pAb	Hu, Ms, Rat	WB
GTX50971	ganglioside GM1 antibody	Rb pAb	Hu, Rat	IHC-P, FACS
GTX17986	GluT1 antibody [GLUT1/2475]	Ms mAb	Hu	WB, ICC/IF, IHC-P, FACS, ELISA, Protein Array
GTX48633	Grp78 antibody	Rb pAb	Hu, Ms, Rat, Zfsh, Sheep, Dm, Bov, Chk, C. elegans, Primate	WB, ICC/IF, FACS
GTX57602	Grp78 antibody [AT3D2]	Ms mAb	Hu	WB, ICC/IF
GTX102580	Grp78 antibody [N2C1], Internal	Rb pAb	Hu, Ms, Rat	WB, ICC/IF, IHC-P, IP
GTX116413	Hemoglobin gamma A antibody	Rb pAb	Hu	WB
GTX20073	Heparan Sulfate antibody [10E4]	Ms mAb	-	WB, FACS, ELISA, IHC



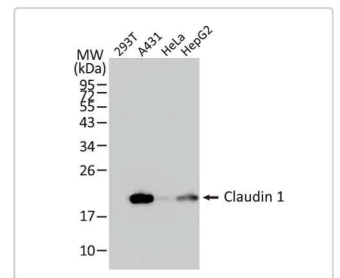
AXL antibody (GTX129407)



CD71 antibody [N2C1], Internal (GTX102596)

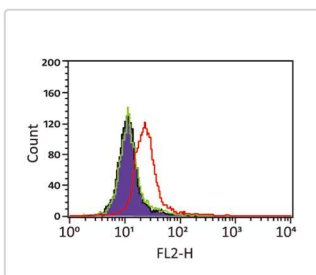


CD81 antibody (GTX101766)

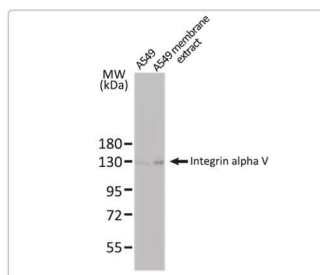


Claudin 1 antibody (GTX134842)

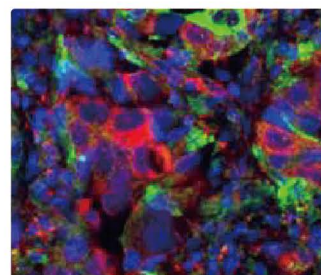
Cat. No.	Product Name	Clonality	Reactivity	Applications
GTX104126	Hsp70 antibody	Rb pAb	Hu, Ms, Rat	WB, ICC/IF, IHC-P, IP
GTX25439	Hsp70 antibody [3A3]	Ms mAb	Hu, Ms, Rat, Yeast, Dm, Pig, Mk, Amph, Echinoderms, Plant, Fish, Arthropod, Mollusc, Primate, Avian, Insect	WB, ICC/IF, IHC-P, FACS, IP, ELISA, IHC, Gel supershift assays, Neutralizing/Blocking
GTX13494	Hsp90 antibody [16F1]	Rat mAb	Hu, Ms, Rat, Sheep, Dm, Bov, Dog, Hm, Gpig, Pig, Mk, Carp, Rtrout	WB, ICC/IF, IHC-P, IP, EIA, IHC
GTX13492	Hsp90 antibody [AC88]	Ms mAb	Hu, Ms, Rat, Rb, Sheep, Bov, Dog, Hm, Gpig, Pig, Mk, Carp, Rtrout, Fish	WB, ICC/IF, IHC-P, FACS, IP
GTX64322	ICAM1 / CD54 antibody [GT1130]	Rb mAb	Hu	WB, ICC/IF, IHC-P
GTX22213	ICAM1 / CD54 antibody [MEM-111]	Ms mAb	Hu, Rat, Bov	WB, IHC-P, FACS, ELISA
GTX100450	ICAM1 / CD54 antibody [N1C2]	Rb pAb	Hu	WB, IHC-P
GTX76488	Integrin alpha V + beta 3 antibody [23C6]	Ms mAb	Hu, Rat, Chk	ICC/IF, IHC-Fr, FACS, IP, Functional Assay
GTX39987	Integrin alpha V + beta 5 antibody [P1F6]	Ms mAb	Hu, Chk	ICC/IF, IHC-Fr, FACS, IP, ELISA
GTX16821	Integrin alpha V antibody [272-17E6]	Ms mAb	Hu	FACS, IP, ELISA, IHC
GTX100789	Integrin alpha V antibody [C2C3], C-term	Rb pAb	Hu, Ms	WB, IHC-P, ELISA
GTX41924	Integrin alpha V antibody [RMV-7] (Low endotoxin, azide free)	Rat mAb	Ms	IHC-Fr, FACS, IP, Functional Assay
GTX50435	Integrin beta 3 antibody	Rb pAb	Hu, Ms	WB, IHC-P
GTX43357	Integrin beta 3 antibody [JM2E5] (FITC)	Ms mAb	Hu, Bov, Dog, Pig, Hrs	ICC/IF, FACS
GTX54374	Integrin beta 5 antibody	Rb pAb	Ms, Rat	WB
GTX89579	Integrin beta 5 antibody, C-term	Gt pAb	Hu, Ms	WB
GTX53992	JAM-A antibody	Rb pAb	Hu, Ms, Pig	WB, ICC/IF
GTX42074	JAM-A antibody [H202-106]	Rat mAb	Ms	IHC-Fr, FACS, IP
GTX104507	JAM-B antibody	Rb pAb	Hu	WB, IHC-P, IHC
GTX52880	JAM-B antibody [4L28]	Ms mAb	Hu	WB, Neutralizing/Blocking
GTX54396	JAM-C antibody [CRAM-18F26]	Ms mAb	Hu, Ms	ICC/IF, IHC-Fr, IP, Functional Assay, Immunoassay
GTX132860	LDL Receptor antibody	Rb pAb	Hu	WB
GTX80914	LDL Receptor antibody, Internal	Rb pAb	Hu, Ms	WB, FACS
GTX53806	Mannose Receptor antibody	Rb pAb	Ms, Rat, Pig	IHC-P
GTX00491-06	Mannose Receptor antibody [43511] (FITC)	Ms mAb	Hu	FACS
GTX42263	Mannose Receptor antibody [MR5D3]	Rat mAb	Ms	ICC/IF, IHC-P, IHC-Fr, FACS, IP
GTX106283	MOG antibody [C2C3], C-term	Rb pAb	Ms, Rat	WB, ICC/IF, IHC-Fr
GTX89606	MOG antibody, C-term	Gt pAb	Hu	WB, IHC-P
GTX37443	NKp44 antibody	Rb pAb	Hu, Rat	WB, IHC-P
GTX50073	NKp44 antibody [8F12]	Ms mAb	Hu	WB, ELISA, WB-Ag
GTX30687	NPC1 antibody	Rb pAb	Hu, Ms, Rat, Hamster, Pig, Primate	WB, ICC/IF, IHC-P, EM
GTX130824	Nectin 1 antibody	Rb pAb	Hu, Ms, Rat	WB, ICC/IF
GTX114949	Occludin antibody	Rb pAb	Hu, Rat	WB, ICC/IF, IHC-P, IHC-Fr
GTX85016	Occludin antibody	Rb pAb	Hu, Ms, Rat	WB, IHC-P, ELISA
GTX20003	SR-BI antibody	Rb pAb	Hu, Ms, Rat, Bov, Hm, Mtd, S. japonicum, Primate	WB, ICC/IF, IHC-P, IHC-Fr, FACS, IP, Neutralizing/Blocking
GTX85068	TIM-1 antibody	Rb pAb	Hu, Ms	WB, IHC-P, ELISA
GTX12016	TIM-1 antibody	Rb pAb	Rat	WB, IHC-P, IHC-Fr
GTX54117	TIM-3 antibody	Rb pAb	Hu, Ms, Rat	WB, IHC-P
GTX49381	TIM-3 antibody	Rb pAb	Hu	WB, IHC-P, ELISA
GTX65883	TIM-3 antibody	Rb pAb	Hu, Ms	WB, ICC/IF
GTX31299	TIM-4 antibody	Rb pAb	Hu, Ms	WB, ICC/IF, IHC-P, ELISA
GTX14149	TIM-4 antibody [RMT4-53]	Rat mAb	Ms	WB, ICC/IF, FACS, in vivo, Neutralizing/Blocking
GTX31297	TNFRSF14 antibody	Rb pAb	Hu, Ms	WB, IHC-P, ELISA



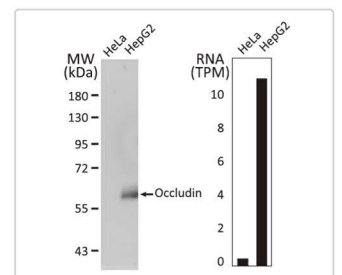
CXCR4 antibody (GTX22074)



Integrin alpha V antibody [C2C3], C-term (GTX100789)



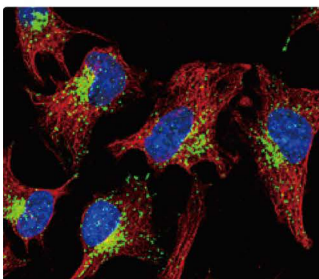
ICAM1 / CD54 antibody [N1C2] (GTX100450)



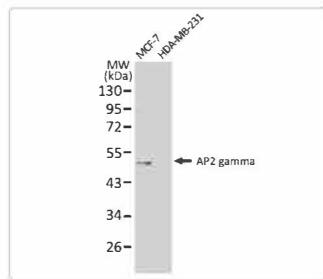
Occludin antibody (GTX114949)

Internalization and penetration

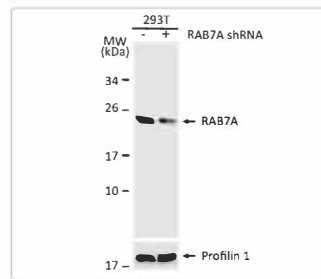
Cat. No.	Product Name	Clonality	Reactivity	Applications
GTX113564	AP2 alpha antibody	Rb pAb	Hu, Ms, Rat	WB, IP
GTX15878	AP2 alpha antibody [3B5]	Ms mAb	Hu, Ms, Chk	WB, ICC/IF, IHC-P, IP, IHC
GTX114832	AP2 beta antibody	Rb pAb	Hu, Rat	WB, IP
GTX134259	AP2 gamma antibody	Rb pAb	Hu	WB
GTX18116	AP2 gamma antibody [AP2g 6E4/4]	Ms mAb	Hu, Ms	WB, IHC-P
PK GTX16618	Cav alpha 2/delta 3 antibody	Rb pAb	Hu, Ms, Rat	WB, ICC/IF, IHC-Fr, LCI
GTX108807	Cav beta 1 antibody [C1C3]	Rb pAb	Hu, Ms, Rat	WB, ICC/IF
C GTX131906	Cav beta 2 antibody	Rb pAb	Hu, Ms	WB, IHC-Fr
GTX100202	Cav beta 4 antibody [C3], C-term	Rb pAb	Hu, Ms	WB, ICC/IF, IHC-P, IHC-Fr
GTX16626	Cav gamma 5 antibody	Rb pAb	Hu, Ms, Rat	WB, ICC/IF, LCI
GTX16602	Cav pan alpha 1 antibody	Rb pAb	Hu, Ms, Rat	WB, IP, IHC
GTX132976	Clathrin heavy chain antibody	Rb pAb	Hu, Ms, Rat	WB, ICC/IF
GTX22731	Clathrin heavy chain antibody [X22]	Ms mAb	Hu, Ms, Rat, Bov, Dog, Hm, Primate	WB, ICC/IF, IHC-P, IHC-Fr, FACS, IP, IHC, IM, Neutralizing/Blocking
PK C GTX11332	Clathrin Light chain antibody [CON.1]	Ms mAb	Hu, Ms, Rat, Yeast, Bov	WB, ICC/IF, IP
GTX14448	Dynamin 1 antibody [4E67]	Ms mAb	Hu, Ms, Rat, Bov, Hm, Chk, Pig, Xenopus	WB, FACS, IP, IHC
GTX110379	Dynamin 1 antibody [N3C2-2], Internal	Rb pAb	Hu, Ms, Rat	WB
C GTX113171	Dynamin 2 antibody [N1N3]	Rb pAb	Hu, Ms, Rat	WB, ICC/IF, IHC-P
C GTX23458	Dynamin 3 antibody	Rb pAb	Hu, Ms, Rat	WB, ICC/IF
C GTX20205	F-Actin antibody [NH3]	Ms mAb	Hu, Ms, Rat, Rb	WB, ICC/IF, IHC-Fr, FACS, ELISA
C GTX19284	LAMP1 antibody	Rb pAb	Hu, Ms	WB, ICC/IF
C GTX634336	LAMP1 antibody [GT25212]	Ms mAb	Hu, Ms, Rat	WB, ICC/IF, IHC-P
PK C GTX54678	RAB11A antibody	Rb pAb	Hu	WB, ICC/IF
GTX54678	RAB11A antibody	Rb pAb	Hu	WB, ICC/IF
GTX11036	RAB11A antibody [2F3]	Ms mAb	Hu, Dog	WB, ELISA
GTX119095	RAB11B antibody [N1C3]	Rb pAb	Hu, Ms, Rat	WB, ICC/IF, IHC-P, IHC-Fr
GTX64938	RAB21 antibody	Rb pAb	Hu, Ms, Rat	WB, ICC/IF
GTX17174	RAB21 antibody	Rb pAb	Hu, Ms, Rat	WB, IHC-P, ELISA
GTX65558	RAB34 antibody	Rb pAb	Ms	WB
GTX87791	RAB34 antibody	Rb pAb	Hu	IHC-P
C GTX13253	RAB5 antibody	Rb pAb	Hu, Ms, Rat, Zfsh, Bov, Dog, Hm, Gpig, Pig, Mk	WB, ICC/IF, IHC-Fr, IP, IHC
PK GTX109665	RAB5A antibody	Rb pAb	Hu, Ms, Rat	WB, ICC/IF, IHC-P, IP
GTX53775	RAB5A antibody [3A4]	Ms mAb	Hu, Ms	WB, ELISA
PK GTX106661	Rab5b antibody	Rb pAb	Hu	WB
GTX32828	RAB5C antibody	Rb pAb	Hu, Ms, Rat	WB, IHC-P
PK C GTX132548	RAB7A antibody	Rb pAb	Hu, Ms, Rat	WB, ICC/IF, IHC-P
C GTX16196	RAB7A antibody [Rab7-117]	Ms mAb	Hu, Ms, Rat, Bov, Dog, Chk, Mk	WB, ICC/IF, IP, ELISA
C GTX22810	Rab9 antibody [Mab9]	Ms mAb	Hu, Rat, Bov, Dog, Hm, Mk, Primate	WB, ICC/IF, IHC-P, FACS, IP, IHC, IM
GTX88278	SNX1 antibody, Internal	Gt pAb	Hu	WB, ICC/IF, IHC-P
GTX100743	TMPRSS2 antibody [N2C3]	Rb pAb	Hu	WB



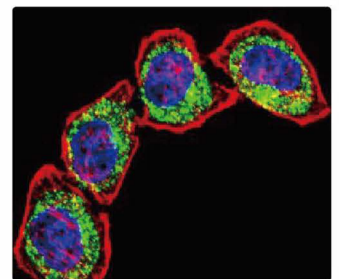
LAMP1 antibody [GT25212] (GTX634336) C PK A



AP2 gamma antibody (GTX134259) C PK



RAB7A antibody (GTX132548) PK A



Clathrin heavy chain antibody [X22] (GTXGTX22731) C PK

official distributor

SZABO-SCANDIC HandelsgmbH
 Quellenstraße 110, A-1100 Wien
 T. +43(0)1 489 3961-0
 F. +43(0)1 489 3961-7
 mail@szabo-scandic.com
 www.szabo-scandic.com

SZABO SCANDIC

GeneTex

International
USA

Tel: 886.3.6208988
Tel: 1.949.553.1900

Toll-free: 1.877.436.3839