

official distributor

SZABO-SCANDIC HandelsgmbH  
Quellenstraße 110, A-1100 Wien  
T. +43(0)1 489 3961-0  
F. +43(0)1 489 3961-7  
mail@szabo-scandic.com  
www.szabo-scandic.com



SZABO  
SCANDIC



GeneTex

Your Expertise

Our Antibodies

Accelerated Discovery

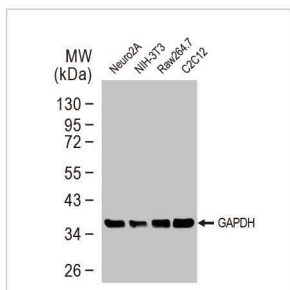
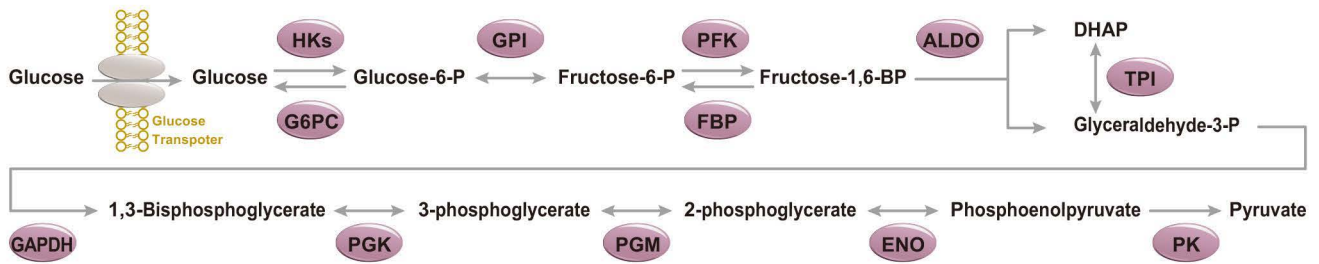
# Metabolic Pathways

- Glycolysis
- TCA Cycle
- $\beta$ -oxidation
- Lypolysis
- Ketogenesis
- Glycogenesis & Glycogenolysis
- Nitrogen Metabolism
- Lipid Biosynthesis
- Pentose Phosphate

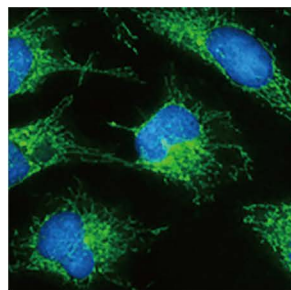


www.genetex.com

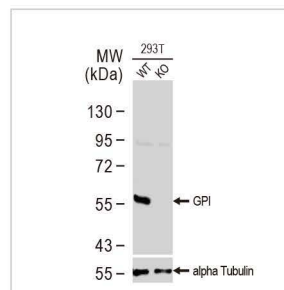
# Glycolysis Pathway



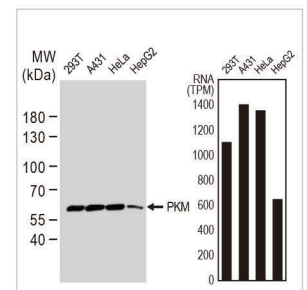
GAPDH antibody [GT239]  
(GTX627408)



Hexokinase II antibody  
(GTX111525)



GPI antibody  
(GTX113203)



PKM antibody  
(GTX107977)



## Antibodies for Glycolysis Pathway

	Cat. No.	Product Name	Clonality	Reactivity	Applications
Glucose transporter	<a href="#">GTX02832</a>	Glut1 antibody [GT1235]	Rb RecAb	Hu,Ms	WB
	<a href="#">GTX37419</a>	GLUT12 antibody	Rb pAb	Hu,Rat	IHC-P
	<a href="#">GTX79317</a>	GLUT4 antibody	Rb pAb	Hu,Ms,Rat	WB
	<a href="#">GTX31226</a>	GLUT4 antibody [1F8]	Ms mAb	Hu,Ms,Rat,Rb,Pig,Mk	WB, ICC/IF, IHC-P, IHC-Fr, IP
	<a href="#">GTX12394</a>	SLC2A8 antibody	Rb pAb	Hu,Ms,Rat,Pig	WB, IHC-P
HK	<a href="#">GTX84440</a>	Glucokinase antibody [3E3]	Ms mAb	Hu	WB, ICC/IF, IHC-P
	<a href="#">GTX105248</a>	Hexokinase 1 antibody	Rb pAb	Hu	WB, ICC/IF, IHC-P
	<a href="#">GTX111525</a>	Hexokinase II antibody	Rb pAb	Hu,Ms,Rat	WB, ICC/IF, IHC-P
G6PC	<a href="#">GTX111409</a>	Hexokinase III antibody [C1C3-2]	Rb pAb	Hu	WB, ICC/IF
	<a href="#">GTX46748</a>	G6PC antibody, N-term	Rb pAb	Hu	WB, IHC-P
GPI	<a href="#">GTX113203</a>	GPI antibody	Rb pAb	Hu	WB, ICC/IF, IHC-P
	<a href="#">GTX84416</a>	GPI antibody [5A11]	Ms mAb	Hu,Dog,Mk	WB, ICC/IF, IHC-P, FACS
PFK	<a href="#">GTX111597</a>	Fructose 6 Phosphate Kinase antibody [C1C3]	Rb pAb	Hu,Ms,Rat	WB, ICC/IF
	<a href="#">GTX111461</a>	Fructose 6 Phosphate Kinase antibody [N1N2-2], N-term	Rb pAb	Hu,Ms,Rat	WB
	<a href="#">GTX105697</a>	PFKL antibody [C1C3]	Rb pAb	Hu,Ms	WB, ICC/IF, IHC-P
	<a href="#">GTX107857</a>	PFKP antibody [N3C3]	Rb pAb	Hu,Ms	WB

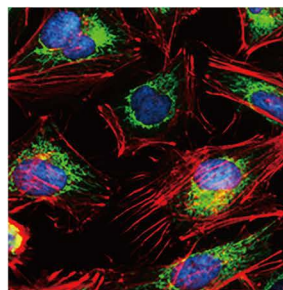
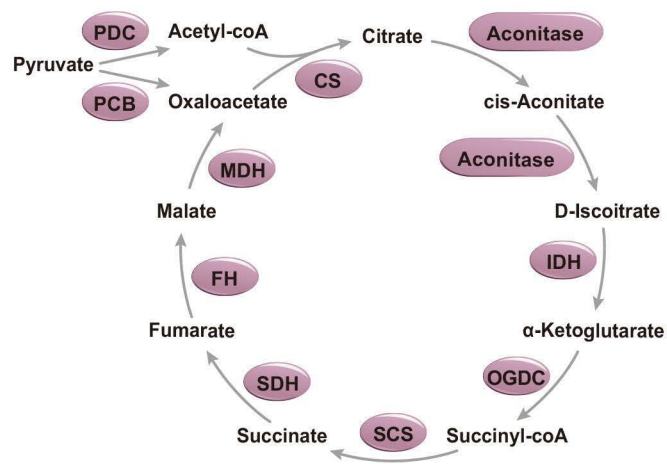


## Antibodies for Glycolysis Pathway

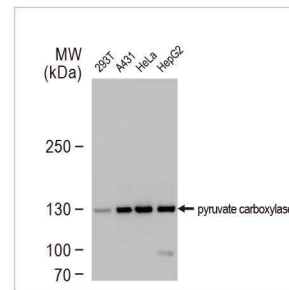
	Cat. No.	Product Name	Clonality	Reactivity	Applications
PFKFB	<a href="#">GTX111733</a>	PFKFB1 antibody [N1N3]	Rb pAb	Hu	WB, ICC/IF, IHC-P
	<a href="#">GTX108335</a>	PFKFB3 antibody [C3], C-term	Rb pAb	Hu	WB, IHC-P, IP
	<a href="#">GTX106237</a>	PFKFB4 antibody [N3C3]	Rb pAb	Hu,Ms	WB, IHC-P
	<a href="#">GTX107755</a>	PFKFB4 antibody	Rb pAb	Hu,Ms,Rat	WB, ICC/IF, IHC-P
FBP	<a href="#">GTX114401</a>	FBP1 antibody	Rb pAb	Hu	WB
	<a href="#">GTX81482</a>	FBP1 antibody, Internal	Rb pAb	Hu,Ms	WB, IHC-P
	<a href="#">GTX53713</a>	FBP2 antibody [AT1E11]	Ms mAb	Hu,Ms	WB, ELISA
	<a href="#">GTX81753</a>	FBP2 antibody, C-term	Rb pAb	Hu,Ms	WB
ALDO	<a href="#">GTX101408</a>	Aldolase A antibody	Rb pAb	Hu,Ms,Rat	WB, IHC-P
	<a href="#">GTX26190</a>	Aldolase A antibody	Goat pAb	Hu,Rb	WB, IP, ELISA
	<a href="#">GTX101363</a>	Aldolase B antibody	Rb pAb	Hu,Ms,Rat,Turtle	WB, ICC/IF, IHC-P
	<a href="#">GTX114914</a>	Aldolase B antibody	Rb pAb	Hu,Ms,Rat	WB, ICC/IF, IHC-P
TPI	<a href="#">GTX102284</a>	Aldolase C antibody [N1C1]	Rb pAb	Hu,Ms,Rat	WB, IHC-Fr
	<a href="#">GTX104618</a>	Triosephosphate isomerase antibody [C2C3], C-term	Rb pAb	Hu,Ms,Rat	WB, ICC/IF, IHC-P, ELISA
	<a href="#">GTX630779</a>	Triosephosphate isomerase antibody [GT181]	Ms mAb	Hu,Ms,Rat	WB, ICC/IF, IHC-P
	<a href="#">GTX630778</a>	Triosephosphate isomerase antibody [GT1111]	Ms mAb	Hu,Ms,Rat	WB, IHC-P
GAPDH	<a href="#">GTX100118</a>	GAPDH antibody	Rb pAb	<b>1</b>	WB, ICC/IF, IHC-P, IP
	<a href="#">GTX627408</a>	GAPDH antibody [GT239]	Ms mAb	<b>2</b>	WB, ICC/IF, IHC-P, EMSA
	<a href="#">GTX116000</a>	GAPDHS antibody	Rb pAb	Hu,Ms	WB, ICC/IF, IHC-P
PGK	<a href="#">GTX107614</a>	PGK1 antibody	Rb pAb	Hu,Ms,Rat,Yeast	WB, ICC/IF, IHC-P, IP, ELISA, PLA
	<a href="#">GTX101405</a>	PGK1 antibody [N1C1]	Rb pAb	Hu,Ms,Rat	WB, IHC-P
	<a href="#">GTX107837</a>	PGK2 antibody [N3C3]	Rb pAb	Hu	WB, IHC-P
PGM	<a href="#">GTX629745</a>	PGAM1 antibody [GT256]	Ms mAb	Hu,Ms,Rat	WB, ICC/IF
	<a href="#">GTX114633</a>	PGAM1 antibody [N1C3]	Rb pAb	Hu,Ms	WB
	<a href="#">GTX109582</a>	PGAM2 antibody	Rb pAb	Hu,Rat	WB, ICC/IF
ENO	<a href="#">GTX101803</a>	ENO1 antibody [N3C3]	Rb pAb	Hu,Ms,Rat	WB, ICC/IF, IHC-P, Dot
	<a href="#">GTX113179</a>	ENO1 antibody	Rb pAb	Hu,Ms,Rat	WB, ICC/IF, IHC-P, IP
	<a href="#">GTX630507</a>	ENO1 antibody [GT2217]	Ms mAb	Hu,Rat	WB
	<a href="#">GTX113429</a>	ENO3 antibody	Rb pAb	Hu,Ms,Rat	WB, IHC-P
	<a href="#">GTX133249</a>	NSE antibody	Rb pAb	Ms,Rat	WB, ICC/IF, IHC-P, IHC-Fr
Pyruvate kinase	<a href="#">GTX101553</a>	NSE antibody [N1C1]	Rb pAb	Hu,Ms,Rat	WB, IHC-P, IHC-Fr
	<a href="#">GTX113428</a>	NSE antibody [C1C3]	Rb pAb	Hu,Ms,Rat	WB, ICC/IF, IHC-Fr
	<a href="#">GTX111604</a>	PKM antibody	Rb pAb	Hu,Ms,Rat	WB, ICC/IF, IHC-P
	<a href="#">GTX107977</a>	PKM antibody	Rb pAb	Hu,Ms,Rat	WB, ICC/IF, IHC-P, IP
	<a href="#">GTX111536</a>	Pyruvate Kinase (liver/RBC) antibody	Rb pAb	Hu,Rat	WB, ICC/IF, IHC-P
	<a href="#">GTX107546</a>	Pyruvate Kinase (liver/RBC) antibody	Rb pAb	Hu,Ms,Rat	WB
	<a href="#">GTX111319</a>	PKM antibody	Rb pAb	Hu,Ms,Rat	WB, IHC-P
	<a href="#">GTX107681</a>	PKM antibody	Rb pAb	Hu,Ms,Rat	WB, ICC/IF, IHC-P

- 1** Hu,Ms,Rat,Zfish,Yeast,Rb,Dm,Bov,Dog,Hm,Chk,Pig,Mk,E. coli,Mosq,Nematode,Pika,Plant,Fish,Bacteria,milkfish  
**2** Hu,Ms,Rat,Zfish,Yeast,Dm,Pig,Mk,C. albicans,E. coli

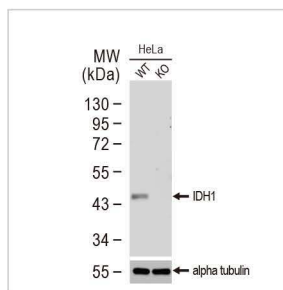
# TCA Cycle



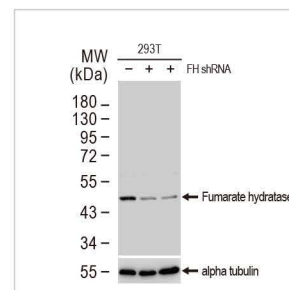
Citrate synthase antibody [GT1761] ([GTX628143](#))



Pyruvate Carboxylase antibody ([GTX132002](#))



IDH1 antibody [GT1521] ([GTX629818](#))



Fumarate hydratase antibody ([GTX110128](#))



## Antibodies for TCA Cycle

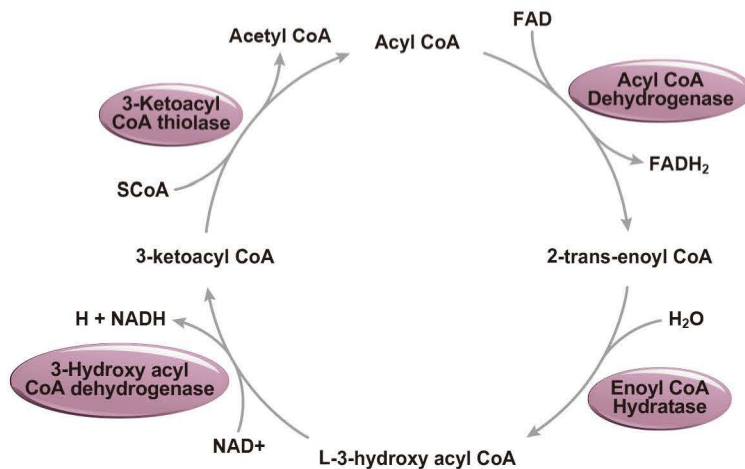
	Cat. No.	Product Name	Clonality	Reactivity	Applications
PCB	<a href="#">GTX132002</a>	Pyruvate Carboxylase antibody	Rb pAb	Hu,Rat	WB, ICC/IF, IHC-P, IP
	<a href="#">GTX131987</a>	Pyruvate Carboxylase antibody	Rb pAb	Hu,Ms	WB, ICC/IF, IHC-P
Aconitase	<a href="#">GTX102974</a>	Aconitase 1 antibody [N1C1]	Rb pAb	Hu	WB, ICC/IF
	<a href="#">GTX128976</a>	Aconitase 1 antibody	Rb pAb	Hu	WB, IHC-P
	<a href="#">GTX109736</a>	Aconitase 2 antibody [C1C3]	Rb pAb	Hu,Ms,Rat	WB, ICC/IF, IHC-P, IP
	<a href="#">GTX114233</a>	Aconitase 2 antibody [N1N3]	Rb pAb	Hu,Ms,Rat,Chk	WB, ICC/IF, IHC-P, IP
	<a href="#">GTX84966</a>	Aconitase 2 antibody [7A11]	Ms mAb	Hu	WB, ICC/IF, FACS
IDH	<a href="#">GTX105179</a>	IDH1 antibody	Rb pAb	Hu,Ms,Rat	WB, IHC-P, IP
	<a href="#">GTX133076</a>	IDH1 antibody	Rb pAb	Hu	WB
	<a href="#">GTX629818</a>	IDH1 antibody [GT1521]	Ms mAb	Hu,Ms,Rat	WB, ICC/IF, IP
	<a href="#">GTX628487</a>	IDH2 antibody [GT673]	Ms mAb	Hu,Ms,Rat	WB, ICC/IF, IHC-P
	<a href="#">GTX104073</a>	IDH3A antibody	Rb pAb	Hu,Ms,Rat	WB, ICC/IF, IHC-P
OGDC	<a href="#">GTX114486</a>	IDH3A antibody	Rb pAb	Hu,Ms,Rat	WB, IHC-P
	<a href="#">GTX113467</a>	IDH3G antibody	Rb pAb	Hu	IHC-P
	<a href="#">GTX112555</a>	DLST antibody [N3C3]	Rb pAb	Hu,Rat	WB, ICC/IF, IHC-P
	<a href="#">GTX101245</a>	DLD antibody	Rb pAb	Hu,Ms,Rat	WB, ICC/IF, IHC-P
	<a href="#">GTX101232</a>	DLD antibody [N1N3]	Rb pAb	Hu,Rat	WB, IHC-P
SCS	<a href="#">GTX105124</a>	OGDH antibody [C2C3], C-term	Rb pAb	Hu,Ms	WB, ICC/IF, IHC-P
	<a href="#">GTX109728</a>	SUCLA2 antibody [N2C3]	Rb pAb	Hu,Ms	WB, ICC/IF, IHC-P
SDH	<a href="#">GTX107002</a>	SUCLG2 antibody	Rb pAb	Hu,Ms	WB, ICC/IF, IHC-P
	<a href="#">GTX101689</a>	SDHA antibody	Rb pAb	Hu,Ms,Rat	WB, ICC/IF, IHC-P
	<a href="#">GTX632636</a>	SDHA antibody [GT20710]	Ms mAb	Hu,Ms,Rat	WB, ICC/IF, IHC-P
	<a href="#">GTX104628</a>	SDHB antibody [C2C3], C-term	Rb pAb	Hu,Ms	WB, ICC/IF, IHC-P
	<a href="#">GTX113833</a>	SDHB antibody	Rb pAb	Hu,Ms,Rat	WB, ICC/IF, IHC-P



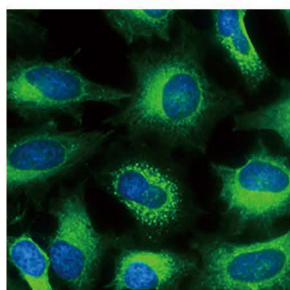
## Antibodies for TCA Cycle

	Cat. No.	Product Name	Clonality	Reactivity	Applications
FH	<a href="#">GTX109877</a>	Fumarate hydratase antibody	Rb pAb	Hu,Ms,Rat	WB, ICC/IF, IHC-P
	<a href="#">GTX110128</a>	Fumarate hydratase antibody [N2C2], Internal	Rb pAb	Hu,Ms,Rat	WB, ICC/IF, IHC-P
	<a href="#">GTX630145</a>	Fumarate hydratase antibody [GT548]	Ms mAb	Hu,Ms,Rat	WB
	<a href="#">GTX630146</a>	Fumarate hydratase antibody [GT7612]	Ms mAb	Hu,Ms,Rat	WB, ICC/IF
MDH	<a href="#">GTX130900</a>	MDH1 antibody	Rb pAb	Hu	WB
	<a href="#">GTX105870</a>	MDH2 antibody	Rb pAb	Hu,Ms,Rat	WB, ICC/IF, IHC-P
CS	<a href="#">GTX110624</a>	Citrate synthase antibody [N2C3]	Rb pAb	Hu,Ms,Rat,Chk,Mk,Frg	WB, ICC/IF, IHC-P, IP
	<a href="#">GTX628143</a>	Citrate synthase antibody [GT1761]	Ms mAb	Hu,Ms,Rat,Zfsh	WB, ICC/IF, IHC-P
ATP citrate lyase	<a href="#">GTX112379</a>	ATP citrate lyase antibody [C2C3], C-term	Rb pAb	Hu,Ms,Rat	WB, ICC/IF
	<a href="#">GTX112387</a>	ATP citrate lyase antibody [N1N2], N-term	Rb pAb	Hu,Ms,Rat	WB, ICC/IF, IHC-P
PEPCK	<a href="#">GTX114919</a>	PCK2 antibody	Rb pAb	Hu,Ms,Rat	WB, ICC/IF, IHC-P
PDC	<a href="#">GTX109766</a>	DLAT antibody	Rb pAb	Hu	WB, ICC/IF, IHC-P
	<a href="#">GTX101232</a>	DLD antibody [N1N3]	Rb pAb	Hu,Rat	WB, IHC-P
	<a href="#">GTX101245</a>	DLD antibody	Rb pAb	Hu,Ms,Rat	WB, ICC/IF, IHC-P
	<a href="#">GTX106352</a>	PDHX antibody [C3], C-term	Rb pAb	Hu	WB
	<a href="#">GTX104015</a>	Pyruvate Dehydrogenase E1 alpha antibody	Rb pAb	Hu,Ms,Rat	WB, ICC/IF, IHC-P, IP
	<a href="#">GTX104040</a>	Pyruvate Dehydrogenase E1 beta subunit antibody	Rb pAb	Hu,Ms,Rat	WB, ICC/IF, IHC-P
	<a href="#">GTX119625</a>	Pyruvate Dehydrogenase E1 beta subunit antibody	Rb pAb	Hu,Ms	WB, ICC/IF, IHC-P
PDK	<a href="#">GTX105999</a>	Pyruvate dehydrogenase kinase 1 / PDK1 antibody [N1C3]	Rb pAb	Hu	WB
	<a href="#">GTX60386</a>	Pyruvate dehydrogenase kinase 1 / PDK1 antibody [4A11]	Ms mAb	Hu,Ms,Rat,Mk	WB, ICC/IF, IHC-P, FACS, ELISA
	<a href="#">GTX55290</a>	PDK2 antibody	Rb pAb	Hu,Rat	WB, IHC-P
	<a href="#">GTX104286</a>	PDK3 antibody [N1C2]	Rb pAb	Hu,Ms,Frg,Squirrel	WB, ICC/IF, IHC-P
	<a href="#">GTX81596</a>	PDK4 antibody, Internal	Rb pAb	Hu	WB, ICC/IF, IHC-P
PDP	<a href="#">GTX109533</a>	PDP1 antibody [N1N3]	Rb pAb	Ms	WB
Malic enzyme	<a href="#">GTX104122</a>	ME1 antibody	Rb pAb	Hu,Ms,Rat	WB, ICC/IF, IHC-P, IP
	<a href="#">GTX632190</a>	ME1 antibody [GT15611]	Ms mAb	Hu,Ms	WB, IHC-P, IHC-Fr
	<a href="#">GTX632189</a>	ME1 antibody [GT979]	Ms mAb	Hu,Ms	WB, ICC/IF, IHC-P
	<a href="#">GTX130673</a>	ME2 antibody	Rb pAb	Hu,Ms	WB, IHC-P, IP
	<a href="#">GTX130689</a>	ME3 antibody	Rb pAb	Ms	WB

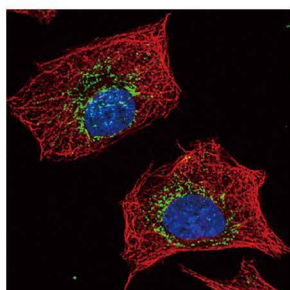
## β-oxidation Pathway



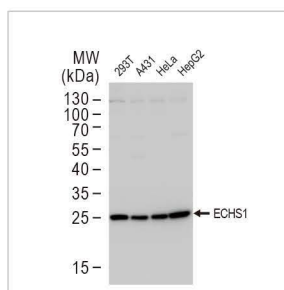
# $\beta$ -oxidation Pathway



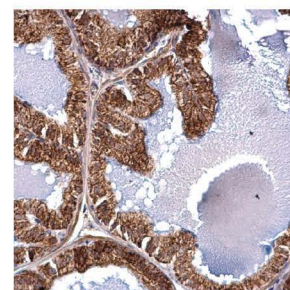
FACL4 antibody [C3], C-term ([GTX100260](#))



ACADM antibody ([GTX100488](#))



ECHS1 antibody [N1C2] ([GTX114376](#))



ACAA2 antibody ([GTX115417](#))

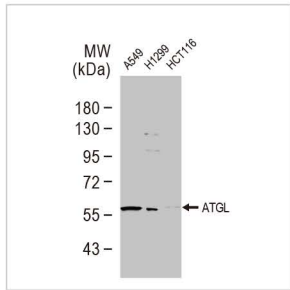
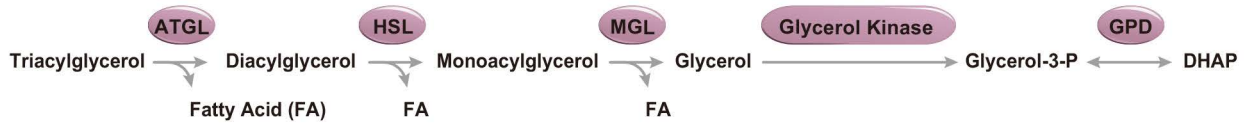


## Antibodies for $\beta$ -oxidation Pathway

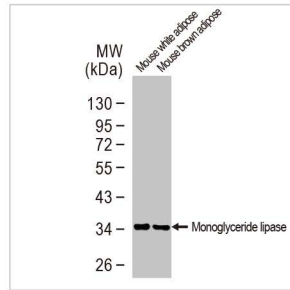
	Cat. No.	Product Name	Clonality	Reactivity	Applications
FACL	<a href="#">GTX100260</a>	FACL4 antibody [C3], C-term	Rb pAb	Hu,Ms,Rat	WB, ICC/IF, IHC-P, IP
	<a href="#">GTX114399</a>	FACL4 antibody [N1N3]	Rb pAb	Hu,Ms,Rat	WB, ICC/IF, IHC-P
	<a href="#">GTX633365</a>	FACL4 antibody [GT186]	Ms mAb	Hu,Ms,Rat	WB, ICC/IF, IHC-P
	<a href="#">GTX632675</a>	FACL4 antibody [GT566]	Ms mAb	Hu,Ms,Rat	WB, IHC-P
	<a href="#">GTX115693</a>	ACSL6 antibody	Rb pAb	Hu,Ms,Rat	WB, IHC-P
	<a href="#">GTX112431</a>	ACSL3 antibody	Rb pAb	Hu	WB, ICC/IF, IHC-P
ACAD	<a href="#">GTX112430</a>	ACSL1 antibody	Rb pAb	Hu	WB, IHC-P
	<a href="#">GTX100488</a>	ACADM antibody	Rb pAb	Hu,Ms,Rat	WB, ICC/IF, IHC-P
	<a href="#">GTX101393</a>	ACADM antibody	Rb pAb	Hu,Ms	WB, ICC/IF, IHC-P
	<a href="#">GTX100487</a>	ACADM antibody	Rb pAb	Hu,Ms	WB, ICC/IF, IHC-P
	<a href="#">GTX100032</a>	ACADM antibody	Rb pAb	Hu	WB, ICC/IF, IHC-P
	<a href="#">GTX114231</a>	ACADSB antibody	Rb pAb	Hu	WB, ICC/IF, IHC-P
	<a href="#">GTX100486</a>	ACADL antibody [N1N2], N-term	Rb pAb	Hu	WB, IHC-P
	<a href="#">GTX100490</a>	ACADS antibody	Rb pAb	Hu	WB, IHC-P
	<a href="#">GTX103305</a>	ACAD8 antibody [N3C3]	Rb pAb	Hu	WB
	<a href="#">GTX114232</a>	ACADVL antibody [N1C1]	Rb pAb	Hu,Ms,Rat	WB, ICC/IF, IHC-P
ECHS	<a href="#">GTX114376</a>	ECHS1 antibody [N1C2]	Rb pAb	Hu,Ms	WB, ICC/IF, IHC-P, IP
	<a href="#">GTX114375</a>	ECHS1 antibody	Rb pAb	Hu,Ms	WB, ICC/IF, IHC-P, IP
	<a href="#">GTX103552</a>	ECH1 antibody [N1C3]	Rb pAb	Hu,Ms	WB, IHC-P
	<a href="#">GTX103864</a>	HSD17B4 antibody	Rb pAb	Hu,Rat	WB, ICC/IF, IHC-P
	<a href="#">GTX114978</a>	HSD17B4 antibody	Rb pAb	Hu,Ms	WB, ICC/IF, IHC-P
HADH	<a href="#">GTX100301</a>	ERAB antibody	Rb pAb	Hu,Ms,Rat	WB, ICC/IF, IHC-P
	<a href="#">GTX113454</a>	ERAB antibody [N1C3]	Rb pAb	Hu	WB, IHC-P
	<a href="#">GTX113455</a>	ERAB antibody [N2C3]	Rb pAb	Hu	WB, IHC-P
	<a href="#">GTX105167</a>	HADH antibody	Rb pAb	Hu,Ms,Rat	WB, ICC/IF, IHC-P, IP
	<a href="#">GTX118325</a>	HADH antibody	Rb pAb	Hu,Ms,Rat	WB, ICC/IF, IHC-P
	<a href="#">GTX101177</a>	HADHA antibody	Rb pAb	Hu,Ms,Rat	WB, ICC/IF, IHC-P
ACAA	<a href="#">GTX100302</a>	HADHB antibody [N1], N-term	Rb pAb	Hu	WB
	<a href="#">GTX114229</a>	ACAA1 antibody	Rb pAb	Hu,Ms	WB, ICC/IF, IHC-P
	<a href="#">GTX114230</a>	ACAA1 antibody	Rb pAb	Hu,Ms	WB, ICC/IF, IHC-P
	<a href="#">GTX115416</a>	ACAA2 antibody	Rb pAb	Hu	WB, ICC/IF
	<a href="#">GTX115417</a>	ACAA2 antibody	Rb pAb	Hu,Ms	WB, ICC/IF, IHC-P



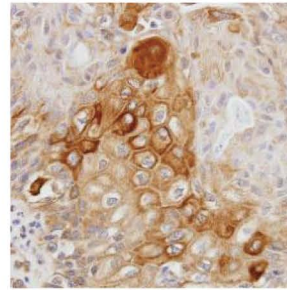
# Lypolysis Pathway



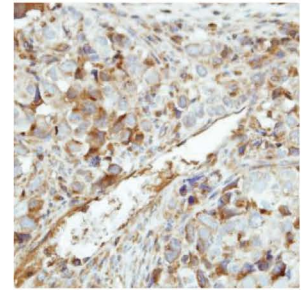
ATGL antibody [N1C1] (GTX109941)



Monoglyceride lipase antibody (GTX103517)



Glycerol kinase 2 antibody [N1C1] (GTX103519)

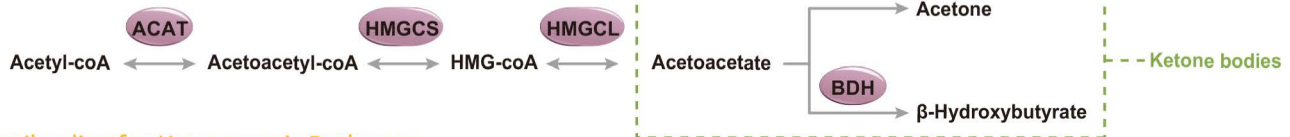


GK5 antibody (GTX107498)

## Antibodies for Lypolysis Pathway

	Cat. No.	Product Name	Clonality	Reactivity	Applications
ATGL	<a href="#">GTX59676</a>	ATGL antibody	Rb pAb	Hu,Ms,Rat	WB, IP, IHC
	<a href="#">GTX109941</a>	ATGL antibody [N1C1]	Rb pAb	Hu,Ms	WB
HSL	<a href="#">GTX33957</a>	HSL antibody	Rb pAb	Hu,Ms,Rat	WB, IHC-P
MGL	<a href="#">GTX103517</a>	Monoglyceride lipase antibody	Rb pAb	Hu,Ms,Rat	WB, IHC-P
	<a href="#">GTX88653</a>	Monoglyceride lipase antibody, Internal (near N-term)	Goat pAb	Hu,Ms	WB, IHC-P
Glycerol kinase	<a href="#">GTX102297</a>	Glycerol kinase antibody [N3C2], Internal	Rb pAb	Hu	WB, ICC/IF
	<a href="#">GTX107474</a>	Glycerol kinase antibody [N1N3-2]	Rb pAb	Hu	WB, ICC/IF
	<a href="#">GTX103519</a>	Glycerol kinase 2 antibody [N1C1]	Rb pAb	Hu	WB, ICC/IF, IHC-P
	<a href="#">GTX107563</a>	Glycerol kinase 2 antibody [N1C1-3]	Rb pAb	Hu	WB, IHC-P
	<a href="#">GTX107498</a>	GK5 antibody	Rb pAb	Hu	WB, IHC-P
GPD	<a href="#">GTX117910</a>	GPD1 antibody	Rb pAb	Hu,Rat	WB, ICC/IF, IHC-P
	<a href="#">GTX114447</a>	GPD2 antibody [N1N3]	Rb pAb	Hu	WB

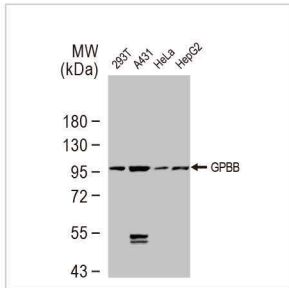
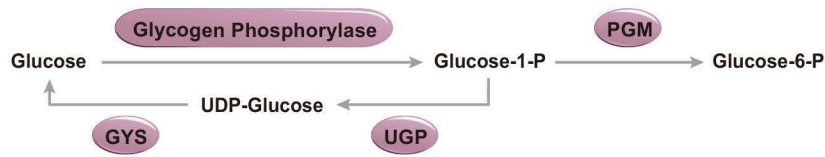
# Ketogenesis Pathway



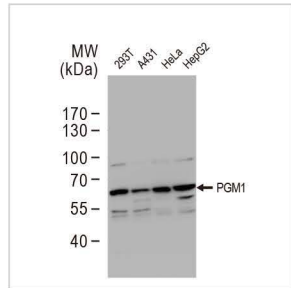
## Antibodies for Ketogenesis Pathway

	Cat. No.	Product Name	Clonality	Reactivity	Applications
ACAT	<a href="#">GTX102637</a>	ACAT1 antibody [N1N3]	Rb pAb	Hu,Ms	WB, ICC/IF, IHC-P
HMGCS	<a href="#">GTX112346</a>	HMGCS1 antibody	Rb pAb	Hu,Ms	WB, ICC/IF, IHC-P
	<a href="#">GTX128013</a>	HMGCS2 antibody	Rb pAb	Hu	WB, IHC-P
HMGCL	<a href="#">GTX114472</a>	HMGCL antibody [N2C3]	Rb pAb	Hu	WB, IHC-P
BDH	<a href="#">GTX83270</a>	BDH1 antibody [1A5]	Ms mAb	Hu,Ms	WB, IHC-P, ELISA

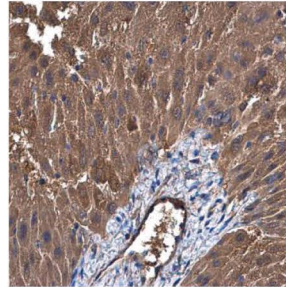
# Glycogenesis & Glycogenolysis Pathway



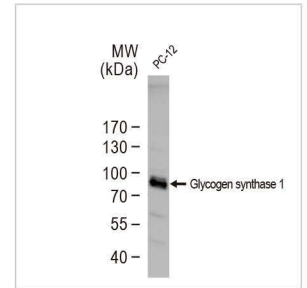
GPBB antibody  
([GTX104291](#))



PGM1 antibody  
([GTX110069](#))



UGP2 antibody [N3C3-2]  
([GTX107967](#))

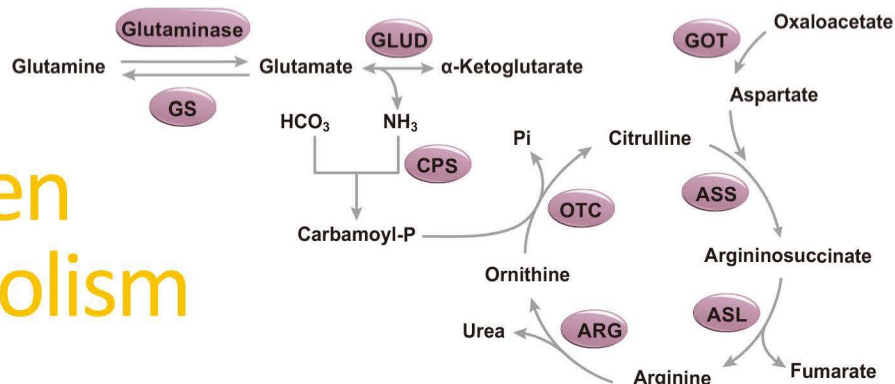


Glycogen synthase 1  
antibody ([GTX113453](#))

## Antibodies for Glycogenesis & Glycogenolysis Pathway

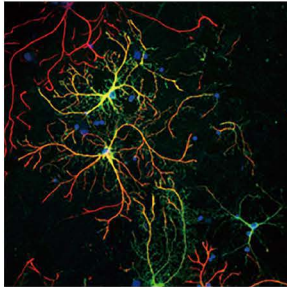
	Cat. No.	Product Name	Clonality	Reactivity	Applications
Glycogen phosphorylase	<a href="#">GTX104291</a>	GPBB antibody	Rb pAb	Hu, Ms	WB, IHC-P
	<a href="#">GTX114952</a>	GPBB antibody [N1N2], N-term	Rb pAb	Hu, Ms	WB
	<a href="#">GTX33448</a>	PYGL antibody	Rb pAb	Hu, Ms, Rat	WB, ICC/IF, IP
	<a href="#">GTX110411</a>	PYGM antibody [C1C3]	Rb pAb	Hu, Ms	WB, IHC-P
PGM	<a href="#">GTX110069</a>	PGM1 antibody	Rb pAb	Hu	WB, ICC/IF
	<a href="#">GTX119168</a>	PGM2 antibody [N1C2]	Rb pAb	Hu	WB
	<a href="#">GTX119169</a>	PGM2 antibody [C1C3]	Rb pAb	Hu	WB
	<a href="#">GTX114634</a>	PGM3 antibody [N1C1]	Rb pAb	Hu, Ms	WB, ICC/IF
UGP	<a href="#">GTX107967</a>	UGP2 antibody [N3C3-2]	Rb pAb	Hu, Ms	WB, ICC/IF, IHC-P
	<a href="#">GTX102684</a>	UGP2 antibody [N1C1]	Rb pAb	Hu	WB, IHC-P
GYS	<a href="#">GTX113453</a>	Glycogen synthase 1 antibody	Rb pAb	Hu, Rat	WB, IHC-P
	<a href="#">GTX22479</a>	Glycogen synthase 1 (phospho Ser641) antibody	Rb pAb	Hu, Ms	WB, IHC-P, ELISA




# Nitrogen Metabolism Pathway

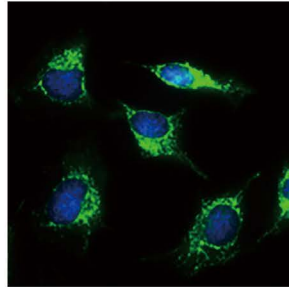




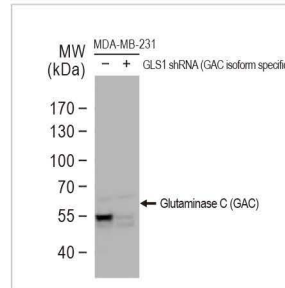
# Nitrogen Metabolism Pathway




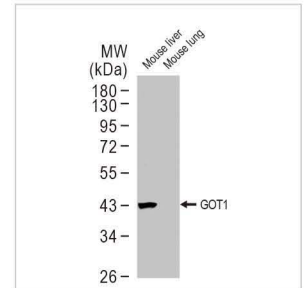
Glutamine synthetase antibody [GT1055] (GTX630654)   




GLUD antibody (GTX112361)



Glutaminase C (GAC) antibody (GTX131263)  

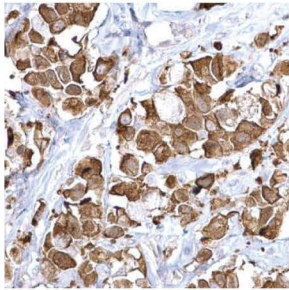


GOT1 antibody [GT638] (GTX632031) 

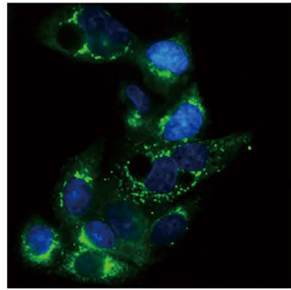
## Antibodies for Nitrogen Metabolism Pathway

	Cat. No.	Product Name	Clonality	Reactivity	Applications
GLUD	  <a href="#">GTX105765</a>	Glutamate Dehydrogenase antibody	Rb pAb	Hu,Ms,Rat	WB, ICC/IF, IHC-P, ELISA
	 <a href="#">GTX88164</a>	Glutamate Dehydrogenase antibody, Internal	Goat pAb	Hu,Ms,Rat	WB, ICC/IF, IHC-P
	 <a href="#">GTX112361</a>	GLUD1+2 antibody	Rb pAb	Hu,Ms,Rat	WB, ICC/IF, IHC-P
GOT	 <a href="#">GTX632031</a>	GOT1 antibody [GT638]	Ms mAb	Hu,Ms	WB
	 <a href="#">GTX632032</a>	GOT1 antibody [GT1342]	Ms mAb	Hu,Ms	WB, ICC/IF
	 <a href="#">GTX632033</a>	GOT1 antibody [GT1255]	Ms mAb	Hu,Ms	WB, ICC/IF
GOT2	  <a href="#">GTX101929</a>	GOT2 antibody	Rb pAb	Hu,Ms,Rat	WB, ICC/IF, IHC-P
	 <a href="#">GTX101930</a>	GOT2 antibody	Rb pAb	Hu,Ms,Rat	WB, ICC/IF, IHC-P
	 <a href="#">GTX101559</a>	GPT antibody [N1N3]	Rb pAb	Hu,Ms	WB
GPT	<a href="#">GTX112952</a>	GPT antibody [N2C2], Internal	Rb pAb	Hu	WB, IHC-P
CPS	<a href="#">GTX101401</a>	CAD antibody [C2C3], C-term	Rb pAb	Hu,Ms	WB, IHC-P
OTC	 <a href="#">GTX105140</a>	OTC antibody	Rb pAb	Hu,Ms	WB, IHC-P, IHC-Fr
ASS	<a href="#">GTX101344</a>	ASS1 antibody	Rb pAb	Hu	WB, IHC-P
ASL	 <a href="#">GTX109750</a>	ASL antibody	Rb pAb	Hu	WB, ICC/IF, IHC-P
	  <a href="#">GTX113629</a>	ASL antibody	Rb pAb	Hu,Ms	WB, ICC/IF, IHC-P
Arginase	   <a href="#">GTX109242</a>	Arginase 1 antibody	Rb pAb	Hu,Ms,Rat	WB, ICC/IF, IHC-P, IHC-Fr, FACS, IP, ELISA, Sandwich ELISA
	 <a href="#">GTX113131</a>	Arginase 1 antibody	Rb pAb	Hu,Ms,Rat	WB, ICC/IF, IHC-P, ELISA, IHC, Sandwich ELISA
	  <a href="#">GTX104036</a>	ARG2 antibody	Rb pAb	Hu,Ms,Rat	WB, IHC-P, IHC-Fr
GS	   <a href="#">GTX109121</a>	Glutamine synthetase antibody	Rb pAb	Hu,Ms,Rat	WB, ICC/IF, IHC-P, IHC-Fr, IP, IHC
	   <a href="#">GTX630654</a>	Glutamine synthetase antibody [GT1055]	Ms mAb	Hu,Ms,Rat	WB, ICC/IF, IHC-P, IHC-Fr
	  <a href="#">GTX630657</a>	Glutamine synthetase antibody [GT7711]	Ms mAb	Hu,Ms,Rat	WB, ICC/IF, IHC-Fr
Glutaminase	  <a href="#">GTX131263</a>	Glutaminase C (GAC) antibody	Rb pAb	Hu,Ms	WB, ICC/IF, IHC-P, IP
	 <a href="#">GTX132402</a>	Glutaminase C (GAC) antibody	Rb pAb	Hu	WB, ICC/IF, IHC-P, IP
	<a href="#">GTX632317</a>	Glutaminase C (GAC) antibody [GT3211]	Ms mAb	Hu,Ms	WB, ICC/IF, IHC-P
Asparagine synthetase	 <a href="#">GTX103569</a>	Asparagine synthetase antibody [N3C3]	Rb pAb	Hu	WB
	<a href="#">GTX114269</a>	Asparagine synthetase antibody	Rb pAb	Hu	WB, IHC-P
NOS	  <a href="#">GTX129058</a>	eNOS (phospho Ser1177) antibody	Rb pAb	Hu,Ms,Rat	WB, IHC-P
	  <a href="#">GTX129843</a>	eNOS antibody	Rb pAb	Hu,Rat	WB, ICC/IF
	  <a href="#">GTX130246</a>	iNOS antibody	Rb pAb	Ms,Rat	WB, ICC/IF, IHC-P

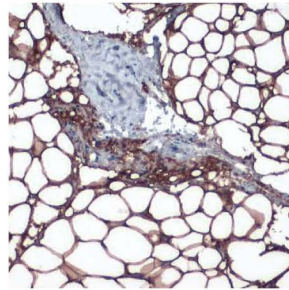
# Lipid Biosynthesis



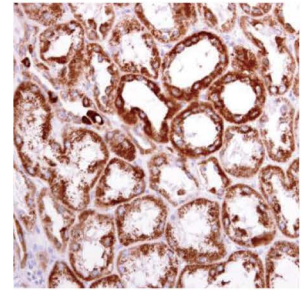
Fatty Acid Synthase antibody ([GTX109833](#))



Apolipoprotein E antibody ([GTX100053](#))



Perilipin 1 antibody ([GTX130139](#))



ACAT1 antibody ([GTX102637](#))



## Antibodies for Lipid Biosynthesis

	Cat. No.	Product Name	Clonality	Reactivity	Applications
GPAT	<a href="#">GTX85034</a>	GPAM antibody	Rb pAb	Hu,Ms,Rat	WB, IHC-P, ELISA
	<a href="#">GTX87708</a>	GPAT3 antibody	Rb pAb	Hu,Ms,Rat	WB, ICC/IF, IHC
AGPAT	<a href="#">GTX102081</a>	AGPAT1 antibody [N3C3]	Rb pAb	Hu	WB
	<a href="#">GTX81092</a>	AGPAT3 antibody, Internal	Rb pAb	Hu	WB, IHC-P, FACS
	<a href="#">GTX87835</a>	AGPAT4 antibody	Rb pAb	Hu	WB
	<a href="#">GTX122943</a>	AGPAT5 antibody [N1C2]	Rb pAb	Hu	WB
	<a href="#">GTX106759</a>	LYCAT antibody	Rb pAb	Hu	WB
DGAT	<a href="#">GTX89134</a>	DGAT2 antibody, Internal	Goat pAb	Hu	IHC-P, FACS, ELISA
	<a href="#">GTX02814</a>	DGAT2 antibody	Rb pAb	Rat	WB
MOGAT	<a href="#">GTX45890</a>	MOGAT1 antibody, C-term	Rb pAb	Hu	WB
	<a href="#">GTX117145</a>	MOGAT2 antibody	Rb pAb	Hu	WB
ACAT	<a href="#">GTX102637</a>	ACAT1 antibody [N1N3]	Rb pAb	Hu,Ms	WB, ICC/IF, IHC-P
	<a href="#">GTX84968</a>	ACAT2 antibody [1B7]	Ms mAb	Hu,Rat,Dog,Mk	WB, ICC/IF, IHC-P, FACS
ACC	<a href="#">GTX132081</a>	Acetyl-CoA Carboxylase 1 antibody	Rb pAb	Hu,Ms,Rat	WB, ICC/IF, IHC-P
	<a href="#">GTX33608</a>	Acetyl-CoA Carboxylase 1 antibody [RM232]	Rb mAb	Hu	WB, IHC-P
HMGCS	<a href="#">GTX112346</a>	HMGCS1 antibody	Rb pAb	Hu,Ms	WB, ICC/IF, IHC-P
	<a href="#">GTX128013</a>	HMGCS2 antibody	Rb pAb	Hu	WB, IHC-P
HMGCR	<a href="#">GTX02859</a>	HMGCR antibody [GT1262]	Rb RecAb	Hu,Ms,Rat	WB
	<a href="#">GTX88456</a>	HMGCR antibody, Internal	Goat pAb	Hu,Ms	WB
3-Ketoacyl-ACP synthase	<a href="#">GTX123463</a>	OXSM antibody	Rb pAb	Hu,Ms,Rat	WB, IHC-P
	<a href="#">GTX123464</a>	OXSM antibody	Rb pAb	Hu,Ms	WB, IHC-P
	<a href="#">GTX124011</a>	OXSM antibody	Rb pAb	Hu	WB, IHC-P
Fatty acid synthase	<a href="#">GTX109833</a>	Fatty Acid Synthase antibody [N1], N-term	Rb pAb	Hu,Ms,Rat	WB, ICC/IF, IHC-P, IHC-Fr, IP
	<a href="#">GTX110470</a>	Fatty Acid Synthase antibody [N1N2], N-term	Rb pAb	Hu,Ms	WB, ICC/IF, IHC-P, IP
	<a href="#">GTX629628</a>	Fatty Acid Synthase antibody [GT237]	Ms mAb	Hu,Ms,Rat	WB, IHC-P
	<a href="#">GTX629762</a>	Fatty Acid Synthase antibody [GT556]	Ms mAb	Hu,Ms,Rat	WB, ICC/IF, IHC-P
lipin	<a href="#">GTX107992</a>	Lipin 1 antibody [C3], C-term	Rb pAb	Hu	WB, ICC/IF, IHC-P
	<a href="#">GTX115676</a>	Lipin 1 antibody [N3C2], Internal	Rb pAb	Hu,Ms	WB
	<a href="#">GTX130139</a>	Perilipin 1 antibody	Rb pAb	Ms	WB, IHC-P



## Antibodies for Lipid Biosynthesis

	Cat. No.	Product Name	Clonality	Reactivity	Applications
Apolipoprotein	<a href="#">GTX112692</a>	Apolipoprotein A1 antibody	Rb pAb	Hu,Ms,Rat	WB, ICC/IF, IHC-P
	<a href="#">GTX83043</a>	Apolipoprotein A1 antibody [5F4F5]	Ms mAb	Hu	WB, ELISA
	<a href="#">GTX89166</a>	Apolipoprotein A4 antibody, Internal	Goat pAb	Hu	WB, IHC-P
	<a href="#">GTX83299</a>	Apolipoprotein A5 antibody [1G5G9 (c),2G1H11G9B3]	Ms mAb	Hu	WB, ELISA
	<a href="#">GTX60445</a>	Apolipoprotein B antibody [6G6]	Ms mAb	Hu	WB, ICC/IF, FACS, ELISA
	<a href="#">GTX129994</a>	Apolipoprotein CIII antibody	Rb pAb	Hu	WB, ICC/IF
	<a href="#">GTX101306</a>	Apolipoprotein D antibody	Rb pAb	Hu,Ms,Rat	WB, ICC/IF, IHC-P
	<a href="#">GTX100053</a>	Apolipoprotein E antibody [C2C3], C-term	Rb pAb	Hu	WB, ICC/IF, IHC-P, IP, ELISA, Sandwich ELISA
	<a href="#">GTX101456</a>	Apolipoprotein E antibody	Rb pAb	Hu	WB, ICC/IF, IHC-P
	<a href="#">GTX113627</a>	Apolipoprotein H antibody [N1C2]	Rb pAb	Hu,Ms,Rat	WB, IHC-P

# Pentose Phosphate Pathway



## Antibodies for Pentose Phosphate Pathway

	Cat. No.	Product Name	Clonality	Reactivity	Applications
TALDO	<a href="#">GTX102076</a>	Transaldolase antibody	Rb pAb	Hu,Ms	WB, IHC-P
	<a href="#">GTX114956</a>	Transaldolase antibody [N2C3]	Rb pAb	Hu	WB, ICC/IF
G6PD	<a href="#">GTX101212</a>	G6PD antibody	Rb pAb	Hu	WB, IHC-P
	<a href="#">GTX101218</a>	G6PD antibody [N3C3]	Rb pAb	Hu,Ms,Rat	WB, IHC-P
H6PD	<a href="#">GTX113186</a>	G6PD antibody [N2C1], Internal	Rb pAb	Hu	WB, IHC-P, ELISA, Sandwich ELISA
	<a href="#">GTX101500</a>	H6PD antibody [N2N3]	Rb pAb	Hu,Ms	WB, IHC-P
PGLS	<a href="#">GTX84395</a>	H6PD antibody [2A7]	Ms mAb	Hu,Mk	WB, ICC/IF, IHC-P, FACS
	<a href="#">GTX120327</a>	PGLS antibody	Rb pAb	Hu,Ms	WB, ICC/IF, IHC-P
6PGD	<a href="#">GTX101703</a>	PGD antibody [N1N3]	Rb pAb	Hu,Ms	WB, ICC/IF, IHC-P
	<a href="#">GTX101704</a>	PGD antibody	Rb pAb	Hu,Ms	WB, ICC/IF, IHC-P
RPI	<a href="#">GTX45278</a>	RPIA antibody, N-term	Rb pAb	Hu	WB

## official distributor

SZABO-SCANDIC HandelsgmbH  
Quellenstraße 110, A-1100 Wien  
T. +43(0)1 489 3961-0  
F. +43(0)1 489 3961-7  
mail@szabo-scandic.com  
www.szabo-scandic.com



# SZABO SCANDIC

Metabolism is the set of chemical reactions involved in maintaining the living state of cells and the organism. These chemical reactions are organized into metabolic pathways and can be divided into two categories: catabolism, the breakdown of organic molecules such as carbohydrates, lipids and proteins with the release of energy, and anabolism, the synthesis of complex molecules such as proteins and nucleic acids from simpler compounds that generally requires energy. Metabolic pathways are evolutionarily highly conserved between species. Disorders of these processes may result from nutritional deficiencies, disease in metabolic organs such as the liver and pancreas, or genetic mutations. The human and economic impact of conditions such as diabetes mellitus, hyperlipidemia, and osteoporosis is staggering, so additional research is essential for developing preventative approaches in conjunction with therapeutic agents that can minimize the long-term effects of these progressive maladies.



### International

Tel 886.3.6208988  
Fax 886.3.6208989  
Address 6F-2, No. 89, Dongmei Rd., Hsinchu 300, Taiwan (R.O.C.)  
E-mail [international@genetex.com](mailto:international@genetex.com)

### USA

Toll-free 1.877.GeneTex(1.877.436.3839)  
Fax 1.949.309.2888  
Address 2456 Alton Parkway, Irvine, CA 92606 USA  
E-mail [info@genetex.com](mailto:info@genetex.com)

