



SZABO SCANDIC

Part of Europa Biosite

Produktinformation



Forschungsprodukte & Biochemikalien



Zellkultur & Verbrauchsmaterial



Diagnostik & molekulare Diagnostik



Laborgeräte & Service

Weitere Information auf den folgenden Seiten!
See the following pages for more information!



Lieferung & Zahlungsart

siehe unsere [Liefer- und Versandbedingungen](#)

Zuschläge

- Mindermengenzuschlag
- Trockeneiszuschlag
- Gefahrgutzuschlag
- Expressversand

SZABO-SCANDIC HandelsgmbH

Quellenstraße 110, A-1100 Wien

T. +43(0)1 489 3961-0

F. +43(0)1 489 3961-7

mail@szabo-scandic.com

www.szabo-scandic.com

[linkedin.com/company/szaboscandic](https://www.linkedin.com/company/szaboscandic) 

BCL3 (Human) IP-WB Antibody Pair

Catalog # : H00000602-PW2

規格 : [1 Set]

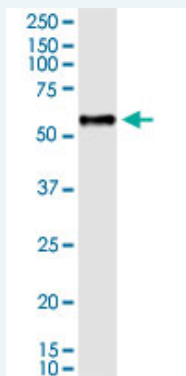
[List All](#)

Specification

Product Description: This IP-WB antibody pair set comes with one antibody for immunoprecipitation and another to detect the precipitated protein in western blot.

Reactivity: Human

Quality Control Testing: Immunoprecipitation-Western Blot (IP-WB)



Immunoprecipitation of BCL3 transfected lysate using rabbit polyclonal anti-BCL3 and Protein A Magnetic Bead ([U0007](#)), and immunoblotted with mouse purified polyclonal anti-BCL3.

Supplied Product: Antibody pair set content:
1. Antibody pair for IP: rabbit polyclonal anti-BCL3 (300 ul)
2. Antibody pair for WB: mouse purified polyclonal anti-BCL3 (50 ug)

Storage Instruction: Store reagents of the antibody pair set at -20°C or lower. Please aliquot to avoid repeated freeze thaw cycle. Reagents should be returned to -20°C storage immediately after use.

Publication Reference

- [Fucose-specific DC-SIGN signalling directs T helper cell type-2 responses via IKKε- and CYLD-dependent Bcl3 activation.](#)
Gringhuis SI, Kaptein TM, Wevers BA, Mesman AW, Geijtenbeek TB Nat Commun. 2014 May 28;5:3898. doi: 10.1038/ncomms4898.

Applications

Immunoprecipitation-Western Blot

 [Protocol Download](#)

Gene Information

Entrez GeneID: [602](#)

Gene Name: BCL3

Gene Alias: BCL4,D19S37

Gene Description: B-cell CLL/lymphoma 3

Application Image

Immunoprecipitation-Western Blot

Omim ID: [109560](#)

Gene Ontology: [Hyperlink](#)

Gene Summary: This gene is a proto-oncogene candidate. It is identified by its translocation into the immunoglobulin alpha-locus in some cases of B-cell leukemia. The protein encoded by this gene contains seven ankyrin repeats, which are most closely related to those found in I kappa B proteins. This protein functions as a transcriptional co-activator that activates through its association with NF-kappa B homodimers. The expression of this gene can be induced by NF-kappa B, which forms a part of the autoregulatory loop that controls the nuclear residence of p50 NF-kappa B. [provided by RefSeq]

Other Designations: B-cell leukemia/lymphoma 3,B-cell lymphoma 3-encoded protein,chronic lymphatic leukemia protein

Related Disease

[Cardiovascular Diseases](#) [Cleft Lip](#) [Cleft Palate](#) [Crohn Disease](#) [Disease Models, Animal](#)
[Genetic Predisposition to Disease](#)

[服務條款](#) | [隱私權政策](#) | [著作及商標](#) | [網站地圖](#)

©2016 亞諾法生技股份有限公司 Abnova Corporation. 版權所有.