



SZABO SCANDIC

Part of Europa Biosite

Produktinformation



Forschungsprodukte & Biochemikalien



Zellkultur & Verbrauchsmaterial



Diagnostik & molekulare Diagnostik



Laborgeräte & Service

Weitere Information auf den folgenden Seiten!
See the following pages for more information!



Lieferung & Zahlungsart

siehe unsere [Liefer- und Versandbedingungen](#)

Zuschläge

- Mindermengenzuschlag
- Trockeneiszuschlag
- Gefahrgutzuschlag
- Expressversand

SZABO-SCANDIC HandelsgmbH

Quellenstraße 110, A-1100 Wien

T. +43(0)1 489 3961-0

F. +43(0)1 489 3961-7

mail@szabo-scandic.com

www.szabo-scandic.com

[linkedin.com/company/szaboscandic](https://www.linkedin.com/company/szaboscandic) 

BST1 (Human) IP-WB Antibody Pair

Catalog # : H00000683-PW1

規格 : [1 Set]

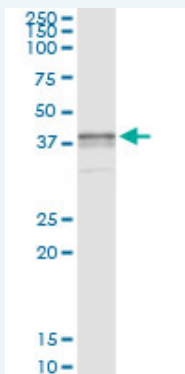
[List All](#)

Specification

Product Description: This IP-WB antibody pair set comes with one antibody for immunoprecipitation and another to detect the precipitated protein in western blot.

Reactivity: Human

Quality Control Testing: Immunoprecipitation-Western Blot (IP-WB)



Immunoprecipitation of BST1 transfected lysate using mouse monoclonal anti-BST1 and Protein A Magnetic Bead ([U000Z](#)), and immunoblotted with rabbit polyclonal anti-BST1.

Supplied Product: Antibody pair set content:
1. Antibody pair for IP: mouse monoclonal anti-BST1 (300 ug)
2. Antibody pair for WB: rabbit polyclonal anti-BST1 (50 ul)

Storage Instruction: Store reagents of the antibody pair set at -20°C or lower. Please aliquot to avoid repeated freeze thaw cycle. Reagents should be returned to -20°C storage immediately after use.

MSDS:  [Download](#)

Applications

Immunoprecipitation-Western Blot

 [Protocol Download](#)

Gene Information

Entrez GeneID: [683](#)

Gene Name: BST1

Gene Alias: CD157

Gene Description: bone marrow stromal cell antigen 1

Omim ID: [600387](#)

Gene Ontology: [Hyperlink](#)

Application Image

Immunoprecipitation-Western Blot

Gene Summary: Bone marrow stromal cell antigen-1 is a stromal cell line-derived glycosylphosphatidylinositol-anchored molecule that facilitates pre-B-cell growth. The deduced amino acid sequence exhibits 33% similarity with CD38. BST1 expression is enhanced in bone marrow stromal cell lines derived from patients with rheumatoid arthritis. The polyclonal B-cell abnormalities in rheumatoid arthritis may be, at least in part, attributed to BST1 overexpression in the stromal cell population. [provided by RefSeq]

Other -
Designations:

Gene Pathway

[Calcium signaling pathway](#) [Metabolic pathways](#) [Nicotinate and nicotinamide metabolism](#)

Related Disease

[Genetic Predisposition to Disease](#) [Kidney Failure, Chronic](#) [Parkinson Disease](#)

[服務條款](#) | [隱私權政策](#) | [著作及商標](#) | [網站地圖](#)

©2016 亞諾法生技股份有限公司 Abnova Corporation. 版權所有.