



SZABO SCANDIC

Part of Europa Biosite

Produktinformation



Forschungsprodukte & Biochemikalien



Zellkultur & Verbrauchsmaterial



Diagnostik & molekulare Diagnostik



Laborgeräte & Service

Weitere Information auf den folgenden Seiten!
See the following pages for more information!



Lieferung & Zahlungsart

siehe unsere [Liefer- und Versandbedingungen](#)

Zuschläge

- Mindermengenzuschlag
- Trockeneiszuschlag
- Gefahrgutzuschlag
- Expressversand

SZABO-SCANDIC HandelsgmbH

Quellenstraße 110, A-1100 Wien

T. +43(0)1 489 3961-0

F. +43(0)1 489 3961-7

mail@szabo-scandic.com

www.szabo-scandic.com

[linkedin.com/company/szaboscandic](https://www.linkedin.com/company/szaboscandic) 

BUB1 (Human) Matched Antibody Pair

Catalog # : H00000699-AP22

規格 : [1 Set]

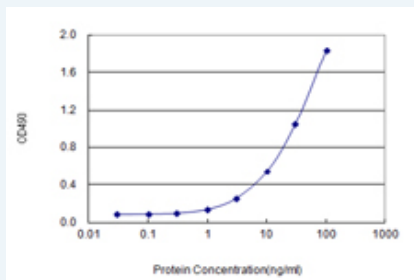
[List All](#)

Specification

Product Description: This antibody pair set comes with matched antibody pair to detect and quantify protein level of human BUB1.

Reactivity: Human

Quality Control Testing: Standard curve using recombinant protein (H00000699-P01) as an analyte.



Sandwich ELISA detection sensitivity ranging from 0.3 ng/ml to 100 ng/ml.

Supplied Product: Antibody pair set content:
 1. Capture antibody: rabbit MaxPab® affinity purified polyclonal anti-BUB1 (100 ug)
 2. Detection antibody: mouse purified polyclonal anti-BUB1 (20 ug)
 *Reagents are sufficient for at least 1-2 x 96 well plates using recommended protocols.

Storage Instruction: Store reagents of the antibody pair set at -20°C or lower. Please aliquot to avoid repeated freeze thaw cycle. Reagents should be returned to -20°C storage immediately after use.

Applications

ELISA Pair (Recombinant protein)

 [Protocol Download](#)

Gene Information

Entrez GeneID: [699](#)

Gene Name: BUB1

Gene Alias: BUB1A,BUB1L,hBUB1

Gene Description: budding uninhibited by benzimidazoles 1 homolog (yeast)

Omim ID: [602452](#)

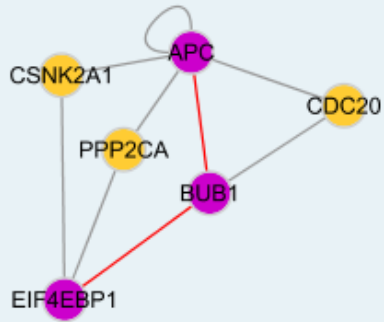
Gene Ontology: [Hyperlink](#)

Gene Summary: This gene encodes a kinase involved in spindle checkpoint function. The kinase functions in part by phosphorylating a member of the mitotic

checkpoint complex and activating the spindle checkpoint. Mutations in this gene have been associated with aneuploidy and several forms of cancer. [provided by RefSeq]

Other Designations: BUB1 budding uninhibited by benzimidazoles 1 homolog, budding uninhibited by benzimidazoles 1, mitotic spindle checkpoint kinase, putative serine/threonine-protein kinase

Interactome



Gene Pathway

[Cell cycle](#)

Related Disease

[Alcoholism](#) [Breast cancer](#) [Breast Neoplasms](#) [Carcinoma, Ductal, Breast](#) [Conduct Disorder](#) [Genetic Predisposition to Disease](#) [Ovarian Neoplasms](#)

[服務條款](#) | [隱私權政策](#) | [著作及商標](#) | [網站地圖](#)

©2016 亞諾法生技股份有限公司 Abnova Corporation. 版權所有.