



SZABO SCANDIC

Part of Europa Biosite

Produktinformation



Forschungsprodukte & Biochemikalien



Zellkultur & Verbrauchsmaterial



Diagnostik & molekulare Diagnostik



Laborgeräte & Service

Weitere Information auf den folgenden Seiten!
See the following pages for more information!



Lieferung & Zahlungsart

siehe unsere [Liefer- und Versandbedingungen](#)

Zuschläge

- Mindermengenzuschlag
- Trockeneiszuschlag
- Gefahrgutzuschlag
- Expressversand

SZABO-SCANDIC HandelsgmbH

Quellenstraße 110, A-1100 Wien

T. +43(0)1 489 3961-0

F. +43(0)1 489 3961-7

mail@szabo-scandic.com

www.szabo-scandic.com

[linkedin.com/company/szaboscandic](https://www.linkedin.com/company/szaboscandic) 

SERPING1 (Human) Matched Antibody Pair

Catalog # : H00000710-AP51

規格 : [1 Set]

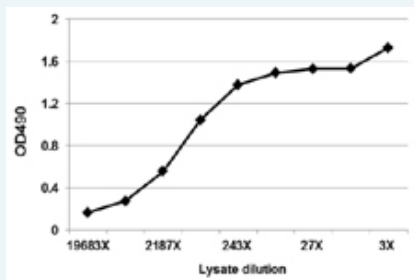
[List All](#)

Specification

Product Description: This antibody pair set comes with matched antibody pair to detect and quantify protein level of human SERPING1.

Reactivity: Human

Quality Control Testing: Standard curve using SERPING1 293T overexpression lysate (non-denatured) as an analyte.



Sandwich ELISA detection sensitivity ranging from approximately 19683x to 9x dilution of the SERPING1 293T overexpression lysate (non-denatured).

Supplied Product: Antibody pair set content:
 1. Capture antibody: mouse monoclonal anti-SERPING1, IgG2a Kappa (100 ug)
 2. Detection antibody: rabbit purified polyclonal anti-SERPING1 (50 ug)
 *Reagents are sufficient for at least 3-5 x 96 well plates using recommended protocols.

Storage Instruction: Store reagents of the antibody pair set at -20°C or lower. Please aliquot to avoid repeated freeze thaw cycle. Reagents should be returned to -20°C storage immediately after use.

MSDS:  [Download](#)

Applications

ELISA Pair (Transfected lysate)

 [Protocol Download](#)

Gene Information

Entrez GeneID: [710](#)

Gene Name: SERPING1

Gene Alias: C1IN,C1INH,C1NH,HAE1,HAE2

Gene Description: serpin peptidase inhibitor, clade G (C1 inhibitor), member 1

Omim ID: [106100](#), [606860](#)

Gene Ontology: [Hyperlink](#)

Application Image

ELISA Pair (Transfected lysate)

Gene Summary: This gene encodes a highly glycosylated plasma protein involved in the regulation of the complement cascade. Its protein inhibits activated C1r and C1s of the first complement component and thus regulates complement activation. Deficiency of this protein is associated with hereditary angioneurotic oedema (HANE). Alternative splicing results in multiple transcript variants encoding the same isoform. [provided by RefSeq]

Other complement component 1 inhibitor,plasma protease C1
Designations: inhibitor,serine/cysteine proteinase inhibitor clade G member 1

Gene Pathway

[Complement and coagulation cascades](#)

Related Disease

[Acute Disease](#) [Birth Weight](#) [Choroid Diseases](#) [Choroidal Neovascularization](#)
[Genetic Predisposition to Disease](#) [Glioblastoma](#) [Glioma](#) [Kidney Failure, Chronic](#) [Leukemia](#)
[Leukemia, Myeloid, Acute](#) [Lymphoma, Non-Hodgkin](#) [Macular Degeneration](#)
[Meningeal Neoplasms](#) [Meningioma](#) [Meningococcal Infections](#) [Otitis Media](#)
[Ovarian Neoplasms](#) [Recurrence](#)

[服務條款](#) | [隱私權政策](#) | [著作及商標](#) | [網站地圖](#)

©2016 亞諾法生技股份有限公司 Abnova Corporation. 版權所有.