



SZABO SCANDIC

Part of Europa Biosite

Produktinformation



Forschungsprodukte & Biochemikalien



Zellkultur & Verbrauchsmaterial



Diagnostik & molekulare Diagnostik



Laborgeräte & Service

Weitere Information auf den folgenden Seiten!
See the following pages for more information!



Lieferung & Zahlungsart

siehe unsere [Liefer- und Versandbedingungen](#)

Zuschläge

- Mindermengenzuschlag
- Trockeneiszuschlag
- Gefahrgutzuschlag
- Expressversand

SZABO-SCANDIC HandelsgmbH

Quellenstraße 110, A-1100 Wien

T. +43(0)1 489 3961-0

F. +43(0)1 489 3961-7

mail@szabo-scandic.com

www.szabo-scandic.com

[linkedin.com/company/szaboscandic](https://www.linkedin.com/company/szaboscandic) 

CAT (Human) Matched Antibody Pair

Catalog # : H00000847-AP51

規格 : [1 Set]

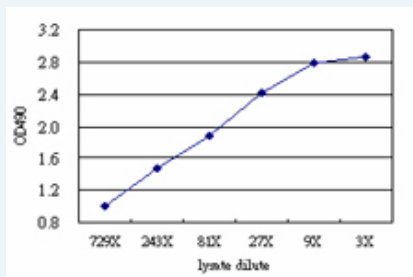
[List All](#)

Specification

Product Description: This antibody pair set comes with matched antibody pair to detect and quantify protein level of human CAT.

Reactivity: Human

Quality Control Testing: Standard curve using CAT 293T overexpression lysate (non-denatured) as an analyte.



Sandwich ELISA detection sensitivity ranging from approximately 243x to 3x dilution of the CAT 293T overexpression lysate (non-denatured).

Supplied Product: Antibody pair set content:
 1. Capture antibody: mouse monoclonal anti-CAT (100 ug)
 2. Detection antibody: rabbit purified polyclonal anti-CAT (50 ug)
 *Reagents are sufficient for at least 3-5 x 96 well plates using recommended protocols.

Storage Instruction: Store reagents of the antibody pair set at -20°C or lower. Please aliquot to avoid repeated freeze thaw cycle. Reagents should be returned to -20°C storage immediately after use.

MSDS:  [Download](#)

Applications

ELISA Pair (Transfected lysate)

 [Protocol Download](#)

Gene Information

Entrez GeneID: [847](#)

Gene Name: CAT

Gene Alias: MGC138422,MGC138424

Gene Description: catalase

Omim ID: [115500](#)

Gene Ontology: [Hyperlink](#)

Application Image

ELISA Pair (Transfected lysate)

Other -
Designations:

Gene Pathway

[Amyotrophic lateral sclerosis \(ALS\)](#) [Metabolic pathways](#) [Methane metabolism](#)
[Tryptophan metabolism](#)

Related Disease

[Absenteeism](#) [Acute Disease](#) [Albuminuria](#) [Alcoholism](#) [Alzheimer Disease](#) [Alzheimer disease](#)
[Arsenic Poisoning](#) [Arthritis, Rheumatoid](#) [Asbestosis](#) [Asthma](#) [Asthma](#) [Brain Neoplasms](#)
[Breast cancer](#) [Breast Neoplasms](#) [Carcinoma, Basal Cell](#) [Carcinoma, Ductal, Breast](#)
[Carcinoma, Hepatocellular](#) [Carcinoma, Lobular](#) [Carcinoma, Squamous Cell](#)

[... see more](#)

[服務條款](#) | [隱私權政策](#) | [著作及商標](#) | [網站地圖](#)

©2016 亞諾法生技股份有限公司 Abnova Corporation. 版權所有.