



# SZABO SCANDIC

Part of Europa Biosite

## Produktinformation



Forschungsprodukte & Biochemikalien



Zellkultur & Verbrauchsmaterial



Diagnostik & molekulare Diagnostik



Laborgeräte & Service

Weitere Information auf den folgenden Seiten!  
See the following pages for more information!



### Lieferung & Zahlungsart

siehe unsere [Liefer- und Versandbedingungen](#)

### Zuschläge

- Mindermengenzuschlag
- Trockeneiszuschlag
- Gefahrgutzuschlag
- Expressversand

### SZABO-SCANDIC HandelsgmbH

Quellenstraße 110, A-1100 Wien

T. +43(0)1 489 3961-0

F. +43(0)1 489 3961-7

[mail@szabo-scandic.com](mailto:mail@szabo-scandic.com)

[www.szabo-scandic.com](http://www.szabo-scandic.com)

[linkedin.com/company/szaboscandic](https://www.linkedin.com/company/szaboscandic) 

## CBL (Human) Matched Antibody Pair

Catalog # : H00000867-AP11

規格 : [ 1 Set ]

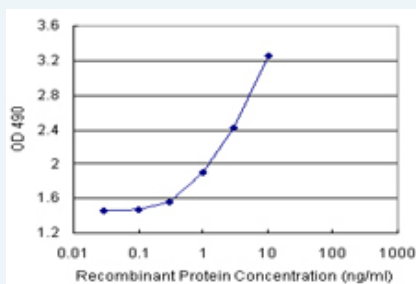
[List All](#)

### Specification

**Product Description:** This antibody pair set comes with matched antibody pair to detect and quantify protein level of human CBL.

**Reactivity:** Human

**Quality Control Testing:** Standard curve using recombinant protein ( H00000867-P01 ) as an analyte.



Sandwich ELISA detection sensitivity ranging from 0.03 ng/ml to 100 ng/ml.


**Supplied Product:** Antibody pair set content:  
 1. Capture antibody: rabbit MaxPab® affinity purified polyclonal anti-CBL (100 ug)  
 2. Detection antibody: mouse monoclonal anti-CBL, IgG1 Kappa (20 ug)  
 \*Reagents are sufficient for at least 1-2 x 96 well plates using recommended protocols.

**Storage Instruction:** Store reagents of the antibody pair set at -20°C or lower. Please aliquot to avoid repeated freeze thaw cycle. Reagents should be returned to -20°C storage immediately after use.

**MSDS:**  [Download](#)

### Applications

ELISA Pair (Recombinant protein)

 [Protocol Download](#)

### Gene Information

**Entrez GeneID:** [867](#)

**Gene Name:** CBL

**Gene Alias:** C-CBL,CBL2,RNF55

**Gene Description:** Cas-Br-M (murine) ecotropic retroviral transforming sequence

**Omim ID:** [165360](#)

**Gene Ontology:** [Hyperlink](#)

### Application Image

ELISA Pair (Recombinant protein)

**Gene Summary:** The cbl oncogene was first identified as part of a transforming retrovirus which induces mouse pre-B and pro-B cell lymphomas. As an adaptor protein for receptor protein-tyrosine kinases, it positively regulates receptor protein-tyrosine kinase ubiquitination in a manner dependent upon its variant SH2 and RING finger domains. Ubiquitination of receptor protein-tyrosine kinases terminates signaling by marking active receptors for degradation. [provided by RefSeq]

**Other** oncogene CBL2

**Designations:**

### Gene Pathway

[Chronic myeloid leukemia](#) [Endocytosis](#) [ErbB signaling pathway](#) [Insulin signaling pathway](#) [Jak-STAT signaling pathway](#) [Pathways in cancer](#) [T cell receptor signaling pathway](#) [Ubiquitin mediated proteolysis](#)

### Related Disease

[Diabetes Mellitus, Type 2](#) [Disease Progression](#) [Genetic Predisposition to Disease](#) [Leukemia, Myelomonocytic, Chronic](#) [Tobacco Use Disorder](#)

[服務條款](#) | [隱私權政策](#) | [著作及商標](#) | [網站地圖](#)

©2016 亞諾法生技股份有限公司 Abnova Corporation. 版權所有.