



SZABO SCANDIC

Part of Europa Biosite

Produktinformation



Forschungsprodukte & Biochemikalien



Zellkultur & Verbrauchsmaterial



Diagnostik & molekulare Diagnostik



Laborgeräte & Service

Weitere Information auf den folgenden Seiten!
See the following pages for more information!



Lieferung & Zahlungsart

siehe unsere [Liefer- und Versandbedingungen](#)

Zuschläge

- Mindermengenzuschlag
- Trockeneiszuschlag
- Gefahrgutzuschlag
- Expressversand

SZABO-SCANDIC HandelsgmbH

Quellenstraße 110, A-1100 Wien

T. +43(0)1 489 3961-0

F. +43(0)1 489 3961-7

mail@szabo-scandic.com

www.szabo-scandic.com

[linkedin.com/company/szaboscandic](https://www.linkedin.com/company/szaboscandic) 

CBL (Human) IP-WB Antibody Pair

Catalog # : H00000867-PW1

規格 : [1 Set]

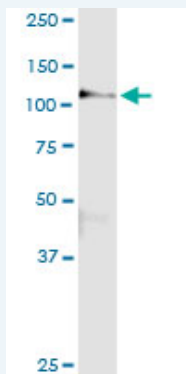
List All

Specification

Product Description: This IP-WB antibody pair set comes with one antibody for immunoprecipitation and another to detect the precipitated protein in western blot.

Reactivity: Human

Quality Control Testing: Immunoprecipitation-Western Blot (IP-WB)



Immunoprecipitation of CBL transfected lysate using rabbit polyclonal anti-CBL and Protein A Magnetic Bead ([U0007](#)), and immunoblotted with mouse polyclonal anti-CBL.

Supplied Product: Antibody pair set content:
1. Antibody pair for IP: rabbit polyclonal anti-CBL (300 ul)
2. Antibody pair for WB: mouse polyclonal anti-CBL (50 ul)

Storage Instruction: Store reagents of the antibody pair set at -20°C or lower. Please aliquot to avoid repeated freeze thaw cycle. Reagents should be returned to -20°C storage immediately after use.

MSDS:  [Download](#)

Applications

Immunoprecipitation-Western Blot

 [Protocol Download](#)

Gene Information

Entrez GeneID: [867](#)

Gene Name: CBL

Gene Alias: C-CBL,CBL2,RNF55

Gene Description: Cas-Br-M (murine) ecotropic retroviral transforming sequence

Omim ID: [165360](#)

Gene Ontology: [Hyperlink](#)

Application Image

Immunoprecipitation-Western Blot

Gene Summary: The cbl oncogene was first identified as part of a transforming retrovirus which induces mouse pre-B and pro-B cell lymphomas. As an adaptor protein for receptor protein-tyrosine kinases, it positively regulates receptor protein-tyrosine kinase ubiquitination in a manner dependent upon its variant SH2 and RING finger domains. Ubiquitination of receptor protein-tyrosine kinases terminates signaling by marking active receptors for degradation. [provided by RefSeq]

Other oncogene CBL2

Designations:

Gene Pathway

[Chronic myeloid leukemia](#) [Endocytosis](#) [ErbB signaling pathway](#) [Insulin signaling pathway](#) [Jak-STAT signaling pathway](#) [Pathways in cancer](#) [T cell receptor signaling pathway](#) [Ubiquitin mediated proteolysis](#)

Related Disease

[Diabetes Mellitus, Type 2](#) [Disease Progression](#) [Genetic Predisposition to Disease](#) [Leukemia, Myelomonocytic, Chronic](#) [Tobacco Use Disorder](#)

[服務條款](#) | [隱私權政策](#) | [著作及商標](#) | [網站地圖](#)

©2016 亞諾法生技股份有限公司 Abnova Corporation. 版權所有.