



SZABO SCANDIC

Part of Europa Biosite

Produktinformation



Forschungsprodukte & Biochemikalien



Zellkultur & Verbrauchsmaterial



Diagnostik & molekulare Diagnostik



Laborgeräte & Service

Weitere Information auf den folgenden Seiten!
See the following pages for more information!



Lieferung & Zahlungsart

siehe unsere [Liefer- und Versandbedingungen](#)

Zuschläge

- Mindermengenzuschlag
- Trockeneiszuschlag
- Gefahrgutzuschlag
- Expressversand

SZABO-SCANDIC HandelsgmbH

Quellenstraße 110, A-1100 Wien

T. +43(0)1 489 3961-0

F. +43(0)1 489 3961-7

mail@szabo-scandic.com

www.szabo-scandic.com

[linkedin.com/company/szaboscandic](https://www.linkedin.com/company/szaboscandic) 

CD19 (Human) Matched Antibody Pair

Catalog # : H00000930-AP41

規格 : [1 Set]

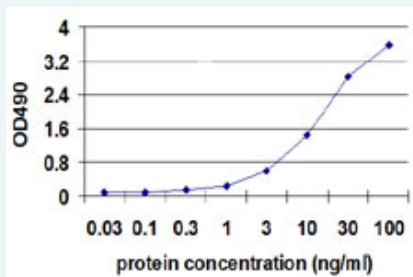
[List All](#)

Specification

Product Description: This antibody pair set comes with matched antibody pair to detect and quantify protein level of human CD19.

Reactivity: Human

Quality Control Testing: Standard curve using recombinant protein (H00000930-Q01) as an analyte.



Sandwich ELISA detection sensitivity ranging from 0.3 ng/ml to 100 ng/ml.

Supplied Product: Antibody pair set content:
 1. Capture antibody: mouse monoclonal anti-CD19, IgG2a Kappa (100 ug)
 2. Detection antibody: biotinylated mouse monoclonal anti-CD19, IgG1 Kappa (50 ug)
 *Reagents are sufficient for at least 3-5 x 96 well plates using recommended protocols.

Storage Instruction: Store reagents of the antibody pair set at -20°C or lower. Please aliquot to avoid repeated freeze thaw cycle. Reagents should be returned to -20°C storage immediately after use.

Applications

ELISA Pair (Recombinant protein)

 [Protocol Download](#)

Gene Information

Entrez GeneID: [930](#)

Gene Name: CD19

Gene Alias: B4,MGC12802

Gene Description: CD19 molecule

Omim ID: [107265](#)

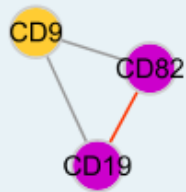
Gene Ontology: [Hyperlink](#)

Gene Summary: Lymphocytes proliferate and differentiate in response to various

concentrations of different antigens. The ability of the B cell to respond in a specific, yet sensitive manner to the various antigens is achieved with the use of low-affinity antigen receptors. This gene encodes a cell surface molecule which assembles with the antigen receptor of B lymphocytes in order to decrease the threshold for antigen receptor-dependent stimulation. [provided by RefSeq]

Other Designations: B-lymphocyte antigen CD19,CD19 antigen

Interactome



Gene Pathway

[B cell receptor signaling pathway](#) [Hematopoietic cell lineage](#) [Primary immunodeficiency](#)

Related Disease

[Arthritis, Rheumatoid](#) [Crohn Disease](#) [Crohn's disease](#) [Genetic Predisposition to Disease](#) [Lupus Erythematosus, Systemic](#) [Pemphigus](#) [Scleroderma, Systemic](#)

[服務條款](#) | [隱私權政策](#) | [著作及商標](#) | [網站地圖](#)

©2016 亞諾法生技股份有限公司 Abnova Corporation. 版權所有.