



SZABO SCANDIC

Part of Europa Biosite

Produktinformation



Forschungsprodukte & Biochemikalien



Zellkultur & Verbrauchsmaterial



Diagnostik & molekulare Diagnostik



Laborgeräte & Service

Weitere Information auf den folgenden Seiten!
See the following pages for more information!



Lieferung & Zahlungsart

siehe unsere [Liefer- und Versandbedingungen](#)

Zuschläge

- Mindermengenzuschlag
- Trockeneiszuschlag
- Gefahrgutzuschlag
- Expressversand

SZABO-SCANDIC HandelsgmbH

Quellenstraße 110, A-1100 Wien

T. +43(0)1 489 3961-0

F. +43(0)1 489 3961-7

mail@szabo-scandic.com

www.szabo-scandic.com

[linkedin.com/company/szaboscandic](https://www.linkedin.com/company/szaboscandic) 

DOK1 (Human) IP-WB Antibody Pair

Catalog # : H00001796-PW2

規格 : [1 Set]

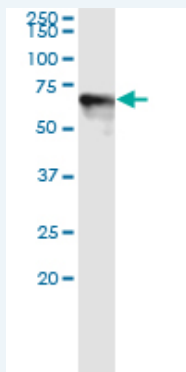
[List All](#)

Specification

Product Description: This IP-WB antibody pair set comes with one antibody for immunoprecipitation and another to detect the precipitated protein in western blot.

Reactivity: Human

Quality Control Testing: Immunoprecipitation-Western Blot (IP-WB)



Immunoprecipitation of DOK1 transfected lysate using rabbit polyclonal anti-DOK1 and Protein A Magnetic Bead (U0007), and immunoblotted with mouse purified polyclonal anti-DOK1.

Supplied Product: Antibody pair set content:
 1. Antibody pair for IP: rabbit polyclonal anti-DOK1 (300 ul)
 2. Antibody pair for WB: mouse purified polyclonal anti-DOK1 (50 ug)

Storage Instruction: Store reagents of the antibody pair set at -20°C or lower. Please aliquot to avoid repeated freeze thaw cycle. Reagents should be returned to -20°C storage immediately after use.

Applications

Immunoprecipitation-Western Blot

 [Protocol Download](#)

Gene Information

Entrez GeneID: [1796](#)

Gene Name: DOK1

Gene Alias: MGC117395, MGC138860, P62DOK

Gene Description: docking protein 1, 62kDa (downstream of tyrosine kinase 1)

Omim ID: [602919](#)

Gene Ontology: [Hyperlink](#)

Gene Summary: Docking protein 1 is constitutively tyrosine phosphorylated in

hematopoietic progenitors isolated from chronic myelogenous leukemia (CML) patients in the chronic phase. It may be a critical substrate for p210(bcr/abl), a chimeric protein whose presence is associated with CML. Docking protein 1 contains a putative pleckstrin homology domain at the amino terminus and ten PXXP SH3 recognition motifs. Docking protein 2 binds p120 (RasGAP) from CML cells. It has been postulated to play a role in mitogenic signaling. [provided by RefSeq]

Other Designations: Downstream of tyrosine kinase 1,docking protein 1,docking protein 1 (downstream of tyrosine kinase 1),docking protein 1, 62kD (downstream of tyrosine kinase 1)

Related Disease

Genetic Predisposition to Disease Leukemia, Lymphocytic, Chronic

[服務條款](#) | [隱私權政策](#) | [著作及商標](#) | [網站地圖](#)

©2016 亞諾法生技股份有限公司 Abnova Corporation. 版權所有.