



SZABO SCANDIC

Part of Europa Biosite

Produktinformation



Forschungsprodukte & Biochemikalien



Zellkultur & Verbrauchsmaterial



Diagnostik & molekulare Diagnostik



Laborgeräte & Service

Weitere Information auf den folgenden Seiten!
See the following pages for more information!



Lieferung & Zahlungsart

siehe unsere [Liefer- und Versandbedingungen](#)

Zuschläge

- Mindermengenzuschlag
- Trockeneiszuschlag
- Gefahrgutzuschlag
- Expressversand

SZABO-SCANDIC HandelsgmbH

Quellenstraße 110, A-1100 Wien

T. +43(0)1 489 3961-0

F. +43(0)1 489 3961-7

mail@szabo-scandic.com

www.szabo-scandic.com

[linkedin.com/company/szaboscandic](https://www.linkedin.com/company/szaboscandic) 

DVL2 (Human) IP-WB Antibody Pair

Catalog # : H00001856-PW1

規格 : [1 Set]

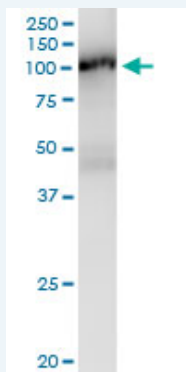
List All

Specification

Product Description: This IP-WB antibody pair set comes with one antibody for immunoprecipitation and another to detect the precipitated protein in western blot.

Reactivity: Human

Quality Control Testing: Immunoprecipitation-Western Blot (IP-WB)



Immunoprecipitation of DVL2 transfected lysate using rabbit polyclonal anti-DVL2 and Protein A Magnetic Bead ([U0007](#)), and immunoblotted with mouse polyclonal anti-DVL2.

Supplied Product: Antibody pair set content:
1. Antibody pair for IP: rabbit polyclonal anti-DVL2 (300 ul)
2. Antibody pair for WB: mouse polyclonal anti-DVL2 (50 ul)

Storage Instruction: Store reagents of the antibody pair set at -20°C or lower. Please aliquot to avoid repeated freeze thaw cycle. Reagents should be returned to -20°C storage immediately after use.

MSDS:  [Download](#)

Applications

Immunoprecipitation-Western Blot

 [Protocol Download](#)

Gene Information

Entrez GeneID: [1856](#)

Gene Name: DVL2

Gene Alias: -

Gene Description: dishevelled, dsh homolog 2 (Drosophila)

Omim ID: [602151](#)

Gene Ontology: [Hyperlink](#)

Application Image

Immunoprecipitation-Western Blot

Gene Summary: This gene encodes a member of the dishevelled (dsh) protein family. The vertebrate dsh proteins have approximately 40% amino acid sequence similarity with Drosophila dsh. This gene encodes a 90-kD protein that undergoes posttranslational phosphorylation to form a 95-kD cytoplasmic protein, which may play a role in the signal transduction pathway mediated by multiple Wnt proteins. The mechanisms of dishevelled function in Wnt signaling are likely to be conserved among metazoans. [provided by RefSeq]

Other Designations: DSH homolog 2,dishevelled 2,dishevelled 2 (homologous to Drosophila dsh),segment polarity protein dishevelled homolog DVL-2

Gene Pathway

[Basal cell carcinoma](#) [Colorectal cancer](#) [Melanogenesis](#) [Notch signaling pathway](#)
[Pathways in cancer](#) [Wnt signaling pathway](#)

Related Disease

[Cardiovascular Diseases](#) [Depressive Disorder, Major](#) [Diabetes Mellitus, Type 2](#) [Edema](#)
[Genetic Predisposition to Disease](#)

[服務條款](#) | [隱私權政策](#) | [著作及商標](#) | [網站地圖](#)

©2016 亞諾法生技股份有限公司 Abnova Corporation. 版權所有.