



SZABO SCANDIC

Part of Europa Biosite

Produktinformation



Forschungsprodukte & Biochemikalien



Zellkultur & Verbrauchsmaterial



Diagnostik & molekulare Diagnostik



Laborgeräte & Service

Weitere Information auf den folgenden Seiten!
See the following pages for more information!



Lieferung & Zahlungsart

siehe unsere [Liefer- und Versandbedingungen](#)

Zuschläge

- Mindermengenzuschlag
- Trockeneiszuschlag
- Gefahrgutzuschlag
- Expressversand

SZABO-SCANDIC HandelsgmbH

Quellenstraße 110, A-1100 Wien

T. +43(0)1 489 3961-0

F. +43(0)1 489 3961-7

mail@szabo-scandic.com

www.szabo-scandic.com

[linkedin.com/company/szaboscandic](https://www.linkedin.com/company/szaboscandic) 

E2F6 (Human) Matched Antibody Pair

Catalog # : H00001876-AP21

規格 : [1 Set]

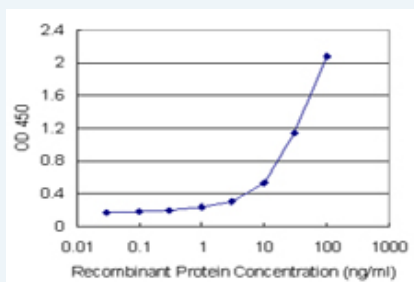
[List All](#)

Specification

Product Description: This antibody pair set comes with matched antibody pair to detect and quantify protein level of human E2F6.

Reactivity: Human

Quality Control Testing: Standard curve using recombinant protein (H00001876-P01) as an analyte.



Sandwich ELISA detection sensitivity ranging from 1 ng/ml to 100 ng/ml.

Supplied Product: Antibody pair set content:
 1. Capture antibody: rabbit MaxPab® affinity purified polyclonal anti-E2F6 (100 ug)
 2. Detection antibody: mouse polyclonal anti-E2F6 (40 ul)
 *Reagents are sufficient for at least 3-5 x 96 well plates using recommended protocols.

Storage Instruction: Store reagents of the antibody pair set at -20°C or lower. Please aliquot to avoid repeated freeze thaw cycle. Reagents should be returned to -20°C storage immediately after use.

MSDS:  [Download](#)

Applications

ELISA Pair (Recombinant protein)

 [Protocol Download](#)

Gene Information

Entrez GeneID: [1876](#)

Gene Name: E2F6

Gene Alias: E2F-6,MGC111545

Gene Description: E2F transcription factor 6

Omim ID: [602944](#)

Gene Ontology: [Hyperlink](#)

Application Image

ELISA Pair (Recombinant protein)

Gene Summary: This gene encodes a member of the E2F transcription factor protein family. E2F family members play a crucial role in control of the cell cycle and of the action of tumor suppressor proteins. They are also a target of the transforming proteins of small DNA tumor viruses. Many E2F proteins contain several evolutionarily conserved domains: a DNA binding domain, a dimerization domain which determines interaction with the differentiation regulated transcription factor proteins (DP), a transactivation domain enriched in acidic amino acids, and a tumor suppressor protein association domain which is embedded within the transactivation domain. The encoded protein of this gene is atypical because it lacks the transactivation and tumor suppressor protein association domains. It contains a modular suppression domain and is an inhibitor of E2F-dependent transcription. The protein is part of a multimeric protein complex that contains a histone methyltransferase and the transcription factors Mga and Max. Multiple transcript variants have been reported for this gene, but it has not been clearly demonstrated that they encode valid isoforms. [provided by RefSeq]

Other E2F transcription factor 6, isoform 1

Designations:

Related Disease

[Genetic Predisposition to Disease Ovarian Neoplasms](#)

[服務條款](#) | [隱私權政策](#) | [著作及商標](#) | [網站地圖](#)

©2016 亞諾法生技股份有限公司 Abnova Corporation. 版權所有.