



SZABO SCANDIC

Part of Europa Biosite

Produktinformation



Forschungsprodukte & Biochemikalien



Zellkultur & Verbrauchsmaterial



Diagnostik & molekulare Diagnostik



Laborgeräte & Service

Weitere Information auf den folgenden Seiten!
See the following pages for more information!



Lieferung & Zahlungsart

siehe unsere [Liefer- und Versandbedingungen](#)

Zuschläge

- Mindermengenzuschlag
- Trockeneiszuschlag
- Gefahrgutzuschlag
- Expressversand

SZABO-SCANDIC HandelsgmbH

Quellenstraße 110, A-1100 Wien

T. +43(0)1 489 3961-0

F. +43(0)1 489 3961-7

mail@szabo-scandic.com

www.szabo-scandic.com

[linkedin.com/company/szaboscandic](https://www.linkedin.com/company/szaboscandic) 

HLA-DQB1 (Human) IP-WB Antibody Pair

Catalog # : H00003119-PW1

規格 : [1 Set]

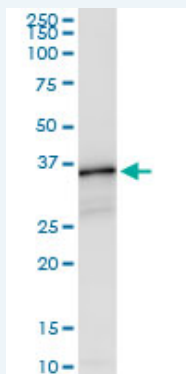
[List All](#)

Specification

Product Description: This IP-WB antibody pair set comes with one antibody for immunoprecipitation and another to detect the precipitated protein in western blot.

Reactivity: Human

Quality Control Testing: Immunoprecipitation-Western Blot (IP-WB)



Immunoprecipitation of HLA-DQB1 transfected lysate using rabbit polyclonal anti-HLA-DQB1 and Protein A Magnetic Bead ([U0007](#)), and immunoblotted with mouse polyclonal anti-HLA-DQB1.

Supplied Product: Antibody pair set content:
1. Antibody pair for IP: rabbit polyclonal anti-HLA-DQB1 (300 ul)
2. Antibody pair for WB: mouse polyclonal anti-HLA-DQB1 (50 ul)

Storage Instruction: Store reagents of the antibody pair set at -20°C or lower. Please aliquot to avoid repeated freeze thaw cycle. Reagents should be returned to -20°C storage immediately after use.

MSDS:  [Download](#)

Applications

Immunoprecipitation-Western Blot

 [Protocol Download](#)

Gene Information

Entrez GeneID: [3119](#)

Gene Name: HLA-DQB1

Gene Alias: CELIAC1,HLA-DQB,IDDM1

Gene Description: major histocompatibility complex, class II, DQ beta 1

Omim ID: [123400](#), [126200](#), [222100](#), [604305](#)

Gene Ontology: [Hyperlink](#)

Application Image

Immunoprecipitation-Western Blot

Gene Summary: HLA-DQB1 belongs to the HLA class II beta chain paralogues. This class II molecule is a heterodimer consisting of an alpha (DQA) and a beta chain (DQB), both anchored in the membrane. It plays a central role in the immune system by presenting peptides derived from extracellular proteins. Class II molecules are expressed in antigen presenting cells (APC: B lymphocytes, dendritic cells, macrophages). The beta chain is approximately 26-28 kDa and it contains 6 exons. Exon one encodes the leader peptide, exons 2 and 3 encode the two extracellular domains, exon 4 encodes the transmembrane domain and exon 5 encodes the cytoplasmic tail. Within the DQ molecule both the alpha chain and the beta chain contain the polymorphisms specifying the peptide binding specificities, resulting in up to 4 different molecules. Typing for these polymorphisms is routinely done for bone marrow transplantation. [provided by RefSeq]

Other Designations: MHC DQ beta, MHC class II DQ beta chain, MHC class II HLA-DQ beta glycoprotein, MHC class II antigen DQB1, MHC class II antigen HLA-DQ-beta-1, MHC class2 antigen, OTTHUMP00000178570, lymphocyte antigen, major histocompatibility complex class II beta

Gene Pathway

[Allograft rejection](#) [Antigen processing and presentation](#) [Asthma](#)
[Autoimmune thyroid disease](#) [Cell adhesion molecules \(CAMs\)](#) [Graft-versus-host disease](#)
[Systemic lupus erythematosus](#) [Type I diabetes mellitus](#)

Related Disease

[Abortion, Habitual](#) [Abortion, Spontaneous](#) [Abruptio Placentae](#)
[Acquired Immunodeficiency Syndrome](#) [Acute Disease](#) [Addison Disease](#) [Adenocarcinoma](#)
[Adenocarcinoma, Follicular](#) [Adrenal Insufficiency](#) [Aggressive Periodontitis](#)
[Agricultural Workers' Diseases](#) [AIDS-Related Opportunistic Infections](#) [Alopecia](#)
[Alopecia Areata](#) [Alveolar Bone Loss](#) [Anemia](#) [Anemia, Aplastic](#) [Anemia, Sickle Cell](#)
[Anemia, sickle cell](#)

... see more