



SZABO SCANDIC

Part of Europa Biosite

Produktinformation



Forschungsprodukte & Biochemikalien



Zellkultur & Verbrauchsmaterial



Diagnostik & molekulare Diagnostik



Laborgeräte & Service

Weitere Information auf den folgenden Seiten!
See the following pages for more information!



Lieferung & Zahlungsart

siehe unsere [Liefer- und Versandbedingungen](#)

Zuschläge

- Mindermengenzuschlag
- Trockeneiszuschlag
- Gefahrgutzuschlag
- Expressversand

SZABO-SCANDIC HandelsgmbH

Quellenstraße 110, A-1100 Wien

T. +43(0)1 489 3961-0

F. +43(0)1 489 3961-7

mail@szabo-scandic.com

www.szabo-scandic.com

[linkedin.com/company/szaboscandic](https://www.linkedin.com/company/szaboscandic) 

HLA-DRB5 (Human) IP-WB Antibody Pair

Catalog # : H00003127-PW1

規格 : [1 Set]

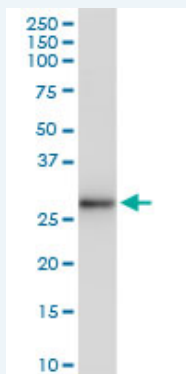
[List All](#)

Specification

Product Description: This IP-WB antibody pair set comes with one antibody for immunoprecipitation and another to detect the precipitated protein in western blot.

Reactivity: Human

Quality Control Testing: Immunoprecipitation-Western Blot (IP-WB)



Immunoprecipitation of HLA-DRB5 transfected lysate using rabbit polyclonal anti-HLA-DRB5 and Protein A Magnetic Bead ([U0007](#)), and immunoblotted with mouse polyclonal anti-HLA-DRB5.

Supplied Product: Antibody pair set content:
 1. Antibody pair for IP: rabbit polyclonal anti-HLA-DRB5 (300 ul)
 2. Antibody pair for WB: mouse polyclonal anti-HLA-DRB5 (50 ul)

Storage Instruction: Store reagents of the antibody pair set at -20°C or lower. Please aliquot to avoid repeated freeze thaw cycle. Reagents should be returned to -20°C storage immediately after use.

MSDS:  [Download](#)

Applications

Immunoprecipitation-Western Blot

 [Protocol Download](#)

Gene Information

Entrez GeneID: [3127](#)

Gene Name: HLA-DRB5

Gene Alias: -

Gene Description: major histocompatibility complex, class II, DR beta 5

Omim ID: [604776](#)

Gene Ontology: [Hyperlink](#)

Application Image

Immunoprecipitation-Western Blot

Gene Summary: HLA-DRB5 belongs to the HLA class II beta chain paralogues. This class II molecule is a heterodimer consisting of an alpha (DRA) and a beta (DRB) chain, both anchored in the membrane. It plays a central role in the immune system by presenting peptides derived from extracellular proteins. Class II molecules are expressed in antigen presenting cells (APC: B lymphocytes, dendritic cells, macrophages). The beta chain is approximately 26-28 kDa and its gene contains 6 exons. Exon one encodes the leader peptide, exons 2 and 3 encode the two extracellular domains, exon 4 encodes the transmembrane domain and exon 5 encodes the cytoplasmic tail. Within the DR molecule the beta chain contains all the polymorphisms specifying the peptide binding specificities. Typing for these polymorphisms is routinely done for bone marrow and kidney transplantation. DRB1 is expressed at a level five times higher than its paralogues DRB3, DRB4 and DRB5. The presence of DRB5 is linked with allelic variants of DRB1, otherwise it is omitted. There are 4 related pseudogenes: DRB2, DRB6, DRB7, DRB8 and DRB9. [provided by RefSeq]

Other Designations: HLA class II histocompatibility antigen, DR-5 beta chain, MHC HLA-DR-beta cell surface glycoprotein, MHC HLA-DR-beta chain, MHC class II HLA beta chain, MHC class II antigen, OTTHUMP00000029035, human leucocyte antigen DRB5, leukocyte antigen class II

Gene Pathway

[Allograft rejection](#) [Antigen processing and presentation](#) [Asthma](#)
[Autoimmune thyroid disease](#) [Cell adhesion molecules \(CAMs\)](#) [Graft-versus-host disease](#)
[Hematopoietic cell lineage](#) [Systemic lupus erythematosus](#) [Type I diabetes mellitus](#)

Related Disease

[Abortion, Habitual](#) [Abruptio Placentae](#) [Alveolar Bone Loss](#) [Aortic Aneurysm](#), [Abdominal Arthritis](#), [Rheumatoid](#) [Bronchiolitis](#) [Celiac Disease](#) [Chronic Disease](#) [Dementia](#)
[Diabetes Mellitus](#) [Diabetes Mellitus, Type 1](#) [Diabetes](#), [Gestational Disease](#) [Susceptibility](#)
[Echinococcosis](#), [Hepatic Encephalomyelitis](#), [Autoimmune](#), [Experimental](#)
[Genetic Predisposition to Disease](#) [Gingival Hemorrhage](#) [Graft vs Host Disease](#)
[Hallucinations](#)

... see more

[服務條款](#) | [隱私權政策](#) | [著作及商標](#) | [網站地圖](#)

©2016 亞諾法生技股份有限公司 Abnova Corporation. 版權所有.