



# SZABO SCANDIC

Part of Europa Biosite

## Produktinformation



Forschungsprodukte & Biochemikalien



Zellkultur & Verbrauchsmaterial



Diagnostik & molekulare Diagnostik



Laborgeräte & Service

Weitere Information auf den folgenden Seiten!  
See the following pages for more information!



### Lieferung & Zahlungsart

siehe unsere [Liefer- und Versandbedingungen](#)

### Zuschläge

- Mindermengenzuschlag
- Trockeneiszuschlag
- Gefahrgutzuschlag
- Expressversand

### SZABO-SCANDIC HandelsgmbH

Quellenstraße 110, A-1100 Wien

T. +43(0)1 489 3961-0

F. +43(0)1 489 3961-7

[mail@szabo-scandic.com](mailto:mail@szabo-scandic.com)

[www.szabo-scandic.com](http://www.szabo-scandic.com)

[linkedin.com/company/szaboscandic](https://www.linkedin.com/company/szaboscandic) 

## HLA-E (Human) IP-WB Antibody Pair

Catalog # : H00003133-PW2

規格 : [ 1 Set ]

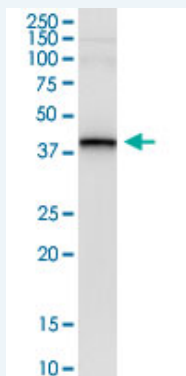
[List All](#)

### Specification

**Product Description:** This IP-WB antibody pair set comes with one antibody for immunoprecipitation and another to detect the precipitated protein in western blot.

**Reactivity:** Human

**Quality Control Testing:** Immunoprecipitation-Western Blot (IP-WB)



Immunoprecipitation of HLA-E transfected lysate using rabbit purified polyclonal anti-HLA-E and Protein A Magnetic Bead (U0007), and immunoblotted with mouse purified polyclonal anti-HLA-E.

**Supplied Product:** Antibody pair set content:  
 1. Antibody pair for IP: rabbit purified polyclonal anti-HLA-E (300 ug)  
 2. Antibody pair for WB: mouse purified polyclonal anti-HLA-E (50 ug)

**Storage Instruction:** Store reagents of the antibody pair set at -20°C or lower. Please aliquot to avoid repeated freeze thaw cycle. Reagents should be returned to -20°C storage immediately after use.

### Applications

Immunoprecipitation-Western Blot

 [Protocol Download](#)

### Gene Information

**Entrez GeneID:** [3133](#)

**Gene Name:** HLA-E

**Gene Alias:** DKFZp686P19218,EA1.2,EA2.1,HLA-6.2,MHC,QA1

**Gene Description:** major histocompatibility complex, class I, E

**Omim ID:** [143010](#)

**Gene Ontology:** [Hyperlink](#)

**Gene Summary:** HLA-E belongs to the HLA class I heavy chain paralogues. This class I

molecule is a heterodimer consisting of a heavy chain and a light chain (beta-2 microglobulin). The heavy chain is anchored in the membrane. HLA-E binds a restricted subset of peptides derived from the leader peptides of other class I molecules. The heavy chain is approximately 45 kDa and its gene contains 8 exons. Exon one encodes the leader peptide, exons 2 and 3 encode the alpha1 and alpha2 domains, which both bind the peptide, exon 4 encodes the alpha3 domain, exon 5 encodes the transmembrane region, and exons 6 and 7 encode the cytoplasmic tail. [provided by RefSeq]

**Other Designations:** HLA class I histocompatibility antigen, E alpha chain, MHC HLA-E alpha-1, MHC HLA-E alpha-2.1, MHC class I antigen, OTTHUMP00000029214, lymphocyte antigen

### Gene Pathway

[Allograft rejection](#) [Antigen processing and presentation](#) [Autoimmune thyroid disease](#)  
[Cell adhesion molecules \(CAMs\)](#) [Endocytosis](#) [Graft-versus-host disease](#)  
[Natural killer cell mediated cytotoxicity](#) [Type I diabetes mellitus](#)

### Related Disease

[Abortion, Habitual](#) [Abortion, Spontaneous](#) [Acute Disease Anemia, Sickle Cell](#)  
[Anemia, sickle cell](#) [Bacterial Infections](#) [Behcet Syndrome](#) [Bone Marrow Diseases](#)  
[Carcinoma](#) [Chorioamnionitis](#) [Coronary Aneurysm](#) [Cytomegalovirus Infections](#)  
[Fetal Membranes, Premature Rupture](#) [Genetic Predisposition to Disease](#)  
[Graft vs Host Disease](#) [HIV Infections](#) [Lupus Erythematosus, Systemic](#)  
[Mucocutaneous Lymph Node Syndrome](#) [Nasopharyngeal Neoplasms](#)

... see more

[服務條款](#) | [隱私權政策](#) | [著作及商標](#) | [網站地圖](#)

©2016 亞諾法生技股份有限公司 Abnova Corporation. 版權所有.